

ULRICH

HEREFORDS

14th ANNUAL BULL & HEIFER SALE

FEBRUARY
25
2020

BALOG AUCTION
LETHBRIDGE, ALBERTA
S A L E 1:00pm MST



ULRICH HEREFORDS

14th ANNUAL BULL & HEIFER SALE

FEBRUARY

25

BALOG AUCTION

LETHBRIDGE, ALBERTA

SALE 1:00pm MST

JOIN US FOR LUNCH: 11:30 am

Welcome to our 14th Annual Bull Sale!

Our 2020 offering on Feb 25th consists of 42 coming two-year-old bulls, 8 long yearlings, and 12 bred heifers. Due to our motto of specializing in light birthweights with great performance plus remarkable cows, we're sure you'll find here just what you need to power your herd into the next decade! Our particular pocket of the province proved to be the 4th year in a row of drought conditions here at Claresholm in 2019. Sourcing feed and managing the sparse grass has become an unwelcome priority and time consuming part of ranch life. Perhaps the plentiful supply of grasshoppers which showed up again last summer should become an alternate source of income, as they are a delicacy in some parts of the world!

While we continue to support Residual Feed Efficiency as part of our decades long dedication to performance testing, we were unable to directly participate in RFI testing for this set of bulls. We did however ultrasound, as the end goal of better quality & quantity of meat remains.

Thank you to Mesabi Ranches, west of Nanton, AB, & recently Elk Ridge, who worked with us to grow this good collection of bulls into their presentation at this year's bull sale. We were pleased with the summer gains, and some of the Dec 7th weights are noted herein. They were fed for growth, and not pushed - so these bulls are ready to work for the long haul. The EPDs referenced throughout this catalogue were published Jan 6th, and therefore may differ to the live CHA website due to the weekly runs.

Thanks in advance to all the buyers and bidders joining us at the sale or online! We genuinely appreciate your support!

Peter Ulrich and Hans & Annette Ulrich



ULRICH HEREFORD RANCH INC.

Box 843, Claresholm, AB T0L 0T0 Email: peter@ulrichherefords.com
Peter Ulrich: (403) 625-1036 Hans & Annette Ulrich

UHRi

SIGHT UNSEEN PURCHASE PLAN:

If you are unable to attend the sale, please contact us or any of the sale staff with instructions to purchase on your behalf.



50 BULLS & 12 BRED HEIFERS ON OFFER!
No creep feed! No hormones or medicated feed!
Backgrounded, not pushed!

BALOG AUCTION SERVICES INC

P.O. BOX 786 LETHBRIDGE, ALBERTA T1J 3Z6
PHONE (403) 320-1980 FAX (403) 320-2660

Welcome Cattlemen!

To the Peter Ulrich 14th Annual Bull Sale

Once again Peter is bringing you his very best!

50 Outstanding - High Calibre Breeding Bulls & 12 Tremendous Bred Heifers!

The Ulrich herd is well known thru the Nation for being leaders in performance testing & herd evaluation.

Peter puts the numbers and the cattle together to give you the kind that will make a difference in your herd.

Great set of cattle - See you at the sale

Respectfully,

R.C. (Bob) Balog

SALE DAY PHONES

BALOG AUCTION (403) 320-1980 PETER'S CELL (403) 625-1036

SALE STAFF

Auctioneer.....Bob Balog.....(403) 320-1980
Louis Balog.....Ring Staff.....(403) 320-1980
Kevin MurninRing Staff.....(406) 853-4638

ACCOMMODATIONS

Comfort Inn 403 320 8874
3226 Fairway Plaza Road S, Lethbridge, AB, T1K 7T5, CA

VIEWING THE BULLS

We welcome you to stop by the ranch any time prior to sale day to view our operation and see the bulls.

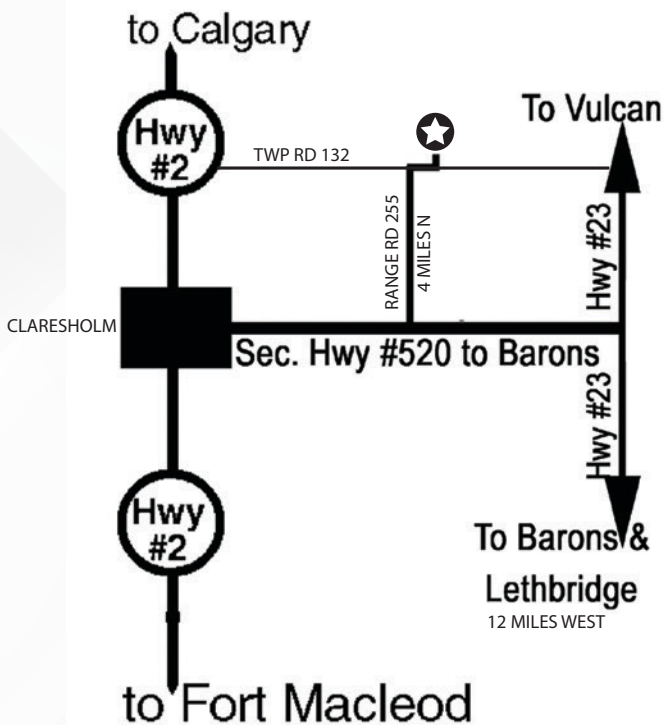
PLEASE JOIN US EARLY SALE DAY!

For presale viewing followed by lunch at 11:30 am

PLEASE NOTE

Pictures of the dams of many of the sale bulls, as well as updated sale information and a downloadable version of this catalogue is available on our website: www.ulrichherefords.com

TO ULRICH RANCH FROM CLARESHOLM:
8 MILES EAST ON SEC HWY #520, 4 MILES NORTH & 1/8 MILE EAST



KEY TO PERFORMANCE TERMS USED HEREIN:

BW: ACTUAL BIRTH WEIGHT IN LBS
205: WEANING WEIGHT IN LBS ADJUSTED TO 205 DAYS
365: YEARLING WEIGHT IN LBS ADJUSTED TO 365 DAYS
RFI: RESIDUAL FEED INTAKE (FEED EFFICIENCY)
PWG: POST WEANING GAIN (DIFFERENCE BETWEEN WN & YR)
LMY: LEAN MEAT YIELD
MPI: Maternal Productivity Index
FMI: Feedlot Merit Index
 For more details on individual EPDs, please see the CHA's website: www.hereford.ca



BREED AVERAGE EPD'S FOR 2018 BORN CALVES	
CE:	2.2
BW:	3.0
WW:	51.3
YW:	82.7
MCE:	1.8
MILK:	23.2
TM:	48.9

Can't make it to the sale? Watch & Bid Online.

With DLMS you can Watch, Listen & Bid on your computer just like you were there with online bidding over the internet

Instructions for Viewing And Bidding At the Sale

Visit www.dlms.ca, Fill out the registration form located under registration and sign-up for your free user account to select a username and password.

BIDDERS - To be approved as a bidder, Log in and click BUYER APPROVAL tab, select the sale you are interested in bidding at and click sign up.

For more information or for help getting approved Call:

Whitney Bosovich 780.991-3025 or Mark Shologan - 780-699-5082

TERMS & CONDITIONS

TERMS - The terms of the sale are cash or cheque payable at Lethbridge, AB, on Sale Day. The right of property shall not pass until settlement is made. All settlements must be made with the clerks of the sale before any cattle will be released. For US export, USDA and individual state rules will apply.

BIDS - Every animal entering the sale ring will be sold to the highest bidder. A floor price will apply to each animal consigned.

DISPUTES - In case of disputes, bidding will be reopened between the parties involved. If no further bid is made, the buyer will be the person from whom the auctioneer accepted the last bid. The auctioneer's decision in such matters will be final.

PURCHASER'S RISK - Each animal becomes the risk of the purchaser as soon as sold.

ANNOUNCEMENTS - Errors discovered in the catalogue will be corrected by announcements from the Auction Stand at sale time and such corrections will take precedence over the printed matter in the catalogue.

CERTIFICATE OF REGISTRY - A certificate of registry duly transferred will be furnished to the buyer for each animal after settlement is made.

SHIPPING - Assistance will be given in making shipment after the sale, but no risk is assumed by Balog Auction, or the seller. Delivery to central points in Alberta will be made at seller's convenience. Out-of-province purchases will be delivered by commercial hauler at shared cost. Any additional expenses are the responsibility of the buyer, including duty, brokerage fees, etc.

BREEDER'S GUARANTEE - The consignors have done everything possible to assure you, the buyer, that every bull in this sale will be a breeder. A certified veterinarian has semen tested and physically evaluated every bull. However, should a problem arise, please inform the seller so further arrangements may be made.

ACCIDENTS - Although every precaution will be taken to protect the safety and comfort of buyers, neither the sales manager, auctioneer nor any owner assumes any responsibility in this matter and disclaims any liability, legal or otherwise, in the event of accident or loss of property.

LIABILITY - Balog Auction is acting as agent only and assumes no responsibility for representations made by the seller. Purchasers must look to the seller for fulfillment of all guarantees and representations made hereunder.

NO BULLS SELL AT CALGARY OR MEDICINE HAT

All of our best are in this sale!

ALL BULLS ARE SEMEN TESTED BEFORE SALE

CREDIT OF \$150 per bull to purchasers who take bulls from the sale

DELIVERY to central points in Alberta at seller's convenience. Out of province purchases delivered by commercial hauler at shared cost.

We strongly recommend that bulls be insured. Insurance agents will be available at the sale.

FLYING IN? If flying into Lethbridge Airport, call Balog Auction for pick up: 1(403)320-1980

ULTRASOUND INFORMATION has been collected on most of these bulls as yearlings and will be available sale day or can be obtained prior to the sale by calling Peter (403) 625-1036. Complete EPD's (beyond those shown in this catalog) are also available.

Direct Livestock Marketing Systems
We're Making the Connection

DLMS
www.dlms.ca

To find an agent or sale near you today
visit www.dlms.ca

Purebred Sales • Daily Presort Sales
Direct Off-farm Sales every Thursdays at 10:00 am

ULRICH HEREFORD RANCH REFERENCE SIRES



A

STANMORE 43K

C01816763 HAJ 43K MARCH 22 1978

BW:	
205:	596
365:	1074
'20 EPDs	
CE:	0.9
BW:	6.8
WW:	36.9
YW:	61.3
MCE:	5
Milk:	2.5
TM:	21

WETMORE BRITISHER 4C
CGD WETMORE 700F
 MISS WETMORE BRITISHER 7C

 SILVER STANDARD 21U
STANDARD LADY 23B
 SILVER LADY 39S

BRITISHER DOMINO AGA 35A
 MISS WETMORE DOMINO 21Z
 BRITISHER DOMINO AGA 35A
 MISS WETMORE DOMINO 33Z
 RUSTICANA STANDARD DOMINO 52N
 MISS SILVER 14M
 REAL SILVER DOMINO 47
 INTENSE LADY 39

Top % of Breed: MCE 15% - Jim Hole was known as one of the all-time premier breeders in Canada, & once said that "43K" was the best bull he ever raised! Some had also claimed he was the best & most complete bull they had ever seen. 43K was smooth, thick, extremely heavy-boned with an outstanding yellow haircoat, & moved as freely as any bull could move. His daughters are feminine & growthy; his sons keep on growing. Like then, these attributes are as important today. It's bulls like 43K that have made the breed what it is today!
 Lots 36F & 53F

B

WINDIMUIR 42X EXACT 160A

C02987707 JGW 160A APRIL 18 2013

BW:	93
205:	740
365:	
'20 EPDs	
CE:	-3.6
BW:	5.9
WW:	52.7
YW:	74.2
MCE:	2.5
Milk:	19.6
TM:	46

SGC 34P RIBSTONE LAD 129S
BRETON WEST 129S EXACT RIB 42X
 LP ADV 93J SANDY 93S

 DBHR 68J EXTRA 149N
WINDIMUIR MAVIS 52S
 WINDIMUIR MAVIS 40N

SGC 9161 RIBSTONE LAD 34P
 WINDIMUIR HELMA 71L
 VTH 32F SANDMAN ADVANCE 93J
 LP SILVER 23K MOSAIC 60M
 CC 122E EXCURSION 68J
 WINDIMUIR 5D MELBA 149J
 WINDIMUIR LEGACY 21K
 MN 92G STD LADY 021J

Westgards (Windimuir) raised this fine bull, and we were fortunate enough to acquire him through their dispersal sale. We were impressed with his Westgard progeny (calves show excellent growth, thickness & volume), his attractive conformation and excellent feet and legs. He comes from a great producing cow family.

Lots 809F, 815F, 819F, 820F, 821F, 823F



C

AGA 18Y ZOOM STANDARD 18Z

C02969377 ALNK 18Z MARCH 13 2012

BW:	93
205:	758
365:	1112
'20 EPDs	
CE:	-1.3
BW:	5.7
WW:	51.3
YW:	74.7
MCE:	-1.8
Milk:	9
TM:	34.7

SILVER STANDARD 55C
AGA 55C STANDARD 18Y
 MISS 46E BRITISHER AGA 22L

 AGA 20J STANMORE 21M
AGA 21M MISS STANMORE 76S
 AGA 101J MISS STANDARD 140P

STANDARD INTENSE 36T
 VERN LADY 4X
 DP BRITISHER AGA 46E
 PINE COULEE MISCHIEF LADY 397
 AGA 121G STANMORE 20J
 AGA 5C MISS ENERLAD 68K
 AGA 656U STANDARD ET 101J
 AGA 22B MISS BRIGADER 511E

Top % of Breed: RFI 14% Zoom 18Z exuded performance, eye-appeal, growth, length, depth & great markings. He exhibits the thickness & capacity of the old, along with the femininity & feet of the new! 94 lb BW, 758 lbs 205-day wt (116 indx), 1112 365-day wt (110 indx), REA 1.09/100 lbs. We're pleased that his numerous progeny have proven his feed efficiency (RFI 104)! Also worthy of mention: BW: 45 sons of 18Z avg'd 87 lbs, 40 dtrs avg'd 85 lbs at birth! Plus his dam 76S's pedigree is backed by great cattle.

Lot 73F

D

AGA 60W BANNER SPORT ZOOM 20Z

C02971704 ALNK 20Z MARCH 13 2012

BW:	95
205:	714
365:	1179
'20 EPDs	
CE:	-3.8
BW:	6.5
WW:	51.9
YW:	77.3
MCE:	-2.6
Milk:	20.2
TM:	46.2

BBSF 6P SPORT 232S
BANNERLANE 232 EXTRA GEN 60W
 BANNERLANE GENSTAR LASS 27R

 AGA 22B BRIGADER 53L
AGA 53L MISS RED DOMINO 1W
 AGA 21M MISS STANMORE 617S

HAWKEYE 75K SKY LAD 6P
 BBSF 18H EXTRA LASS 237M
 C 80G L SARGENT 78K
 BANNERLANE STAN LASS 39M
 CTY BRIGADER 22B
 AGA 189C MISS DOMINO 4E
 AGA 20J STANMORE 21M
 AGA 17M MISS SKY LAD 319P

Top % of Breed: RFI 5% 60W fashioned this thick, solid-marked, deep bodied, heavy-set bull from a moderate-sized mother with strong fleshing ability! No need to wonder about the great performance from this guy - it's obvious! Plus he participated in CHA's feed efficiency trial and landed in the best bunch for gaining most on least feed. The cow was beautiful with mossy hair, and a flare for the important: a great udder, well-placed teats and powerful rich milk...

Lots 1F, 11F, 26F, 34F, 63F, and heifers 32F, 39F

ULRICH HEREFORD RANCH REFERENCE SIRES



E AGA 60W BANNER SPORT ZEAL 28Z

C02971712 ALNK 28Z MARCH 16 2012

BW:	91
205:	717
365:	950
'20 EPDs	
CE:	7.4
BW:	2.4
WW:	36.8
YW:	56
MCE:	2.8
Milk:	18.3
TM:	36.7

BBSF 6P SPORT 232S
BANNERLANE 232 EXTRA GEN 60W
BANNERLANE GENSTAR LASS 27R

CTY EASY 705T
AGA 705 MISS EASYGOING 905W
AGA 114L MISS STAR GENERAL 47S

HAWKEYE 75K SKY LAD 6P
BBSF 18H EXTRA LASS 237M
C 80G L SARGENT 78K
BANNERLANE STAN LASS 39M
AGA 10S STANDARD 137Y
COURTNEY LASS J921
AGA 13G GENERAL 114L
AGA 22B MISS BRIGADER 511E

Top % of Breed: CE 14%

Which is more striking? 28Z's two hooded, goggle eyes, red neck, red testicles & red legs down to red hooves, or his eye-appeal, length, thickness & extra-wide top & sound solid feet!? All of these traits he passes on to his progeny. Check out his 86 lb BW, 109 WN index, REA 1.21/100 lbs, & LMY 66.3! Dam 905W was tremendous with nice even teats on a tight udder. Yes, 28Z has certainly added some Zeal to our herd! Now owned by Jon McKenzie & Jim Wildeman, Warner, AB.

Lots 66F, 69F, and heifers 114F, 712E, 717E



F AGA 2U BRITISHER 13A

C02986647 ALNK 13A MARCH 20 2013

BW:	84
205:	558
365:	1034
'20 EPDs	
CE:	-1
BW:	3.9
WW:	45.7
YW:	66.4
MCE:	-0.3
Milk:	19.2
TM:	42.1

DP BRITISHER AGA 46E
AGA 46E BRITISHER ET 2U
AGA 22B MISS BRIGADER 511E

CC 77J JARROD 26T
AGA 26T MISS JARROD EXCITE 13X
AGA 53L MISS RED DOMINO 80S

DOMINO STANDARD DP LAD 45
BRITISHER WETMORE LADY AGA 5A
CTY BRIGADER 22B
AGA MISS 42X STANMORE 94Z
CC 129D SUPERMAN 77J
CC 14N JOCELYN 33R
AGA 22B BRIGADER 53L
AGA 277D MISS STANDARD 810H

Top % of Breed: SC 6%, MARB 28% RFI 20% • Long & solid marked with a woolly, yellow haircoat with a great top, thick quarters & great pants, this 2U son placed far above average on the RFI EPD report. The ultrasound scan revealed a REA of 1.25/100 lbs. 13A sold to Joe Westover of Nebraska, while we retained semen interest. Joe was really happy with his results in every aspect. We've also found the progeny are high performance cattle, really thick with excellent tops - lots of growth & volume and should raise really excellent females.

Lots 20F & 101F



G AGA 127Y YES SIR BLASTOFF 407B

C03011128 ALNK 407B AUGUST 22 2014

BW:	105
205:	669
365:	1183
'20 EPDs	
CE:	2
BW:	4.7
WW:	58
YW:	88.1
MCE:	4.6
Milk:	18.7
TM:	47.7

BCD 140L DOM LAD 326N
C 326N YES I CAN 127Y
LONE-PINE ICE QUEEN 55T

AGA 22B BRIGADER 97J
AGA 97J MISS RED EXTRA 237M
AGA 3G MISS DON DANDY ET 135K

BP ROBIN HOOD 140L
BP 146D LADY 30L
LRD LIBERTY PRINCE 24M
MHF 9322 ICICLES 16M
CTY BRIGADER 22B
AGA 335C MISS EXTRA 8G
DONORAH 412 DANDY LAD 3G
SNS GENERATOR'S LADY 21A

Top % of Breed: WN 24%, MARB 16%, MCE 19% RFI 20% • 407B blasted outrageous performance (123 WN & 118 YW indexes) & red testicles. His sire, 127Y, has impressed us with quality & conformation, eye-appeal & that excellent woolly haircoat. Braggin' rights also belong to the elite 14-yr-old dam 237M, who proved to be fantastic through the years (9 sons indexed avg 109.8 & 3 daughters indexed avg 114.7 at WN - 8 sons indexed avg 107.9 & 3 daughters indexed avg 108.7 at YR)! Now owned with Robert Simkin of Consort, AB.

Lots 17F, 91F, & 99F



H AGA 15H BRIT CANDIDATE ET 97C

C03029060 ALNK 97C APRIL 17 2015

BW:	82
205:	661
365:	966
'20 EPDs	
CE:	8.8
BW:	0.6
WW:	29.7
YW:	50.8
MCE:	-1.5
Milk:	12.7
TM:	27.6

DP BRITISHER AGA 46E
46E BRITISHER AGA 15H
MISS DP AGA 121E

STANDRD LAD 656 4ET
AGA 656U MISS STANDARD ET 17H
AGA MISS 80S VOLTAGE ET 14X

DOMINO STANDARD DP LAD 45
BRITISHER WETMORE LADY AGA 5A
DOMINO STANDARD DP LAD 45
LADY BRITISHER AGA 29U
HI STANDARD LAD 20P
BELL L 60H DOMINO LASS 82K
LCI ET HIGH VOLTAGE 80S
MISS 51K BRITISHER AGA 61N

Top % of Breed: BW 10% CE 9%, MARB 14%, FMI 27% RFI 14% • 97C is a tremendous ET mating, 15H & our elite donor dam, 17H. She's a powerful "cow & a half" by 656 4ET. (At WN, her 14 sons avg indx:103.6, 8 daughters 109) Like his sire, 97C is very sound, structured & muscled well, long bodied, with red neck & red testicles. Pigment is passed on to progeny & Calving Ease exudes: 21 sons avg'd 73 lbs - 10 dghtrs avg'd 64 lbs BW. EPDs are butchered by old pedigree, but he's a heifer bull & female maker for today. Owned by Justin Wichman of Moore, MT USA.

Lots 76F, 92F, 139F

ULRICH HEREFORD RANCH REFERENCE SIRES



I AGA 137A MO LE BRIT CHUCK 110C

C03026417 ALNK 110C APRIL 23 2015

BW:	89
205:	665
365:	1031
'20 EPDs	
CE:	6.8
BW:	1.2
WW:	33
YW:	72.2
MCE:	3.9
Milk:	23.6
TM:	40.1

AGA 47F DOMINO ET 2Y
AGA 2Y MO LE DOMINO 137A
 AGA 2U MISS BRITISHER 123Y

AGA 705 EASYGOING EXPRESS 67X
AGA 67X MISS ALTO EXPRESS 78A
 AGA 114L MISS GENERAL 104W

MR MO LE 47F
 AGA 22B MISS BRIGADER 511E
 AGA 46E BRITISHER ET 2U
 AGA 21M MISS STANMORE 100R
 CTY EASY 705T
 AGA 21M MISS STANMORE 22T
 AGA 13G GENERAL 114L
 AGA 41F MISS HI STANDARD 90P

Top % of Breed: BW 16%, CE 17%, MARB 13%, MCE 25%, FMI 6%, PWG 12% • Eye-catching, moderate-framed & powerful, this son of 137A is deep-bodied, full of muscle through quarters into the pants. He's well-marked, with well-shaped red testicles, red neck & throws many red eyes (some goggle). Progeny (mostly from 1st calf heifers) were born unassisted (m avg 78 lbs, f avg 72 lbs BW) then grew, thickening thru YR & beyond! Dam 78A's 2 sons avg'd 83 lbs BW, 105.5 WN 103.5 YR indexes & 2 dghtrs avg'd 85 lbs BW, 111 WN & (1) 115 YR indexes!

Lots 14F, 49F, 136F, 149F, 816F and heifer 54F

J AGA 87W HAMMER DRAFTSMAN 16D

C03028959 U 16D MARCH 26 2016

BW:	92
205:	744
365:	1200
'20 EPDs	
CE:	3.2
BW:	3
WW:	42.1
YW:	63.8
MCE:	-1.1
Milk:	21.4
TM:	42.5

LFF 5L JACK HAMMER 26R
AGA 26R WHAM HAMMER 87W
 AGA 44K MISS OLD DOMINO 252M

GCC PETE 203Y ET
AGA 203Y MISS GREGORY PETE 67A
 AGA 114L MISS GENERAL 19Y

DIAMOND-T 25J LAD 5L
 LFF 3B HI LITE EXTRA LASS 11E
 AGA 1S OLD DOMINO 44K
 AGA 102E MISS EXTRA 190K
 UPS DOMINO 3027
 LPG STANDARD 44B LASS 50H
 AGA 13G GENERAL 114L
 AGA 118L MISS STANDARD 2R

Top % of Breed: SC 10% RFI 14%

This Draftsman is a really attractive high performance heifer bull with depth of rib, thickness and pants. He was sired by our impressive voluminous 87W, plus - his dam, 67A, is an incredible Pete 203Y daughter. She's got lots of volume, easy doing ability, awesome feet and a splendid flat udder with perfect position. 16D's first daughters are looking great, and we're excited to see them calve out this spring.

Lots 25F, 102F, 117F, 120F, 146F, 152F and heifer 103F



K AGA 18Z ZOOM STAN DRUMROLL 60D

C03028994 U 60D APRIL 08 2016

BW:	105
205:	792
365:	1235
'20 EPDs	
CE:	3.9
BW:	5.4
WW:	55.2
YW:	82.6
MCE:	4
Milk:	14.6
TM:	42.2

AGA 55C STANDARD 18Y
AGA 18Y ZOOM STANDARD 18Z
 AGA 21M MISS STANMORE 76S

LCI 68R RED STANDARD 109U
AGA 109U MISS RIB STAN 117Z
 AGA 21M MISS STANMORE 126T

SILVER STANDARD 55C
 MISS 46E BRITISHER AGA 22L
 AGA 20J STANMORE 21M
 AGA 101J MISS STANDARD 140P
 JNHR RED STANDARD 68R
 LCI KD CRYSTAL 7N
 AGA 20J STANMORE 21M
 AGA 656U MISS STANDARD 135J

Top % of Breed SC 16%, MCE 24%• Drumroll... Highest performing bull of "D" bunch, (113 WN indx, 107 YR indx), this powerful 18Z son with a woolly medium-coloured haircoat has excellent scrotal shape & size, with very hooded eyes & pigment. He's thick, long & quiet with tremendous maternal strength (excellent udder placement & good feet from generations behind dam 117Z, daughter of a Doenz bull. Her 3 heifers avg'd 105 WN indx). 60D ran as a yearling with 30 young cows & didn't miss a beat - kept his flesh just like the other bulls.

Lots 13F, 72F, 80F, 81F, 84F, and heifers 45F, 78F

ALL STAR BREEDER



We at Ulrich Herefords are pleased to have been awarded the status of Five-Star Breeder, the highest possible, and 1 of only 44 operations across Canada to do so! This simply means that we have completely & accurately reported 5 traits: Calving Ease, Birthweights, Weaning Weights, Yearling Weights and Ultrasound on our entire calf crop.



RFI - WHAT IS IT AND WHY SHOULD I CARE?

Residual Feed Intake is a measure of feed efficiency. One point in the scale represents 10 pounds of feed per year. A larger number on the scale indicates the animal is more efficient. It is important to balance this trait with gain, so the PWG EPD (Post Weaning Gain) identifies the difference between the WW & YW EPDs to keep growth in the analysis. Research has shown that identifying efficient animals translates into a huge savings for the cow/calf industry.

ULRICH HEREFORD RANCH COMING 2's



1

BW:	83
205:	582
'20 EPDs	
CE:	2.8
BW:	3.9
WW:	45.4
YW:	71.9
MCE:	0.3
Milk:	24.4
TM:	47.1

AGA 20Z SPORT FACTOR 1F

C03052095 U 1F MARCH 18 2018

BANNERLANE 232 EXTRA GEN 60W
AGA 60W BANNER SPORT ZOOM 20Z
 AGA 53L MISS RED DOMINO 1W

GCC PETE 203Y ET
AGA 203Y MISS GREGORY PETE 75C
 AGA 20S MISS OAK 19U

BBSF 6P SPORT 232S
 BANNERLANE GENSTAR LASS 27R
 AGA 22B BRIGADER 53L
 AGA 21M MISS STANMORE 617S

UPS DOMINO 3027
 LPG STANDARD 44B LASS 50H
 S BIG OAK 20S ET
 AGA 656U MISS STANDARD 45K

Stout, wide-topped, well-marked, red testicles, one goggle eye
 •Sired by home-raised 20Z who was sold in production to purebred breeders Benwyn Farm in Dawson Creek, BC • performed well (WN 106 index and YR 104 index) • ultrasound - excellent REA 114 index, 1.10/100 lbs, and high Yield 65.5 • easy-keeping (Dec 7, 2019 weight -1721 lbs) • splendid deep young dam from great cow family, great feet & udder and doing ability (656U & UPS DOMINO 3027) - 2 sons avg'd 81 lb BW, 108 WN indxs, 1 heifer 68 lbs BW, & managed 100 WN index.

Dam pictured on inside back cover

5



BW:	64
205:	591
'20 EPDs	
CE:	11.7
BW:	-0.8
WW:	31.1
YW:	49.2
MCE:	3.9
Milk:	23.3
TM:	38.9

AGA 2Y MO LE DOMINO FRANK 5F

C03052099 U 5F MARCH 18 2018

MR MO LE 47F
AGA 47F DOMINO ET 2Y
 AGA 22B MISS BRIGADER 511E

GCC PETE 203Y ET
AGA 203Y MISS GREGORY PETE 28D
 AGA 705 MS EASYGOING BIRDY 62B

DOUBLE MO LE 12B
 D STANDARD LASS 88B
 CTY BRIGADER 22B
 AGA MISS 42X STANMORE 94Z

UPS DOMINO 3027
 LPG STANDARD 44B LASS 50H
 CTY EASY 705T
 AGA 21M MISS STANMORE 19R

Top % of Breed: BW 3%, CE 3%, MARB 8%, MCE 25%
 •**HEIFER BULL** (64 lb BW) vigour & zeal provided by sire 2Y's line - light BW & generous builds • performance! (WN 108 indx, YR 104 indx) • 1 red eye, red testicles & neck, pants galore, stout easy-keeping • moderate dam 28D from a great family, top (203Y & 3027) & bottom (21M & 656): 2 calves avg'd 79 lb BW & 110.5 WN indx • MPI 141.4 (breed avg 122.3), FMI 142.7 (breed avg 111.8), MCE 3.9 & MARB +.25 (breed avg +.08)
 •REA 1.10/100 lbs, MARB 128 & RibFat 173 indexes

8



BW:	92
205:	674
'20 EPDs	
CE:	6.5
BW:	2.2
WW:	45.1
YW:	69.7
MCE:	5.7
Milk:	17.9
TM:	40.5

AGA 48Y SUPER FROSTY ET 8F

?Y55324 U 8F MARCH 20 2018

CC 129D SUPERMAN 77J
AGA 77J SUPERMAN 48Y
 AGA 21M MISS STANMORE 88S

DP BRITISHER AGA 46E
AGA 46E MISS BRITISHER 40T
 AGA 124J MISS STANDARD ET 32R

FE 07Y SUPER 129D
 CC 42W JULIANA 66Z
 AGA 20J STANMORE 21M
 AGA 656U MISS STANDARD ET 75P

DOMINO STANDARD DP LAD 45
 BRITISHER WETMORE LADY AGA 5A
 AGA 656U STANDARD ET 124J
 AGA 22B MISS BRIGADER 511E

Top % of Breed: CE 19%, SC 16%, MARB 7%, MCE 10%, RFI 11%
 •long, correct, great performance, son of 48Y who was sold to Douglas Lake, where he toughed it out in the bush, trees, & wildlife producing countless cows for them - bought him back to UHR for his performance & conformation • in drought conditions 8F was highgaining WN ADG 2.84 and WPD 3.38 lbs • nice head & shoulders, lots of length - see MCE 5.7, MARB +.27 (Breed avg +.08) & Yield 65.8% • donor dam 40T is a great cow: deep, wide, roomy, excellent haircoat, just superb

Dam pictured on back cover

11



BW:	72
205:	525
'20 EPDs	
CE:	5.9
BW:	1
WW:	36.8
YW:	52.7
MCE:	1.4
Milk:	26.1
TM:	44.5

AGA 20Z SPORT 11F

C03052391 U 11F MARCH 22 2018

BANNERLANE 232 EXTRA GEN 60W
AGA 60W BANNER SPORT ZOOM 20Z
 AGA 53L MISS RED DOMINO 1W

GCC PETE 203Y ET
AGA 203Y MISS GREGORY PETE 5B
 AGA 2U MISS YANCEY BRIT 172Y

BBSF 6P SPORT 232S
 BANNERLANE GENSTAR LASS 27R
 AGA 22B BRIGADER 53L
 AGA 21M MISS STANMORE 617S

UPS DOMINO 3027
 LPG STANDARD 44B LASS 50H
 AGA 46E BRITISHER ET 2U
 AGA 114L MISS STAR GENERAL 47S

Top % of Breed: BW 13%, CE 22% RFI 20%
 •BW 72lbs - **HEIFER BULL** (see above average Calving Ease & Birthweight EPDs)
 •really stout and mossy haircoat
 •lotsa red: red neck, red testicles, red eyes, red to the toes
 •sire 20Z's 11 calves all performed well at both weaning and yearling
 •moderate roomy mother 5B - great yellow coat of hair, well-marked, easy-keeper

ULRICH HEREFORD RANCH COMING 2's

13



AGA 60D STAN DRUM FOGGY 13F

C03052393 U 13F MARCH 22 2018

BW:	95
205:	629
'20 EPDs	
CE:	-1.4
BW:	5.6
WW:	53.9
YW:	75.1
MCE:	3.5
Milk:	17.6
TM:	44.6

AGA 18Y ZOOM STANDARD 18Z
AGA 18Z ZOOM STAN DRUMROLL 60D
 AGA 109U MISS RIB STAN 117Z

CC 129D SUPERMAN 77J
AGA 77J MISS SUPERMAN 17W
 AGA 22B MISS BRIGADER ET 11L

AGA 55C STANDARD 18Y
 AGA 21M MISS STANMORE 76S
 LCI 68R RED STANDARD 109U
 AGA 21M MISS STANMORE 126T

FE 07Y SUPER 129D
 CC 42W JULIANA 66Z
 CTY BRIGADER 22B
 AGA MISS 80S VOLTAGE ET 14X

Top % of Breed: MCE 30%

• great performance: WW 114 & YW 107 indexes - just like his high performance sire (U 60D)

• Dam 17W - great pedigree - great maternal strength

Weaning	Adj	Index	Count
Male	679	109.0	4
Female	587	103.3	3

• Ultrasound: Ribeye index 105 - Lean Meat Yield 65.4% - lots of beef

14



AGA 110C MO LE CHUCK 14F

C03052394 U 14F MARCH 22 2018

BW:	71
205:	545
'20 EPDs	
CE:	7.4
BW:	1.4
WW:	37.5
YW:	68.1
MCE:	4.6
Milk:	20.8
TM:	39.6

AGA 2Y MO LE DOMINO 137A
AGA 137A MO LE BRIT CHUCK 110C
 AGA 67X MISS ALTO EXPRESS 78A

96 ANDY 72S
AGA 72S MS BERT ANDY DUVET 20D
 AGA 21M MISS STANMORE 19R

Top % of Breed: BW 18%, CE 14%, MARB 11%, MCE 19%, FMI 13%
 • **OUTSTANDING HEIFER BULL** - great light birthweight sire - easy calving (71lb BW) (see CE, BW & MCE EPDs) • two red eyes & red testicles • dam - great maternal strength - great marbling (1 son weighed 71 lbs - 1 daughter 57 lbs - born with vigour & spunk) • sire 110C's 7 bull calves in 2018 avg'd WN 103 index and YR 106 index • 4th top Marbling index 129 (+.22 Marb EPD (breed avg EPDs are +.08)) • Feedlot Merit Index 139.4 (breed avg EPD is 111.8)

AGA 47F DOMINO ET 2Y
 AGA 2U MISS BRITISHER 123Y
 AGA 705 EASYGOING EXPRESS 67X
 AGA 114L MISS GENERAL 104W

96 ANDY 7L
 96 EVE 18N
 AGA 20J STANMORE 21M
 AGA 53L MISS RED DOMINO 218N

17



AGA 407B BLASTOFF FRANKLIN 17F

C03052405 U 17F MARCH 24 2018

BW:	71
205:	529
'20 EPDs	
CE:	7.1
BW:	1.2
WW:	42.7
YW:	72.1
MCE:	5.1
Milk:	23.2
TM:	44.6

C 326N YES I CAN 127Y
AGA 127Y YES SIR BLASTOFF 407B
 AGA 97J MISS RED EXTRA 237M

GCC PETE 203Y ET
AGA 203Y MISS GREGORY PETE 25C
 AGA 21M MISS STANMORE 100R

Top % of Breed: BW 16%, CE 16%, MARB 8%, MCE 15%, FMI 20%
 • BW 71lbs - light birthweight • see CE EPD, MCE, BW EPDs - **RECOMMENDED FOR HEIFERS** • 50% & 100% eye pigment, red testicles, red neck, stylish attractive fellow, great pedigree • great dam (25C) now working in Justin Wichman's herd (Montana) • FMI EPD 132 (breed avg 111.8) MARB .26 (breed avg .08) • Excellent ultrasound scores: REA 108 index (1.07/100 lbs), MARB 133 index (top tested) & yielded well (LMY 64.4) - the carcass traits that count!

BCD 140L DOM LAD 326N
 LONE-PINE ICE QUEEN 55T
 AGA 22B BRIGADER 97J
 AGA 3G MISS DON DANDY ET 135K

UPS DOMINO 3027
 LPG STANDARD 44B LASS 50H
 AGA 20J STANMORE 21M
 AGA 13G MISS GENERAL 249N

18



AGA 2Y MO LE DOMINO FLASH 18F

C03052406 U 18F MARCH 24 2018

BW:	79
205:	560
'20 EPDs	
CE:	9
BW:	2.5
WW:	38.7
YW:	60.7
MCE:	2.6
Milk:	15.5
TM:	34.9

MR MO LE 47F
AGA 47F DOMINO ET 2Y
 AGA 22B MISS BRIGADER 511E

AGA 18Y ZOOM STANDARD 18Z
AGA 18Z MS ZOOM STAN CAKE 505C
 AGA 118L MISS STANDARD 2R

Top % of Breed: CE 9%

• 79 lb BW - light birthweight with WN & YR above average (102 & 105 indexes)

HEIFER BULL

• sire, 2Y, a great light birthweight bull with a great haircoat and strong maternal background with great udders (small teats placed well)

• dam 505C's background is hard to beat too!

DOUBLE MO LE 12B
 D STANDARD LASS 88B
 CTY BRIGADER 22B
 AGA MISS 42X STANMORE 94Z

AGA 55C STANDARD 18Y
 AGA 21M MISS STANMORE 76S
 AGA 85J STANDARD 118L
 AGA 97J MISS RED EXTRA 203N

ULRICH HEREFORD RANCH COMING 2's



20

AGA 13A BRITISHER FUSION 20F

?Y55325 U 20F MARCH 25 2018

BW:	73
205:	596
'20 EPDs	
CE:	8.4
BW:	2.1
WW:	40.3
YW:	57.9
MCE:	3.6
Milk:	21
TM:	41.2

AGA 46E BRITISHER ET 2U
AGA 2U BRITISHER 13A
AGA 26T MISS JARROD EXCITE 13X

DP BRITISHER AGA 46E
AGA 22B MISS BRIGADER 511E
CC 77J JARROD 26T
AGA 53L MISS RED DOMINO 80S

AGA 13G GENERAL 114L
AGA 114L MISS GENERAL 19Y
AGA 118L MISS STANDARD 2R

GEM GENERAL 13G
AGA 656U MISS STANDARD ET 17H
AGA 85J STANDARD 118L
AGA 97J MISS RED EXTRA 203N

- Top % of Breed: BW 30%, CE 10%, SC 24%, MARB 17%, MCE 29%
- 73 lb BW (**HEIFER BULL**) yet weaned at 108 index - gained well on the cow & see sire 13A's footnotes (great growth) • both eyes red, red testicles • dam's +9.5 CE EPD proven: 4 sons avg'd 84 lb BW & 3 dghts avg'd 72 lb BW - her 1st calf (67A) is dam of our 16D herd sire • 1/2 maternal brother, 49E, is working as a light BW sire in our herd • ultrasounded well (REA 103 index, MARB 120 index (EPD +.18 (breed avg .08))
- **HERD BULL PROSPECT • RETAINING SEMEN INTEREST**

Dam pictured on back cover



25

AGA 16D FIRST DRAFT 25F

C03052608 U 25F MARCH 28 2018

BW:	77
205:	
'20 EPDs	
CE:	3.1
BW:	3.6
WW:	45.2
YW:	68
MCE:	-1.3
Milk:	18.7
TM:	41.3

AGA 26R WHAM HAMMER 87W
AGA 87W HAMMER DRAFTSMAN 16D
AGA 203Y MISS GREGORY PETE 67A

LFF 5L JACK HAMMER 26R
AGA 44K MISS OLD DOMINO 252M
GCC PETE 203Y ET
AGA 114L MISS GENERAL 19Y

AGA 18Y ZOOM STANDARD 18Z
AGA 18Z MS ZOOM STAN CHIA 105C
AGA 60W MISS BANNER SPORT 14Z

AGA 55C STANDARD 18Y
AGA 21M MISS STANMORE 76S
BANNERLANE 232 EXTRA GEN 60W
AGA 114L MISS GENERAL 20X

- hard to beat 77lb BW - along with his stretch and conformation
- 30% & 70% eye pigmentation and red testicles
- born to a beautiful cow line - see dam 105C pedigree
- 125 MARB equivalent index, REA 1.00/100 lbs



26

AGA 20Z FRIDAY SPORT 26F

C03052609 U 26F MARCH 28 2018

BW:	91
205:	608
'20 EPDs	
CE:	-4.4
BW:	6.9
WW:	58
YW:	89.5
MCE:	-3
Milk:	19.9
TM:	48.9

BANNERLANE 232 EXTRA GEN 60W
AGA 60W BANNER SPORT ZOOM 20Z
AGA 53L MISS RED DOMINO 1W

BBSF 6P SPORT 232S
BANNERLANE GENSTAR LASS 27R
AGA 22B BRIGADER 53L
AGA 21M MISS STANMORE 617S

96 ANDY 72S
AGA 72S MISS BERT ANDY BUN 18B
AGA 70N MISS BRIT DOM 62S

96 ANDY 7L
96 EVE 18N
AGA 79H BRIT DOM ET 70N
AGA 44C MISS SILVER 61G

- Top % of Breed: WN 24%
- 100% pigment on both eyes, red testicles - marked well - sound feet
- great performance (111 WN and 114 YR indexes) like his sire (Dec 7th, 2019 weight 1793 lbs)
- sire, 20Z, has lots of substance, thick & powerful
- great maternal generations - great udders & feet with lots of volume
- ultrasound REA 108 index
- **HERD BULL PROSPECT** *Dam pictured on back cover*



34

AGA 20Z SPORT FOOTBALL 34F

C03052902 U 34F MARCH 30 2018

BW:	81
205:	638
'20 EPDs	
CE:	3.6
BW:	2.9
WW:	47.3
YW:	70.6
MCE:	1.9
Milk:	25.5
TM:	49.2

BANNERLANE 232 EXTRA GEN 60W
AGA 60W BANNER SPORT ZOOM 20Z
AGA 53L MISS RED DOMINO 1W

BBSF 6P SPORT 232S
BANNERLANE GENSTAR LASS 27R
AGA 22B BRIGADER 53L
AGA 21M MISS STANMORE 617S

GCC PETE 203Y ET
AGA 203Y MISS GREGORY PETE 93B
AGA 174S MISS ROYAL AMIGO 59Y

UPS DOMINO 3027
LPG STANDARD 44B LASS 50H
SGC 76P ROYAL AMIGO 174S
AGA 124J MISS STANDARD 9L

- BW 81 lbs - son of 20Z - **HEIFER BULL**
- lots of substance, wide top, good quarters, both eyes goggled, red testicles, and red neck!
- dam has light calves (compliments of her sire Pete 203Y)
- excellent performance • 116 WN index and good at Yearling
- ultrasound • 113 REA index (1.07/100 lbs) = lots of Ribeye

ULRICH HEREFORD RANCH COMING 2's



36

AGA 43K STANMORE FUEL 36F

C03056751 U 36F MARCH 30 2018

BW:	74
205:	520
'20 EPDs	
CE:	11
BW:	3.4
WW:	33.6
YW:	57
MCE:	7.1
Milk:	11.5
TM:	28.3

CGD WETMORE 700F
STANMORE 43K
STANDARD LADY 23B

WETMORE BRITISHER 4C
MISS WETMORE BRITISHER 7C
SILVER STANDARD 21U
SILVER LADY 39S

CTY EASY 705T
AGA 705 MISS EASYGOING 129X
AGA 21M MISS STANMORE 151P

AGA 10S STANDARD 137Y
COURTNEY LASS J921
AGA 20J STANMORE 21M
AGA 97J MISS RED EXTRA 145M

Top % of Breed: CE 4%, MARB 14%, MCE 5%, FMI 17%

▪ son of old but proven 43K (Jim Hole bull) ▪ plenty of pigment, thick & meaty, just like his sire... ▪ 129X, the dam, has produced herd bull qualities in the past - her red eyes, excellent conformation & udder (both hard to fault) pass on to her sons like this goggle-eyed 36F, with his red neck, red testicles & light 74 lb BW (compliments of her too (her 7 sons avg BW was 81 lbs)) ▪ CE +11.0, MCE +7.1, Feedlot Merit Index +135.5 (breed avg 111.8) MARB +.20 (breed avg 0.08)

Dam pictured on back cover

37

AGA 86D DYNAMO FONDUE 37F

C03052903 U 37F MARCH 30 2018

BW:	84
205:	567
'20 EPDs	
CE:	2.2
BW:	4.7
WW:	52.7
YW:	81.2
MCE:	2.9
Milk:	21.2
TM:	47.6

GCC PETE 203Y ET
AGA 203Y PETE'S DYNAMO 86D
AGA 94Y MS BLUESTAR RISING 55B

UPS DOMINO 3027
LPG STANDARD 44B LASS 50H
YV 915W MR RISING STAR 94Y
AGA 77J MISS XENON STAR 11X

96 ANDY 72S
AGA 72S MS BERT ANDY DOILY 2D
AGA 114L MISS GENERAL 89U

96 ANDY 7L
96 EVE 18N
AGA 13G GENERAL 114L
AGA 53A MISS STANDARD ET 6R

▪ **HEIFER BULL** - 84 lb birthweight - one red eye - red testicles - above average performance ▪ sire, 86D, has good generations of pedigree behind him: (good bloodlines & balanced EPDs) top - proven sire, Pete 203Y who has a great pedigree with light birthweight specialties and good REA & MARB EPDs; bottom: maternal pedigree goes back to Superman 77J & Standrd Lad 656 4ET ▪ dam's pedigree includes our old favourite 114L ▪ maternal granddam 89U is mother of 2nd-highest 2019 seller (now working at Brauns' in Simmie SK)

43

AGA 76D DEEP FIDDLER 43F

C03052908 U 43F APRIL 01 2018

BW:	81
205:	565
'20 EPDs	
CE:	9.8
BW:	3.2
WW:	45.3
YW:	78.4
MCE:	3.7
Milk:	21.7
TM:	44.4

GCC PETE 203Y ET
AGA 203Y GREGORY PETE DEEP 76D
AGA 24W MS GEN WILEY BONNY 99B

UPS DOMINO 3027
LPG STANDARD 44B LASS 50H
AGA 114L GENERAL WILEY 24W
AGA 47R MISS BRITISHER 1T

AGA 18Y ZOOM STANDARD 18Z
AGA 18Z MS ZOOM STAN DOLLY 93D
AGA 4R MISS STANDARD 26T

AGA 55C STANDARD 18Y
AGA 21M MISS STANMORE 76S
AGA 53A STANDARD ET 4R
AGA 124J MISS STANDARD 9L

Top % of Breed: CE 7%, MCE 28%, FMI 14%

▪ 81 lbs BW (+9.8 CE EPD) - light birthweight **HEIFER BULL** from sire 76D plus dam 93D is high in CE & low in BW EPDs
▪ two goggle eyes, red testicles, red neck
▪ good solid performance (both WN & YR) - note FMI EPD of 138.8 (breed avg is 111.8)
▪ shines in MARB (123 index) in ultrasound (+.12 MARB EPD (breed avg is 0.08))

49

AGA 110C MO LE CHUCK FENCE 49F

C03053042 U 49F APRIL 02 2018

BW:	105
205:	593
'20 EPDs	
CE:	-5.7
BW:	6.7
WW:	50.4
YW:	86.8
MCE:	0.8
Milk:	22.1
TM:	47.3

AGA 2Y MO LE DOMINO 137A
AGA 137A MO LE BRIT CHUCK 110C
AGA 67X MISS ALTO EXPRESS 78A

AGA 47F DOMINO ET 2Y
AGA 2U MISS BRITISHER 123Y
AGA 705 EASYGOING EXPRESS 67X
AGA 114L MISS GENERAL 104W

CC 129D SUPERMAN 77J
AGA 77J MISS YELLO SUPERMAN 5Y
AGA 101J MISS STANDARD 140P

FE 07Y SUPER 129D
CC 42W JULIANA 66Z
AGA 656U STANDARD ET 101J
AGA 22B MISS BRIGADER 511E

Top % of Breed: PWG 24% (Post Weaning Gain)

▪ high performance bull, sired by the easy-keeping 110C
▪ he really came good this summer, weighing 1766 lbs on Dec 7th, 2019
▪ really good on REA (113 index) 1.04/100 lbs and Lean Meat Yield 65.0 - lots of meat
▪ lots of length, great pedigree
▪ 5Y mother is leaving many calves that are doing a good job i.e. like her 31D son sold to Webbalta Ranches of Veteran, AB and 36E son sold to Jim Lamb of Claresholm, AB

Dam pictured on inside back cover



ULRICH HEREFORD RANCH COMING 2's



50

AGA 2Y MO LE DOMINO FISH 50F

C03053043 U 50F APRIL 02 2018

BW:	76
205:	553
'20 EPDs	
CE:	8
BW:	1.8
WW:	30.5
YW:	44
MCE:	3.7
Milk:	22
TM:	37.3

MR MO LE 47F
AGA 47F DOMINO ET 2Y
AGA 22B MISS BRIGADER 511E

AGA 114L GENERAL WILEY 24W
AGA 24W MS GEN WILEY DAISY 27D
AGA 203Y MISS GREGORY PETE 17B

Top % of Breed: BW 24%, CE 12%, MARB 17%, MCE 28%

- **HEIFER BULL** - his light birthweight is a contribution from both sides of the pedigree
- weighing 76 lbs at birth yet above average at weaning
- good in MARB (105 index) at ultrasound (+.18 MARB EPD (breed avg +0.08)) ▪ EPDs very good in CE & BW
- parents will pass their conformation, soundness, great udder, and light birthweight genes on through 50F to produce some great cattle for his new owner

DOUBLE MO LE 12B
D STANDARD LASS 88B
CTY BRIGADER 22B
AGA MISS 42X STANMORE 94Z

AGA 13G GENERAL 114L
AGA 118L MISS STANDARD 2R
GCC PETE 203Y ET
AGA 26T MISS JARROD 85X



53

AGA 43K STANMORE FAMOUS 53F

C03056753 U 53F APRIL 03 2018

BW:	97
205:	577
'20 EPDs	
CE:	-0.3
BW:	5.7
WW:	41.2
YW:	62.8
MCE:	2.2
Milk:	14
TM:	34.6

CGD WETMORE 700F
STANMORE 43K
STANDARD LADY 23B

BANNERLANE 232 EXTRA GEN 60W
AGA 60W MISS BANNER SPORT 118A
AGA 705 MISS EASYGOING 905W

- performed well - really meaty, straight-topped, sired by STANMORE 43K (old Jim Hole bull) ▪ nearly full eye pigmentation and red testicles ▪ ultrasound: excellent in Fat for easy-keeping, easy-doing bulls... MARB was 114 index and REA: 1.00/100 lbs (There's lots of meat in that old bloodline, good meat too, with loads of marbling!)
- used a full brother in our herd this summer
- backed by generations of good conformation and udders to pass on to buyer's herd

WETMORE BRITISHER 4C
MISS WETMORE BRITISHER 7C
SILVER STANDARD 21U
SILVER LADY 39S

BBSF 6P SPORT 232S
BANNERLANE GENSTAR LASS 27R
CTY EASY 705T
AGA 114L MISS STAR GENERAL 47S



62

AGA 106D DEPEND LAD 62F

C03053165 U 62F APRIL 04 2018

BW:	84
205:	556
'20 EPDs	
CE:	4
BW:	4.1
WW:	37.8
YW:	64.2
MCE:	3.3
Milk:	15.4
TM:	34.3

KGA 125R LAD 48A
AGA 48A DEPENDABLE LAD 106D
AGA 72S MISS BERT ANDY BIRD 8B

AGA 26R WHAM HAMMER 87W
AGA 87W MISS DIA WHAM 78D
CFH 129S LASS 153Y

- **HEIFER BULL** - light birthweight plus above average performance at both WN & YR
- sired by 106D, who we used as a yearling then sold to Harvey Goetz of Bluffton, AB (who's very happy with his offspring)
- ultrasound scanned REA 1.11/100 lbs and MARB 110 index
- 50% pigment on one eye and red testicles
- out of a nice feminine young cow with a uniform udder

KGA 33H LAD 125R
KGA 50N LASS 7S
96 ANDY 72S
AGA 72R MISS LADDIE 105U

LFF 5L JACK HAMMER 26R
AGA 44K MISS OLD DOMINO 252M
CARLRAMS 48H HUGO 129S
CFH 82N LASS 662S



63

AGA 20Z SPORT FORECAST 63F

C03053166 U 63F APRIL 04 2018

BW:	82
205:	589
'20 EPDs	
CE:	3.5
BW:	4.3
WW:	44.4
YW:	65.9
MCE:	1.1
Milk:	19.6
TM:	41.8

BANNERLANE 232 EXTRA GEN 60W
AGA 60W BANNER SPORT ZOOM 20Z
AGA 53L MISS RED DOMINO 1W

AGA 114L GENERAL WILEY 24W
AGA 24W MISS GEN WILEY 101B
AGA 87W MISS DIA WHAM 97Z

- Top % of Breed: MARB 21%
- handsome bull who brings thickness and performance with red testicles, red eyes and red neck ▪ sired by 20Z, who's leaving good conformation with thickness & soundness ▪ dam is feminine, moderate-sized, with a great udder ▪ ultrasound scans a very nice REA 136 index (1.21/100 lbs!!), RibFat (163 index) MARB 107 index - all great ultrasound scores. ▪ 82 lb birthweight - 63F **can be used on heifers** (retaining semen interest)

BBSF 6P SPORT 232S
BANNERLANE GENSTAR LASS 27R
AGA 22B BRIGADER 53L
AGA 21M MISS STANMORE 617S

AGA 13G GENERAL 114L
AGA 118L MISS STANDARD 2R
AGA 26R WHAM HAMMER 87W
AGA 21M MISS STANMORE 17T

ULRICH HEREFORD RANCH COMING 2's



66

AGA 28Z SPORT FORMULA 66F

C03054858 U 66F APRIL 06 2018

BW:	96
205:	652
'20 EPDs	
CE:	0.3
BW:	6.2
WW:	50
YW:	74.3
MCE:	0
Milk:	20.4
TM:	45.4

BANNERLANE 232 EXTRA GEN 60W
AGA 60W BANNER SPORT ZEAL 28Z
AGA 705 MISS EASYGOING 905W

AGA 114L GENERAL WILEY 24W
AGA 24W MISS GEN WILEY 67B
AGA 20S MISS OAK 14W

BBSF 6P SPORT 232S
BANNERLANE GENSTAR LASS 27R
CTY EASY 705T
AGA 114L MISS STAR GENERAL 47S

AGA 13G GENERAL 114L
AGA 118L MISS STANDARD 2R
S BIG OAK 20S ET
AGA 85A MISS STD BRIT 144H

- high performance bull (119 WN index and 107 YR index) from the proven sire 28Z
- one goggle eye, red testicles and red neck
- handsome, strong top and good quarters
- ultrasound MARB 105 index with a Lean Meat Yield 66.1 - a real meat machine!
- dam has a great udder with small well-placed teats (compliments of her sire, 24W)

Dam pictured on inside back cover



68

AGA 2Y MO LE DOMINO FULTON 68F

C03054859 U 68F APRIL 06 2018

BW:	88
205:	585
'20 EPDs	
CE:	3
BW:	4.2
WW:	38.7
YW:	60.3
MCE:	1.5
Milk:	17.7
TM:	37.1

MR MO LE 47F
AGA 47F DOMINO ET 2Y
AGA 22B MISS BRIGADER 511E

AGA 705 EASYGOING EXPRESS 67X
AGA 67X MS EXPRESS DAYSTAR 44D
AGA 114L MISS GENERAL 141X

DOUBLE MO LE 12B
D STANDARD LASS 88B
CTY BRIGADER 22B
AGA MISS 42X STANMORE 94Z

CTY EASY 705T
AGA 21M MISS STANMORE 22T
AGA 13G GENERAL 114L
AGA 53L MISS RED DOMINO 116R

- nice mossy haircoat - tailored by the sire, 2Y!
- sire 2Y's been leaving consistent excellent udders
- good performance
- dam is a really nice cow with mossy hair and really excellent udder and good sound feet
- ultrasound REA 107 index, 1.11/100 lbs



69

AGA 28Z SPORT 69F

C03067022 U 69F APRIL 07 2018

BW:	94
205:	579
'20 EPDs	
CE:	4.2
BW:	4.5
WW:	43.4
YW:	65.9
MCE:	-1.2
Milk:	15.7
TM:	37.4

BANNERLANE 232 EXTRA GEN 60W
AGA 60W BANNER SPORT ZEAL 28Z
AGA 705 MISS EASYGOING 905W

LCI 68R RED STANDARD 109U
AGA 109U MISS EXACT STAN 125X
AGA 44K MISS OLD DOMINO 252M

BBSF 6P SPORT 232S
BANNERLANE GENSTAR LASS 27R
CTY EASY 705T
AGA 114L MISS STAR GENERAL 47S

JNHR RED STANDARD 68R
LCI KD CRYSTAL 7N
AGA 1S OLD DOMINO 44K
AGA 102E MISS EXTRA 190K

- sire 28Z left 69F two goggle eyes, red testicles, and a red neck
- good performance
- all-round good bull
- ultrasound: REA 117 index, 1.13/100 lbs, Lean Meat Yield 65.4%
- dam 125X was a thick, deep-bodied, mossy-haired cow



72

AGA 60D STAN DRUM FICTION 72F

C03053236 U 72F APRIL 07 2018

BW:	79
205:	566
'20 EPDs	
CE:	6.3
BW:	3.3
WW:	44.2
YW:	61.4
MCE:	2.1
Milk:	15
TM:	37.1

AGA 18Y ZOOM STANDARD 18Z
AGA 18Z ZOOM STAN DRUMROLL 60D
AGA 109U MISS RIB STAN 117Z

AGA 60W BANNER SPORT ZEAL 28Z
AGA 28Z MISS SPORT ZEAL 115B
AGA 2U MISS BRITISHER 171Y

AGA 55C STANDARD 18Y
AGA 21M MISS STANMORE 76S
LCI 68R RED STANDARD 109U
AGA 21M MISS STANMORE 126T

BANNERLANE 232 EXTRA GEN 60W
AGA 705 MISS EASYGOING 905W
AGA 46E BRITISHER ET 2U
AGA 114L MISS GENERAL 24U

- Top % of Breed: CE 20%, MARB 17%
- **HEIFER BULL** with good performance to boot
- one goggle eye, the other has 80% pigment
- red testicles and red neck
- wide top, good haircoat, sired by 60D
- moderate-sized dam, 115B, calves easy - curly hair coat - tight udder, well-placed teats
- ultrasound: REA 106 index, 1.04/100 lbs but still a 112 MARB index

ULRICH HEREFORD RANCH COMING 2's

73



BW:	96
205:	608
'20 EPDs	
CE:	0.1
BW:	6.2
WW:	50.8
YW:	75.8
MCE:	-0.9
Milk:	10.8
TM:	36.2

AGA 18Z ZOOM STAN FEATURE 73F

C03053238 U 73F APRIL 07 2018

AGA 55C STANDARD 18Y
AGA 18Y ZOOM STANDARD 18Z
 AGA 21M MISS STANMORE 76S

AGA 85J STANDARD 118L
AGA 118L MISS STANDARD 3Y
 AGA 53L MISS RED DOMINO 218N

SILVER STANDARD 55C
 MISS 46E BRITISHER AGA 22L
 AGA 20J STANMORE 21M
 AGA 101J MISS STANDARD 140P

AGA 191G STANDARD 85J
 AGA 40Y MISS BRITISHER 168F
 AGA 22B BRIGADER 53L
 AGA 656U MISS STANDARD 107J

- excellent performance, sired by 18Z who leaves that length & good quarters - (WN index 111, YR index 105) Dec 7th, 2019 weight 1775 lbs
- great haircoat, 66% red testicles, one eye has 80% pigment, the other 100% •mother 3Y always raises excellent calves with a great pedigree...great substance & soundness
- great ultrasound figures: 106 REA index, 1.00/100 lbs, MARB 108 index, Lean Meat Yield 64.3%

Dam pictured on back cover

76



BW:	85
205:	592
'20 EPDs	
CE:	7.1
BW:	2.7
WW:	42.7
YW:	74
MCE:	1.4
Milk:	14.2
TM:	35.6

AGA 97C BRIT CAN-DO FRIDAY 76F

C03053241 U 76F APRIL 07 2018

46E BRITISHER AGA 15H
AGA 15H BRIT CANDIDATE ET 97C
 AGA 656U MISS STANDARD ET 17H

WH 9A RUST TEMPEST 372A
AGA 372A MISS RUSTY 14C
 AGA 705 MISS EASYGOING 6Y

DP BRITISHER AGA 46E
 MISS DP AGA 121E
 STANDRD LAD 656 4ET
 AGA MISS 80S VOLTAGE ET 14X

XTD 6T RUST TEMPEST ET 9A
 WICHMAN LADY 06
 CTY EASY 705T
 AGA 21M MISS STANMORE 76S

- Top % of Breed: CE 16% RFI 14%
- 85 lbs BW - heifer bull and bonus excellent performance (WN 108 index and YR 111 index) - massive bull now... (1755 lbs on Dec 7th, 2019) •handsome - good haircoat - red testicles, red neck, - one eye 100% pigment • great quarters with a nice head and shoulders in...
- ultrasound: REA 127 index, 1.16 / 100 lbs and LMY 65.4%
- the pedigree: wow - some good genetics (656 & 15H) on top - and 9A & Easy 705T & 21M on the bottom • **RETAINING SEMEN INTEREST**

80



BW:	86
205:	617
'20 EPDs	
CE:	7.3
BW:	5.4
WW:	53.3
YW:	86.6
MCE:	3.3
Milk:	13.2
TM:	39.9

AGA 60D STAN DRUM 80F

C03053246 U 80F APRIL 09 2018

AGA 18Y ZOOM STANDARD 18Z
AGA 18Z ZOOM STAN DRUMROLL 60D
 AGA 109U MISS RIB STAN 117Z

AGA 53A STANDARD ET 4R
AGA 4R MISS STANDARD 26T
 AGA 124J MISS STANDARD 9L

AGA 55C STANDARD 18Y
 AGA 21M MISS STANMORE 76S
 LCI 68R RED STANDARD 109U
 AGA 21M MISS STANMORE 126T

SGC 14X STANDARD LAD 53A
 AGA 22B MISS BRIGADER 511E
 AGA 656U STANDARD ET 124J
 AGA K58 MISS STANMORE 38B

- Top % of Breed: CE 15%
- a great bull (like his sire, 60D) with incredible performance (WN 112 index and YR 117 index) Dec 7th, 2019 weight - 1776 lbs
- lots of length, good haircoat, big testicles, very sound
- good pedigree with longevity & soundness backed by thick, deep, sound cattle • fabulous all-around mother, 26T
- Lean Meat Yield 64.6% - pounds and pounds of meat

81



BW:	96
205:	664
'20 EPDs	
CE:	1.7
BW:	6
WW:	59.6
YW:	95.7
MCE:	2.4
Milk:	17.6
TM:	47.4

AGA 60D STAN DRUM FORTRESS 81F

C03053248 U 81F APRIL 09 2018

AGA 18Y ZOOM STANDARD 18Z
AGA 18Z ZOOM STAN DRUMROLL 60D
 AGA 109U MISS RIB STAN 117Z

AGA 705 EASYGOING EXPRESS 67X
AGA 67X MISS EXPRESS ET 13B
 AGA 46E MISS BRITISHER 40T

AGA 55C STANDARD 18Y
 AGA 21M MISS STANMORE 76S
 LCI 68R RED STANDARD 109U
 AGA 21M MISS STANMORE 126T

CTY EASY 705T
 AGA 21M MISS STANMORE 22T
 DP BRITISHER AGA 46E
 AGA 124J MISS STANDARD ET 32R

- Top % of Breed: WN 18%, YR 18%, SC 10%, PWG 25%
- the Meat Machine! #1 on WN (Index 121) and #1 on YR (index 124) plus 1776 lbs on Dec 7th, 2019 • stout, broad back, good curly haircoat, big red testicles, red neck, beautiful temperament • much like his sire, a high performance bull 60D, who was also ranked #1 at both WN & YR in our herd • dam - full of substance and rich milk
- ultrasound - REA 118 index, RibFat 240 index, 136 Rump index
- **RETAINING SEMEN INTEREST**

ULRICH HEREFORD RANCH COMING 2's



84

BW:	70
205:	514
'20 EPDs	
CE:	9.6
BW:	1.9
WW:	38.2
YW:	66.3
MCE:	5.3
Milk:	17.1
TM:	36.2

AGA 60D STAN DRUM 84F

C03053249 U 84F APRIL 09 2018

AGA 18Y ZOOM STANDARD 18Z
AGA 182 ZOOM STAN DRUMROLL 60D
 AGA 109U MISS RIB STAN 117Z

AGA 22B BRIGADER 97J
AGA 97J MISS RED EXTRA 258P
 AGA 141J MISS STANDARD 191M

AGA 55C STANDARD 18Y
 AGA 21M MISS STANMORE 76S
 LCI 68R RED STANDARD 109U
 AGA 21M MISS STANMORE 126T

CTY BRIGADER 22B
 AGA 335C MISS EXTRA 8G
 AGA 191G STANDARD 141J
 AGA MISS CENTENNIAL 62C

- Top % of Breed: BW 26%, CE 7%, MARB 17%, MCE 13%, FMI 19%
- really sound excellent feet, compliments of his dam, 258P (sound as a rock), who raised a good calf year after year
- long son of 60D - red neck, red testicles, one goggle eye and the other 100% pigment
- ultrasound: REA 108 index 1.09/100 lbs, Lean Meat Yield 65.1%
- check out those "top of the breed" percentiles too!!!



91

BW:	79
205:	510
'20 EPDs	
CE:	5.8
BW:	3
WW:	45.6
YW:	70.7
MCE:	5.8
Milk:	22
TM:	44.8

AGA 407B BLASTOFF FARLEY 91F

C03053320 U 91F APRIL 11 2018

C 326N YES I CAN 127Y
AGA 127Y YES SIR BLASTOFF 407B
 AGA 97J MISS RED EXTRA 237M

AGA 20J STANMORE 21M
AGA 21M MISS STANMORE 123S
 AGA 97J MISS RED EXTRA 258P

BCD 140L DOM LAD 326N
 LONE-PINE ICE QUEEN 55T
 AGA 22B BRIGADER 97J
 AGA 3G MISS DON DANDY ET 135K

AGA 121G STANMORE 20J
 AGA 5C MISS ENERLAD 68K
 AGA 22B BRIGADER 97J
 AGA 141J MISS STANDARD 191M

- Top % of Breed: CE 23%, MARB 8%, MCE 10%, FMI 14% RFI 20%
- deep and solid - excellent feet and soundness
- FMI 137.9 (breed avg is +111.8) MPI 132.7 (breed avg is +122.3) MARB +.25 (breed avg is +.08) •ultrasound: REA 1.08/100 lb
- dam was a top notch cow - still around and first to the feedbunk
- double-bred 97J who brought good feet, longevity, nicer udders with well-placed teats, soundness and short gestation along with ease of calving



92

BW:	66
205:	549
'20 EPDs	
CE:	9.6
BW:	-0.1
WW:	34.1
YW:	59.2
MCE:	1.5
Milk:	19.8
TM:	36.9

AGA 97C BRIT CAN-DO 92F

C03053321 U 92F APRIL 11 2018

46E BRITISHER AGA 15H
AGA 15H BRIT CANDIDATE ET 97C
 AGA 656U MISS STANDARD ET 17H

GCC PETE 203Y ET
AGA 203Y MISS GREGORY PETE 82D
 AGA 94Y MS RISING BERNICE 131B

DP BRITISHER AGA 46E
 MISS DP AGA 121E
 STANDRD LAD 656 4ET
 AGA MISS 80S VOLTAGE ET 14X

UPS DOMINO 3027
 LPG STANDARD 44B LASS 50H
 YV 915W MR RISING STAR 94Y
 AGA 114L MISS GENERAL 54U

- Top % of Breed: BW 5%, CE 7%, MARB 14%, FMI 27%
- **HEIFER BULL** - 66 lb BW but was able to keep up with the pack, performing well...
- curly haircoat, red testicles, 100% pigment on one eye
- nice head - just like sire 97C who's now working for Justin Wichman in the States
- ultrasound: REA 1.04/100 lbs, MARB 112 index and Yield 64.9%



93

BW:	76
205:	578
'20 EPDs	
CE:	3.8
BW:	2.5
WW:	42.1
YW:	66.6
MCE:	1.4
Milk:	23.3
TM:	44.4

AGA 715T SUPERHERO FAN 93F

C03053322 U 93F APRIL 12 2018

CC 129D SUPERMAN 77J
AGA 77J SUPERMAN ET 715T
 AGA 656U MISS STANDARD ET 17H

GCC PETE 203Y ET
AGA 203Y MISS GREGORY PETE 46B
 AGA 60W MISS BANNER SPORT 22Z

FE 07Y SUPER 129D
 CC 42W JULIANA 66Z
 STANDRD LAD 656 4ET
 AGA MISS 80S VOLTAGE ET 14X

UPS DOMINO 3027
 LPG STANDARD 44B LASS 50H
 BANNERLANE 232 EXTRA GEN 60W
 AGA 114L MISS GENERAL 57W

- **HEIFER BULL** - light birthweight and yet performed well in both WN & YR
- one red eye and red testicles, stout and sound • good haircoat and nice eye-set •
- ultrasound: REA 115 index, 1.11/100 lbs
- dam is a moderate- sized, deep cow with curly haircoat & nice level udder
- used sire 715T by AI (owned with Cavan Ranch of Cypress County, AB)

ULRICH HEREFORD RANCH COMING 2's



99

AGA 407B BLASTOFF FAIRMONT 99F

C03053380 U 99F APRIL 13 2018

BW:	88
205:	568
'20 EPDs	
CE:	3.1
BW:	3.6
WW:	48.7
YW:	72.3
MCE:	2.9
Milk:	17.9
TM:	42.3

C 326N YES I CAN 127Y
AGA 127Y YES SIR BLASTOFF 407B
AGA 97J MISS RED EXTRA 237M

BANNERLANE 232 EXTRA GEN 60W
AGA 60W MISS BANNER SPORT 43Z
AGA 114L MISS GENERAL 54U

BCD 140L DOM LAD 326N
LONE-PINE ICE QUEEN 55T
AGA 22B BRIGADER 97J
AGA 3G MISS DON DANDY ET 135K

BBSF 6P SPORT 232S
BANNERLANE GENSTAR LASS 27R
AGA 13G GENERAL 114L
AGA 154F MISS BRITISHER 159H

- Top % of Breed: MARB 19%
- sired by 407B a high-indexing bull (WN & YR)
- red testicles, red neck, exhibits conformation and appearance much like sire 407B, and will keep on growing too
- dam is a moderate-sized, thick as thick mother with a nice udder, red eyes and a well- marked haircoat
- ultrasound: Ribfat 125 index, Rump 136 index, REA 105 index (1.07 / 100 lbs), MARB 113 index



101

AGA 13A BRITISHER FIRM 101F

?Y55327 U 101F APRIL 14 2018

BW:	89
205:	644
'20 EPDs	
CE:	-3.3
BW:	5.9
WW:	54.5
YW:	78.8
MCE:	-0.1
Milk:	20.9
TM:	48.2

AGA 46E BRITISHER ET 2U
AGA 2U BRITISHER 13A
AGA 26T MISS JARROD EXCITE 13X

C 326N YES I CAN 127Y
AGA 127Y MS YES MAAM ABBA 316A
AGA 114L MISS GENERAL 95T

DP BRITISHER AGA 46E
AGA 22B MISS BRIGADER 511E
CC 77J JARROD 26T
AGA 53L MISS RED DOMINO 80S

BCD 140L DOM LAD 326N
LONE-PINE ICE QUEEN 55T
AGA 13G GENERAL 114L
AGA 21M MISS STANMORE 151P

- Top % of Breed: SC 10%
- great bull, balanced throughout, sired by 13A who's had great calves for Joe Westover in Nebraska
- super performance (WN index 117 and YR index 107) - all from an 89 lb BW
- attractive, great haircoat, marked well, red eyes, red neck, red testicles
- deep, long, with REA 123 index, 1.16 / 100 lbs, top Lean Meat Yield of 66.4%
- outstanding dam 316A is well put together with lots of volume and stretch
- **HERD BULL PROSPECT** (retaining semen interest)

Dam pictured on back cover



102

AGA 16D DRAFT 102F

C03053382 U 102F APRIL 14 2018

BW:	71
205:	516
'20 EPDs	
CE:	0.5
BW:	2.9
WW:	41.2
YW:	64.6
MCE:	-3.7
Milk:	17.9
TM:	38.5

AGA 26R WHAM HAMMER 87W
AGA 87W HAMMER DRAFTSMAN 16D
AGA 203Y MISS GREGORY PETE 67A

AGA 18Y ZOOM STANDARD 18Z
AGA 18Z MS ZOOM STAN DARLA 10D
AGA 60W MISS BANNER SPORT 14Z

LFF 5L JACK HAMMER 26R
AGA 44K MISS OLD DOMINO 252M
GCC PETE 203Y ET
AGA 114L MISS GENERAL 19Y

AGA 55C STANDARD 18Y
AGA 21M MISS STANMORE 76S
BANNERLANE 232 EXTRA GEN 60W
AGA 114L MISS GENERAL 20X

- **HEIFER BULL** - light birthweight, 71 lbs
- dam came from a great cow family, (14Z & 20X), nice little udder
- sired by 16D, a well-put-together, well-marked, thick, well-quartered, good-footed herd sire
- paternal granddam (67A) is an excellent cow with great volume, superb udder & excellent pedigree



117

AGA 16D DRAFT 117F

C03053561 U 117F APRIL 20 2018

BW:	93
205:	596
'20 EPDs	
CE:	-2.6
BW:	6.2
WW:	47.4
YW:	74.6
MCE:	0.3
Milk:	21.5
TM:	45.2

AGA 26R WHAM HAMMER 87W
AGA 87W HAMMER DRAFTSMAN 16D
AGA 203Y MISS GREGORY PETE 67A

AGA 705 EASYGOING EXPRESS 67X
AGA 67X MISS CASEY EXPRESS 48C
AGA 26T MISS JARROD 85X

LFF 5L JACK HAMMER 26R
AGA 44K MISS OLD DOMINO 252M
GCC PETE 203Y ET
AGA 114L MISS GENERAL 19Y

CTY EASY 705T
AGA 21M MISS STANMORE 22T
CC 77J JARROD 26T
AGA 101J MISS STANDARD 97R

- Top % of Breed: SC 24% RFI 20%
- great performance (WN Index 108, YR index 107)
- long, correct, 100% pigment both eyes, red neck, red testicles
- history of good animals behind him: marked well, lots of substance, soundness and excellent feet & udders (well positioned) rich milk etc, etc.
- ultrasound: MARB 106 index

ULRICH HEREFORD RANCH COMING 2's



120

BW:	82
205:	493
'20 EPDs	
CE:	3.8
BW:	3.7
WW:	40.9
YW:	70.2
MCE:	-1.2
Milk:	17.4
TM:	37.9

AGA 16D DRAFT FIELD 120F

C03053603 U 120F APRIL 22 2018

AGA 26R WHAM HAMMER 87W
AGA 87W HAMMER DRAFTSMAN 16D
 AGA 203Y MISS GREGORY PETE 67A

LFF 5L JACK HAMMER 26R
 AGA 44K MISS OLD DOMINO 252M
 GCC PETE 203Y
 AGA 114L MISS GENERAL 19Y

AGA 53A STANDARD ET 4R
AGA 4R MISS BOWS STANDARD 24B
 AGA 70N MISS BRIT DOM 805U

SGC 14X STANDARD LAD 53A
 AGA 22B MISS BRIGADER 511E
 AGA 79H BRIT DOM ET 70N
 AGA 53L MISS RED DOMINO 102S

- Top % of Breed: SC 24%
- light birthweight **HEIFER BULL** by 16D
- pedigree is filled with light birthweight cattle
- attractive, deep, good top, well-marked, 100% pigment in both eyes and red testicles
- REA 1.16/100 lbs (112 index)
- attractive dam 24B has soundness, great substance and thickness



136

BW:	89
205:	572
'20 EPDs	
CE:	0.4
BW:	3.5
WW:	44.2
YW:	81.9
MCE:	2.6
Milk:	23
TM:	45.1

AGA 110C MO LE CHUCK 136F

C03053669 U 136F APRIL 27 2018

AGA 2Y MO LE DOMINO 137A
AGA 137A MO LE BRIT CHUCK 110C
 AGA 67X MISS ALTO EXPRESS 78A

AGA 47F DOMINO ET 2Y
 AGA 2U MISS BRITISHER 123Y
 AGA 705 EASYGOING EXPRESS 67X
 AGA 114L MISS GENERAL 104W

96 ANDY 72S
AGA 72S MISS BERT ANDY BIRD 8B
 AGA 72R MISS LADDIE 105U

96 ANDY 7L
 96 EVE 18N
 KGA 33H LAD 72R
 AGA 21M MISS STANMORE 110S

- Top % of Breed: PWG 18% (Post Weaning Gain)
- excellent feet, lots of red (mostly pigmented on both eyes, red testicles and red neck) ▪ performed well (WN 104 index, YR 108 index)
- wide-backed, excellent muscle - much like the sire 110C ▪ did well in summer (born April 27th) yet weighed 1709 lbs Dec 7th, 2019 (gaining 3.23 lbs/day) ▪ ultrasounded very well in REA (106 index, 1.01/100 lbs), MARB 106 index, and still Yielded 64.5% ▪ great maternal cow line that has given us excellent feet & great curly haircoats



139

BW:	80
205:	486
'20 EPDs	
CE:	4.5
BW:	2.9
WW:	35.8
YW:	61.2
MCE:	-1.1
Milk:	16.9
TM:	34.8

AGA 97C BRIT CAN-DO 139F

C03053772 U 139F APRIL 28 2018

46E BRITISHER AGA 15H
AGA 15H BRIT CANDIDATE ET 97C
 AGA 656U MISS STANDARD ET 17H

DP BRITISHER AGA 46E
 MISS DP AGA 121E
 STANDRD LAD 656 4ET
 AGA MISS 80S VOLTAGE ET 14X

AGA 4P RIBSTONE 34T
AGA 34T MISS RIBSTONE KIN 08X
 AGA 41F MISS HI STANDARD 53S

LCI 157K RIBSTONE 4P
 AGA 101J MISS STANDARD 140P
 BANNERLANE HI STANDARD 41F
 AGA 335C MISS EXTRA 8G

- Top % of Breed: MARB 21% RFI 14%
- **HEIFER BULL** from sire 97C
- red eyes, mostly red testicles, red neck, thick, wide top, well quartered
- good haircoat
- well-built dam has lots of substance, volume, thickness



146

BW:	84
205:	549
'20 EPDs	
CE:	5.1
BW:	2.6
WW:	39.4
YW:	62.2
MCE:	-0.5
Milk:	20.2
TM:	39.9

AGA 16D DRAFT FACEOFF 146F

C03053955 U 146F MAY 04 2018

AGA 26R WHAM HAMMER 87W
AGA 87W HAMMER DRAFTSMAN 16D
 AGA 203Y MISS GREGORY PETE 67A

LFF 5L JACK HAMMER 26R
 AGA 44K MISS OLD DOMINO 252M
 GCC PETE 203Y ET
 AGA 114L MISS GENERAL 19Y

AGA 47F DOMINO ET 2Y
AGA 2Y MISS MO LE DOMINO 96B
 AGA 60W MISS BANNER SPORT 14Z

MR MO LE 47F
 AGA 22B MISS BRIGADER 511E
 BANNERLANE 232 EXTRA GEN 60W
 AGA 114L MISS GENERAL 20X

- Top % of Breed: CE 27%
- **HEIFER BULL** with performance (YR index 104), sired by 16D
- wide & excellent quarters
- both eyes red, red testicles
- MARB 105 index
- moderate-sized dam 96B - great pedigree including great udders & well-placed teat

ULRICH HEREFORD RANCH COMING 2's

149



BW:	85
205:	595
'20 EPDs	
CE:	0.7
BW:	5.5
WW:	46.7
YW:	86
MCE:	2.4
Milk:	21.3
TM:	44.7

AGA 110C MO LE CHUCK FIT 149F

C03054018 U 149F MAY 06 2018

AGA 2Y MO LE DOMINO 137A
AGA 137A MO LE BRIT CHUCK 110C
 AGA 67X MISS ALTO EXPRESS 78A

AGA 109U RIB STANDARD 20Y
AGA 20Y MISS BRIT STAN 40D
 AGA 5T MISS STANMORE DOM 3W

AGA 47F DOMINO ET 2Y
 AGA 2U MISS BRITISHER 123Y
 AGA 705 EASYGOING EXPRESS 67X
 AGA 114L MISS GENERAL 104W

LCI 68R RED STANDARD 109U
 AGA 70N MISS BRIT DOM 62S
 AGA 26R STANMORE 5T
 AGA 40Y MISS BRITISHER 88F

- Top % of Breed: PWG 12%
- **HEIFER BULL** plus performance (108 WN index, 112 YR index) like the easy-keeping, wide-topped, well-quartered sire 110C
- stout, lots of volume and excellent top just like his easy-fleshing dam 40D (she had lots of rich milk to add pounds onto the calf)
- red testicles, red neck and some pigment on both eyes
- ultrasound: REA 117 index (1.14/100 lbs) Yield 66.2% - lots of meat

152



BW:	88
205:	549
'20 EPDs	
CE:	3.2
BW:	3.1
WW:	38.3
YW:	59.6
MCE:	0
Milk:	20.8
TM:	40

AGA 16D DRAFT FREEZE 152F

C03054021 U 152F MAY 09 2018

AGA 26R WHAM HAMMER 87W
AGA 87W HAMMER DRAFTSMAN 16D
 AGA 203Y MISS GREGORY PETE 67A

AGA 47F DOMINO ET 2Y
AGA 2Y MISS MO LE DOMINO 128A
 AGA 24W MISS GEN WILEY 144Y

LFF 5L JACK HAMMER 26R
 AGA 44K MISS OLD DOMINO 252M
 GCC PETE 203Y ET
 AGA 114L MISS GENERAL 19Y

MR MO LE 47F
 AGA 22B MISS BRIGADER 511E
 AGA 114L GENERAL WILEY 24W
 AGA 70N MISS BRIT DOM 33U

- wonderful pedigree
- long body, red testicles, red neck, lots of pigment on both eyes
- good ultrasound data: REA 104 index (1.07/100 lbs), MARB 114 index and still had a Yield of 64.1%
- very young (born May 9th) with lots of potential to keep on growing (summered well and December's daily gain was 3.11 lbs (1604 lbs on Dec 7th))

Dam pictured on inside back cover

CLARESHOLM VETERINARY SERVICES, LTD.

Box 2350, Claresholm AB T0L 0T0 (403) 625-3677

K. WRIGHT, DVM K. VANDERVALK, DVM J. SOUCY, DVM

January, 2020

Claresholm Veterinary Services Ltd. has been providing veterinary service and consultation for over 40 years to the Ulrich Hereford Ranch. The majority of the service consists of breeding soundness evaluations of the bulls and herd health consultation.

Health problems are minimized with a complete vaccination program for cows, calves, bulls. Calves are vaccinated with the Zoetis Select Vac Gold Plus vaccine program (the comprehensive program to protect against respiratory disease and BVD) in the spring at pasture turn out and at weaning in the fall. The replacement heifers receive Bovi-Shield Gold FP5-VL5 in the spring before breeding. The cow herd receives Bovi-Shield Gold FP5-VL5 prior to calving. Cows and heifers also receive a scour prevention vaccine annually as well as a clostridial vaccine. The bulls receive Bovi-Shield FP5-VL5 in the spring as a yearling and are boosted with this again prior to the sale as a 2 year old.

Claresholm Veterinary Services Ltd. is proud to be associated with the Ulrich Hereford Ranch and their cattle operation.

zoetis

FOR ANIMALS. FOR HEALTH. FOR YOU.

16740 Trans-Canada Highway
 Kirkland, QC, H9M 4M7
 403.462.9972
 1.800.999.2857 Ext 2836
 steve.brander@zoetis.com
 Visit Us: zoetis.com

Steve Brander
 Senior Territory manager

UFA

Co-operative Limited

4424 - 2 Street E.
 P.O. Box 8
 Claresholm, Alberta T0L 0T0
 www.ufa.net

SHELLEY O'NEIL

Agent
 Claresholm / Nanton Agency
 Skyline Petroleum Ltd.

Claresholm: (403) 625-3593
 Nanton: (403) 646-2424
 Cell: (403) 625-8952
 Fax: (403) 625-4791
 Home: (403) 625-3059

Nutrien

Ag Solutions™

Po Box 667
 420 43rd Ave E
 Claresholm, AB T0L 0T0

Dustin Butler
 Branch Manager

☎ 403.336.4619
 ☎ 403.625.3329
 ☎ 403.625.4145
 dustin.butler@nutrien.com
 nutrienagsolutions.ca

trouw nutrition

a Nutreco company

SHUR GAIN

Dave Thorlakson
 Business Development Manager

T. +1 403 328 1731
 C. +1 403 308 3620
 dave.thorlakson@nutreco.ca

F. +1 403 328 5515

Trouw Nutrition Canada, 1810 - 39 Street North, Lethbridge, AB T1H 5J2
 www.trouwnutrition.ca

ULRICH HEREFORD RANCH LONG YEARLINGS



802

BW:	64
205:	546
'20 EPDs	
CE:	13.8
BW:	-2.1
WW:	34.1
YW:	60.1
MCE:	6.1
Milk:	22.5
TM:	39.6

AGA 36C SILVER KAP 802F

C03056244 U 802F SEPTEMBER 02 2018

JEN 195T KAP 17Z
JEN SILVER KAP 36C
 JEN 11R SILVER LASS 34U

FA 109L BRITISHER 195T
 JEN KAP GEN 28R
 TRIPLE-A MAX'S RRSP 11R
 JEN SILVER LADY 5N

GCC PETE 203Y ET
AGA 203Y MS GREGORY PETE 602D
 AGA 127Y MS YES MAAM BABE 404B

UPS DOMINO 3027
 LPG STANDARD 44B LASS 50H
 C 326N YES I CAN 127Y
 AGA 26T MISS JARROD 65X

- Top % of Breed: BW 2%, CE 1%, MARB 21%, MCE 8%, FMI 22%
- moderate-sized, stout **HEIFER BULL** with a curly haircoat
- good performance from Newton's 36C
- 64 lb BW - up quick with great vigour and spunk
- great momma with a perfect udder, great haircoat - great maternal strength in the pedigree



809

BW:	73
205:	519
'20 EPDs	
CE:	10.3
BW:	1.8
WW:	39
YW:	56.2
MCE:	7.2
Milk:	23
TM:	42.6

AGA 160A WIND EXACT 809F

C03056638 U 809F SEPTEMBER 17 2018

BRETON WEST 129S EXACT RIB 42X
WINDIMUIR 42X EXACT 160A
 WINDIMUIR MAVIS 52S

SGC 34P RIBSTONE LAD 129S
 LP ADV 93J SANDY 93S
 DBHR 68J EXTRA 149N
 WINDIMUIR MAVIS 40N

AGA 85J STANDARD 118L
AGA 118L MISS STANDARD 2R
 AGA 97J MISS RED EXTRA 203N

AGA 191G STANDARD 85J
 AGA 40Y MISS BRITISHER 168F
 AGA 22B BRIGADER 97J
 AGA 15H MISS BRITISHER 106L

- Top % of the Breed: BW 24%, CE 5%, MARB 12%, MCE 4%
- **HEIFER BULL** built with a moderate frame filled with potential
- 73 lb BW - check out the CE & BW EPDs (plus dam's own CE +16.1, BW 0.5, MCE +7.8, MPI +159.3 (breed avg 122.3), FMI +155.3 (breed avg 111.8), MARB +.40 (breed avg +.08))
- dam is phenomenal - raising 10 calves averaging 76 lb BW to above average weaning weights (elite donor dam)
- proven Windimuir herd sire, 160A



815

BW:	113
205:	620
'20 EPDs	
CE:	-9.8
BW:	10
WW:	62.8
YW:	95.2
MCE:	-2.7
Milk:	16.1
TM:	47.5

AGA 160A WIND EXACT 815F

C03056673 U 815F SEPTEMBER 21 2018

BRETON WEST 129S EXACT RIB 42X
WINDIMUIR 42X EXACT 160A
 WINDIMUIR MAVIS 52S

SGC 34P RIBSTONE LAD 129S
 LP ADV 93J SANDY 93S
 DBHR 68J EXTRA 149N
 WINDIMUIR MAVIS 40N

AGA 114L GENERAL 105T
AGA 105T MISS STAN GENERAL 42B
 AGA 81S MISS RIBSTONE 49W

AGA 13G GENERAL 114L
 AGA 4K MISS STANMORE 221N
 AGA 4P RIBSTONE 81S
 AGA 191G MISS STANDARD ET 58M

- Top % of Breed: WN 10%, YR 19%
- performance, performance! (WN index 117, YR index 107) son of Windimuir's 160A
- long, deep, correct, good-footed, red testicles, and mostly pigmented eyes
- tremendous dam, 42B, is raising an excellent calf in the fall program again this year



816

BW:	94
205:	628
'20 EPDs	
CE:	-0.7
BW:	5
WW:	49.2
YW:	85.2
MCE:	-1.1
Milk:	19.9
TM:	44.5

AGA 110C MO LE CHUCK FILL 816F

C03056806 U 816F SEPTEMBER 25 2018

AGA 2Y MO LE DOMINO 137A
AGA 137A MO LE BRIT CHUCK 110C
 AGA 67X MISS ALTO EXPRESS 78A

AGA 47F DOMINO ET 2Y
 AGA 2U MISS BRITISHER 123Y
 AGA 705 EASYGOING EXPRESS 67X
 AGA 114L MISS GENERAL 104W

AGA 18Y ZOOM STANDARD 18Z
AGA 18Z MS ZOOM STAN BERRY 92B
 AGA 114L MISS GENERAL 104W

AGA 55C STANDARD 18Y
 AGA 21M MISS STANMORE 76S
 AGA 13G GENERAL 114L
 AGA 41F MISS HI STANDARD 90P

- Top % of Breed: PWG 26%
- fantastic performance (118 WN index, 107 YR index)!
- like father, like son - we like what 110C brings: lots of substance, lots of flesh, lots of quarter
- wide top, lots of pigment, lots of hair, goggle eyes, red testicles & red neck
- very red dam from a really good cow family

ULRICH HEREFORD RANCH LONG YEARLINGS



819

AGA 160A WIND EXACT FORM 819F

C03056853 U 819F SEPTEMBER 30 2018

BW:	98
205:	604
'20 EPDs	
CE:	-3.7
BW:	6.3
WW:	52.4
YW:	73.8
MCE:	0.1
Milk:	22.1
TM:	48.3

BRETON WEST 129S EXACT RIB 42X
WINDIMUIR 42X EXACT 160A
WINDIMUIR MAVIS 52S

AGA 114L GENERAL WILEY 24W
AGA 24W MS GEN WILEY BEEP 88B
AGA 60W MISS BANNER SPORT 44Z

- another son of 160A who performed really well on the mother (WN 114 index)
- attractive, yellow mossy haircoat - well-marked, 100% pigment both eyes and red testicles
- pretty momma (red, sound & level udder) with lots of rich milk

SGC 34P RIBSTONE LAD 129S
LP ADV 93J SANDY 93S
DBHR 68J EXTRA 149N
WINDIMUIR MAVIS 40N

AGA 13G GENERAL 114L
AGA 118L MISS STANDARD 2R
BANNERLANE 232 EXTRA GEN 60W
AGA 82K MISS KAPTAIN ET 1X

820

AGA 160A WIND EXACT FORT 820F

C03056854 U 820F OCTOBER 03 2018

BW:	86
205:	487
'20 EPDs	
CE:	0.3
BW:	4.6
WW:	40.5
YW:	66
MCE:	1.8
Milk:	13.8
TM:	34.1

BRETON WEST 129S EXACT RIB 42X
WINDIMUIR 42X EXACT 160A
WINDIMUIR MAVIS 52S

C 82F MICKS KAPTAIN 82K
AGA 82K MISS KAPTAIN ET 25T
AGA 85A MISS BRITISHER 74J

- deep-bodied, well-marked, both eyes goggled, red testicles and red neck, sired by 160A who's leaving great offspring
- impressive mother 25T - attractive, feminine, deep, great udder (flat with well-placed teats (short all her life)) & sound feet, raising great calves - an elite donor dam cow

SGC 34P RIBSTONE LAD 129S
LP ADV 93J SANDY 93S
DBHR 68J EXTRA 149N
WINDIMUIR MAVIS 40N

STANDARD 85A DOMINO 82F
AC MISS 359 ROBINSON 63F
LLL FE STD BRIT 85A
AGA 852 MISS STANMORE ET 12C

821

AGA 160A WIND EXACT FIORD 821F

C03056855 U 821F OCTOBER 05 2018

BW:	88
205:	535
'20 EPDs	
CE:	2.9
BW:	4.7
WW:	45.3
YW:	69.7
MCE:	4.6
Milk:	21.8
TM:	44.5

BRETON WEST 129S EXACT RIB 42X
WINDIMUIR 42X EXACT 160A
WINDIMUIR MAVIS 52S

AGA 114L GENERAL WILEY 24W
AGA 24W MISS GEN WILEY BEE 76B
AGA 109U MISS RIB STAN 117Z

- Top % of Breed: MARB 21%, MCE 19%
- attractive, broad-topped, great quartered with natural thickness, lots of pants, solid feet - sired by 160A
- dam 76B is a pretty cow with a curly haircoat, red even in the flat well-placed udder and teats - a great pedigree, peppered with great individuals - proud to raise this great bull 821F
- MARB EPD is +.16 (breed avg .08)

SGC 34P RIBSTONE LAD 129S
LP ADV 93J SANDY 93S
DBHR 68J EXTRA 149N
WINDIMUIR MAVIS 40N

AGA 13G GENERAL 114L
AGA 118L MISS STANDARD 2R
LCI 68R RED STANDARD 109U
AGA 21M MISS STANMORE 126T

823

AGA 160A WIND EXACT FLANK 823F

C03056857 U 823F OCTOBER 15 2018

BW:	97
205:	578
'20 EPDs	
CE:	-3.5
BW:	6.7
WW:	50.6
YW:	76.6
MCE:	4.4
Milk:	19.2
TM:	44.5

BRETON WEST 129S EXACT RIB 42X
WINDIMUIR 42X EXACT 160A
WINDIMUIR MAVIS 52S

CC 77J JARROD 26T
AGA 26T MISS JARROD 85X
AGA 101J MISS STANDARD 97R

- Top % of Breed: MCE 20%
- long and lots of stretch from this son of 160A
- really good performance (WN index 109, YR index 104)
- phenomenal mother - mossy haircoat, attractive with an awesome udder, walks like a trooper through the years (beautiful maternal background)

SGC 34P RIBSTONE LAD 129S
LP ADV 93J SANDY 93S
DBHR 68J EXTRA 149N
WINDIMUIR MAVIS 40N

CC 129D SUPERMAN 77J
CC 14N JOCELYN 33R
AGA 656U STANDARD ET 101J
AGA 303Y MISS STANDARD 141E



ULRICH HEREFORD RANCH HEIFERS

32



BW:	83
205:	545
'20 EPDs	
CE:	-1.1
BW:	6
WW:	54.8
YW:	82.6
MCE:	2
Milk:	18.3
TM:	45.7

AGA 20Z MS SPORT FLIP FLOP 32F

C03052835 U 32F MARCH 29 2018

BANNERLANE 232 EXTRA GEN 60W
AGA 60W BANNER SPORT ZOOM 20Z
AGA 53L MISS RED DOMINO 1W

C 326N YES I CAN 127Y
AGA 127Y MISS YES MAAM 320A
AGA 26T MISS JARROD 65X

BBSF 6P SPORT 232S
BANNERLANE GENSTAR LASS 27R
AGA 22B BRIGADER 53L
AGA 21M MISS STANMORE 617S

BCD 140L DOM LAD 326N
LONE-PINE ICE QUEEN 55T
CC 77J JARROD 26T
AGA 26R MISS STANMORE 108T

Top % of Breed: RFI 11%

Exposed: July 8 - Aug 27, 2019 - AGA 203Y GREGORY PETE EDGE 49E

39



BW:	89
205:	572
'20 EPDs	
CE:	-1.5
BW:	6.4
WW:	49.8
YW:	78.1
MCE:	-2.2
Milk:	17.3
TM:	42.2

AGA 20Z MS SPORT FRUITY 39F

C03052904 U 39F MARCH 30 2018

BANNERLANE 232 EXTRA GEN 60W
AGA 60W BANNER SPORT ZOOM 20Z
AGA 53L MISS RED DOMINO 1W

AGA 26R WHAM HAMMER 87W
AGA 87W MISS DIA WHAM BRIO 39B
AGA 114L MISS GENERAL 89U

BBSF 6P SPORT 232S
BANNERLANE GENSTAR LASS 27R
AGA 22B BRIGADER 53L
AGA 21M MISS STANMORE 617S

LFF 5L JACK HAMMER 26R
AGA 44K MISS OLD DOMINO 252M
AGA 13G GENERAL 114L
AGA 53A MISS STANDARD ET 6R

Top % of Breed: RFI 11%

Exposed: June 19 - Aug 28, 2019 - AGA 137A MO LE BRIT CHUCK 110C

40



BW:	70
205:	507
'20 EPDs	
CE:	6.6
BW:	1.6
WW:	43.2
YW:	71.9
MCE:	6.2
Milk:	30.2
TM:	51.8

AGA 21M MS STANMORE FLOAT 40F

C03052905 U 40F MARCH 31 2018

AGA 121G STANMORE 20J
AGA 20J STANMORE 21M
AGA 5C MISS ENERLAD 68K

GCC PETE 203Y ET
AGA 203Y MS GREG PETE DOVE 42D
AGA 2Y MISS MO LE DOMINO 128A

AGA 4016D STANMORE 121G
AGA 40E MISS STANMORE 80G
XTC 15Z ENERLAD STAN 5C
AGA 154F MISS BRITISHER 159H

UPS DOMINO 3027
LPG STANDARD 44B LASS 50H
AGA 47F DOMINO ET 2Y
AGA 24W MISS GEN WILEY 144Y

Top % of Breed: BW 21% MILK 12%, CE 18%, MARB 14%, MCE 8%, MPI 4%, SCF 24%, FMI 26%

Exposed: June 30 - Aug 28, 2019 - AGA 125R LAD 48A

45



BW:	79
205:	511
'20 EPDs	
CE:	4.3
BW:	3.8
WW:	46.7
YW:	70.7
MCE:	3.1
Milk:	17.4
TM:	40.8

AGA 60D MISS STAN DRUM 45F

C03053038 U 45F APRIL 02 2018

AGA 18Y ZOOM STANDARD 18Z
AGA 18Z ZOOM STAN DRUMROLL 60D
AGA 109U MISS RIB STAN 117Z

AGA 46E BRITISHER ET 2U
AGA 2U MISS BRITISHER 59Z
AGA 21M MISS STANMORE 88S

AGA 55C STANDARD 18Y
AGA 21M MISS STANMORE 76S
LCI 68R RED STANDARD 109U
AGA 21M MISS STANMORE 126T

DP BRITISHER AGA 46E
AGA 22B MISS BRIGADER 511E
AGA 20J STANMORE 21M
AGA 656U MISS STANDARD ET 75P

Top % of Breed: SC 16%, MARB 10%

Exposed: June 30 - Aug 27, 2019 - AGA 87W HAMMER DRAFTSMAN 16D

ULRICH HEREFORD RANCH HEIFERS



54

AGA 110C MISS MO LE CHUCK 54F

C03053046 U 54F APRIL 03 2018

BW:	89
205:	528
'20 EPDs	
CE:	1.8
BW:	4.3
WW:	35.6
YW:	67.6
MCE:	1.6
Milk:	21.6
TM:	39.4

AGA 2Y MO LE DOMINO 137A
AGA 137A MO LE BRIT CHUCK 110C
 AGA 67X MISS ALTO EXPRESS 78A

AGA 26R WHAM HAMMER 87W
AGA 87W MS DIA WHAM CINEMA 84C
 AGA 5T MISS STANMORE DOM 3W

AGA 47F DOMINO ET 2Y
 AGA 2U MISS BRITISHER 123Y
 AGA 705 EASYGOING EXPRESS 67X
 AGA 114L MISS GENERAL 104W
 LFF 5L JACK HAMMER 26R
 AGA 44K MISS OLD DOMINO 252M
 AGA 26R STANMORE 5T
 AGA 40Y MISS BRITISHER 88F

Top % of Breed: RFI 11%

Exposed: July 8 - Aug 27, 2019 - AGA 203Y GREGORY PETE EDGE 49E



78

AGA 60D MISS STAN DRUM 78F

C03053243 U 78F APRIL 08 2018

BW:	83
205:	536
'20 EPDs	
CE:	1.2
BW:	4.8
WW:	46.4
YW:	74.6
MCE:	0.7
Milk:	19.3
TM:	42.5

AGA 18Y ZOOM STANDARD 18Z
AGA 18Z ZOOM STAN DRUMROLL 60D
 AGA 109U MISS RIB STAN 117Z

GCC PETE 203Y ET
AGA 203Y MS GREGORY PETE 128C
 AGA 93D MISS STANDARD ET 41R

AGA 55C STANDARD 18Y
 AGA 21M MISS STANMORE 76S
 LCI 68R RED STANDARD 109U
 AGA 21M MISS STANMORE 126T
 UPS DOMINO 3027
 LPG STANDARD 44B LASS 50H
 LLL 85A STANDARD 93D
 AGA MISS 80S VOLTAGE ET 14X

AI'd: June 30, 2019 - AGA 20J STANMORE 21M

Exposed: July 21 - Aug 28, 2019 - KGA 125R LAD 48A



103

AGA 16D MS DRAFT FLOSSIE 103F

C03053400 U 103F APRIL 15 2018

BW:	87
205:	608
'20 EPDs	
CE:	-1.9
BW:	4.7
WW:	44.5
YW:	66
MCE:	-2.1
Milk:	21.7
TM:	44

AGA 26R WHAM HAMMER 87W
AGA 87W HAMMER DRAFTSMAN 16D
 AGA 203Y MISS GREGORY PETE 67A

AGA 77J SUPER URANIUM 47U
AGA 47U LADY OF GRACE 304A
 AGA 656U MISS STANDARD ET 92P

LFF 5L JACK HAMMER 26R
 AGA 44K MISS OLD DOMINO 252M
 GCC PETE 203Y ET
 AGA 114L MISS GENERAL 19Y
 CC 129D SUPERMAN 77J
 AGA 44K MISS OLD DOMINO 252M
 STANDRD LAD 656 4ET
 AGA 852 MISS STANMORE 22C

Top % of Breed: SC 24%

AI'd: July 4, 2019 - AGA 20J STANMORE 21M

Exposed: July 22 - Aug 28, 2019 - AGA 137A MO LE BRIT CHUCK 110C



114

AGA 28Z MS SPORT ZEAL 114F

C03053559 U 114F APRIL 19 2018

BW:	75
205:	563
'20 EPDs	
CE:	7.1
BW:	3
WW:	45.7
YW:	70.2
MCE:	3.3
Milk:	16.7
TM:	39.6

BANNERLANE 232 EXTRA GEN 60W
AGA 60W BANNER SPORT ZEAL 28Z
 AGA 705 MISS EASYGOING 905W

C 326N YES I CAN 127Y
AGA 127Y MISS YES MAAM 418B
 AGA 70N MISS BRIT DOM 8W

BBSF 6P SPORT 232S
 BANNERLANE GENSTAR LASS 27R
 CTY EASY 705T
 AGA 114L MISS STAR GENERAL 47S
 BCD 140L DOM LAD 326N
 LONE-PINE ICE QUEEN 55T
 AGA 79H BRIT DOM ET 70N
 AGA 47F MISS DOMINO 15K

Top % of Breed: CE 16%

Handbred: July 7, 2019 - AGA 203Y GREGORY PETE EDGE 49E

Exposed: July 19 - Aug 27, 2019 AGA 203Y GREGORY PETE EDGE 49E

ULRICH HEREFORD RANCH HEIFERS

129



BW:	73
205:	499
'20 EPDs	
CE:	6.2
BW:	2.7
WW:	39.8
YW:	71
MCE:	3.6
Milk:	25
TM:	44.9

AGA 76D MISS DEEP 129F

C03053643 U 129F APRIL 24 2018

GCC PETE 203Y ET
AGA 203Y GREGORY PETE DEEP 76D
 AGA 24W MS GEN WILEY BONNY 99B

AGA 60W BANNER SPORT ZEAL 28Z
AGA 28Z MISS SPORT ZEAL 79D
 CFH 2W LASS 133Y

UPS DOMINO 3027
 LPG STANDARD 44B LASS 50H
 AGA 114L GENERAL WILEY 24W
 AGA 47R MISS BRITISHER 1T

BANNERLANE 232 EXTRA GEN 60W
 AGA 705 MISS EASYGOING 905W
 LPG HERMAN LORD LAD 2W
 CFH 245M SUPER LADY 481P

Top % of Breed: CE 20%, MARB 26%, MCE 29%, FMI 16%

Exposed: June 29 - Aug 28, 2019 - AGA 137A MO LE BRIT CHUCK 110C

141



BW:	73
205:	511
'20 EPDs	
CE:	7.6
BW:	3.4
WW:	46.8
YW:	79.5
MCE:	3.6
Milk:	22.8
TM:	46.2

AGA 76D MISS DEEP 141F

C03053771 U 141F MAY 01 2018

GCC PETE 203Y ET
AGA 203Y GREGORY PETE DEEP 76D
 AGA 24W MS GEN WILEY BONNY 99B

WH 9A RUST TEMPEST 372A
AGA 372A MS RUSTY DOORKNOB 59D
 AGA 109U MISS RIB STANDARD 68Y

UPS DOMINO 3027
 LPG STANDARD 44B LASS 50H
 AGA 114L GENERAL WILEY 24W
 AGA 47R MISS BRITISHER 1T

XTD 6T RUST TEMPEST ET 9A
 WICHMAN LADY 06
 LCI 68R RED STANDARD 109U
 AGA 6N MISS STANDARD 50R

Top % of Breed: CE 13%, MARB 21%, MCE 29%, FMI 11%

AI'd: July 6, 2019 - AGA 20J STANMORE 21M

Exposed: July 24 - Aug 28, 2019 - AGA 125R LAD 48A

712



BW:	88
205:	564
'20 EPDs	
CE:	2.5
BW:	5
WW:	48.1
YW:	76
MCE:	1.4
Milk:	19.4
TM:	43.5

AGA 28Z MISS SPORT ZEAL 712E

C03044544 U 712E SEPTEMBER 23 2017

BANNERLANE 232 EXTRA GEN 60W
AGA 60W BANNER SPORT ZEAL 28Z
 AGA 705 MISS EASYGOING 905W

AGA 4P RIBSTONE 81S
AGA 81S MISS RIBSTONE 18W
 AGA 91L MISS STANDARD 148N

BBSF 6P SPORT 232S
 BANNERLANE GENSTAR LASS 27R
 CTY EASY 705T
 AGA 114L MISS STAR GENERAL 47S

LCI 157K RIBSTONE 4P
 AGA 44K MISS OLD DOMINO 252M
 AGA 191G STANDARD ET 91L
 AGA 44C MISS SILVER 61G

Handbred: July 2, 2019 - AGA 43K STANMORE ELEMENT 47E

Exposed July 19 - Aug 27, 2019 - AGA 43K STANMORE ELEMENT 47E

717



BW:	86
205:	446
'20 EPDs	
CE:	3.2
BW:	3.7
WW:	39.2
YW:	59.6
MCE:	1.5
Milk:	20.6
TM:	40.2

AGA 28Z MISS SPORT ZEAL 717E

C03044549 U 717E SEPTEMBER 28 2017

BANNERLANE 232 EXTRA GEN 60W
AGA 60W BANNER SPORT ZEAL 28Z
 AGA 705 MISS EASYGOING 905W

AGA 46E BRITISHER 32T
AGA 32T MISS BRITISHER 108W
 AGA 21M MISS STANMORE 126T

BBSF 6P SPORT 232S
 BANNERLANE GENSTAR LASS 27R
 CTY EASY 705T
 AGA 114L MISS STAR GENERAL 47S

DP BRITISHER AGA 46E
 AGA 6N MISS STANDARD 50R
 AGA 20J STANMORE 21M
 AGA 656U MISS STANDARD 135J

Handbred: June 19, 2019 - AGA 43K STANMORE ELEMENT 47E

Exposed July 19 - Aug 27, 2019 - AGA 43K STANMORE ELEMENT 47E

DAMS



128A DAM OF 152F



5Y DAM OF 49F



67B DAM WITH 66F CALF



75C DAM OF 1F

WHAT IS AN EPD?

Expected Progeny Differences (EPDs) are genetic predictions producers can use when making selection decisions. These values are available on performance animals from breed associations. It is important to understand you cannot compare EPDs between breeds, only within a breed. A buyer is always advised to use more than just the EPDs regardless of accuracy when making purchase decisions.

An Expected Progeny Difference (EPD) is a measure of the genetic merit of an animal using relevant performance and pedigree information. EPDs are expressed in the units of measure. For example, birth weight is expressed in pounds, and rib-eye area is expressed in square inches.

EPDs come from performance data. Producers submit data on their cattle. From this data, researchers look at the differences between animals raised in the same environment (contemporary groups) and ascertain the portion of that difference that is due to genetics (heritability). Also included in this is how the different traits relate to each other and interact together (correlations). They can then directly compare genetic differences among animals using the pedigree information contained in the CHA and AHA registries. The result is a value that can be directly compared between animals and across environments, an EPD.

EPD'S USED IN THIS CATALOGUE

Calving Ease EPD (CE) - calculated using birth weight and calving ease score information. Calving ease EPDs represent the ease with which progeny of an animal are born to first calf heifers. The EPD is expressed as a percent probability, with a higher value representing calves with a higher probability of being born unassisted.

Birth Weight EPD (BW) - is an indicator of calving ease. Higher birth weight EPDs usually indicates more calving difficulty.

Weaning Weight EPD (WW) - reflects progeny growth differences up to 205-days.

Yearling Weight EPD (YW) - reflects progeny growth differences through to 365-days.

Milk EPD (Milk) - indicates the ability of a sire's daughters to provide their calves with an environment that encourages growth from birth to weaning, through mothering ability and milk production. This EPD is expressed in the expected difference in pounds of calf at weaning.

Total Maternal EPD (TM) - also known as Milk + Growth, this EPD combines the milk EPD plus 1/2 the Weaning Weight EPD. It is expressed in pounds of calf weaned at 205-Days and combines the genetics for pre-weaning growth and the influence of the maternal environment on the weaning weight of the daughter's progeny.

Maternal Calving Ease EPD (MCE) - represents the ease with which a sire's daughters will calve as first calf heifers, when compared to daughters of other sires. The EPD is expressed as a percent probability, with a higher value representing daughters with a higher probability of unassisted calving.

COMPARABILITY OF EPD'S

EPDs from Hereford animals are directly comparable to other Herefords in North America, due to the inclusion of data from Canada and the United States. As well, it is important to remember that Hereford EPDs are NOT directly comparable to EPDs produced by different breeds, such as Angus or Simmental.

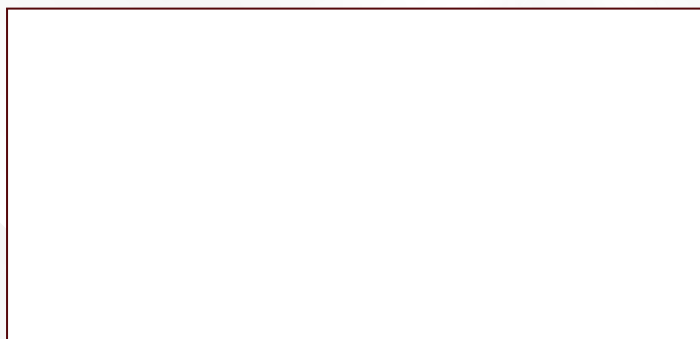
All EPD's were quoted at time of writing, and weekly runs may have altered these numbers over time.

ULRICH HEREFORD RANCH INC.

BOX 843, CLARESHOLM, AB T0L 0T0



RETURN POSTAGE GUARANTEED
PORT DE RETOUR GARANTI



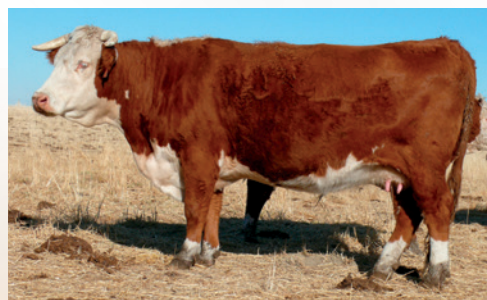
40T DAM OF 8F



18B DAM OF 26F



3Y DAM OF 73F



19Y DAM OF 20F



129X DAM OF 36F



316A DAM OF 101F

www.ulrichherefords.com