

52 Registered 2 Year Old & Long Yearling Bulls

Specializing in **LIGHT BIRTHWEIGHTS**
with **GREAT PERFORMANCE**
plus **REMARKABLE COWS**



10TH ANNUAL
ULRICH
HEREFORDS
Bull Sale



2016 TUESDAY 1:00PM MST
FEBRUARY 23 BALOG AUCTION
LETHBRIDGE

ULRICH HEREFORD RANCH INC.

Peter Ulrich 403-625-1036 Hans & Annette Ulrich 403-625-2237 Email peter@ulrichherefords.com

www.ulrichherefords.com

ULRICH HEREFORD RANCH REFERENCE SIRES



AGA 13G GENERAL 114L

Reference Sire C



AGA 114L GENERAL WILEY 24W

Reference Sire H



AGA 114L GENERAL 105T

Reference Sire F

Pictured as coming 2 yr old



AGA 705 EASYGOING EXPRESS 67X

Reference Sire I

Pictured as coming 2 yr old



CTY EASY 705T

Reference Sire G



AGA 77J SUPERMAN 48Y

Reference Sire J

Pictured as coming 2 yr old



10th Annual
ULRICH HEREFORDS
BULL SALE

FEBRUARY
23

52 HEAD ON OFFER!

52 Coming Two & Long Yearling Hereford Bulls

BALOG AUCTION • LETHBRIDGE, ALBERTA

Sale Time: 1:00 pm (MST) Join us for Lunch: 11:30 a.m.

SALE DAY PHONES:

Balog Auction - 403-320-1980

Peter's Cell - 403-625-1036 Hans Cell - 403-625-6629

SALE STAFF:

Bob Balog..... Auctioneer..... 403-320-1980
Brad Dubeau..... Ring Staff..... 403-512-2235
Louis Balog..... Ring Staff..... 403-320-1980
Lander Nicodemus..... Ring Staff..... 307-421-8141

ACCOMMODATIONS:

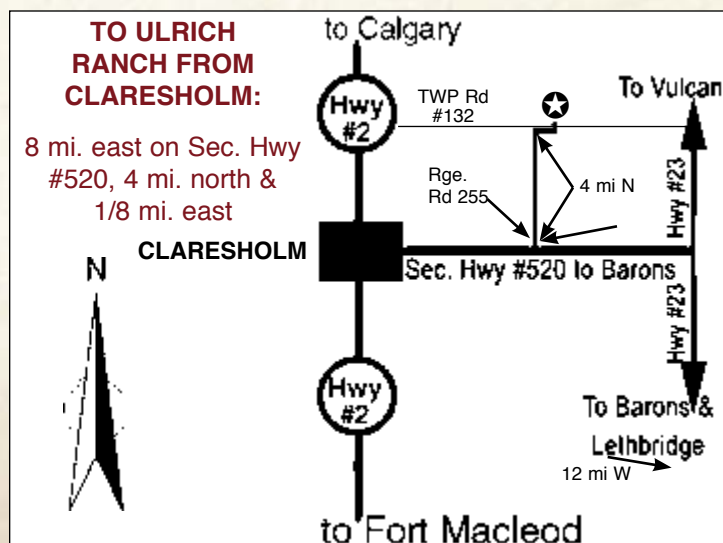
Ramada Inn..... 403-380-5050
2375 Mayor Magrath Drive S. - mention Balog Auction for special room rate

VIEWING THE BULLS:

We welcome you to stop by the ranch any time prior to Sale Day to view our operation and see the bulls.

PLEASE JOIN US EARLY SALE DAY:

For presale viewing followed by lunch at 11:30 a.m.



ULRICH HEREFORD RANCH INC.

Box 843, Claresholm, AB T0L 0T0

Peter Ulrich - Cell: 403-625-1036

Phone: 403-625-2434

Email: peter@ulrichherefords.com

Hans & Annette Ulrich - Ph: 403-625-2237

Can't make it to the sale?
Internet Bidding Available.

To view this sale visit www.dlms.ca, Fill out the registration form located under registration and sign-up for your free user account and select a username and password.

BIDDERS - To be approved as a bidder, Log in to dlms.ca and click BUYER APPROVAL tab, select the sale you are interested in bidding at and click sign up.

For more information

Call DLMS Reps:

Whitney Bosovich 780.991-3025

Mark Shologan 780.699.5082

DLMS
www.dlms.ca

SPECIAL POINTS TO NOTE:

- **No bulls sell at Calgary or Medicine Hat - All of our best are in this sale!**
- All bulls are semen tested before sale
- **Credit of \$100** per bull to purchasers who take bulls from the sale.
- **Delivery:** Delivery to central points in Alberta at seller's convenience. Out of province purchases delivered by commercial hauler at shared cost.
- We strongly recommend that bulls be insured - an insurance agent will be available at the sale.
- **Flying In?** If flying into the Lethbridge Airport, call Balog Auction for pick-up: 1-403-320-1980.
- **Ultrasound Information** has been collected on these bulls as yearlings and will be available sale day or can be obtained prior to the sale by calling Peter at 403-625-1036. **Complete EPDs** (beyond those shown in this catalogue) are also available.
- **Sight Unseen Purchase Plan:** If you are unable to attend the sale, please contact us or any of the sale staff with instructions to purchase on your behalf.

WELCOME to —

ULRICH HEREFORD RANCH

10TH ANNUAL BULL SALE



Peter Ulrich

Cell: 403-625-1036



**Hans & Annette
Ulrich**

PH: 403-625- 2237

It's incredible to think that this is now our 10th Annual Bull Sale. Regardless of the highs & lows, it's always great to be in the cattle business. We thank God for the privilege and the health & strength to continue!

2015 proved to be a poor year for grass in southern Alberta. The rains just didn't come at the right time. We managed to roll up some green feed to add to the silage supply and it helps that we have, once again, put in a significant number of yearling bulls in the CHA's RFI Trial at Olds and Cattleland (Strathmore).

Despite the feed situation, the coming two-year-old bulls are looking good. It's been a wonderful fall, and the winter hasn't (yet) hit those bone-chilling temperatures. The breeding bulls and mother cows used in our "Specializing in Light Birthweights with Great Performance, plus Remarkable Cows" program are doing their job, and we are confident these sale bulls will continue to do the same for you!

You'll see us refer to the new Feed Efficiency EPDs on some of our sale bulls, as many of them have been through the Canadian Hereford Association's Feed Efficiency trial which determines the amount of feed actually consumed by each individual using GrowSafe bunks and calculating the results as two different EPDs, RFI and RIG. "RFI refers to Residual Feed Intake ...and identifies animals with lower maintenance requirements. Like a golf score negative is good, however this must be accompanied

by adequate growth and a balance of other traits. RIG refers to residual intake and gain... to identify animals with superior metabolic efficiency and superior growth efficiency." The ultimate goal is to make even more feed efficient cattle, thus enabling all cattlemen to reduce feed costs. We've been pleased that the vast majority of our test bulls have tested above average!

We haven't changed our feed regimen. These 44 comin' 2-yr-olds, and 8 long yearlings offered on Feb 23rd are raised on milk & grass here - au naturel! You won't find any creep feeders on our pastures - these cattle have to work on their own genetic merits! The yearlings spend all summer on grass, and then in fall the bulls are fed a high roughage diet consisting of hay, barley silage and Landmark Feed's "Bull's Eye" backgrounding pellets, designed for growing animals. We have chosen to follow a non-medicated program, to grow out, not push these youngsters - preparing them for their real work in the spring.

We made the 5-Star status again at the CHA this year, by faithfully reporting performance data and ultrasound. It's unfortunate that some of the EPDs seem to frown on our choice to cross working bulls from the old days with the improved genetics of today, but we believe this makes even better animals with longevity, hardiness & femininity. Check out Lots 108B & 95B.

Please note that the EPDs here are the most current available at time of printing. However, the CHA is doing 6 EPD runs in 2016, instead of the normal 2, so this means that new EPDs will be released mid-Feb and may differ from those published in this catalogue. All bulls are semen tested and those results along with scrotal measurements will be available on sale day.

Once again, we look forward to seeing you on Sale Day and catching up with old friends and colleagues, as well as meeting new ones as the Hereford business begins to gain popularity again! We appreciate your support!

Sincerely,

Peter Ulrich and Hans & Annette Ulrich

TERMS & CONDITIONS

TERMS - The terms of the sale are cash or cheque payable at par at Lethbridge, AB, on Sale Day. The right of property shall not pass until settlement is made. All settlements must be made with the clerks of the sale before any cattle will be released. For US export, USDA and individual state rules will apply.

BIDS - Every animal entering the sale ring will be sold to the highest bidder. A floor price will apply to each animal consigned.

DISPUTES - In case of disputes, bidding will be reopened between the parties involved. If no further bid is made, the buyer will be the person from whom the auctioneer accepted the last bid. The auctioneer's decision in such matters will be final.

PURCHASER'S RISK - Each animal becomes the risk of the purchaser as soon as sold.

ANNOUNCEMENTS - Errors discovered in the catalogue will be corrected by announcements from the Auction Stand at sale time and such corrections will take precedence over the printed matter in the catalogue.

CERTIFICATE OF REGISTRY - A certificate of registry duly transferred will be furnished to the buyer for each animal after settlement is made.

SHIPPING - Assistance will be given in making shipment after the sale, but no risk is assumed by Balog Auction, or the seller. **Delivery to central points in Alberta will be made at seller's convenience. Out-of-province purchases will be delivered by commercial hauler at shared cost.** Any additional expenses are the responsibility of the buyer, including duty, brokerage fees, etc.

BREEDER'S GUARANTEE - The consignors have done everything possible to assure you, the buyer, that every bull in this sale will be a breeder. A certified veterinarian has semen tested and physically evaluated every bull. However, should a problem arise, please inform the seller so further arrangements may be made.

ACCIDENTS - Although every precaution will be taken to protect the safety and comfort of buyers, neither the sales manager, auctioneer nor any owner assumes any responsibility in this matter and disclaims any liability, legal or otherwise, in the event of accident or loss of property.

LIABILITY - Balog Auction is acting as agent only and assumes no responsibility for representations made by the seller. Purchasers must look to the seller for fulfillment of all guarantees and representations made hereunder.

SPECIAL POINTS to REMEMBER:

- No creep feed
- No hormones or medicated feed!
- Backgrounded, not pushed!

KEY TO PERFORMANCE TERMS USED HEREIN:

BW: Actual Birth Weight in Pounds

205: Weaning Weight in lbs adjusted to 205 Days

365: Yearling Weight in lbs adjusted to 365 Days

PLEASE NOTE

Pictures of the dams of many of the sale bulls, as well as updated sale information and a downloadable version of this catalogue in full color is available at our website:

www.ulrichherefords.com

ULRICH HEREFORD RANCH REFERENCE SIREs

A

AGA 55C STANDARD 18Y

C02401126 XUB 18Y FEBRUARY 02 1989

BW:	93
205:	707
365:	1108
'16 EPDs	
CE:	+2.2
BW:	+3.4
WW:	+22.9
YW:	+36.2
MCE:	+1.1
Milk:	+8.2
TM:	+19.7

STANDARD INTENSE 36T
SILVER STANDARD 55C
 VERN LADY 4X
 DP BRITISHER AGA 46E
MISS 46E BRITISHER AGA 22L
 PINE COULEE MISCHIEF LADY 397

RUSTICANA STANDARD DOMINO 52N
 BLANCHE INTENSE
 ATOMDALE VERN LAD 41U
 SILVER STANDARD LASS 15V
 DOMINO STANDARD DP LAD 45
 BRITISHER WETMORE LADY AGA 5A
 WABASH BRITISHER 2L
 BANGLETTE 92

XUB 18Y (born 1989), was sired by 55C, Jim Hole's legend. He had the great curly haircoat, solid feet, great heel, solid bones, lead weight, thickness, a wide wide top, a small head & the handsome factor we seek today! His dam, an elite cow, from generations of flat udders and small well-placed teats, & her dam were ideal cattle ahead of their day! XUB 18Y may be old, but still powerful, correct & meaty! He competes today even in marbling: 2 female avg MARB indx: 168, & a son 121 index. RFI ranks right up there too: 161/1477

Lot 41B

B

AGA 22B BRIGADER 53L

C02795500 ALNK 53L FEBRUARY 15 2001

BW:	108
205:	785
365:	1286
'16 EPDs	
CE:	+0.0
BW:	+5.2
WW:	+39.7
YW:	+75.1
MCE:	+0.5
Milk:	+19.1
TM:	+39.0

BAR PIPE BRIGADIER 19Y
CTY BRIGADER 22B
 LADY 66J B DOM 509
 AGA 28Z DOMINO 189C
AGA 189C MISS DOMINO 4E
 AGA 852 MISS STANMORE ET 5C

BP RED STANDARD 37W
 BP MISS EXTRA 205W
 BELL L 85B DOMINO 66J
 MISS ARDMORE 6209
 LLL 30W DOM STANDARD 28Z
 MISS 4S STANDARD AGA 9U
 CTY K STANMORE X852
 MISS 51K BRITISHER AGA 61N

53L was Grand Champion at the 2003 Medicine Hat Bull Sale. He sold to Gary Hoffman in the States, but the border closing (BSE) granted us the wonderful opportunity to use him ourselves and draw some semen before he was sold to Hollywood Herefords in Regina, SK. His offspring have lots of pigment and good thickness. His daughters provide plenty of rich milk from excellent udders, and are easy keeping.

Lots 10B, 36B, & 77B

C

AGA 13G GENERAL 114L

C02795506 ALNK 114L FEBRUARY 22 2001

BW:	94
205:	687
365:	1207
'16 EPDs	
CE:	-5.1
BW:	+7.3
WW:	+43.6
YW:	+79.6
MCE:	+1.2
Milk:	+20.7
TM:	+42.5

GENERATOR STANDARD 10A
GEM GENERAL 13G
 AD 75N LASS 31W
 STANDRD LAD 656 4ET
AGA 656U MISS STANDARD ET 17H
 AGA MISS 80S VOLTAGE ET 14X

SNS GENERATOR 28X
 MISS 417 STAN SUPERB 7Y
 MF STANDARD LAD 75N
 COMMANDER LASS 14T
 HI STANDARD LAD 20P
 BELL L 60H DOMINO LASS 82K
 LCI ET HIGH VOLTAGE 80S
 MISS 51K BRITISHER AGA 61N

Our favourite bull was named the Southern Alberta Bull Spectacular "People's Choice" winner in '02. His progeny have also won the same award & other honours. 114L's dam was a "Dam of Distinction" out of a "Dam of Great Distinction" out of our great foundation cow, 61N! And note 114L's females - incredible, plus femininity with thickness, volume, sound feet & easy keeping. Stunning good looks plus heavy WN & YR weights keeps 114L on top. *Pictured inside cover.*

Lot 148B

E

96 ANDY 72S

C02887424 CHB 72S APRIL 16 2006

BW:	96
205:	865
365:	
'16 EPDs	
CE:	-0.3
BW:	+3.6
WW:	+51.2
YW:	+70.2
MCE:	-1.6
Milk:	+17.8
TM:	+43.4

96 ANDY 81F
96 ANDY 7L
 96 HANNA 9J
 DUNN'S 02C LAD 14E
96 EVE 18N
 96 LADY 56E

96 STANDARD ADVANCE 81N
 96 LADY 48D
 HH HOME BUILDER 603
 96 STANDARD LASS 24E
 DUNN'S 10Y LAD 02C
 DUNN'S SPARTAN LADY 28C
 96 LANDMARK 50A
 96 PRISCILLA ET 10B

We purchased some 96 ANDY 72S semen from Bert Anderson of Sceptre, SK but unfortunately the bull died before we could picture him. We did see most of his daughters and they are terrific cows. His progeny are born with moderate birthweights - all unassisted! The bulls are uniform and powerfully built.

Lots 11B, 48B, 53B, & 59B

F

AGA 114L GENERAL 105T

C02903274 ALNK 105T MARCH 30 2007

BW:	104
205:	658
365:	997
'16 EPDs	
CE:	-4.7
BW:	+9.2
WW:	+51.8
YW:	+87.0
MCE:	+1.0
Milk:	+14.0
TM:	+39.9

GEM GENERAL 13G
AGA 13G GENERAL 114L
 AGA 656U MISS STANDARD ET 17H
 AGA 4016D STANMORE 4K
AGA 4K MISS STANMORE 221N
 AGA 44C MISS SILVER 85G

GENERATOR STANDARD 10A
 AD 75N LASS 31W
 STANDRD LAD 656 4ET
 AGA MISS 80S VOLTAGE ET 14X
 CTY K STANMORE 4016D
 AGA 67Z MISS CENTENNIAL 52D
 SNS SILVER PRINCE 44C
 AGA 67Z MISS CENTENNIAL ET 18D

A son of the great 114L, 105T is a handsome fellow, not just in his structure and muscling (lots of muscle and meat over the top, wide in the pins, muscle down the quarters and pants that bulge) but also holds a beautiful yet masculine head. Great length, yellow haircoat, deep ribs with extra eye-appeal and pigmentation all add up to make him really special. 105T comes from a beautiful mother of thick mossy long hair and a flat udder with teats small and set well apart and in every corner. *Pictured inside cover.*

Lot 20B

G

CTY EASY 705T

C02937185 705 APRIL 09 2007

BW:	
205:	
365:	
'16 EPDs	
CE:	+2.4
BW:	+4.5
WW:	+39.4
YW:	+62.5
MCE:	+0.1
Milk:	+17.2
TM:	+36.9

SJSL HI 20 STAND LAD 10S
AGA 10S STANDARD 137Y
 GU MISS 46E BRITISHER 10K
 SNS SUPER SILVER 35D
COURTNEY LASS J921
 COURTNEY LASS E522

HI STANDARD LAD 20P
 STANDARD L1 LASS 10G
 DP BRITISHER AGA 46E
 GU MISS 50Y 97F
 SNS SILVER PRAIRIE 50B
 SNS 112N SUPER GIRL 26Y
 LCI YOUNG RANGER 91B
 COURTNEY LASS C322

705 has left us very impressive offspring. His sire, 137Y, was raised on our ranch & is now an AHA trait leader for Calving Ease, BW, Milk, MCW, & CEZ Indx. 137Y bred cows well into his teen years and his daughters and grand-daughters are producing exceptionally well (just give us a call). 705 continued that reputation for us (heifers calve EASY), his last two sons are offered in this sale. *Pictured inside cover.*

Lots 57B & 150B

D

AGA 53A STANDARD ET 4R

C02865134 ALNK 4R FEBRUARY 09 2005

BW:	75
205:	655
365:	1068
'16 EPDs	
CE:	+1.4
BW:	+4.5
WW:	+46.8
YW:	+74.9
MCE:	-3.8
Milk:	+11.9
TM:	+35.3

STANDARD K LAD 14X
SGC 14X STANDARD LAD 53A
 SGC BRIT STANDARD LASS 1U
 CTY BRIGADER 22B
AGA 22B MISS BRIGADER 511E
 AGA MISS 42X STANMORE 94Z

K 53M STD DOMINO 140R
 STANDARD ZENTO LASS 40R
 CRM 25N MO LE STANDARD 305R
 SHADY CREEK BRIT TONE LASS 31P
 BAR PIPE BRIGADIER 19Y
 LADY 66J B DOM 509
 AGA 30S STANMORE 42X
 JRC 31R LASS 37U

Thick & meaty, sound & long, proud & handsome with a wide top, this bull has it all – both performance and easy calving. After drawing semen, 4R was sold to Gordon Henderson, a real cattleman, and then Carlrans Ranching used him. We have a few females from 4R and they have all been outstanding! 4R is sired by 53A (straight Canadian pedigree that provided thickness and improved udders tremendously) and is graced by the great 511E mother along the bottom side.

Lot 81B

H

AGA 114L GENERAL WILEY 24W

C02931573 ALNK 24W MARCH 11 2009

BW:	70
205:	714
365:	1081
'16 EPDs	
CE:	+0.6
BW:	+1.2
WW:	+29.4
YW:	+54.0
MCE:	+2.8
Milk:	+24.2
TM:	+38.9

GEM GENERAL 13G
AGA 13G GENERAL 114L
 AGA 656U MISS STANDARD ET 17H
 AGA 85J STANDARD 118L
AGA 118L MISS STANDARD 2R
 AGA 97J MISS RED EXTRA 203N

GENERATOR STANDARD 10A
 AD 75N LASS 31W
 STANDRD LAD 656 4ET
 AGA MISS 80S VOLTAGE ET 14X
 AGA 191G STANDARD 85J
 AGA 40Y MISS BRITISHER 168F
 AGA 22B BRIGADER 97J
 AGA 15H MISS BRITISHER 106L

Wiley has excellent Calving Ease & light Birthweight genetics! Offspring are vigorous at birth, thick, compact & well-marked with excellent pigment. A strong maternal factor is evidenced by his own fantastic feminine mother's (2R) super, flat, tight udder and small teats on each corner. Her consistent calves' avg'd 76 lb BWs yet above avg weaning wts. And don't miss 24W's MARB EPD of 0.31, (2014-born progeny avg'd 139 MARB index), and **Trait Leader +1.2**

BW and +2.5 Stayability EPDs! Pictured inside cover.

Lots 37B, 40B, 82B, 98B, & 108B

ULRICH HEREFORD RANCH REFERENCE SIREs

AGA 705 EASYGOING EXPRESS 67X

C02945701 ALNK 67X MARCH 20 2010

BW:	89
205:	706
365:	1032
'16 EPDs	
CE:	+2.2
BW:	+2.7
WW:	+40.0
YW:	+58.5
MCE:	+1.1
Milk:	+21.9
TM:	+41.9

AGA 10S STANDARD 137Y
CTY EASY 705T
COURTNEY LASS J921

AGA 20J STANMORE 21M
AGA 21M MISS STANMORE 22T
AGA 207N MISS SILVER 9R

SJSL HI 20 STAND LAD 10S
GU MISS 46E BRITISHER 10K
SNS SUPER SILVER 35D
COURTNEY LASS E522
AGA 121G STANMORE 20J
AGA 5C MISS ENERLAD 68K
AGA 35J SILVER PRIDE 207N
AGA 53A MISS STANDARD ET 152M

Goggle-eyed, & red to the toes with pigmented feet, this was a stout son of 705! Extra thick in his butt and over the top, he was an impressive bull. He held his head up, bright & alert but was calm as a house kitten. Great doing ability was evident, and great carcass numbers concurred (3rd in Ribeye, and 128 index Marb)! The dam brought 21M light birthweight genetics and provided rich, rich milk from a great udder. 67X is also co-owned with Bert Anderson. *Pictured inside cover.*

Lots 1B, 3B, 66B, & 83B

AGA 77J SUPERMAN 48Y

C02958839 ALNK 48Y MARCH 17 2011

BW:	86
205:	701
365:	1018
'16 EPDs	
CE:	+0.0
BW:	+3.4
WW:	+53.4
YW:	+76.6
MCE:	+2.6
Milk:	+20.4
TM:	+47.1

FE 07Y SUPER 129D
CC 129D SUPERMAN 77J
CC 42W JULIANA 66Z

AGA 20J STANMORE 21M
AGA 21M MISS STANMORE 88S
AGA 656U MISS STANDARD ET 75F

JDA 15W SKYWALKER 07Y
FE 412 DANDY 56X
DMF 81N STANDARD 42W
CC ARROW BRITISHER LASS 47T
AGA 121G STANMORE 20J
AGA 5C MISS ENERLAD 68K
STANDRD LAD 656 4ET
AGA 852 MISS STANMORE 22C

86 lb BW, 112 WN indx, 110 YR indx, MARB #1, & 107 REA index, overlaid with well-marked depth of body, wide loin, thick quarters and smooth overall and you've got 48Y. "Mom" is a yellow 21M daughter, moderate sized, with a level bag & small well-placed teats. Superman 77J was a great AI sire, and a son, 26T, (used nat), left us high performance sons with pigment & the heifers make great cows.

Curverbender/Heifer bull. *Pictured inside cover.*

Lot 28B

YV 915W MR RISING STAR 94Y

C02960343 YV 94Y JUNE 07 2011

BW:	98
205:	599
365:	1129
'16 EPDs	
CE:	-3.0
BW:	+7.9
WW:	+59.3
YW:	+84.7
MCE:	-2.8
Milk:	+12.0
TM:	+41.7

SNS 109L SILVER STONE 81N
YV STAR STRUCK 915W
AGA 72M MISS SUNSHINE LAD 282P

STR STD 87D DOMINO LAD 67F
SNS 67F SILVER SKY LADY 107H
SNS 50B SILVER LADY 75E

K 64H RIBSTONE LAD 109L
SNS 67F SILVER SKY LADY 107H
XTC 38J SUNSHINE LAD 72M
AGA 191G MISS STANDARD ET 147L
MVF 656 65U STD DOMINO LAD 87D
LO 400S BRIT DOM LASS 23Y
SNS SILVER PRAIRIE 50B
K 84W RED LADY 135Z

Rising Star 94Y was purchased as a 2-yr-old at Med Hat Bull Sale. He's a nice combination of sire 915W (who had consistently sired a good set of calves with muscle & thickness) & the dam, 107H (correct conformation, femininity, better udder & teats, richer milk). 94Y had the same great ability to sire a uniform, stout, & correct set of progeny! Any one of these solid powerful bulls is just like the other. *Pictured inside backcover.* Unfortunately, we lost 94Y that fall, so this is your only chance to catch one of these Stars:

Lots 73B, 95B, 100B, 102B, 103B, 113B, 127B, 133B, 137B, & 116B

C 326N YES I CAN 127Y

C02955238 C 127Y JANUARY 11 2011

BW:	92
205:	792
365:	1181
'16 EPDs	
CE:	-3.3
BW:	+5.7
WW:	+54.7
YW:	+82.5
MCE:	+1.3
Milk:	+11.6
TM:	+39.0

BP ROBIN HOOD 140L
BCD 140L DOM LAD 326N
BP 146D LADY 30L

LRD LIBERTY PRINCE 24M
LONE-PINE ICE QUEEN 55T
MHF 9322 ICICLES 16M

HR ROBIN HOOD ET 300H
BP LADY MASTERPIECE 293C
BP SANDMAN 146D
BP DIAMOND LADY 79G
LRD FREEDOM ET 66K
LRD MISS LAREDO 28H
MHF F12 ICE 21K
LCE Z32 LIZA ET 78K

Yes 127Y has extra length and thickness, bone and muscle and his offspring carry enormous depth of rib and great quarter that is so necessary in today's beef industry. *Pictured inside backcover.*

Lots 401B, 407B, 413B, & 415B

M

GCC PETE 203Y ET

C02978686 203Y FEBRUARY 03 2011

BW:	
205:	
365:	
'16 EPDs	
CE:	+6.9
BW:	-2.8
WW:	+38.0
YW:	+71.7
MCE:	+5.8
Milk:	+33.2
TM:	+52.2

CL 1 DOMINO 9126J 1ET
UPS DOMINO 3027
UPS MISS DIAMOND 1353

96 STANDARD 6A 25E
LPG STANDARD 44B LASS 50H
LPG COMMANDER 8080 LASS 59D

HH ADVANCE 767G 1ET
CL 1 DOMINETTE 490
SH DIAMOND 881
UPS MS MILEHIGH 8330
BP BRIGADIER 42B
96 SANDY ET 6A
LPG COMMANDER 44B
LPG 8080 LASS 21A

Stout, stout & stout stacked on top of Calving Ease - see Pete's +6.9 CE and **Trait Leading -2.8 BW, +1.8 Stayability EPDs**, plus plenty of marbling thrown in for good measure (+0.16 MARB EPD). A look at Birth Averages over his 3 calf crops shows 34 males born averaging 77 lbs, and 38 females born averaging 71 lbs (overall avg 74 lbs). All these youngsters display that vigour that Pete stamps on newborn calves! *Pictured inside backcover.*

Lots 43B, 72B, 129B, 139B, & 412B

N

AGA 18Y ZOOM STANDARD 18Z

C02969377 ALNK 18Z MARCH 13 2012

BW:	94
205:	758
365:	1112
'16 EPDs	
CE:	+0.2
BW:	+5.4
WW:	+52.3
YW:	+76.2
MCE:	+1.3
Milk:	+19.0
TM:	+45.2

SILVER STANDARD 55C
AGA 55C STANDARD 18Y
MISS 46E BRITISHER AGA 22L

AGA 20J STANMORE 21M
AGA 21M MISS STANMORE 76S
AGA 101J MISS STANDARD 140P

STANDARD INTENSE 36T
VERN LADY 4X
DP BRITISHER AGA 46E
PINE COULEE MISCHIEF LADY 397
AGA 121G STANMORE 20J
AGA 5C MISS ENERLAD 68K
AGA 656U STANDARD ET 101J
AGA 22B MISS BRIGADER 51E

Zoom 18Z exudes performance, eye-appeal, growth, length, depth & great markings. He exhibits the thickness & capacity of the old, along with the femininity, udders & feet of the new! 94 lb BW, 758 lbs 205-day wt (116 indx), 1112 365-day wt (110 indx), REA 1.09/100 lbs. Dam 76S's pedigree has generations of great cattle. BW: 4 sons avg'd 88 lbs, 4 heifers avg'd 83 lbs; WN: 3 sons avg'd 108 indx, 4 heifers avg'd 113.8 indx; YR: sons avg'd 104.3 indx & heifers avg'd 109 indx. 76S/18Z snagged praises of many WHC goers in 2012. *Pictured inside backcover.*

Lots 12B & 105B

O

AGA 60W BANNER SPORT ZEAL 28Z

C02971712 ALNK 28Z MARCH 16 2012

BW:	86
205:	717
365:	950
'16 EPDs	
CE:	+0.4
BW:	+3.9
WW:	+38.0
YW:	+61.6
MCE:	-0.2
Milk:	+21.1
TM:	+40.1

BBSF 6P SPORT 232S
BANNERLANE 232 EXTRA GEN 60W
BANNERLANE GENSTAR LASS 27R

CTY EASY 705T
AGA 705 MISS EASYGOING 905W
AGA 114L MISS STAR GENERAL 47S

HAWKEYE 75K SKY LAD 6P
BBSF 18H EXTRA LASS 237M
C 80G L SARGENT 78K
BANNERLANE STAN LASS 39M
AGA 10S STANDARD 137Y
COURTNEY LASS J921
AGA 13G GENERAL 114L
AGA 22B MISS BRIGADER 51E

Zoom 18Z exudes performance, eye-appeal, growth, length, depth & great markings. He exhibits the thickness & capacity of the old, along with the femininity, udders & feet of the new! 94 lb BW, 758 lbs 205-day wt (116 indx), 1112 365-day wt (110 indx), REA 1.09/100 lbs. Dam 76S's pedigree has generations of great cattle. BW: 4 sons avg'd 88 lbs, 4 heifers avg'd 83 lbs; WN: 3 sons avg'd 108 indx, 4 heifers avg'd 113.8 indx; YR: sons avg'd 104.3 indx & heifers avg'd 109 indx. 76S/18Z snagged praises of many WHC goers in 2012. *Pictured inside backcover.*

Lots 12B & 105B



ALNK 40T Dam of Lots 1B & 3B

ULRICH HEREFORD RANCH REFERENCE SIREs

P

AGA 26R WHAM HAMMER 87W

C02933144 ALNK 87W APRIL 06 2009

BW:	86
205:	671
365:	1077
'16 EPDs	
CE:	+0.6
BW:	+2.1
WW:	+23.9
YW:	+49.2
MCE:	-0.1
Milk:	+12.3
TM:	+24.3

DIAMOND-T 25J LAD 5L
LFF 5L JACK HAMMER 26R
LFF 3B HI LITE EXTRA LASS 11E

AGA 1S OLD DOMINO 44K
AGA 44K MISS OLD DOMINO 252M
AGA 102E MISS EXTRA 190K

DIAMOND-T 127C LAD 25J
DIAMOND-T DOM BRIT 5E
SJSI HI LITE SUPER LAD 3B
LFF 16Z EXTRA LASS 3C
HU WETMORE DOMINO 1S
AGA 656U MISS STANDARD ET 17H
FE 27A EXTRA 102E
AGA 189C MISS DOMINO 22F

What can he do? Produce thick meaty bulls with pants & wide tops and moderate-sized heifers, deep, sound & easy keeping with great udders. Why? 87W himself has a moderate birthweight, outstanding natural thickness, depth and length, good feet, quarters, & pants, performance, RibEye, Marbling and can pass it on! He multiplies the best attributes of his sire Jack Hammer 26R and his Old Domino 252M dam to produce beef-makers on both sides of a pedigree! *Pictured inside backcover.*
Lots 75B & 151B

Q

BANNERLANE 232 EXTRA GEN 60W

C02933072 ARNL 60W APRIL 02 2009

BW:	86
205:	
365:	
'16 EPDs	
CE:	-0.2
BW:	+3.4
WW:	+41.6
YW:	+65.7
MCE:	+0.0
Milk:	+17.0
TM:	+37.8

HAWKEYE 75K SKY LAD 6P
BBSF 6P SPORT 232S
BBSF 18H EXTRA LASS 237M

C 80G L SARGENT 78K
BANNERLANE GENSTAR LASS 27R
BANNERLANE STAN LASS 39M

SNS 67F SKY LAD 75K
VEDAN 106G SUPER LASS 119L
LPG EXTRA LAD 18H {CHB,SOD}
BP STAR LADY 132E
C 18C GENERAL D LAD 80G
BAR-N COUNTESS ET 614F
BANNERLANE 18C STD LAD 95G
BANNERLANE VIRGINIA 32D

Sired by Sport 232S, a great bull from the Bannermans, this 60W has left us some impressive offspring that have excelled with deep & natural thickness, extra wide tops and responsible birthweights accompanied by quick vigour and immediate growth. The pounds go on – the performance is there! We used one of his sons with plenty of pigment, Zeal 28Z, in our own herd. Yes, 60W sets the bar extremely high for progeny of both sexes!
Lots 419B, 422B, & 423B

• BALOG AUCTION SERVICES INC. •

PO Box 786, Lethbridge, Alberta, T1J 3Z6
Phone (403) 320-1980 Fax (403) 320-2660

Friends and Fellow Cattlemen,

Welcome one and all to the Peter Ulrich Production Sale for 2016!

Once again it is a privilege to sell a tremendous offering of high quality performance cattle.

The Ulrich herd is the pioneer herd in performance testing in the Nation. Careful selection with a strong emphasis on maternal, calving & milk traits, have been the basis of development.

Peter has a very powerful set of bulls for your selection. Take advantage and move your program to a higher bracket.

Take home a bull that will make a difference - Peter has the goods.

Respectfully



R.C. (Bob) Balog

WHAT IS AN EPD?

Expected Progeny Differences (EPDs) are genetic predictions producers can use when making selection decisions. These values are available on performance animals from breed associations. *It is important to understand you cannot compare EPDs between breeds, only within a breed.* A buyer is always advised to use more than just the EPDs regardless of accuracy when making purchase decisions.

An Expected Progeny Difference (EPD) is a measure of the genetic merit of an animal using relevant performance and pedigree information. EPDs are expressed in the units of measure. For example, birth weight is expressed in pounds, and rib-eye area is expressed in square inches.

EPDs come from performance data. Producers submit data on their cattle. From this data, researchers look at the differences between animals raised in the same environment (contemporary groups) and ascertain the portion of that difference that is due to genetics (heritability). Also included in this is how the different traits relate to each other and interact together (correlations). They can then directly compare genetic differences among animals using the pedigree information contained in the CHA and AHA registries. The result is a value that can be directly compared between animals and across environments, an EPD.

EPD'S USED IN THIS CATALOGUE

Calving Ease EPD (CE) - calculated using birth weight and calving ease score information. Calving ease EPDs represent the ease with which progeny of an animal are born to first calf heifers. The EPD is expressed as a percent probability, with a higher value representing calves with a higher probability of being born unassisted.

Birth Weight EPD (BW) - is an indicator of calving ease. Higher birth weight EPDs usually indicates more calving difficulty.

Weaning Weight EPD (WW) - reflects progeny growth differences up to 205-days.

Yearling Weight EPD (YW) - reflects progeny growth differences through to 365-days.

Milk EPD (Milk) - indicates the ability of a sire's daughters to provide their calves with an environment that encourages growth from birth to weaning, through mothering ability and milk production. This EPD is expressed in the expected difference in pounds of calf at weaning.

Total Maternal EPD (TM) - also known as Milk + Growth, this EPD combines the milk EPD plus 1/2 the Weaning Weight EPD. It is expressed in pounds of calf weaned at 205-Days and combines the genetics for pre-weaning growth and the influence of the maternal environment on the weaning weight of the daughter's progeny.

Maternal Calving Ease EPD (MCE) - represents the ease with which a sire's daughters will calve as first calf heifers, when compared to daughters of other sires. The EPD is expressed as a percent probability, with a higher value representing daughters with a higher probability of unassisted calving.

(important to understand is that zero is not "average")

COMPARABILITY OF EPD'S

Hereford Breed Averages EPDs for Calves born from 2014 to 2015	CE	BW	WW	YW	MCE	Milk	TM
	1.2	3.2	49.0	79.0	1.4	21.0	45.0

EPDs from Hereford animals are directly comparable to other Herefords in North America and parts of South America, due to the inclusion of data from Canada, United States, Uruguay & Argentina. As well, it is important to remember that Hereford EPDs are NOT directly comparable to EPDs produced by different breeds, such as Angus or Simmental.



Catalogue Design by
Coyote Publishing
Ph: 403.394.4481
www.coyotepub.com

ULRICH HEREFORD RANCH COMING 2'S



1

AGA 67X BRAVO EXPRESS ET 1B

C03003619 ALNK 1B MARCH 08 2014

BW:	76
205:	599
'16 EPDs	
CE:	+2.4
BW:	+1.7
WW:	+35.4
YW:	+54.2
MCE:	+0.1
Milk:	+20.3
TM:	+38.0

CTY EASY 705T
AGA 705 EASYGOING EXPRESS 67X
AGA 21M MISS STANMORE 22T

AGA 10S STANDARD 137Y
COURTNEY LASS J921
AGA 20J STANMORE 21M
AGA 207N MISS SILVER 9R

DP BRITISHER AGA 46E
AGA 46E MISS BRITISHER 40T
AGA 124J MISS STANDARD ET 32R

DOMINO STANDARD DP LAD 45
BRITISHER WETMORE LADY AGA 5A
AGA 656U STANDARD ET 124J
AGA 22B MISS BRIGADER 511E

1B was the embryo calf that started out the 2014 calving year for us - a thick, long son of AGA 705 EASYGOING EXPRESS 67X out of an ideal mother cow, 40T. She's solid & massively deep - that extra cow definitely worth flushing, evidenced by flushmate ALNK 3B (also in this sale). 1B is the meaty, deep, pigmented, good hair-coated individual that we expected. His own birthweight of 76 lbs confirms that Bravo would be an **excellent choice for heifers**.

3

AGA 67X BADGER EXPRESS ET 3B

C03003558 ALNK 3B MARCH 10 2014

BW:	73
205:	605
'16 EPDs	
CE:	+2.4
BW:	+2.5
WW:	+36.0
YW:	+56.1
MCE:	+0.1
Milk:	+21.5
TM:	+39.5

CTY EASY 705T
AGA 705 EASYGOING EXPRESS 67X
AGA 21M MISS STANMORE 22T

AGA 10S STANDARD 137Y
COURTNEY LASS J921
AGA 20J STANMORE 21M
AGA 207N MISS SILVER 9R

DP BRITISHER AGA 46E
AGA 46E MISS BRITISHER 40T
AGA 124J MISS STANDARD ET 32R

DOMINO STANDARD DP LAD 45
BRITISHER WETMORE LADY AGA 5A
AGA 656U STANDARD ET 124J
AGA 22B MISS BRIGADER 511E

Badger 3B, flushmate to Bravo 1B, has the same depth, length, and thickness with a powerhouse build, compliments of his parents. His dam passes forward great genetics from her sire, XUB 46E, an outstanding sire from 30 years ago. Even though 3B is a bull for today, the EPD calculations unfairly punish the use of these older sires. A 73 lb birthweight, and mossy, curly haircoat rounds out this bull to badger his way past the numbers and into your herd as a **heifer bull (Feature bull)!**

10

AGA 53L RED DOMINO 10B

C02999486 ALNK 10B MARCH 17 2014

BW:	79
205:	592
'16 EPDs	
CE:	+0.3
BW:	+2.7
WW:	+38.8
YW:	+62.8
MCE:	+2.0
Milk:	+20.7
TM:	+40.1

CTY BRIGADER 22B
AGA 22B BRIGADER 53L
AGA 189C MISS DOMINO 4E

BAR PIPE BRIGADIER 19Y
LADY 66J B DOM 509
AGA 28Z DOMINO 189C
AGA 852 MISS STANMORE ET 5C

AGA 20J STANMORE 21M
AGA 21M MISS STANMORE 126T
AGA 656U MISS STANDARD 135J

AGA 121G STANMORE 20J
AGA 5C MISS ENERLAD 68K
STANDRD LAD 656 4ET
AGA 852 MISS STANMORE 22C

This lot-o-meat fella (79 lb BW) features extra width, length & thickness, very good bone structure & feet, worthy of a 53L son. (53L was known for leaving awesome females, easy-keeping, deep & correct, with great calves by side.) Not to be outdone, the good, moderate-sized dam 126T, with excellent feet, nice, tight quarters & little teats, transmits 21M's qualities (extremely fertile & productive daughters). Combine above with soundness, great shaped testicles, and way above-average feed-efficiency, and this 10B will breed many, many cows.

11

AGA 72S BERT'S ANDY BATMEN 11B

C02999487 ALNK 11B MARCH 18 2014

BW:	92
205:	700
'16 EPDs	
CE:	-0.4
BW:	+4.2
WW:	+58.2
YW:	+87.8
MCE:	+1.0
Milk:	+21.2
TM:	+50.3

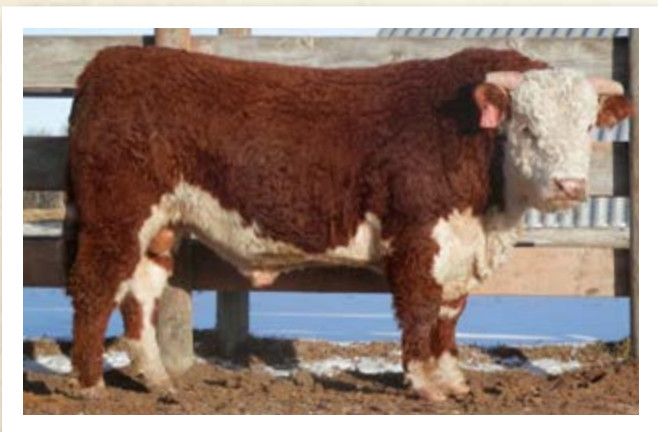
96 ANDY 7L
96 ANDY 72S
96 EVE 18N

96 ANDY 81F
96 HANNA 9J
DUNN'S 02C LAD 14E
96 LADY 56E

AGA 20J STANMORE 21M
AGA 21M MISS STANMORE 88S
AGA 656U MISS STANDARD ET 75P

AGA 121G STANMORE 20J
AGA 5C MISS ENERLAD 68K
STANDRD LAD 656 4ET
AGA 852 MISS STANMORE 22C

Here's a great **Feature Bull**, 87 lbs at birth, with splendid performance (120 WW indx, 115 YW indx) and length galore, under a straight top & over superb feet! Under the hide, he got high marbling (116 indx) and the great conformation & soundness of his sire, Andy 72S (from an awesome cow line). 11B's own dam, 88S, is a great cow sired by 21M, moderate-sized, with superb udder & feet, and rich milk from a tight udder to this day. Her stats & curve-bending calves mean 11B is more than just a Batman, he's a whole team of Batmen!



ULRICH HEREFORD RANCH COMING 2'S



12

AGA 18Z ZOOM STAN BENSON 12B

C03003478 ALNK 12B MARCH 19 2014

BW:	78
205:	618
'16 EPDs	
CE:	+0.6
BW:	+3.4
WW:	+48.6
YW:	+72.6
MCE:	+2.6
Milk:	+16.9
TM:	+41.2

AGA 55C STANDARD 18Y
AGA 18Y ZOOM STANDARD 18Z
 AGA 21M MISS STANMORE 76S

CFH 129S CASINO 934W
CFH 934W LASS 101Y
 CFH 21M LASS 958W

SILVER STANDARD 55C
 MISS 46E BRITISHER AGA 22L
 AGA 20J STANMORE 21M
 AGA 101J MISS STANDARD 140P

CARLRAMS 48H HUGO 129S
 CFH 77J SUPER STD LASS 144L
 AGA 20J STANMORE 21M
 CFH 245M ENERGY LASS 488P

Here's a thick, red, long & meaty, well-marked son of Zoom 18Z, with lots of eye appeal, out of a heifer purchased from Conway's dispersal. She turned out to be a great young cow. 12B was born 78 lbs, yet indexed 106 at weaning. The current RFI EPD list ranks Benson 12B well above average (474/1477) for feed efficiency, and sire Zoom 18Z even higher (136/1477). Overall, we recommend 12B as a **heifer bull** and also great for cows!



20

AGA 105T STAN GENERAL 20B

C02999663 ALNK 20B MARCH 20 2014

BW:	97
205:	676
'16 EPDs	
CE:	-3.2
BW:	+6.6
WW:	+51.9
YW:	+84.3
MCE:	-0.7
Milk:	+18.3
TM:	+44.3

AGA 13G GENERAL 114L
AGA 114L GENERAL 105T
 AGA 4K MISS STANMORE 221N

CTY BRIGADER 22B
AGA 22B MISS RED DOMINO 22R
 AGA 10K MISS STANDARD 230M

GEM GENERAL 13G
 AGA 656U MISS STANDARD ET 17H
 AGA 4016D STANMORE 4K
 AGA 44C MISS SILVER 85G

BAR PIPE BRIGADIER 19Y
 LADY 66J B DOM 509
 AGA 34Z STANDARD ET 10K
 AGA 277D MISS STANDARD 830H

A marvelous, quiet individual, 20B is sound, meaty, with thickness galore, excellent rib & wide loin plus a nice head & pigment on both eyes. At the other end, great testicles were formed just right - destined to breed many cows. Under the hide, he ranks 133/1477 for RFI, 128/1477 for RIG, plus 1st in REA and 2nd in RibFat. 105T is his attractive & well-marked sire, (see page 3) & his dam 22R is an ideal cow, moderate-sized, small flat udder - well cornered. Her male progeny avg'd 113 indx for both WN & YR. **Retaining Semen Interest**



28

AGA 48Y SUPER BOUNCER 28B

C03003559 ALNK 28B MARCH 26 2014

BW:	86
205:	703
'16 EPDs	
CE:	-1.3
BW:	+4.9
WW:	+57.3
YW:	+87.5
MCE:	+0.6
Milk:	+21.5
TM:	+50.2

CC 129D SUPERMAN 77J
AGA 77J SUPERMAN 48Y
 AGA 21M MISS STANMORE 88S

S BIG OAK 20S ET
AGA 20S MISS OAK 25W
 AGA 53L MISS RED DOMINO 218N

FE 07Y SUPER 129D
 CC 42W JULIANA 66Z
 AGA 20J STANMORE 21M
 AGA 656U MISS STANDARD ET 75P

K 64H RIBSTONE LAD 157K
 S 59K LASS 36M
 AGA 22B BRIGADER 53L
 AGA 656U MISS STANDARD 107J

28B is an excellent-footed bull, very long, thick right to the pants, wide pins, wide top, lots of ribcage and a curly haircoat to boot! Check out that curve-bending 86 lb BW to 120 WW index. This quality was passed down from Superman 48Y, who we retained a semen interest in when he sold in the 2013 sale to Douglas Lake, BC. 28B's mother, 25W, is long & feminine with rich milk and a tight udder, small, well-placed teats. Employ this Bouncer 28B to expel disorderly traits from your herd! **Retaining Semen Interest**



35

AGA 28Z BERKLEY SPORT 35B

C03003491 ALNK 35B MARCH 29 2014

BW:	95
205:	652
'16 EPDs	
CE:	-1.5
BW:	+6.3
WW:	+53.6
YW:	+83.8
MCE:	+0.1
Milk:	+20.4
TM:	+47.2

BANNERLANE 232 EXTRA GEN 60W
AGA 60W BANNER SPORT ZEAL 28Z
 AGA 705 MISS EASYGOING 905W

CC 129D SUPERMAN 77J
AGA 77J MISS YELLO SUPERMAN 5Y
 AGA 101J MISS STANDARD 140P

BBSF 6P SPORT 232S
 BANNERLANE GENSTAR LASS 27R
 CTY EASY 705T
 AGA 114L MISS STAR GENERAL 47S

FE 07Y SUPER 129D
 CC 42W JULIANA 66Z
 AGA 656U STANDARD ET 101J
 AGA 22B MISS BRIGADER 511E

Here's a Sport Zeal 28Z son, well-marked, with lots of substance, a good haircoat like his father, good quarters, solid and lots of extra rib! His mother was also an excellent cow, well-marked, feminine, with an excellent udder from a good-producing cow family. 35B wraps it all up with a good numbers package: WW index of 111, excellent REA index 111 (+.39 EPD) 1.17/100 lbs, Lean Meat Yield 65.3 and FMI of 140.2. Conclusion? There's lots of good meat here to pass along to your herd!

ULRICH HEREFORD RANCH COMING 2'S



36

AGA 53L RED DOMINO 36B

C03003492 ALNK 36B MARCH 29 2014

BW:	72
205:	523
'16 EPDs	
CE:	+0.4
BW:	+2.6
WW:	+33.1
YW:	+64.3
MCE:	+1.4
Milk:	+17.6
TM:	+34.2

CTY BRIGADER 22B	BAR PIPE BRIGADIER 19Y
AGA 22B BRIGADER 53L	LADY 66J B DOM 509
AGA 189C MISS DOMINO 4E	AGA 28Z DOMINO 189C
	AGA 852 MISS STANMORE ET 5C
AGA 13G GENERAL 114L	GEM GENERAL 13G
AGA 114L MISS GENERAL 57W	AGA 656U MISS STANDARD ET 17H
AGA 102E MISS EXTRA 60K	FE 27A EXTRA 102E
	AGA 335C MISS EXTRA 8G

Looking for marbling? 36B indexed 135 for Marbling, no doubt inherited from his sire, 53L, whose three 2014 bull calves' average MARB index was 122. The dam of 36B, 57W, comes from a family of great cows - his great grandmother, ALNK 8G, achieved the Canadian Hereford Association's Dam of Great Distinction award. 36B is a long, stretching individual with a 72 lb birthweight - **Recommended for heifers & cows.**



37

AGA 24W GENERAL WILEY'S 37B

C03003493 ALNK 37B MARCH 29 2014

BW:	57
205:	528
'16 EPDs	
CE:	+3.3
BW:	-1.0
WW:	+26.8
YW:	+51.9
MCE:	+3.1
Milk:	+19.8
TM:	+33.2

AGA 13G GENERAL 114L	GEM GENERAL 13G
AGA 114L GENERAL WILEY 24W	AGA 656U MISS STANDARD ET 17H
AGA 118L MISS STANDARD 2R	AGA 85J STANDARD 118L
	AGA 97J MISS RED EXTRA 203N
BANNERLANE 232 EXTRA GEN 60W	BBSF 6P SPORT 232S
AGA 60W MISS BANNER SPORT 50Z	BANNERLANE GENSTAR LASS 27R
AGA 4R MISS STANDARD 26T	AGA 53A STANDARD ET 4R
	AGA 124J MISS STANDARD 9L

Two goggle eyes, well-marked, good curly-hair, red testicles - plus 37B's considered a **heifer bull!** (See CE EPDs (+3.3) & BW EPD (-1.0) & actual BW 57 lbs with great vigour, up on the feet fast, & sucking quick.) A maternal background (many gen back) predicts voluminous cows, nice tight udders & longevity (STAY EPD +3.3!). His dam 50Z is well-marked & calves early. 24W adds great marbling, (in '14, 7 girls avg'd 148 indx, and 5 boys avg'd 130 indx for MARB) & sires excellent cows, great heifer/cow bulls, & is now working in Kansas.



40

AGA 24W BE GENERAL WILEY'S 40B

C03003495 ALNK 40B MARCH 29 2014

BW:	78
205:	508
'16 EPDs	
CE:	+0.6
BW:	+2.4
WW:	+35.6
YW:	+68.8
MCE:	+2.7
Milk:	+21.8
TM:	+39.6

AGA 13G GENERAL 114L	GEM GENERAL 13G
AGA 114L GENERAL WILEY 24W	AGA 656U MISS STANDARD ET 17H
AGA 118L MISS STANDARD 2R	AGA 85J STANDARD 118L
	AGA 97J MISS RED EXTRA 203N
AGA 20J STANMORE 21M	AGA 121G STANMORE 20J
AGA 21M MISS STANMORE 17T	AGA 5C MISS ENERLAD 68K
AGA 3G MISS DON DANDY ET 106K	DONORAH 412 DANDY LAD 3G
	SNS GENERATOR'S LADY 21A

Looking for red? How about this red neck, one goggle eye, and red testicles? Add some great quarters, a wide top, solid markings and you've got an all-around stout bull! The 24W effect adds that MARB indx of 112, and the EPD agrees with +.22. 40B was born at 78 lbs, his grandmother always calved heavier with any sire, but hang 24W & 21M on both sides of the pedigree to drag down that birthweight, and we can safely **recommend this 40B fella for heifers and cows.**



41

AGA 18Y BLAKELEY STANDARD 41B

C03003496 ALNK 41B MARCH 30 2014

BW:	75
205:	550
'16 EPDs	
CE:	+3.5
BW:	+1.8
WW:	+21.0
YW:	+35.0
MCE:	+0.7
Milk:	+13.7
TM:	+24.2

SILVER STANDARD 55C	STANDARD INTENSE 36T
AGA 55C STANDARD 18Y	VERN LADY 4X
MISS 46E BRITISHER AGA 22L	DP BRITISHER AGA 46E
	PINE COULEE MISCHIEF LADY 397
AGA 22B BRIGADER 97J	CTY BRIGADER 22B
AGA 97J MISS RED EXTRA 258P	AGA 335C MISS EXTRA 8G
AGA 141J MISS STANDARD 191M	AGA 191G STANDARD 141J
	AGA MISS CENTENNIAL 62C

Blakeley captures some favourite genetics of "an alphabet ago" from XUB 18Y - stout, great bone, excellent feet, great conformation, small eye-appealing head & topped off with a red neck & testicles. Dam, 258P, contributes great conformation, superb udder, & even turning 12, she's still the 1st at feed each day! 41B has an outstanding Marb indx (121) & 65.0 LMY, RFI Rank 356/1477, & RIG rank 690/1477. XUB 18Y may be old, but still powerful, correct & meaty! He competes today even in marbling: 2 female avg MARB indx: 168, & a son 121 index.

ULRICH HEREFORD RANCH COMING 2'S



43

AGA 203Y GREGORY PETE 43B

C03000239 ALNK 43B MARCH 31 2014

BW:	73
205:	545
'16 EPDs	
CE:	+3.
BW:	+1.0
WW:	+39.1
YW:	+79.1
MCE:	+3.9
Milk:	+25.3
TM:	+44.9

UPS DOMINO 3027
GCC PETE 203Y ET
LPG STANDARD 44B LASS 50H

AGA 13G GENERAL 114L
AGA 114L MISS GENERAL 23Z
AGA 72R MISS LADDIE 105U

CL 1 DOMINO 9126J 1ET
UPS MISS DIAMOND 1353
96 STANDARD 6A 25E
LPG COMMANDER 8080 LASS 59D
GEM GENERAL 13G
AGA 656U MISS STANDARD ET 17H
KGA 33H LAD 72R
AGA 21M MISS STANMORE 110S

73 lbs started off this fella's career, but that's not his only perk! He's stout and correct, really excellent feet & legs, well-marked with lots of red: red eyes, red neck and red testicles! He's got nicely balanced EPDs, plus ultrasound puts him near the top for Rib Eye Area. Not only does his dam, 23Z, come from a great cow family, but offspring are sure to be awesome because 43B's got the same build as his sire, Pete 203Y, & some may think even more handsome! All the heifers will be lined up at the gate and waiting! **Heifer bull.**



48

AGA 72S BERT'S ANDY BRAVE 48B

C03000313 ALNK 48B APRIL 01 2014

BW:	76
205:	582
'16 EPDs	
CE:	+0.4
BW:	+2.1
WW:	+39.0
YW:	+55.6
MCE:	+0.8
Milk:	+21.7
TM:	+41.2

96 ANDY 7L
96 ANDY 72S
96 EVE 18N

AGA 26R STANMORE 5T
AGA 5T MISS STANMORE DOM 90W
AGA 114L MISS GENERAL 62T

96 ANDY 81F
96 HANNA 9J
DUNN'S 02C LAD 14E
96 LADY 56E
AGA 21M STANMORE 26R
AGA 53L MISS RED DOMINO 122R
AGA 13G GENERAL 114L
AGA 20J MISS STANMORE 36L

72S stamps his emblem on this 48B son, with a long excellent top, & a round quarter with solid bone, carried by excellent feet! His feminine dam, 90W, has a flat udder with uniform quarters & even teats. Add those goggle eyes, well-shaped, big red testicles, good ultrasound scores (REA 1.14/100 lbs ; excellent LMY of 65) & a 76 lb BW & here's a great bull, from great parents, & will equal great offspring! (in 2015, full brother sold for \$11K to White Lake Colony, Nobleford.) 48B **will serve both heifers & cows!** **Retaining semen interest!**



53

AGA 72S BERT'S ANDY BRIDGE 53B

C03000318 ALNK 53B APRIL 02 2014

BW:	92
205:	623
'16 EPDs	
CE:	+2.0
BW:	+3.6
WW:	+51.2
YW:	+73.3
MCE:	+0.3
Milk:	+16.4
TM:	+42.0

96 ANDY 7L
96 ANDY 72S
96 EVE 18N

AGA 46E BRITISHER 32T
AGA 32T MISS BRITISHER 66W
AGA 4P MISS RIBSTONE 35T

96 ANDY 81F
96 HANNA 9J
DUNN'S 02C LAD 14E
96 LADY 56E
DP BRITISHER AGA 46E
AGA 6N MISS STANDARD 50R
LCI 157K RIBSTONE 4P
AGA 656U MISS STANDARD 45K

This lot is stout and well-muscled with a small head and clean front... He's got maternal traits built-in from both the sire side, 96 Andy 72S, and the bottom side, 66W. This dam has a really nice tight udder with evenly spaced cups and rich milk! Her two sons have averaged 88 lb birthweights and her two daughters averaged 73 lbs at birth. Let this 53B fella bridge those maternal gaps in your herd!



57

AGA 705 EASYGOING 57B

C03003500 ALNK 57B APRIL 03 2014

BW:	94
205:	604
'16 EPDs	
CE:	-0.2
BW:	+5.5
WW:	+43.4
YW:	+71.5
MCE:	-1.1
Milk:	+17.6
TM:	+39.3

AGA 10S STANDARD 137Y
CTY EASY 705T
COURTNEY LASS J921

CFH 73K LAD 479P
CFH 479P LASS 719T
CFH 124J GOVERNOR LASS 231M

SJSL HI 20 STAND LAD 10S
GU MISS 46E BRITISHER 10K
SNS SUPER SILVER 35D
COURTNEY LASS E522

RIVERBRIDGE 85G LAD 73K
CC 129D PRINCESS 119H
AGA 656U STANDARD ET 124J
CFH MISS GOVERNOR 451D

57B is a long rascal with quarters from sire Easy 705T. He performed well, and the ultrasound scan scored his REA as 1.10/100 lbs, all while keeping the marbling above average, indexing 102. His mother, 719T raised 3 bull calves to above average weaning weights (103 avg index) and two heifer calves to average weaning indexes of 104.

ULRICH HEREFORD RANCH COMING 2'S



59

AGA 72S BERT ANDY BENJAMIN 59B

C03003502 ALNK 59B APRIL 03 2014

BW:	95
205:	642
'16 EPDs	
CE:	+0.8
BW:	+3.1
WW:	+45.5
YW:	+59.5
MCE:	-0.6
Milk:	+17.5
TM:	+40.3

96 ANDY 7L	96 ANDY 81F
96 HANNA 9J	96 HANNA 9J
96 ANDY 72S	DUNN'S 02C LAD 14E
96 EVE 18N	96 LADY 56E
KGA 33H LAD 72R	F-R 8020 LAD 33H
AGA 72R MISS LADDIE 86U	KGA 33H STANDARD LASS 76K
AGA 70N MISS BRIT DOM 62S	AGA 79H BRIT DOM ET 70N
	AGA 44C MISS SILVER 61G

Benjamin 59B is built from a pedigree sure to translate into awesome females. There's 96 Andy 72S on the top side, and AGA 72R Miss Laddie 86U on the bottom side. It can't hurt to have some extra rib-eye area either, as ultrasound ranked him 2nd highest REA out of the stay-at-home group.



66

AGA 67X BLISS EXPRESS 66B

C03003509 ALNK 66B APRIL 04 2014

BW:	99
205:	679
'16 EPDs	
CE:	+1.8
BW:	+5.2
WW:	+49.5
YW:	+70.9
MCE:	+0.9
Milk:	+23.2
TM:	+48.0

CTY EASY 705T	AGA 10S STANDARD 137Y
AGA 705 EASYGOING EXPRESS 67X	COURTNEY LASS J921
AGA 21M MISS STANMORE 22T	AGA 20J STANMORE 21M
	AGA 207N MISS SILVER 9R
AGA 4P RIBSTONE 81S	LCI 157K RIBSTONE 4P
AGA 81S MISS RIBSTONE 43W	AGA 44K MISS OLD DOMINO 252M
AGA 53L MISS RED DOMINO 116R	AGA 22B BRIGADER 53L
	AGA 10B MISS BEAR 170M

Much of what we liked about Express 67X has spilled over into 66B! He's got that red down all 4 legs, red testicles, red neck, long body & good muscles & quarters! He's got exceptional WN (116 index) & good YR performance, REA 1.08/100 lbs, & a good RFI EPD. 43W's an excellent mother, deep, great hair-coat & plenty of milk dispensed from small teats. Her 3 sons' avg WW indx was 114! Rancher Arnie Hansen, of Stony Plain, AB got her last year's bull (110A) for \$8500. Whoever gets this 2014 model should be blissfully happy!



72

AGA 203Y GREGORY PETE BOOM 72B

C03000559 ALNK 72B APRIL 05 2014

BW:	
205:	741
'16 EPDs	
CE:	+2.3
BW:	+1.6
WW:	+41.2
YW:	+70.7
MCE:	+2.5
Milk:	+27.7
TM:	+48.3

UPS DOMINO 3027	CL 1 DOMINO 9126J 1ET
GCC PETE 203Y ET	UPS MISS DIAMOND 1353
LPG STANDARD 44B LASS 50H	96 STANDARD 6A 25E
	LPG COMMANDER 8080 LASS 59D
BANNERLANE 232 EXTRA GEN 60W	BBSF 6P SPORT 232S
AGA 60W MISS BANNER SPORT 16Z	BANNERLANE GENSTAR LASS 27R
AGA 114L MISS ULTRA GEN 99U	AGA 13G GENERAL 114L
	AGA 22B MISS BRIGADER 511E

Boom - so deep, so thick, plus excellent feet & legs! Sadly, the thick, moderate-sized dam (511E grand-daughter) didn't recover from a pre-calving injury, so 72B was fostered. His single grp doesn't portray his true WN performance (741 lbs) & his YR wt was only 2 lbs less than the heaviest! Sire Pete traditionally throws excellent light BWs, that gain incredibly fast, like 72B. RFI EPDs rank 110/1477; RIG EPDs rank 280/1477, MPI 149 & FMI 135.3 are both > avg, REA 1.12/100 lbs, Marb indx 125, & LMY is 65.7%. **Retaining semen interest!**



73

AGA 94Y RISING BLING 73B

C03000622 ALNK 73B APRIL 06 2014

BW:	95
205:	551
'16 EPDs	
CE:	-2.6
BW:	+5.6
WW:	+45.2
YW:	+63.9
MCE:	-1.6
Milk:	+14.7
TM:	+37.3

YV STAR STRUCK 915W	SNS 109L SILVER STONE 81N
YV 915W MR RISING STAR 94Y	AGA 72M MISS SUNSHINE LAD 282P
SNS 67F SILVER SKY LADY 107H	STR STD 87D DOMINO LAD 67F
	SNS 50B SILVER LADY 75E
C 82F MICKS KAPTAIN 82K	STANDARD 85A DOMINO 82F
AGA 82K MISS KAPTAIN 16R	AC MISS 359 ROBINSON 63F
AGA 656 MISS STANDARD 15M	STANDRD LAD 656 4ET
	AGA 335C MISS EXTRA 8G

73B is well muscled, long and has the glitzy perfect feet! He also inherited his sire, 94Y's great muscling, wide top and small attractive head. His mother, 16R, is long and adorned with volume and a superb udder and contributes her foot genetics along with those of 94Y. To top that off, this Bling 73B has some sparkling ultrasound scores: REA 1.22/100 lbs and MARB index of 142 in the Efficiency group. He'll be sure to sire some great tender ribs for the dining table, and will save you \$\$ to get it there (above average RFI EPD)!

ULRICH HEREFORD RANCH COMING 2'S



75

AGA 87W BUCK HAMMER 75B

C03000623 ALNK 75B APRIL 06 2014

BW:	84
205:	622
'16 EPDs	
CE:	+0.6
BW:	+3.2
WW:	+29.8
YW:	+56.7
MCE:	-0.1
Milk:	+17.4
TM:	+32.3

LFF 5L JACK HAMMER 26R
AGA 26R WHAM HAMMER 87W
AGA 44K MISS OLD DOMINO 252M

DIAMOND-T 25J LAD 5L
LFF 3B HI LITE EXTRA LASS 11E
AGA 1S OLD DOMINO 44K
AGA 102E MISS EXTRA 190K

CARLRAMS 48H HUGO 129S
CFH 129S LASS 153Y
CFH 82N LASS 662S

CARLRAMS HUGO 48H
CARLRAMS LADY DOMINO 33L
MN 53Z PRINCE DOMINO 82N
AGA 67Z MISS CENTENNIAL 504E

Buck 75B's got the pants you're looking for, and in the popular colour red! A deep-bodied, well-muscled thick bull with red eyes, red testicles, red neck and curly hair coat - red all over! These were hand-me-downs from Wham Hammer 87W, so of course good performance is included!



77

AGA 53L RED DOMINO BUDGE 77B

C03000625 ALNK 77B APRIL 07 2014

BW:	108
205:	600
'16 EPDs	
CE:	-1.9
BW:	+6.9
WW:	+46.2
YW:	+78.7
MCE:	+0.0
Milk:	+19.9
TM:	+43.0

CTY BRIGADER 22B
AGA 22B BRIGADER 53L
AGA 189C MISS DOMINO 4E

BAR PIPE BRIGADIER 19Y
LADY 66J B DOM 509
AGA 28Z DOMINO 189C
AGA 852 MISS STANMORE ET 5C

AGA 20J STANMORE 21M
AGA 21M MISS STANMORE 110S
AGA 41F MISS HI STANDARD 90P

AGA 121G STANMORE 20J
AGA 5C MISS ENERLAD 68K
BANNERLANE HI STANDARD 41F
AGA 22B MISS BRIGADER 23L

We've been really happy with our bulls' success in the RFI Efficiency tests. Budge 77B is no exception. RFI EPD ranks 193/1477, & RIG ranks 136/1477, so he's certainly expected to pass efficiency on to his offspring, much like his sire, 53L, passed it on to him. 53L himself has RIG EPDs ranking 129/1477 & his RFI EPD's just a few points lower - ranking 294/1477. 77B has great muscle pattern, an attractive head, performance & great loin to boot. His elderly mother, 110S, is sound as a kitten & still has an udder like a first-calver - tight & rich.



81

AGA 4R STANDARD BRAXTON 81B

C03003516 ALNK 81B APRIL 08 2014

BW:	83
205:	619
'16 EPDs	
CE:	+1.8
BW:	+2.5
WW:	+38.9
YW:	+62.3
MCE:	+0.2
Milk:	+19.7
TM:	+39.2

SGC 14X STANDARD LAD 53A
AGA 53A STANDARD ET 4R
AGA 22B MISS BRIGADER 511E

STANDARD K LAD 14X
SGC BRIT STANDARD LASS 1U
CTY BRIGADER 22B
AGA MISS 42X STANMORE 94Z

AGA 21M STANMORE 26R
AGA 26R MISS STANMORE 108T
AGA 114L MISS GENERAL 126R

AGA 20J STANMORE 21M
AGA 91L MISS STANDARD 148N
AGA 13G GENERAL 114L
AGA 97J MISS BRIGADER 75L

81B (83 lb BW) is **recommended for both heifers & cows**. He's long as a train, correct & eye-appealing, smooth all over with red neck & red testicles. He performed well (106 WN indx), ultrasounded as REA 1.15/100 lbs & LMY 65.5, & was above avg at RFI Trial. Sire, 4R, powerful, complete & easy calving, was used by Henderson's & Ramsay's. Dam, 108T, is a pretty, moderate-sized cow with curly haircoat, red to the feet, a nice small udder & well-placed, tight, neat cups to this day! 4 sons avg'd 83 lbs & 3 females 85 lbs BW.



82

AGA 24W GENERAL WILEY'S 82B

C03003517 ALNK 82B APRIL 08 2014

BW:	103
205:	610
'16 EPDs	
CE:	-2.5
BW:	+6.6
WW:	+41.4
YW:	+75.0
MCE:	+0.3
Milk:	+20.8
TM:	+41.5

AGA 13G GENERAL 114L
AGA 114L GENERAL WILEY 24W
AGA 118L MISS STANDARD 2R

GEM GENERAL 13G
AGA 656U MISS STANDARD ET 17H
AGA 85J STANDARD 118L
AGA 97J MISS RED EXTRA 203N

AGA 22B BRIGADER 53L
AGA 53L MISS RED DOMINO 122R
AGA 656 MISS STANDARD 69M

CTY BRIGADER 22B
AGA 189C MISS DOMINO 4E
STANDRD LAD 656 4ET
AGA 69G MISS EXTRA 10J

82B landed up near the top of the list for RFI EPD (ranking 148/1477) and RIG EPD was even higher (ranking 78/1477)! He's long & docile, with a small head and long neck, good performance, really good heel and sound feet that are planted well on the ground! His sire, 24W, leaves superb females and is now working in Kansas. 82B's dam, 122R, was a great cow in her time, raising herdsires like 5T, who sired a few of the top cows in our herd like 90W. She mothered 19A (sold to White Lake Colony last year), and 48B (also in this sale).

ULRICH HEREFORD RANCH COMING 2'S

83

AGA 67X BANKROLL EXPRESS 83B

C03003518 ALNK 83B APRIL 08 2014



BW:	101
205:	718
'16 EPDs	
CE:	-1.5
BW:	+6.3
WW:	+50.0
YW:	+70.7
MCE:	+0.8
Milk:	+21.4
TM:	+46.4

CTY EASY 705T
AGA 705 EASYGOING EXPRESS 67X
 AGA 21M MISS STANMORE 22T

AGA 10S STANDARD 137Y
 COURTNEY LASS J921
 AGA 20J STANMORE 21M
 AGA 207N MISS SILVER 9R

CC 129D SUPERMAN 77J
AGA 77J MISS SUPERMAN ET 714T
 AGA 656U MISS STANDARD ET 17H

FE 07Y SUPER 129D
 CC 42W JULIANA 66Z
 STANDRD LAD 656 4ET
 AGA MISS 80S VOLTAGE ET 14X

Here's a thick powerful son of Express 67X - correct, with excellent bone, well-made, with eye-appeal and a head held high with pride! His sire, Express, was stout with that extra thickness, wide loin, and has truly made an impression passing these traits on to 83B. 83B's dam, 714T has that deep rib, volume, and is 3rd generation ET. Add that all up, and 83B topped the scales at weaning and ranked 3rd at yearling... plus a bonus 116 index for Marbling! It's no wonder we call this fella, Bankroll! **(Feature Bull)**

91

AGA 28Z SPORT 91B

C03003522 ALNK 91B APRIL 11 2014



BW:	90
205:	662
'16 EPDs	
CE:	-0.9
BW:	+5.3
WW:	+42.2
YW:	+73.3
MCE:	-1.0
Milk:	+21.1
TM:	+42.2

BANNERLANE 232 EXTRA GEN 60W
AGA 60W BANNER SPORT ZEAL 28Z
 AGA 705 MISS EASYGOING 905W

BBSF 6P SPORT 232S
 BANNERLANE GENSTAR LASS 27R
 CTY EASY 705T
 AGA 114L MISS STAR GENERAL 47S

AGA 46E BRITISHER ET 2U
AGA 2U MISS BRITISHER 182Y
 AGA 114L MISS GENERAL 26W

DP BRITISHER AGA 46E
 AGA 22B MISS BRIGADER 511E
 AGA 13G GENERAL 114L
 AGA 41P MISS BRIT KAPTAIN 84S

Here's a son of the goggle-eyed, deep-ribbed sire Zeal 28Z. Beyond his "Curious George" personality, 91B is well-marked with red testicles and a red neck. He's really good-footed, sound & long, yet still well-muscled, eye-appealing & docile, with solid performance - WW 113 indx, and FMI EPD 146. He also ranks well above average with RFI EPDs. He was born to a great first-calving young mother, 182Y, who can brag about having both 2U & 46E on the top side of her pedigree & 114L on the bottom side!

95

AGA 94Y RISING STAR JR 95B

C03000839 ALNK 95B APRIL 13 2014



BW:	92
205:	599
'16 EPDs	
CE:	-0.9
BW:	+5.7
WW:	+46.4
YW:	+73.4
MCE:	+0.1
Milk:	+13.7
TM:	+36.9

YV STAR STRUCK 915W
YV 915W MR RISING STAR 94Y
 SNS 67F SILVER SKY LADY 107H

SNS 109L SILVER STONE 81N
 AGA 72M MISS SUNSHINE LAD 282P
 STR STD 87D DOMINO LAD 67F
 SNS 50B SILVER LADY 75E

LCI 68R RED STANDARD 109U
AGA 109U MISS EXACT STAN 125X
 AGA 44K MISS OLD DOMINO 252M

JNHR RED STANDARD 68R
 LCI KD CRYSTAL 7N
 AGA 1S OLD DOMINO 44K
 AGA 102E MISS EXTRA 190K

95B wears a red, fuzzy coat over a well-muscled body, with lots of quarter, good solid bone & strong legs! This cutie's marked well, & sports red testicles. His sire 94Y has left us nice uniform, stout, correct bulls like this 95B. The charming dam, 125X, is another mix of old & new genetics, contributing volume & marbling ability. 95B comes by his 148 MARB indx from both top & bottom, and is prepared to sire tender & juicy, plus plentiful (REA 1.09/100 lbs) while costing less to produce: RFI EPD ranks 254/1477 and RIG EPD ranks 424/1477.

98

AGA 24W GENERAL WILEY'S 98B

C03000874 ALNK 98B APRIL 14 2014



BW:	89
205:	655
'16 EPDs	
CE:	-1.7
BW:	+4.5
WW:	+42.4
YW:	+71.9
MCE:	+1.5
Milk:	+21.3
TM:	+42.5

AGA 13G GENERAL 114L
AGA 114L GENERAL WILEY 24W
 AGA 118L MISS STANDARD 2R

GEM GENERAL 13G
 AGA 656U MISS STANDARD ET 17H
 AGA 85J STANDARD 118L
 AGA 97J MISS RED EXTRA 203N

CTY EASY 705T
AGA 705 MISS EASYGOING 18X
 AGA 65R MISS BRIT DOM 23T

AGA 10S STANDARD 137Y
 COURTNEY LASS J921
 AGA 70N BRIT DOM 65R
 AGA 13G MISS GENERAL 141L

89 lbs at birth, plus good performance (112 WN index and 106 YR index) plus great ultrasound scores throughout (indexes: Rump 132, REA 150, MARB 131 and REA 1.10/100 lbs) - what more could you ask for? OK, he's got that curly, mossy hair coat and red testicles, plus he's sired by Wiley 24W, who's powerful in performance, MARB (female 148 avg index and male 130 avg index) AND calving ease. His dam, 18X, is a great cow with a great udder and a nice pedigree for background. Her 3 bull calves to date have averaged 107 WN index.

ULRICH HEREFORD RANCH COMING 2'S

100

AGA 94Y RISING BANKROLL 100B

C03000892 ALNK 100B APRIL 15 2014

BW:	99
205:	664
'16 EPDs	
CE:	-2.3
BW:	+6.7
WW:	+56.4
YW:	+79.8
MCE:	+0.2
Milk:	+17.7
TM:	+45.9

YV STAR STRUCK 915W
YV 915W MR RISING STAR 94Y
SNS 67F SILVER SKY LADY 107H

CC 77J JARROD 26T
AGA 26T MISS JARROD 88X
AGA 21M MISS STANMORE 128T

SNS 109L SILVER STONE 81N
AGA 72M MISS SUNSHINE LAD 282P
STR STD 87D DOMINO LAD 67F
SNS 50B SILVER LADY 75E

CC 129D SUPERMAN 77J
CC 14N JOCELYN 33R
AGA 20J STANMORE 21M
AGA 97J MISS RED EXTRA 35R

Yellow, mossy-haired, handsome & built like a brick, 100B is deep-bodied, well-muscled with red testicles, & red neck. He's got plenty of performance (index WW 113, YW 105) & scored 1st in Marb group left at home (MARB EPD +0.42) Proud papa, 94Y, no doubt passed marbling on: 8 heifers indexed avg 119 & 11 sons indexed avg 113 in MARB. 100B's dam, 88X, is superb from every angle & has the #s to prove it: 2 heifers indexed 112 WN & 110 YR, her TM EPD 51.3, MCE +2.4, STAY +1.2, MPI +157.8, FMI +151.9, MARB +0.62!

102

AGA 94Y RISING BEACHBOY 102B

C03000894 ALNK 102B APRIL 16 2014

BW:	96
205:	658
'16 EPDs	
CE:	-3.2
BW:	+8.2
WW:	+60.7
YW:	+91.2
MCE:	-2.5
Milk:	+16.8
TM:	+47.2

YV STAR STRUCK 915W
YV 915W MR RISING STAR 94Y
SNS 67F SILVER SKY LADY 107H

AGA 4P RIBSTONE 34T
AGA 34T MISS RIBSTONE KIN 08X
AGA 41F MISS HI STANDARD 53S

SNS 109L SILVER STONE 81N
AGA 72M MISS SUNSHINE LAD 282P
STR STD 87D DOMINO LAD 67F
SNS 50B SILVER LADY 75E

LCI 157K RIBSTONE 4P
AGA 101J MISS STANDARD 140P
BANNERLANE HI STANDARD 41F
AGA 335C MISS EXTRA 8G

102B is stout, correct, well-pigmented, well-marked, with excellent bone & superb feet and comes complete with red testicles, red mossy haircoat & ample performance (WN 112 indx). He also ranks high above avg on both RFI (325/1477) & RIG (567/1477). Sire, 94Y, was correct & stout - his progeny rank high across the board in ultrasound. (See 102B's REA 1.13/100 lbs & LMY 65.2.) 102B's dam, 08X, has 2 sons avg WW index 109 & a heifer WW index 117. There'll be no time to play for this Beachboy! **Retaining semen interest.**

103

AGA 94Y RISING BAXTER 103B

C03000996 ALNK 103B APRIL 17 2014

BW:	98
205:	625
'16 EPDs	
CE:	-2.9
BW:	+7.4
WW:	+52.6
YW:	+81.5
MCE:	-0.6
Milk:	+18.0
TM:	+44.3

YV STAR STRUCK 915W
YV 915W MR RISING STAR 94Y
SNS 67F SILVER SKY LADY 107H

AGA 13G GENERAL 114L
AGA 114L MISS GENERAL 73W
AGA 21M MISS STANMORE 19R

SNS 109L SILVER STONE 81N
AGA 72M MISS SUNSHINE LAD 282P
STR STD 87D DOMINO LAD 67F
SNS 50B SILVER LADY 75E

GEM GENERAL 13G
AGA 656U MISS STANDARD ET 17H
AGA 20J STANMORE 21M
AGA 53L MISS RED DOMINO 218N

Rising Star 94Y was a purchase at the Medicine Hat Bull Sale from Nels & Terri Nixdorff. His sire, 915W, produced a good set of uniform offspring, & 94Y's dam, 107H, was a fantastic cow flushed many times. 103B is a combination of this legacy and our own 73W (from a great cow family & generations of great udders). 73W has superb conformation, and exceptional feet! It's no wonder Baxter 103B has lots of length & some impressive numbers on his résumé: 107 WW indx, REA indx 110, 1.21/100 lbs, LMY 65.0, & good RFI EPD.

105

AGA 18Z ZOOMSTAN BACKSLAP 105B

C03003524 ALNK 105B APRIL 17 2014

BW:	96
205:	641
'16 EPDs	
CE:	-2.7
BW:	+7.2
WW:	+52.7
YW:	+83.2
MCE:	-0.2
Milk:	+18.7
TM:	+45.1

AGA 55C STANDARD 18Y
AGA 18Y ZOOM STANDARD 18Z
AGA 21M MISS STANMORE 76S

AGA 13G GENERAL 114L
AGA 114L MISS GENERAL 141X
AGA 53L MISS RED DOMINO 116R

SILVER STANDARD 55C
MISS 46E BRITISHER AGA 22L
AGA 20J STANMORE 21M
AGA 101J MISS STANDARD 140P

GEM GENERAL 13G
AGA 656U MISS STANDARD ET 17H
AGA 22B BRIGADER 53L
AGA 10B MISS BEAR 170M

This Zoom 18Z son has his great bone and same "attraction" flare that sets him apart. Backslap 105B is a meaty fella and the pants fill with muscling from the quarter and wide top we'd expect from a Zoom 18Z progeny! His RFI EPD ranks 187/1477 and ultrasound scans confirms the meat factor by a 65% LMY score. The excellent dam, 141X, has volume galore and an udder with square cups. She raised this son with a 110 WW index and her two daughters averaged 105.5 WW index.

ULRICH HEREFORD RANCH COMING 2'S

108

AGA 24W GENERAL WILEY'S 108B

C03001062 ALNK 108B APRIL 19 2014



BW:	78
205:	504
'16 EPDs	
CE:	+0.6
BW:	+3.8
WW:	+31.4
YW:	+58.6
MCE:	+2.5
Milk:	+16.2
TM:	+31.9

AGA 13G GENERAL 114L	GEM GENERAL 13G
AGA 114L GENERAL WILEY 24W	AGA 656U MISS STANDARD ET 17H
AGA 118L MISS STANDARD 2R	AGA 85J STANDARD 118L
	AGA 97J MISS RED EXTRA 203N
AGA 55C STANDARD 18Y	SILVER STANDARD 55C
AGA 18Y MISS STANDARD 55Z	MISS 46E BRITISHER AGA 22L
AGA 656U MISS STANDARD 45K	STANDRD LAD 656 4ET
	AGA 40Y MISS BRITISHER 88F

Extreme thickness, a wide top, good doing ability & red testicles, plus a great heifer bull - yes, it's 108B! His small, lovely head was acquired from sire 24W, (Trait Leader BW EPD +1.2) who's sired outstanding cows & great marbling (+.31 MARB EPD - both sire & son). Dam, 55Z, goes back to the old 18Y, so she's thick & meaty, moderate-sized, voluminous, and owns a complete udder. Old genetics can boost carcass traits too - 108B's indexes: 115 RibFat, 105 REA & a whopping 160 MARB! What a combination to present to the breed!

113

AGA 94Y RISING BENTLEY 113B

C03001263 ALNK 113B APRIL 21 2014



BW:	89
205:	501
'16 EPDs	
CE:	-2.3
BW:	+5.9
WW:	+49.2
YW:	+79.7
MCE:	-0.3
Milk:	+14.8
TM:	+39.4

YV STAR STRUCK 915W	SNS 109L SILVER STONE 81N
YV 915W MR RISING STAR 94Y	AGA 72M MISS SUNSHINE LAD 282P
SNS 67F SILVER SKY LADY 107H	STR STD 87D DOMINO LAD 67F
	SNS 50B SILVER LADY 75E
AGA 20J STANMORE 21M	AGA 121G STANMORE 20J
CFH 21M LASS 159Y	AGA 5C MISS ENERLAD 68K
CFH 129S LASS 932W	CARLRAMS 48H HUGO 129S
	CFH 245M DOM LASS 486P

A golden, curly, mossy haircoat adds to that "it factor" - an attractive quality exuded by 113B, along with his true conformation. He's stout, well-muscled and travels with soundness & freedom. The sire, 94Y, has plenty of his own stoutness & correctness to pass on, along with high marbling qualities. 113B's MARB index was 147 & he was born weighing only 84 lbs. His dam, 153Y, was a 21M daughter with a nice udder, rich milk & full of pride for this son. Be sure to bid on this Bentley to carry your herd to the next level!

116

AGA 94Y RISING BUCKLEY 116B

C03003532 ALNK 116B APRIL 23 2014



BW:	102
205:	600
'16 EPDs	
CE:	-2.1
BW:	+7.6
WW:	+50.9
YW:	+83.8
MCE:	-0.9
Milk:	+11
TM:	+36.5

YV STAR STRUCK 915W	SNS 109L SILVER STONE 81N
YV 915W MR RISING STAR 94Y	AGA 72M MISS SUNSHINE LAD 282P
SNS 67F SILVER SKY LADY 107H	STR STD 87D DOMINO LAD 67F
	SNS 50B SILVER LADY 75E
LCI 68R RED STANDARD 109U	JNHR RED STANDARD 68R
AGA 109U MISS RIB STANDARD 90X	LCI KD CRYSTAL 7N
AGA 73R MISS STANDARD 3T	AGA 41F HI STANDARD 73R
	AGA 53L MISS RED DOMINO 14N

This Buckley won't be hard to swallow! Take a look at his stout frame, with exceptional performance, muscle in the quarters, pants full, wide table-like top, and eye-appeal. He's another product of the 94Y sire, who consistently leaves incredible bulls just like this. The bone and substance is undeniable. The dam, 90X, has the volume to go, and a tight udder and nicely spaced small teats.

127

AGA 94Y RISING STAR JR 127B

C03001754 ALNK 127B MAY 01 2014



BW:	96
205:	633
'16 EPDs	
CE:	-2.2
BW:	+6.5
WW:	+49.5
YW:	+72.8
MCE:	-2.3
Milk:	+15.9
TM:	+40.7

YV STAR STRUCK 915W	SNS 109L SILVER STONE 81N
YV 915W MR RISING STAR 94Y	AGA 72M MISS SUNSHINE LAD 282P
SNS 67F SILVER SKY LADY 107H	STR STD 87D DOMINO LAD 67F
	SNS 50B SILVER LADY 75E
STANDRD LAD 656 4ET	HI STANDARD LAD 20P
AGA 656 MISS STANDARD ET 106M	BELL L 60H DOMINO LASS 82K
AGA 22B MISS BRIGADER 511E	CTY BRIGADER 22B
	AGA MISS 42X STANMORE 94Z

This great bull has a curly hair coat, great feet & legs, plus extreme muscling wherever muscles ought to be! His quarters round, his loins wide, all no doubt passed down from sire 94Y, a stout bull with muscling aplenty! 127B's dam, 106M, is an ET calf proving herself well (11 males avg WW index 103.5 & 1 female at 112.0) with her length & extra rib. She also brings "pretty" & correctness! She's proud of her 127B: WW index 108, & a good RFI EPD while the ultra-sound scanner etched out a 112 REA indx, 1.31 REA/100 lbs & LMY of 65.9!

ULRICH HEREFORD RANCH COMING 2'S



129

AGA 203Y GREGORY PETE 129B

C03001755 ALNK 129B MAY 01 2014

BW:	71
205:	533
'16 EPDs	
CE:	+3.5
BW:	+1.5
WW:	+39.5
YW:	+81.3
MCE:	+3.8
Milk:	+22.7
TM:	+42.5

UPS DOMINO 3027
GCC PETE 203Y ET
 LPG STANDARD 44B LASS 50H

CL 1 DOMINO 9126J 1ET
 UPS MISS DIAMOND 1353
 96 STANDARD 6A 25E
 LPG COMMANDER 8080 LASS 59D

SGC 76P ROYAL AMIGO 174S
AGA 174S MS ROYAL AMIGO ET 1Z
 AGA 656U MISS STANDARD ET 17H

EHF RED LAD 76P
 XTC 126L AMIGO BELLE 101N
 STANDRD LAD 656 4ET
 AGA MISS 80S VOLTAGE ET 14X

Great, powerful feet, compliments of sire, Pete 203Y, along with calving ease and light birthweight and rapid growth, are notable features inherited by 129B. He weighed only 71 lbs at birth and his yearling weight indexed 112 - 2nd highest of the "stay-at-home" group... He's got muscling and thickness to boot - wrapping up the complete package. **Heifer bull.**



133

AGA 94Y RISING STAR JR 133B

C03002165 ALNK 133B MAY 03 2014

BW:	107
205:	601
'16 EPDs	
CE:	-3.7
BW:	+7.4
WW:	+52.8
YW:	+85.2
MCE:	-0.7
Milk:	+19.2
TM:	+45.6

YV STAR STRUCK 915W
YV 915W MR RISING STAR 94Y
 SNS 67F SILVER SKY LADY 107H

AGA 20J STANMORE 21M
AGA 21M MISS STANMORE 100R
 AGA 13G MISS GENERAL 249N

SNS 109L SILVER STONE 81N
 AGA 72M MISS SUNSHINE LAD 282P
 STR STD 87D DOMINO LAD 67F
 SNS 50B SILVER LADY 75E

AGA 121G STANMORE 20J
 AGA 5C MISS ENERLAD 68K
 GEM GENERAL 13G
 AGA 656U MISS STANDARD ET 17H

The weaning & yearling are what we expected from sire 94Y. 133B is stout, deep, thick & red: red eyes, red neck and red testicles! Plus he shows up in RFI top! (RFI EPD ranks 471/1477). The dam 100R has done really well again: 5 bull calves BW avg 93 lbs and 102.4 WW index; 4 females avg'd 84 lbs BW and 106.5 index at WW. She consistently delivers exceptionally good offspring, passing on her maternity traits while toting a great udder to this day. Purebred breeder, Joe Scherloski got her 2013 calf (Axe 4A) last year. Who will get 133B?



136

AGA 28Z SPORT 136B

C03003538 ALNK 136B MAY 05 2014

BW:	92
205:	597
'16 EPDs	
CE:	-0.3
BW:	+5.2
WW:	+38.9
YW:	+59.5
MCE:	-0.5
Milk:	+18.0
TM:	+37.5

BANNERLANE 232 EXTRA GEN 60W
AGA 60W BANNER SPORT ZEAL 28Z
 AGA 705 MISS EASYGOING 905W

BBSF 6P SPORT 232S
 BANNERLANE GENSTAR LASS 27R
 CTY EASY 705T
 AGA 114L MISS STAR GENERAL 47S

LPG HERMAN LORD LAD 2W
CFH 2W LASS 133Y
 CFH 245M SUPER LADY 481P

MHH 011H BRIT LAD 46R
 LPG LANDLORD G44B LASS 50S
 CFH 124J STAMPEDER 245M
 CFH 122E SUPER ADV LADY 931J

136B is, in many ways, identical to his sire, Sport Zeal 28Z! He's got that same depth, wide pins, and wide table top! He's marked with excessive pigment and 100% red testicles and red neck. He performed well at weaning, and scored impressively in ultrasound all-around: REA 1.18/100 lbs, Lean Meat Yield 65.4% and indexed 118 for MARB. 136B also went to the RFI trial and easily passed RFI EPDs.



137

AGA 94Y RISING STAR JR 137B

C03002251 ALNK 137B MAY 06 2014

BW:	94
205:	545
'16 EPDs	
CE:	-2.9
BW:	+7.3
WW:	+53.2
YW:	+82.7
MCE:	-1.0
Milk:	+11.1
TM:	+37.7

YV STAR STRUCK 915W
YV 915W MR RISING STAR 94Y
 SNS 67F SILVER SKY LADY 107H

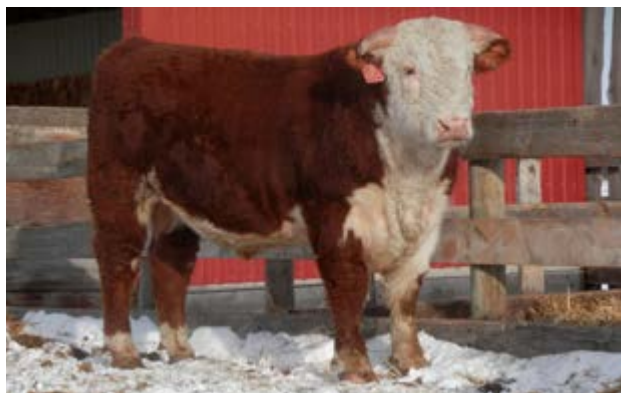
CC 77J JARROD 26T
AGA 26T MISS JARROD 79Y
 AGA 81S MISS RIBSTONE 68U

SNS 109L SILVER STONE 81N
 AGA 72M MISS SUNSHINE LAD 282P
 STR STD 87D DOMINO LAD 67F
 SNS 50B SILVER LADY 75E

CC 129D SUPERMAN 77J
 CC 14N JOCELYN 33R
 AGA 4P RIBSTONE 81S
 AGA 656U MISS STANDARD ET 92P

You can't miss the goggle eyes (yes, both!), red neck and red testicles on this fella with the mossy, thick, haircoat right to the toes, tailored to take the cold! His excellent top, excellent bone, & good quarters make him comparable to his sire, the stout, good-lookin' Rising Star 94Y! The dam, 79Y, is feminine with a nice udder, sired by Jarrod 26T who left many great females just like her. 137B ranked 1st in REA (112 index) of the home group and gains well on feed.

ULRICH HEREFORD RANCH COMING 2'S



139

AGA 203Y GREGORY PETE 139B

C03002279 ALNK 139B MAY 07 2014

BW:	79
205:	530
'16 EPDs	
CE:	+4.0
BW:	+0.9
WW:	+38.5
YW:	+73.4
MCE:	+4.1
Milk:	+21.6
TM:	+40.9

UPS DOMINO 3027	CL 1 DOMINO 9126J 1ET
GCC PETE 203Y ET	UPS MISS DIAMOND 1353
LPG STANDARD 44B LASS 50H	96 STANDARD 6A 25E
	LPG COMMANDER 8080 LASS 59D
CC 77J JARROD 26T	CC 129D SUPERMAN 77J
AGA 26T MISS JARROD 106Z	CC 14N JOCELYN 33R
AGA 53L MISS RED DOMINO 218N	AGA 22B BRIGADER 53L
	AGA 656U MISS STANDARD 107J

139B would gladly **roam with heifers!** Born at 79 lbs (compliments of sire, Pete 203Y), he's a correct, "head up" individual with the patterning & conformation, small head, moderate size, tight shoulder & known thickness throughout that we're all striving for. He's excellent on feed & keeps on gaining great! Note those low BW EPDs, & high CE EPDs! Marb EPD of +.26 is a perk confirmed by the extreme 158 MARB index when scanned. Dam 106Z has excellent feet, udder, and conformation - no wonder - she comes from a great cow family!



148

AGA 114L GENERAL BARACUDA 148B

C03002484 ALNK 148B MAY 17 2014

BW:	96
205:	639
'16 EPDs	
CE:	-1.0
BW:	+4.5
WW:	+43.6
YW:	+73.4
MCE:	+2.3
Milk:	+24.8
TM:	+46.6

GEM GENERAL 13G	GENERATOR STANDARD 10A
AGA 13G GENERAL 114L	AD 75N LASS 31W
AGA 656U MISS STANDARD ET 17H	STANDRD LAD 656 4ET
	AGA MISS 80S VOLTAGE ET 14X
AGA 20J STANMORE 21M	AGA 121G STANMORE 20J
AGA 21M MISS STANMORE 123S	AGA 5C MISS ENERLAD 68K
AGA 97J MISS RED EXTRA 258P	AGA 22B BRIGADER 97J
	AGA 141J MISS STANDARD 191M

148B is a really long, well-muscled, attractive son of 114L with tremendous overall performance. He also did really well in RFI (RFI EPD rank 322/1447 & RIG EPD rank 409/1477). The dam, 123S, is the ideal cow: attractive, thick, moderately framed, supreme udder, great coat/hair, & daughter of 21M! Her 6 bulls avg'd 86 lb BW & 106.5 WN indx and 2 heifers avg'd 78 lb BW & a 111 WN indx. She oozes maternal: 30.4 Milk EPD & 50.4 TM EPD - a great choice for our outstanding 114L in his last natural year. **Retaining semen interest**



150

AGA 705 EASYGOING 150B

C03002720 ALNK 150B MAY 23 2014

BW:	85
205:	518
'16 EPDs	
CE:	+4.0
BW:	+1.8
WW:	+32.5
YW:	+54.4
MCE:	+1.7
Milk:	+20.6
TM:	+36.9

AGA 10S STANDARD 137Y	SJSL HI 20 STAND LAD 10S
CTY EASY 705T	GU MISS 46E BRITISHER 10K
COURTNEY LASS J921	SNS SUPER SILVER 35D
	COURTNEY LASS E522
AGA 20J STANMORE 21M	AGA 121G STANMORE 20J
AGA 21M MISS STANMORE 151P	AGA 5C MISS ENERLAD 68K
AGA 97J MISS RED EXTRA 145M	AGA 22B BRIGADER 97J
	AGA 47F MISS DOMINO 15K

150B was born late, almost June, at 85 lbs. His grandsire, 137Y was a home-raised sire known for great BW & CE, thickness & excellent moms. 150B has a 21M daughter for Mom - extreme volume, longevity, a great udder, 4 sons avging 80 lbs & 5 heifers avging 86 lbs BW (CE EPD +4.5 and BW -0.4). 21M's EPDs: CE +2.0, MCE +6.1, FMI +133.3, & MARB +0.23 & still a **Trait Leader in BW +1.5, Milk +35.7, TM +61.3, MPI +166!** 150B has marb, length, a small head & tucked-in shoulder for ease of calving. **Recommended for heifers/cows**



151

AGA 87W HAMMER 151B

C03002721 ALNK 151B MAY 25 2014

BW:	97
205:	602
'16 EPDs	
CE:	+0.2
BW:	+4.8
WW:	+36.5
YW:	+71.3
MCE:	-0.7
Milk:	+16.7
TM:	+35.0

LFF 5L JACK HAMMER 26R	DIAMOND-T 25J LAD 5L
AGA 26R WHAM HAMMER 87W	LFF 3B HI LITE EXTRA LASS 11E
AGA 44K MISS OLD DOMINO 252M	AGA 1S OLD DOMINO 44K
	AGA 102E MISS EXTRA 190K
AGA 13G GENERAL 114L	GEM GENERAL 13G
AGA 114L MISS GENERAL 35U	AGA 656U MISS STANDARD ET 17H
AGA 53A MISS STANDARD ET 152M	SGC 14X STANDARD LAD 53A
	AGA 22B MISS BRIGADER 511E

Looking for those genetics that eat less (RFI) and gain more (RIG)? Check out 151B's great accomplishment at the Efficiency trial by his RFI EPDs. 151B ranks 91/1477 for RFI and 114/1477 for RIG! That's even better than his sire, WHAM HAMMER 87W who still pulls in excellent RFI (ranking 305/1477) and RIG (ranking 365/1477) numbers himself. So, here's a way to build savings in the future herd - don't miss out on this long, well-muscled & correct, young bull, with red testicles - 151B.

ULRICH HEREFORD RANCH LONG YEARLINGS



401

AGA 127Y YES SIR BONUS 401B

C03016599 ALNK 401B AUGUST 09 2014

BW:	94
205:	573
'16 EPDs	
CE:	-2.9
BW:	+5.7
WW:	+45.3
YW:	+73.6
MCE:	-0.1
Milk:	+15.7
TM:	+38.4

BCD 140L DOM LAD 326N
C 326N YES I CAN 127Y
 LONE-PINE ICE QUEEN 55T

BP ROBIN HOOD 140L
 BP 146D LADY 30L
 LRD LIBERTY PRINCE 24M
 MHF 9322 ICICLES 16M

AGA 13G GENERAL 114L
AGA 114L MISS GENERAL 118W
 AGA 53A MISS STANDARD ET 152M

GEM GENERAL 13G
 AGA 656U MISS STANDARD ET 17H
 SGC 14X STANDARD LAD 53A
 AGA 22B MISS BRIGADER 511E

(Long Yearling) This fella's a Bonus - yes, Sir! He's got the length of a train, including the caboose! He's muscled well, with good weaning and yearling performance, and he's gaining incredibly now! His sire's confidence, Yes I Can 127Y was a great cross with 118W, a feminine mother with the conformation & fleshing ability we are always seeking. Plus she's got that flat udder with well-placed teats that nursed a 95 lb son to a 105 weaning index, & 4 daughters (avg BW 75 lbs) to avg 107.7 WN indx.



407

AGA 127Y YES SIR BLASTOFF 407B

C03011128 ALNK 407B AUGUST 22 2014

BW:	102
205:	669
'16 EPDs	
CE:	-1.9
BW:	+7.0
WW:	+54.0
YW:	+82.0
MCE:	-0.8
Milk:	+17.9
TM:	+44.9

BCD 140L DOM LAD 326N
C 326N YES I CAN 127Y
 LONE-PINE ICE QUEEN 55T

BP ROBIN HOOD 140L
 BP 146D LADY 30L
 LRD LIBERTY PRINCE 24M
 MHF 9322 ICICLES 16M

AGA 22B BRIGADER 97J
AGA 97J MISS RED EXTRA 237M
 AGA 3G MISS DON DANDY ET 135K

CTY BRIGADER 22B
 AGA 335C MISS EXTRA 8G
 DONORAH 412 DANDY LAD 3G
 SNS GENERATOR'S LADY 21A

(Long Yearling) 207B was a Blastoff bull - with outrageous performance (123 WW & 118 YW indexes) & red testicles. His sire, 127Y, has impressed us with quality & conformation, eye-appeal & that excellent woolly haircoat. Braggin' rights also belong to the elite 14-yr-old dam 237M, who's proven to be fantastic through the years (8 sons indexed avg 110.6 & 2 daughters indexed avg 117 at WN) She's raising another red-eyed, curly-coated calf in our fall program this year! **Retaining semen interest**



412

AGA 203Y GREGORY PETE BOX 412B

C03011233 ALNK 412B AUGUST 31 2014

BW:	79
205:	595
'16 EPDs	
CE:	+5.9
BW:	+0.7
WW:	+46.7
YW:	+75.0
MCE:	+3.4
Milk:	+25.8
TM:	+49.2

UPS DOMINO 3027
GCC PETE 203Y ET
 LPG STANDARD 44B LASS 50H

CL 1 DOMINO 9126J 1ET
 UPS MISS DIAMOND 1353
 96 STANDARD 6A 25E
 LPG COMMANDER 8080 LASS 59D

CTY EASY 705T
AGA 705 MISS EASYGOING 111Y
 AGA 32T MISS BRITISHER 108W

AGA 10S STANDARD 137Y
 COURTNEY LASS J921
 AGA 46E BRITISHER 32T
 AGA 21M MISS STANMORE 126T

(Long Yearling) 412B is a Box for sure - boxed quarters, box hip & wide boxes on loin & muscle mass. A small, attractive head & neck, & tucked-in shoulder ensures easy birthing of little boxes! **Use him on heifers/cows:** 79 lb BW/CE +5.9, BW +0.7, & TM 49.2) then watch the **curve bend** (WN 110 & YR 107 indx). Sire 203Y adds CE, vigour & thickness (CE +6.9, TM +52.2, MARB +0.16 & **Trait Leading BW -2.8, STAY +1.8**). 'Easy calving' dots dam 111Y's pedigree (137Y, 32T, 46E, 21M) plus pure milk/udder. **Retaining semen interest**



413

AGA 127Y YES SIR BANJO 413B

C03011328 ALNK 413B SEPTEMBER 02 2014

BW:	87
205:	514
'16 EPDs	
CE:	-0.9
BW:	+4.2
WW:	+42.3
YW:	+65.6
MCE:	+1.2
Milk:	+14.8
TM:	+36.0

BCD 140L DOM LAD 326N
C 326N YES I CAN 127Y
 LONE-PINE ICE QUEEN 55T

BP ROBIN HOOD 140L
 BP 146D LADY 30L
 LRD LIBERTY PRINCE 24M
 MHF 9322 ICICLES 16M

AGA 70N BRIT DOM 65R
AGA 65R MISS BRIT DOM 129T
 AGA 22B MISS BRIGADER ET 4L

AGA 79H BRIT DOM ET 70N
 AGA 97G MISS HOT SHOT 82J
 CTY BRIGADER 22B
 AGA MISS 80S VOLTAGE ET 14X

(Long Yearling) Here comes lengthy Banjo 213B to play some music and dance to the beat. He holds his small handsome head up, nose to the air, proud of his mostly red eyes, red neck, red testicles and that he's a 127Y son! The dam, 129T, is an attractive feminine female with excellent feet, and a fine flat udder holding up small teats. Her two sons and four daughters all averaged 87 lbs at birth and their index average was above average at weaning.

ULRICH HEREFORD RANCH LONG YEARLINGS



415

AGA 127Y YES SIR BUTCH 415B

C03011486 ALNK 415B SEPTEMBER 07 2014

BW:	87
205:	571
'16 EPDs	
CE:	-1.7
BW:	+5.2
WW:	+52.2
YW:	+79.4
MCE:	+1.7
Milk:	+18.3
TM:	+44.4

BCD 140L DOM LAD 326N
C 326N YES I CAN 127Y
LONE-PINE ICE QUEEN 55T

BP ROBIN HOOD 140L
BP 146D LADY 30L
LRD LIBERTY PRINCE 24M
MHF 9322 ICICLES 16M

AGA 121G STANMORE 20J
AGA 20J MISS STANMORE 70M
AGA 34Z MISS STANDARD 57K

AGA 4016D STANMORE 121G
AGA 40E MISS STANMORE 80G
PDHR 3X HI STANDARD 34Z
AGA 22B MISS BRIGADER 2F

(Long Yearling) There's plenty of testosterone here! Butch 415B wears the wide pants, great loin, muscle and depth that results from a great cross of sire 127Y and our own massively deep 70M cow. She milks rich from flat cups & small teats placed in each of four corners. Here's her score: Birth - 6 sons avg'd 92 lb & 5 heifers avg'd 84 lb ; Weaning - 6 sons avg'd 110.5 indx & 3 heifers avg'd 105.7 indx ; Yearling: 5 sons avg'd 103.4 indx & 2 heifers avg'd 108.5 indx. These are moderate birthweights we like, & the performance we demand!



419

AGA 60W BANNER SPORT BEAT 419B

C03011949 ALNK 419B SEPTEMBER 16 2014

BW:	80
205:	454
'16 EPDs	
CE:	+1.0
BW:	+2.6
WW:	+33.9
YW:	+59.6
MCE:	-0.3
Milk:	+15.6
TM:	+32.6

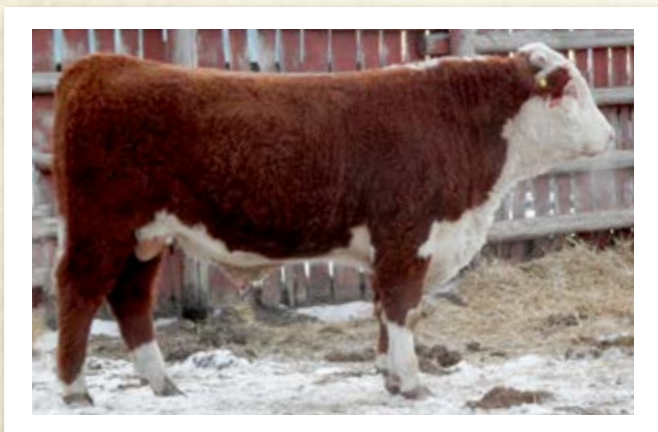
BBSF 6P SPORT 232S
BANNERLANE 232 EXTRA GEN 60W
BANNERLANE GENSTAR LASS 27R

HAWKEYE 75K SKY LAD 6P
BBSF 18H EXTRA LASS 237M
C 80G L SARGENT 78K
BANNERLANE STAN LASS 39M

AGA 35J SILVER PRIDE 207N
AGA 207N MISS SILVER 9R
AGA 53A MISS STANDARD ET 152M

SFL 38E SILVER PRIDE 35J
AGA 33G MISS STANDARD 83J
SGC 14X STANDARD LAD 53A
AGA 22B MISS BRIGADER 511E

(Long Yearling) Feet are such an important part of a bull's anatomy, but there's no need to fret about 419B's specimen! He's got great, powerful feet, with the heels high and tips on solid ground, just like his mother, 9R. She's also proud of her birth records - 3 bull calves have averaged 86 lbs at birth and 7 heifer calves averaged 79 lbs at birth! 419B himself was only 80 lbs and is **made for heifers!** He's got superb pattern and muscling to boot!



422

AGA 60W BANNER SPORT BENZ 422B

C03011952 ALNK 422B SEPTEMBER 18 2014

BW:	75
205:	484
'16 EPDs	
CE:	+0.6
BW:	+2.0
WW:	+36.0
YW:	+60.9
MCE:	+0.5
Milk:	+19.3
TM:	+37.3

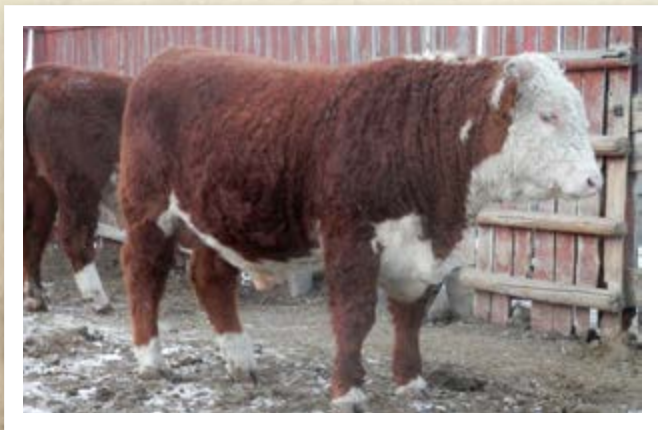
BBSF 6P SPORT 232S
BANNERLANE 232 EXTRA GEN 60W
BANNERLANE GENSTAR LASS 27R

HAWKEYE 75K SKY LAD 6P
BBSF 18H EXTRA LASS 237M
C 80G L SARGENT 78K
BANNERLANE STAN LASS 39M

AGA 13G GENERAL 114L
AGA 114L MISS ULTRA GEN 99U
AGA 22B MISS BRIGADER 511E

GEM GENERAL 13G
AGA 656U MISS STANDARD ET 17H
CTY BRIGADER 22B
AGA MISS 42X STANMORE 94Z

(Long Yearling) There's no doubt about it - Benz 422B can surely be **used on heifers**. He was born 75 lbs, and his small face makes him even more desirable with the heifers. He gets his muscling and correct leg & feet positioning from his deep & thick sire, 60W. The dam, Ultra Gen 99U, is a beautiful feminine cow - with generations of great cattle in her pedigree! She's given birth to 3 sons avg 78 lbs, and 2 daughters avg 77 lbs, and raised them all to index above average at weaning & yearling.



423

AGA 60W BANNER SPORT BEEF 423B

C03011953 ALNK 423B SEPTEMBER 23 2014

BW:	91
205:	669
'16 EPDs	
CE:	+0.6
BW:	+3.2
WW:	+51.3
YW:	+78.9
MCE:	+1.4
Milk:	+22.6
TM:	+48.3

BBSF 6P SPORT 232S
BANNERLANE 232 EXTRA GEN 60W
BANNERLANE GENSTAR LASS 27R

HAWKEYE 75K SKY LAD 6P
BBSF 18H EXTRA LASS 237M
C 80G L SARGENT 78K
BANNERLANE STAN LASS 39M

AGA 20J STANMORE 21M
AGA 21M MISS STANMORE 22T
AGA 207N MISS SILVER 9R

AGA 121G STANMORE 20J
AGA 5C MISS ENERLAD 68K
AGA 35J SILVER PRIDE 207N
AGA 53A MISS STANDARD ET 152M

(Long yearling) 60W sired this thick, deep-bodied, red-eyed, red-testicled bull with tremendous performance throughout, **which can be used on heifers** or cows! His dam is really feminine, full of body, & out of a great 21M daughter. She raised 5 sons avg 90 lb BW & 113.8 WN indx, & 7 heifers avg 74 lb BW & 107.5 WN indx. 423B is bred to sire thick progeny with CE & great maternal strength. He's a 1/2 sib to 67X (Bert Anderson buyer in 2012) who's left top offspring, incl awesome 66B & 83B in this sale. If you're looking for Beef, he's right here!

HERD HEALTH

CLARESHOLM VETERINARY SERVICES, LTD.

Box 2350, Claresholm AB T0L 0T0 (403) 625-3677

K. WRIGHT, DVM C. FANCY, DVM K. VANDERVALK, DVM K. MATTERS, DVM

January 2016

Claresholm Veterinary Services Ltd. has been providing veterinary service and consultation for over 20 years to the Ulrich Hereford Ranch. The majority of the service consists of breeding soundness evaluations of the bulls and herd health consultation.

Health problems are minimized with a good vaccination program and excellent management. Calves are vaccinated with Zoetic Select Vac Gold Vaccine program (the comprehensive program to protect against pneumonia and BVD and IBR viruses) in the

spring and fall. The replacement heifers and bulls receive Bovi-shield Gold FP5-VL5 in the spring before breeding. The cow herd receives Bovi-shield Gold FP5-VL5 prior to calving. Cows and heifers also receive a scour prevention vaccine (Scourbos 9) annually.

Claresholm Veterinary Services Ltd. is proud to be associated with the Ulrich Hereford Ranch and their cattle operation.

Thank You TO OUR SPONSORS!

BUYER'S DRAW SPONSOR:

Paul Christiansen
DVM Industry Specialist
Territory 557
Southern Alberta

Zoetis
#9, 101 Armstrong Place,
Canmore, Ab T1W 3M2
Office: 403 678- 8770
Mobile: 403 332-1556

paul.christiansen@zoetis.com
Visit Us: zoetis.com

zoetis

FOR ANIMALS. FOR HEALTH. FOR YOU.



David Hanneson, CCA, CPA
Branch Manager

p. 403.625.3329
c. 403.336.2959
f. 403.625.4145
david.hanneson@cpsagu.ca
420 - 43rd Avenue E., Box 667
Claresholm, AB T0L 0T0

cpsagu.ca



Co-operative Limited

4424 - 2 Street E.
P.O. Box 8
Claresholm, Alberta T0L 0T0
www..net

SHELLEY O'NEIL
Agent
Claresholm / Nanton Agency
Skyline Petroleum Ltd.

Claresholm: (403) 625-3593
Nanton: (403) 646-2424
Cell: (403) 625-8952
Fax: (403) 625-4791
Home: (403) 625-3059

Dave Thorlakson
Business Development Manager
Dairy/Beef



Landmark Feeds Inc

Phone : (403) 329-3192
Cellular : (403) 308-3820
Fax : (403) 329-8046
Toll Free : (877) 750-2474

3102 - 12th Ave. N.
Lethbridge, AB
Canada T1H 5V1

e-mail: dave.thorlakson@nutreco.ca

ALL-STAR BREEDER

We at Ulrich Herefords are pleased to have been awarded the status of Five-Star Breeder, the highest possible, and 1 of only 42 operations across Canada to do so! This simply means that we have completely & accurately reported 5 traits: Calving Ease, Birthweights, Weaning Weights, Yearling Weights and Ultrasound on our entire calf crop.

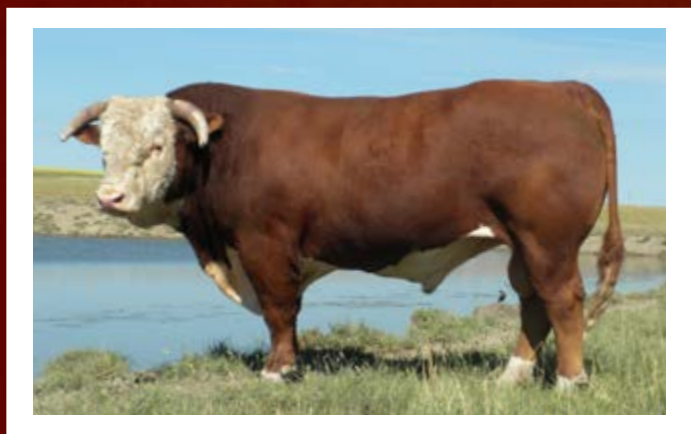


[illegible]

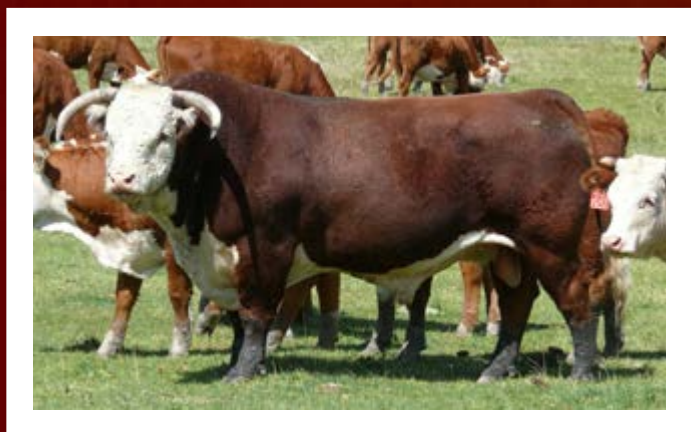
ULRICH HEREFORD RANCH REFERENCE SIRES



YV 915W MR RISING STAR 94Y
Reference Sire K



C 326N YES I CAN 127Y
Reference Sire L



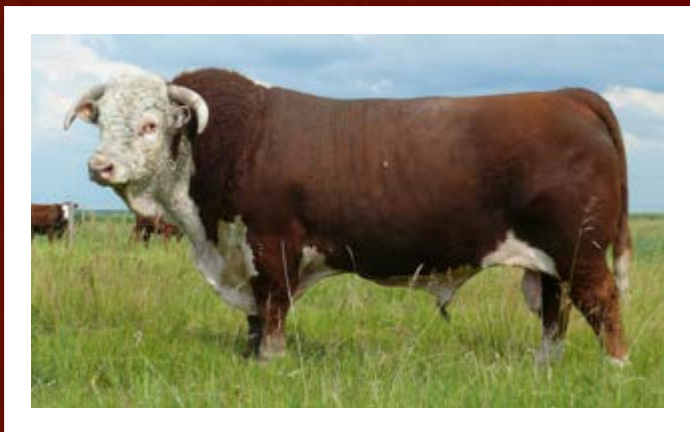
GCC PETE 203Y ET
Reference Sire M



AGA 18Y ZOOM STANDARD 18Z
Reference Sire N



AGA 60W BANNER SPORT ZEAL 28Z
Reference Sire O



AGA 26R WHAM HAMMER 87W
Reference Sire P

CATALOGUE CAN BE VIEWED ONLINE AT:

www.ulrichherefords.com
or www.coyotepub.com

ULRICH HEREFORD RANCH INC.

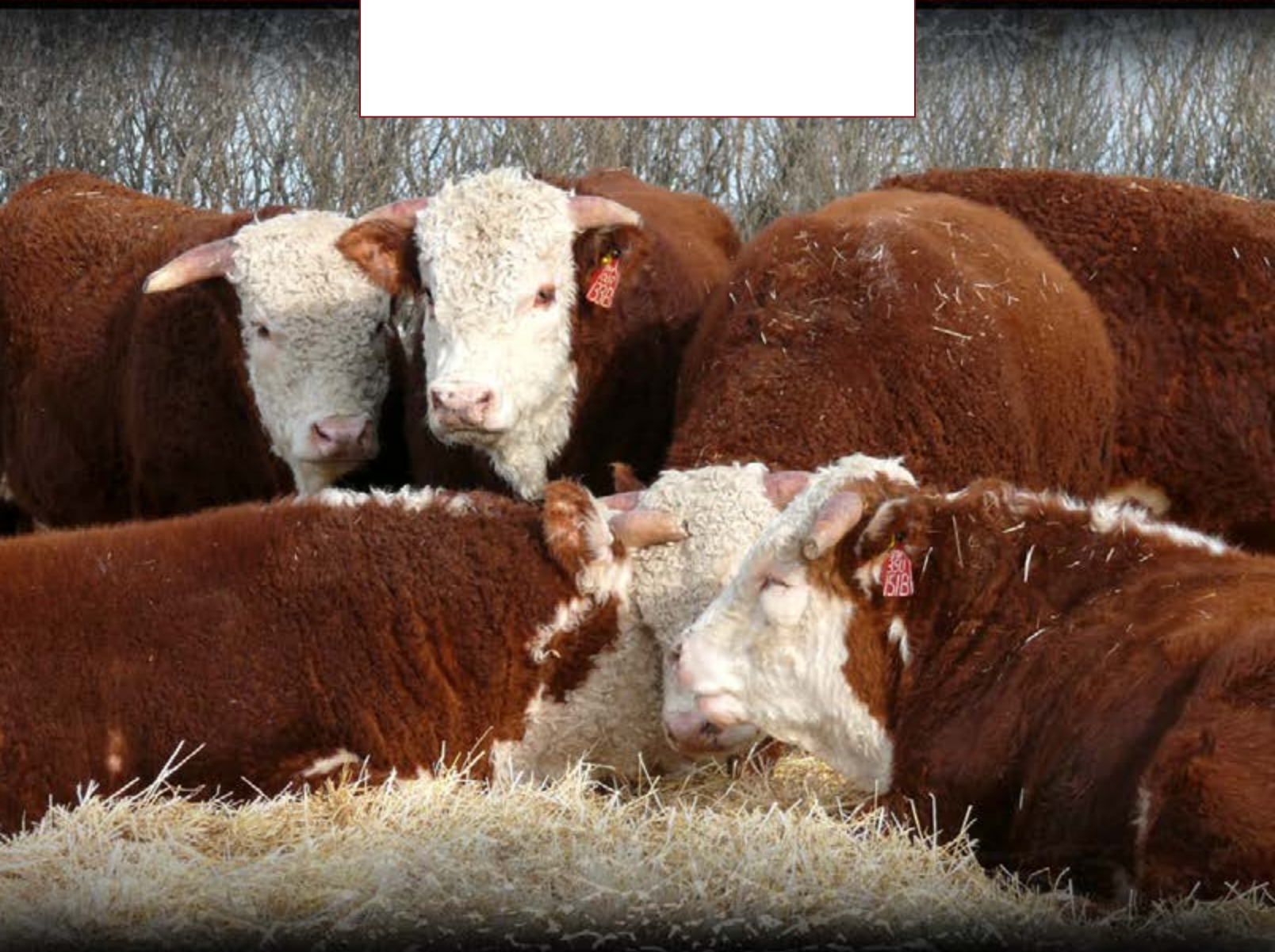
Box 843, Claresholm, AB T0L 0T0

CANADA POSTES
POST CANADA



Postage paid
Addressed
Admail
9260625

Port payé
Médiaposte
avec adresse



WWW.ULRICHHEREFORDS.COM

PRINTED IN CANADA / FOR FREE DISTRIBUTION