

9TH ANNUAL ULRICH HEREFORDS

45 Registered 2 Year Old & Long Yearling Bulls

Bull Sale



Lot 11



Lot 19



Lot 39



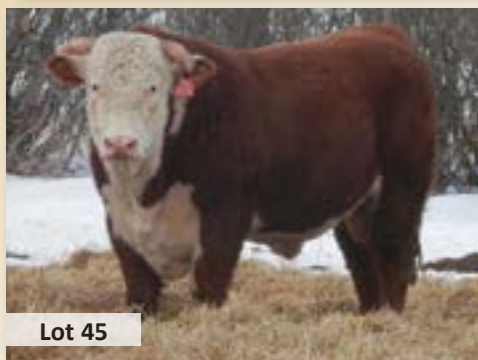
Lot 313



2015 TUESDAY
FEBRUARY
24 **1:00PM MST**
BALOG AUCTION
LETHBRIDGE

Specializing in **LIGHT BIRTHWEIGHTS** *with* **GREAT PERFORMANCE**
plus **REMARKABLE COWS**

ULRICH HEREFORDS BULL SALE 2015





9th Annual
ULRICH HEREFORDS
BULL SALE

45 HEAD ON OFFER!

45 Coming Two & Long Yearling Hereford Bulls

FEBRUARY
24

BALOG AUCTION • LETHBRIDGE, ALBERTA

Sale Time: 1:00 pm (MST) Join us for Lunch: 11:30 a.m.

SALE DAY PHONES:

Balog Auction - 403-320-1980

Peter's Cell - 403-625-1036 Hans Cell - 403-625-6629

SALE STAFF:

Bob Balog..... Auctioneer..... 403-320-1980

Brad Dubeau..... Ring Staff..... 403-512-2235

Louis Balog..... Ring Staff..... 403-320-1980

ACCOMMODATIONS:

Ramada Inn..... 403-380-5050

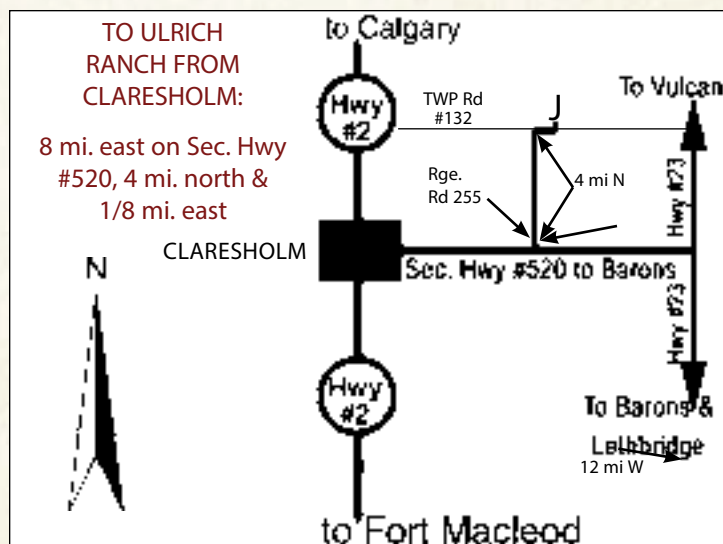
2375 Mayor Magrath Drive S. - mention Balog Auction for special room rate

VIEWING THE BULLS:

We welcome you to stop by the ranch any time prior to Sale Day to view our operation and see the bulls.

PLEASE JOIN US EARLY SALE DAY:

For presale viewing followed by lunch at 11:30 a.m.



ULRICH HEREFORD RANCH INC.

Box 843, Claresholm, AB T0L 0T0

Peter Ulrich - Cell: 403-625-1036

Phone: 403-625-2434 Fax: 625-2399

Email: peter@ulrichherefords.com

Hans & Annette Ulrich - Ph: 403-625-2237

Can't make it to the sale?
Internet Bidding Available.

To view this sale visit www.dlms.ca. Fill out the registration form located under registration and sign-up for your free user account and select a username and password.

BIDDERS - To be approved as a bidder, Log in to dlms.ca and click BUYER APPROVAL tab, select the sale you are interested in bidding at and click sign up.

For more information

Call DLMS Reps:

Whitney Bosovich 780.991-3025

Mark Shologan 780.699.5082

DLMS
www.dlms.ca

SPECIAL POINTS TO NOTE:

- **No bulls sell at Calgary or Medicine Hat - All of our best are in this sale!**
- All bulls are semen tested before sale
- **Credit of \$100** per bull to purchasers who take bulls from the sale.
- **Delivery:** Delivery to central points in Alberta at seller's convenience. Out of province purchases delivered by commercial hauler at shared cost.
- We strongly recommend that bulls be insured - an insurance agent will be available at the sale.
- **Flying In?** If flying into the Lethbridge Airport, call Balog Auction for pick-up: 1-403-320-1980.
- **Ultrasound Information** has been collected on these bulls as yearlings and will be available sale day or can be obtained prior to the sale by calling Peter at 403-625-1036. **Complete EPDs** (beyond those shown in this catalogue) are also available.
- **Sight Unseen Purchase Plan:** If you are unable to attend the sale, please contact us or any of the sale staff with instructions to purchase on your behalf.

WELCOME to

ULRICH HEREFORD RANCH

9TH ANNUAL BULL SALE



Peter Ulrich
Cell: 403-625-1036

Wow, what a year to be in the cattle business! It seems like all those tough years are finally paying off! We've always known our cattle were worth top dollar and it's nice that the markets are finally reflecting this...

It's been a pretty good year at Ulrich Hereford Ranch. The grass was good, the silage was good, and the coming two-year-old bulls have really come along nicely. The breeding bulls and mother cows used in our "Specializing in Light Birthweights with Great Performance, plus Remarkable Cows" program are doing their job, and we are confident these sale bulls will continue to do the same for you!



Hans & Annette Ulrich

PH: 403-625- 2237

Once again, it's been exciting to be involved in the Canadian Hereford Association's Feed Efficiency trial in which 2015 will wrap up the testing of 900+ bulls over the course of 3 years at Olds College, Olds AB and Cattleland at Strathmore, AB. The trial determines the amount of feed actually consumed using GrowSafe bunks and the goal is to produce EPDs to select more feed efficient cattle, thus enabling all cattlemen to reduce feed costs. The CHA has released some preliminary RFI EPDs and we were pleased with the ranking of our bulls, and of course with having #1! (see Lot 28A) The vast majority of our test bulls were above the average too!

Feb 24th will see 39 two-year-olds and 6 long yearlings in the sale ring. They are raised on milk & grass here - au naturel!

You won't find any creep feeders on our pastures - these cattle have to work on their own genetic merits! The yearlings spend all summer on grass, and then in fall the bulls are fed a high roughage diet consisting of hay, barley silage and Landmark Feed's "Bull's Eye" backgrounding pellets, designed for growing animals. We have chosen to follow a non-medicated program, to grow out, not push these youngsters - preparing them for their real work in the spring.

We faithfully report performance data and ultrasound scans at yearling and are pleased once again to be rated a 5-Star breeder by the CHA. It's unfortunate that some of the EPDs seem to frown on our choice to cross working bulls from the old days with the improved genetics of today, but quality is the goal and we're confident these animals today are meeting that goal. Of course, all bulls are semen tested and those results along with scrotal measurements will be available on sale day.

The support and friendship of our comrades in the cattle business are much appreciated and we look forward to seeing you Sale Day!

Sincerely,
Peter Ulrich
Hans & Annette Ulrich

TERMS & CONDITIONS

TERMS - The terms of the sale are cash or cheque payable at par at Lethbridge, AB, on Sale Day. The right of property shall not pass until settlement is made. All settlements must be made with the clerks of the sale before any cattle will be released. For US export, USDA and individual state rules will apply.

BIDS - Every animal entering the sale ring will be sold to the highest bidder. A floor price will apply to each animal consigned.

DISPUTES - In case of disputes, bidding will be reopened between the parties involved. If no further bid is made, the buyer will be the person from whom the auctioneer accepted the last bid. The auctioneer's decision in such matters will be final.

PURCHASER'S RISK - Each animal becomes the risk of the purchaser as soon as sold.

ANNOUNCEMENTS - Errors discovered in the catalogue will be corrected by announcements from the Auction Stand at sale time and such corrections will take precedence over the printed matter in the catalogue.

CERTIFICATE OF REGISTRY - A certificate of registry duly transferred will be furnished to the buyer for each animal after settlement is made.

SHIPPING - Assistance will be given in making shipment after the sale, but no risk is assumed by Balog Auction, or the seller. **Delivery to central points in Alberta will be made at seller's convenience. Out-of-province purchases will be delivered by commercial hauler at shared cost.** Any additional expenses are the responsibility of the buyer, including duty, brokerage fees, etc.

BREEDER'S GUARANTEE - The consignors have done everything possible to assure you, the buyer, that every bull in this sale will be a breeder. A certified veterinarian has semen tested and physically evaluated every bull. However, should a problem arise, please inform the seller so further arrangements may be made.

ACCIDENTS - Although every precaution will be taken to protect the safety and comfort of buyers, neither the sales manager, auctioneer nor any owner assumes any responsibility in this matter and disclaims any liability, legal or otherwise, in the event of accident or loss of property.

LIABILITY - Balog Auction is acting as agent only and assumes no responsibility for representations made by the seller. Purchasers must look to the seller for fulfillment of all guarantees and representations made hereunder.

SPECIAL POINTS to REMEMBER:

- No creep feed
- No hormones or medicated feed!
- Backgrounded, not pushed!

KEY TO PERFORMANCE TERMS USED HEREIN:

BW: Actual Birth Weight in Pounds

205: Weaning Weight in lbs adjusted to 205 Days

365: Yearling Weight in lbs adjusted to 365 Days

PLEASE NOTE

Pictures of the dams of many of the sale bulls, as well as updated sale information and a downloadable version of this catalogue in full color is available at our website:

www.ulrichherefords.com

ULRICH HEREFORD RANCH REFERENCE SIRES



AGA 46E BRITISHER ET 2U



AGA 705 EASYGOING EXPRESS



GCC PETE 203Y ET



AGA 13G GENERAL 114L



CTY EASY 705T



CFH 2W HL LAD 131Y

Catalogue can be viewed online at:
www.ulrichherefords.com
or **www.coyotepub.com**

ULRICH HEREFORD RANCH REFERENCE SIREs

A

AGA 13G GENERAL 114L

C02795506 ALNK 114L FEBRUARY 22 2001

BW:	94
205:	687
365:	1207
'15 EPDs	
CE:	-5.2
BW:	+7.2
WW:	+44.0
YW:	+79.8
MCE:	+0.8
Milk:	+22.8
TM:	+44.8

GENERATOR STANDARD 10A
GEM GENERAL 13G
AD 75N LASS 31W

STANDRD LAD 656 4ET
AGA 656U MISS STANDARD ET 17H
AGA MISS 80S VOLTAGE ET 14X

SNS GENERATOR 28X
MISS 417 STAN SUPERB 7Y
MF STANDARD LAD 75N
COMMANDER LASS 14T
HI STANDARD LAD 20P
BELL L 60H DOMINO LASS 82K
LCI ET HIGH VOLTAGE 80S
MISS 51K BRITISHER AGA 61N

Top % of Breed for: SC 1%, STAY 10%, MPI 30%
Our Stayability Trait Leader was named the S AB Bull Spectacular "People's Choice" winner in '02. His progeny have also won the same award & other honours. 114L's dam was a "Dam of Distinction" out of a "Dam of Great Distinction" out of our great foundation cow, 61N! 114L's females are incredible – femininity with thickness, volume, sound feet & easy keeping. Stunning good looks plus heavy WN & YR wts , keeps 114L on top. **Lots 58A, 72A, & 116A**



AGA 656U MISS STANDARD ET 17H
DAM OF AGA 13G GENERAL 114L

B

96 ANDY 72S

C02887424 CHB 72S APRIL 16 2006

BW:	96
205:	865
365:	--
'15 EPDs	
CE:	-0.6
BW:	+3.6
WW:	+55.1
YW:	+73.2
MCE:	-1.5
Milk:	+17.1
TM:	+44.7

96 ANDY 81F
96 ANDY 7L
96 HANNA 9J

DUNN'S 02C LAD 14E
96 EVE 18N
96 LADY 56E

96 STANDARD ADVANCE 81N
96 LADY 48D
HH HOME BUILDER 603
96 STANDARD LASS 24E
DUNN'S 10Y LAD 02C
DUNN'S SPARTAN LADY 28C
96 LANDMARK 50A
96 PRISCILLA ET 10B

Top % of Breed for: WW 20%, MPI 30%
I purchased some 96 ANDY 72S semen from Bert Anderson of Sceptre, SK but unfortunately the bull died before we could picture him. I did see most of his daughters and they are terrific cows. His progeny are born with moderate birthweights (6 hfrs avg'd 85 lbs and 10 bulls avg'd 86 lbs at birth- all unassisted) The bulls are uniform and powerfully built. See for yourself - **Lots 3A, 7A, 19A, 21A, 39A, 61A & 73A**

C

CTY EASY 705T

C02937185 705 APRIL 09 2007

BW:	--
205:	--
365:	--
'15 EPDs	
CE:	+2.5
BW:	+4.1
WW:	+39.0
YW:	+61.8
MCE:	-0.3
Milk:	+16.9
TM:	+36.4

SJSL HI 20 STAND LAD 10S
AGA 10S STANDARD 137Y
GU MISS 46E BRITISHER 10K

SNS SUPER SILVER 35D
COURTNEY LASS J921
COURTNEY LASS E522

HI STANDARD LAD 20P
STANDARD L1 LASS 10G
DP BRITISHER AGA 46E
GU MISS 50Y 97F
SNS SILVER PRAIRIE 50B
SNS 112N SUPER GIRL 26Y
LCI YOUNG RANGER 91B
COURTNEY LASS C322

Top % of Breed for: CE 30%
705 is leaving us very impressive offspring. His sire, 137Y, was raised on our ranch & is now an AHA trait leader for Calving Ease, BW, Milk, MCW, & CEZ Indx. 137Y bred cows well into his teen years and his daughters and granddaughters are producing exceptionally well (just give us a call). 705 is continuing that reputation for us (heifers calve EASY), his sons are excellent like the set offered in this sale: **Lots 28A, 32A, 68A, 81A, 84A, 117A, 121A, 129A, & 134A**

D

AGA 46E BRITISHER ET 2U

C02925141 ALNK 2U FEBRUARY 15 2008

BW:	104
205:	817
365:	1105
'15 EPDs	
CE:	+4.0
BW:	+2.1
WW:	+28.7
YW:	+40.2
MCE:	-1.3
Milk:	+12.6
TM:	+27.0

DOMINO STANDARD DP LAD 45
DP BRITISHER AGA 46E
BRITISHER WETMORE LADY AGA 5A

CTY BRIGADIER 22B
AGA 22B MISS BRIGADIER 511E
AGA MISS 42X STANMORE 94Z

RIBSTONE DOMINO LAD 1G
STANDARD E DOMINO 33R
JH REAL BRITISHER
DOUBLE MISS WETMORE AGA 61W
BAR PIPE BRIGADIER 19Y
LADY 66J B DOM 509
AGA 30S STANMORE 42X
JRC 31R LASS 37U

Top % of Breed for: CE 15%, BW 25%, MARB 30%
This 2008 weaning/yearling performance leader also delivers Calving Ease, thanks to his sire 46E – a "one of a kind" bull who produced light birthweights, great performance & awesome cows 40 yrs ago. Now bulls like 46E are being rejuvenated & progeny have created better cattle! 2U's dam, 511E, was a step ahead in bringing finer offspring to the breed. Impressive 2U builds wide topped, thick, deep, & long progeny. **Lots 4A, 6A, 13A, 89A, 97A, 106A, 110A, & 125A**

E

AGA 77J SUPER URANIUM 47U

C02914621 ALNK 47U MARCH 15 2008

BW:	100
205:	787
365:	1058
'15 EPDs	
CE:	+2.0
BW:	+2.8
WW:	+38.8
YW:	+66.0
MCE:	+0.7
Milk:	+17.0
TM:	+36.4

FE 07Y SUPER 129D
CC 129D SUPERMAN 77J
CC 42W JULIANA 66Z

AGA 1S OLD DOMINO 44K
AGA 44K MISS OLD DOMINO 252M
AGA 102E MISS EXTRA 190K

JDA 15W SKYWALKER 07Y
FE 412 DANDY 56X
DMF 81N STANDARD 42W
CC ARROW BRITISHER LASS 47T
HU WETMORE DOMINO 1S
AGA 656U MISS STANDARD ET 17H
FE 27A EXTRA 102E
AGA 189C MISS DOMINO 22F

Top % of Breed for: STAY 30%, FMI 10%,
White Lake Colony purchased 47U in the 2010 sale while I used him with good success in the 2012 fall program. This bull was deep and thick with massive quarters and immaculate feet. His calves were born vigorous: 6 females averaging 74 lbs (avg index 116) and 3 males averaging 70 lbs (avg index 121) and of course all were unassisted. **Lot 301A.**

F

BANNERLANE 232 EXTRA GEN 60W

C02933072 ARNL 60W APRIL 02 2009

BW:	86
205:	--
365:	--
'15 EPDs	
CE:	-0.7
BW:	+3.7
WW:	+44.3
YW:	+68.0
MCE:	+0.8
Milk:	+20.0
TM:	+42.2

HAWKEYE 75K SKY LAD 6P
BBSF 6P SPORT 232S
BBSF 18H EXTRA LASS 237M

C 80G L SARGENT 78K
BANNERLANE GENSTAR LASS 27R
BANNERLANE STAN LASS 39M

SNS 67F SKY LAD 75K
VEDAN 106G SUPER LASS 119L
LPG EXTRA LAD 18H
BP STAR LADY 132E
C 18C GENERAL D LAD 80G
BAR-N COUNTESS ET 614F
BANNERLANE 18C STD LAD 95G
BANNERLANE VIRGINIA 32D

Top % of Breed for: STAY 20%, MARB 30%
Sired by Sport 232S, a great bull from the Bannermans, this 60W has left us some impressive offspring that have excelled with deep & natural thickness, extra wide tops and responsible birthweights accompanied by quick vigour and immediate growth. The pounds go on – the performance is there! We used one of his sons with plenty of pigment, 28Z, in our own herd. Yes, 60W sets the bar extremely high for progeny of both sexes! **Lots 11A & 140A**

G

AGA 705 EASYGOING EXPRESS 67X

C02945701 ALNK 67X MARCH 20 2010

BW:	89
205:	706
365:	1032
'15 EPDs	
CE:	+1.7
BW:	+3.3
WW:	+45.1
YW:	+65.5
MCE:	+0.6
Milk:	+20.7
TM:	+43.3

AGA 10S STANDARD 137Y
CTY EASY 705T
COURTNEY LASS J921

AGA 20J STANMORE 21M
AGA 21M MISS STANMORE 22T
AGA 207N MISS SILVER 9R

SJSL HI 20 STAND LAD 10S
GU MISS 46E BRITISHER 10K
SNS SUPER SILVER 35D
COURTNEY LASS E522
AGA 121G STANMORE 20J
AGA 5C MISS ENERLAD 68K
AGA 35J SILVER PRIDE 207N
AGA 53A MISS STANDARD ET 152M

Top % of Breed for: MARB 20%
Goggle-eyed, & red to the toes with pigmented feet, this was a stout son of 705! Extra thick in his butt and over the top, he was an impressive bull. He held his head up, bright & alert but was calm as a house kitten. Great doing ability was evident, and great carcass numbers concurred (3rd in Ribeye, and 128 idx Marb!) The dam brought 21M light birthweight genetics and provided rich, rich milk from a great udder. 67X is also co-owned with Bert Anderson. **Lot 25A.**

ULRICH HEREFORD RANCH REFERENCE SIREs

H

AGA 47F DOMINO ET 2Y

C02971471 ALNK 2Y FEBRUARY 02 2011

BW:	75
205:	580
365:	883
'15 EPDs	
CE:	+6.8
BW:	-2.6
WW:	+19.3
YW:	+41.4
MCE:	-0.1
Milk:	+16.0
TM:	+25.7

DOUBLE MO LE 12B
MR MO LE 47F
D STANDARD LASS 88B

CTY BRIGADER 22B
AGA 22B MISS BRIGADER 511E
AGA MISS 42X STANMORE 94Z

DOMINO D P LAD
DOMINO MIXER MO LE 19V
DOMINO STANDARD DP LAD 45
PRINCESS MAGGIE 39V
BAR PIPE BRIGADIER 19Y
LADY 66J B DOM 509
AGA 30S STANMORE 42X
JRC 31R LASS 37U

Top % of Breed for: CE 2%, BW 1%, STAY 3%
2Y was a great heifer bull for us, and produced outstanding females. His excellent dam, 511E, created many excellent sons down through the years. The sire of 2Y was Fred Peacock's 47F with a rich history of many great offspring whose feet & udders stood up to the longevity of this papa and mama. **Lot 115A**



AGA 22B MISS BRIGADER 511E
DAM OF AGA 47F DOMINO ET 2Y & AGA 46E BRITISHER ET 2U

I

C 326N YES I CAN 127Y

C02955238 C 127Y JANUARY 11 2011

BW:	92
205:	792
365:	1181
'15 EPDs	
CE:	-2.3
BW:	+5.3
WW:	+53.5
YW:	+79.9
MCE:	+1.6
Milk:	+11.1
TM:	+37.9

BP ROBIN HOOD 140L
BCD 140L DOM LAD 326N
BP 146D LADY 30L

LRD LIBERTY PRINCE 24M
LONE-PINE ICE QUEEN 55T
MHF 9322 ICICLES 16M

HR ROBIN HOOD ET 300H
BP LADY MASTERPIECE 293C
BP SANDMAN 146D
BP DIAMOND LADY 79G
LRD FREEDOM ET 66K
LRD MISS LAREDO 28H
MHF F12 ICE 21K
LCE Z32 LIZA ET 78K

Top % of Breed for: WW 30%, SC 30%
Yes 127Y has extra length and thickness, bone and muscle and his offspring carry enormous depth of rib and great quarter that is so necessary in today's beef industry. **Lots: 307A, 313A, 315A, 317A & 321A**

J

CFH 2W HL LAD 131Y

C02960680 TLS 131Y MARCH 09 2011

BW:	108
205:	790
365:	1047
'15 EPDs	
CE:	+1.2
BW:	+7.4
WW:	+51.8
YW:	+84.9
MCE:	+1.2
Milk:	+28.9
TM:	+54.8

MHH 011H BRIT LAD 46R
LPG HERMAN LORD LAD 2W
LPG LANDLORD G44B LASS 50S

K 64H RIBSTONE LAD 157K
CFH 157K MISS HI TECH 309N
CFH 33B MISS HIGH TECH 114L

MN 26E SIL BRITISH 011H
MHH 262B HI-VOLTAGE LASS 8G
BCD 59J LANDLORD 114L
LPG COMMANDER 8080 LASS 59D

STANDARD 16E RIBSTONE 64H
K 61Z SUPER LADY 41G
BP GOVERNOR 33B
CFH HIGH TECH BRIT LASS 027Z

Top % of Breed for: MILK 10%, TM 15%, SC 15%, MPI 10%, FMI 15%, MARB 20%
We purchased this Conway bull as a calf at their dispersal sale. He's been breeding solid offspring with impressive EPDs in both Weaning and Yearling, as well as Milk and Total Maternal and Marbling (+0.15). Floyd & Darryl Anderson now also co-own this bull. **Lot 69A, 85A, 87A, & 126A**

K

GCC PETE 203Y ET

C02978686 203Y FEBRUARY 03 2011

BW:	--
205:	--
365:	--
'15 EPDs	
CE:	+8.5
BW:	-3.7
WW:	+37.9
YW:	+62.8
MCE:	+5.8
Milk:	+32.8
TM:	+51.8

CL 1 DOMINO 9126J 1ET
UPS DOMINO 3027
UPS MISS DIAMOND 1353

96 STANDARD 6A 25E
LPG STANDARD 44B LASS 50H
LPG COMMANDER 8080 LASS 59D

HH ADVANCE 767G 1ET
CL 1 DOMINETTE 490
SH DIAMOND 881
UPS MS MILEHIGH 8330
BP BRIGADIER 42B
96 SANDY ET 6A
LPG COMMANDER 44B
LPG 8080 LASS 21A

Top % of Breed for: CE 1%, BW 1%, MILK 2%, TM 25%, MCE 1%, SC 20%, STAY 1%, MPI 10%, MARB 30%

Stout, stout & stout stacked on top of Calving Ease (+8.5 EPD) and BW (-3.7 EPD), plus plenty of Marbling thrown in for good measure (+0.12 EPD). A look at his Birth Average report for 2013, summarizes 14 females born averaging 69 lbs and 4 males born averaging 76 lbs (all avg index 115 and all unassisted). All these youngsters display that vigour that Pete stamps on newborn calves! **Lots 10A, 45A, & 74A**

WHAT IS AN EPD?

Expected Progeny Differences (EPDs) are genetic predictions producers can use when making selection decisions. These values are available on performance animals from breed associations. *It is important to understand you cannot compare EPDs between breeds, only within a breed.* A buyer is always advised to use more than just the EPDs regardless of accuracy when making purchase decisions.

An Expected Progeny Difference (EPD) is a measure of the genetic merit of an animal using relevant performance and pedigree information. EPDs are expressed in the units of measure. For example, birth weight is expressed in pounds, and rib-eye area is expressed in square inches.

EPDs come from performance data. Producers submit data on their cattle. From this data, researchers look at the differences between animals raised in the same environment (contemporary groups) and ascertain the portion of that difference that is due to genetics (heritability). Also included in this is how the different traits relate to each other and interact together (correlations). They can then directly compare genetic differences among animals using the pedigree information contained in the CHA and AHA registries. The result is a value that can be directly compared between animals and across environments, an EPD.

EPD'S USED IN THIS CATALOGUE

Calving Ease EPD (CE) - calculated using birth weight and calving ease score information. Calving ease EPDs represent the ease with which progeny of an animal are born to first calf heifers. The EPD is expressed as a percent probability, with a higher value representing calves with a higher probability of being born unassisted.

Birth Weight EPD (BW) - is an indicator of calving ease. Higher birth weight EPDs usually indicates more calving difficulty.

Weaning Weight EPD (WW) - reflects progeny growth differences up to 205-days.

Yearling Weight EPD (YW) - reflects progeny growth differences through to 365-days.

Milk EPD (Milk) - indicates the ability of a sire's daughters to provide their calves with an environment that encourages growth from birth to weaning, through mothering ability and milk production. This EPD is expressed in the expected difference in pounds of calf at weaning.

Total Maternal EPD (TM) - also known as Milk + Growth, this EPD combines the milk EPD plus 1/2 the Weaning Weight EPD. It is expressed in pounds of calf weaned at 205-Days and combines the genetics for pre-weaning growth and the influence of the maternal environment on the weaning weight of the daughter's progeny.

Maternal Calving Ease EPD (MCE) - represents the ease with which a sire's daughters will calve as first calf heifers, when compared to daughters of other sires. The EPD is expressed as a percent probability, with a higher value representing daughters with a higher probability of unassisted calving. *(important to understand is that zero is not "average")*

COMPARABILITY OF EPD'S

Hereford Breed Averages EPDs for Calves born from 2013 to 2014	CE	BW	WW	YW	MCE	Milk	TM
	1.0	3.3	48.0	78.0	1.3	20.0	44.0

EPDs from Hereford animals are directly comparable to other Herefords in North America *and parts of South America*, due to the inclusion of data from Canada, United States, Uruguay & Argentina. As well, it is important to remember that Hereford EPDs are NOT directly comparable to EPDs produced by different breeds, such as Angus or Simmental.

3

AGA 72S BERT'S ANDY 3A

C02986370 ALNK 3A MARCH 15 2013

BW:	96
205:	560
'15 EPDs	
CE:	-1.1
BW:	+5.3
WW:	+47.5
YW:	+70.3
MCE:	-0.8
Milk:	+14.6
TM:	+38.4

96 ANDY 7L
96 ANDY 72S
96 EVE 18N

96 ANDY 81F
96 HANNA 9J
DUNN'S 02C LAD 14E
96 LADY 56E

LLL 85A STANDARD 93D
AGA 93D MISS STANDARD ET 41R
AGA MISS 80S VOLTAGE ET 14X

LLL FE STD BRIT 85A
LLL 81R STD BRIT LASS 77W
LCI ET HIGH VOLTAGE 80S
MISS 51K BRITISHER AGA 61N

A son of the Bert Anderson bull, 96 ANDY 72S, this bull is long and well-marked. The dam, 41R, descends from two great bulls, LLL 85A STANDARD 93D and LLL FE STD BRIT 85A, plus her grandmother (14X) is a Dam of Great Distinction!

10

AGA 203Y GREGORY PETE 10A

C02986501 ALNK 10A MARCH 18 2013

BW:	80
205:	665
'15 EPDs	
CE:	+3.1
BW:	+1.7
WW:	+48.2
YW:	+77.4
MCE:	+2.5
Milk:	+29.6
TM:	+53.7

UPS DOMINO 3027
GCC PETE 203Y ET
LPG STANDARD 44B LASS 50H

CL 1 DOMINO 9126J 1ET
UPS MISS DIAMOND 1353
96 STANDARD 6A 25E
LPG COMMANDER 8080 LASS 59D
LCI 157K RIBSTONE 4P
AGA 101J MISS STANDARD 140P
STANDRD LAD 656 4ET
AGA 22B MISS BRIGADER 511E

Top % of Breed for: CE 20%, BW 20%, MILK 10%, TM 15%, MCE 25%, SC 15%, MPI 20% FMI 20%, Ranked 228 / 918 published RFI EPDs

An exceptionally good lad from 203Y, 10A started with a light BW, piled on good WW (117 Indx) and kept on gaining through YW... keeping that flesh all summer. Inside: Excellent BW EPDs (1.7), CE EPD (3.1), TM (53.7) and MPI (152.8) and FMI (139); Outside: Well-pigmented, well-marked, correct with excellent bone & thickness, stout, all covered by excellent mossy hair! **Heifer bull! Retaining semen interest.**

4

AGA 2U BRITISHER AXE 4A

C02986087 ALNK 4A MARCH 15 2013

BW:	88
205:	606
'15 EPDs	
CE:	+2.3
BW:	+3.2
WW:	+35.1
YW:	+57.4
MCE:	+0.6
Milk:	+21.6
TM:	+39.2

DP BRITISHER AGA 46E
AGA 46E BRITISHER ET 2U
AGA 22B MISS BRIGADER 511E

DOMINO STANDARD DP LAD 45
BRITISHER WETMORE LADY AGA 5A
CTY BRIGADER 22B
AGA MISS 42X STANMORE 94Z

AGA 20J STANMORE 21M
AGA 21M MISS STANMORE 100R
AGA 13G MISS GENERAL 249N

AGA 121G STANMORE 20J
AGA 5C MISS ENERLAD 68K
GEM GENERAL 13G
AGA 656U MISS STANDARD ET 17H

Top % of Breed for:
CE 30% STAY 20% Ranked 262 / 918 published RFI EPDs
This bull was born to a mother who confidently delivers exceptionally good offspring with great performance at weaning and yearling year after year. He's a well-marked, thick son of 2U - alert and ready to work! You will want to make room for this Axe in your tool shed!

11

AGA 60W BANNER SPORT 11A

C02986573 ALNK 11A MARCH 19 2013

BW:	83
205:	621
'15 EPDs	
CE:	-0.9
BW:	+4.6
WW:	+47.4
YW:	+66.8
MCE:	+0.9
Milk:	+21.3
TM:	+45.0

BBSF 6P SPORT 232S
BANNERLANE 232 EXTRA GEN 60W
BANNERLANE GENSTAR LASS 27R

HAWKEYE 75K SKY LAD 6P
BBSF 18H EXTRA LASS 237M
C 80G L SARGENT 78K
BANNERLANE STAN LASS 39M
MHH 011H BRIT LAD 46R
LPG LANDLORD G44B LASS 50S
LCI 157K RIBSTONE 91N
CFH 108L QUIGLEY LASS 447P

Top % of Breed for:
MPI 30%, REA 30%, MARB 30% Ranked 351 / 918 published RFI EPDs
Here's a great bull with long, great quarters and tremendous loin, and good red to boot! Note the 83 lb BW, 110 WN index, and REA EPD of .40 and MARB EPD of .12! He was our top-ranking Marbler plus Yields 65.2 Balanced in every way, he even ranked well above average in RFI & RIG. Credit is due his sire 60W, a great individual with his own ultrasound, EPDs, birthweight, performance, and eye-appeal qualities.

6

AGA 2U BRITISHER 6A

C02986090 ALNK 6A MARCH 17 2013

BW:	92
205:	525
'15 EPDs	
CE:	-0.2
BW:	+5.2
WW:	+35.4
YW:	+62.1
MCE:	-0.9
Milk:	+15.5
TM:	+33.2

DP BRITISHER AGA 46E
AGA 46E BRITISHER ET 2U
AGA 22B MISS BRIGADER 511E

DOMINO STANDARD DP LAD 45
BRITISHER WETMORE LADY AGA 5A
CTY BRIGADER 22B
AGA MISS 42X STANMORE 94Z

CTY EASY 705T
AGA 705 MISS EASYGOING 915W
AGA 53L MISS RED DOMINO 98R

AGA 10S STANDARD 137Y
COURTNEY LASS J921
AGA 22B BRIGADER 53L
AGA 91L MISS STANDARD 164N

2U, crossed with the dam 915W, created 6A which is sure to produce great females. 915W's paternal grandsire, 137Y, was known for expressing his maternal strengths, longevity, pigment and light birthweights Add good ultrasound (marbling and yield) and here's a well-marked, pigmented bull made to order!

13

AGA 2U BRITISHER 13A

C02986647 ALNK 13A MARCH 20 2013

BW:	81
205:	558
'15 EPDs	
CE:	+0.3
BW:	+3.2
WW:	+38.1
YW:	+62.4
MCE:	-0.2
Milk:	+14.7
TM:	+33.8

DP BRITISHER AGA 46E
AGA 46E BRITISHER ET 2U
AGA 22B MISS BRIGADER 511E

DOMINO STANDARD DP LAD 45
BRITISHER WETMORE LADY AGA 5A
CTY BRIGADER 22B
AGA MISS 42X STANMORE 94Z

CC 77J JARROD 26T
AGA 26T MISS JARROD EXCITE 13X
AGA 53L MISS RED DOMINO 80S

CC 129D SUPERMAN 77J
CC 14N JOCELYN 33R
AGA 22B BRIGADER 53L
AGA 277D MISS STANDARD 810H

Ranked 121 / 918 published RFI EPDs
Long & solid marked with a woolly, yellow haircoat with a great top, thick quarters and great pants, this 2U son placed far above average on the RFI EPD report. The ultrasound scanner revealed a REA of 1.25/100 lbs. **Retaining semen interest**

7

AGA 72S BERT'S ANDY 7A

C02986372 ALNK 7A MARCH 17 2013

BW:	63
205:	564
'15 EPDs	
CE:	+2.4
BW:	-0.4
WW:	+40.6
YW:	+51.3
MCE:	+3.1
Milk:	+21.5
TM:	+41.8

96 ANDY 7L
96 ANDY 72S
96 EVE 18N

96 ANDY 81F
96 HANNA 9J
DUNN'S 02C LAD 14E
96 LADY 56E

AGA 20J STANMORE 21M
AGA 21M MISS STANMORE 126T
AGA 656U MISS STANDARD 135J

AGA 121G STANMORE 20J
AGA 5C MISS ENERLAD 68K
STANDRD LAD 656 4ET
AGA 852 MISS STANMORE 22C

Top % of Breed for:
CE 30%, BW 3%, MCE 15%, STAY 4%, MARB 15%

Heifer bull!

19

AGA 72S BERT'S ANDY ANCHOR 19A

C02986651 ALNK 19A MARCH 21 2013

BW:	93
205:	558
'15 EPDs	
CE:	-1.7
BW:	+4.7
WW:	+52.0
YW:	+77.5
MCE:	-0.2
Milk:	+18.4
TM:	+44.4

96 ANDY 7L
96 ANDY 72S
96 EVE 18N

96 ANDY 81F
96 HANNA 9J
DUNN'S 02C LAD 14E
96 LADY 56E

AGA 26R STANMORE 5T
AGA 5T MISS STANMORE DOM 90W
AGA 114L MISS GENERAL 62T

AGA 21M STANMORE 26R
AGA 53L MISS RED DOMINO 122R
AGA 13G GENERAL 114L
AGA 20J MISS STANMORE 36L

Top % of Breed for: WW 30%
96 ANDY 72S has done it again by producing this great son with performance galore, plus length, plus thickness, excellent feet & legs, well-marked and correct. His excellent ultrasound of Ribeye 1.10/ 100 lbs and adj MARB of 4.11 rounds out his balanced EPDs. The cow is correct, feminine with a flat udder & well-placed teats and anchored by solid well-placed feet. **Retaining semen interest.**

21

AGA 72S BERT'S ANDY 21A

C02986652 ALNK 21A MARCH 21 2013

BW:	77
205:	569
'15 EPDs	
CE:	-0.5
BW:	+3.7
WW:	+48.4
YW:	+66.9
MCE:	+2.1
Milk:	+14.5
TM:	+38.7

96 ANDY 7L
96 ANDY 72S
96 EVE 18N

AGA 656U STANDARD ET 101J
AGA 101J MISS STANDARD 240L
AGA 852 MISS STANMORE 22C

96 ANDY 81F
96 HANNA 9J
DUNN'S 02C LAD 14E
96 LADY 56E

STANDRD LAD 656 4ET
AGA MISS 80S VOLTAGE ET 14X
CTY K STANMORE X852
AGA 40Y MISS BRITISHER 30A

23

AGA 18Y STERLING 23A

C02986653 ALNK 23A MARCH 21 2013

BW:	68
205:	632
'15 EPDs	
CE:	+2.7
BW:	+1.1
WW:	+40.7
YW:	+58.3
MCE:	+2.8
Milk:	+25.5
TM:	+45.9

CC 77J STERLING 39T
LBH 39T STERLING 18Y
LBH 66T MISS RIBSTONE 237W

CARLRAMS 48H HUGO 129S
CFH 129S LASS 153Y
CFH 82N LASS 662S

CC 129D SUPERMAN 77J
CC 56M SYLVIA 3R
LBH 157K RIBSTONE 66T
LBH 72M MISS SUNSHINE 272T

CARLRAMS HUGO 48H
CARLRAMS LADY DOMINO 33L
MN 53Z PRINCE DOMINO 82N
AGA 67Z MISS CENTENNIAL 504E

Top % of Breed for: CE 25%, BW 15%, MILK 20%, MCE 20%, STAY 10%, MPI 30%, FMI 30%, MARB 20%

Heifer bull! Take a look at those above average Indexes for Birth, Weaning and Yearling! And those "Top % of the breed" numbers speak volumes! During the ultrasound scan, REA ranked 4 / 16, Marb ranked 2/16, and also produced a Lean Meat Yield score of 65.5.

25

AGA 67X ADRENALIN EXPRESS 25A

C03003827 ALNK 25A MARCH 22 2013

BW:	86
205:	604
'15 EPDs	
CE:	+1.0
BW:	+3.4
WW:	+45.6
YW:	+72.6
MCE:	+1.4
Milk:	+21.1
TM:	+43.9

CTY EASY 705T
AGA 705 EASYGOING EXPRESS 67X
AGA 21M MISS STANMORE 22T

AGA 79H BRIT DOM ET 70N
AGA 70N MISS BRIT DOM 805U
AGA 53L MISS RED DOMINO 102S

AGA 10S STANDARD 137Y
COURTNEY LASS J921
AGA 20J STANMORE 21M
AGA 207N MISS SILVER 9R

FE 135D BRIT DOM 79H
AGA 656U MISS STANDARD ET 17H
AGA 22B BRIGADER 53L
AGA 35J MISS SILVER PRIDE 69N

Top % of Breed for: MARB 25%

Adrenaline Express - coming thru! This 67X son took a battering this summer, but is continually improving through time! He's got balanced EPDs, while topping ultrasound's REA & Marb indx 120, & 65.3 Yield! He's much like his sire, strong in WN & YR performance (Watch for future 67X sons...) & inherits lots of hair from his dam, strong, long & feminine - producing 3 hrs avg 87 lb BW, 116.3 WN indx, and 117.5 YR index and this son born 86 lbs, WN indexing 107 and YR indexing 109.

28

AGA 705 EASYGOING 28A

C02987379 ALNK 28A MARCH 23 2013

BW:	72
205:	462
'15 EPDs	
CE:	+2.4
BW:	+2.0
WW:	+26.2
YW:	+36.8
MCE:	+0.4
Milk:	+16.9
TM:	+30.0

AGA 10S STANDARD 137Y
CTY EASY 705T
COURTNEY LASS J921

AGA 41F HI STANDARD 73R
AGA 73R MISS STANDARD 3T
AGA 53L MISS RED DOMINO 14N

SJSL HI 20 STAND LAD 10S
GU MISS 46E BRITISHER 10K
SNS SUPER SILVER 35D
COURTNEY LASS E522

BANNERLANE HI STANDARD 41F
AGA 22B MISS BRIGADER ET 11L
AGA 22B BRIGADER 53L
AGA 67Z MISS CENTENNIAL ET 18D

Top % of Breed for: CE 30%, BW 25%, STAY 20%, MARB 30% Ranked 1 / 918 published RFI EPDs

Here's the chart topper of the CHA's recently released RFI EPDs! From 600+ bulls tested, 28A came out with the #1 RFI EPD and #3 in RIG EPD! His sire, 705T was sired by XUB 137Y who was bred & raised on our ranch. His light BW influence has passed down to 28A, born at 78 lbs, who can be used on heifers. His dam's got moderate size, femininity, and excellent coat & hair and a nice tucked up udder. **Heifer Bull!**

32

AGA 705 EASYGOING 32A

C02987655 ALNK 32A MARCH 24 2013

BW:	91
205:	537
'15 EPDs	
CE:	+0.6
BW:	+4.5
WW:	+40.6
YW:	+68.6
MCE:	-0.9
Milk:	+17.1
TM:	+37.4

AGA 10S STANDARD 137Y
CTY EASY 705T
COURTNEY LASS J921

CFH 73K LAD 479P
CFH 479P LASS 719T
CFH 124J GOVERNOR LASS 231M

SJSL HI 20 STAND LAD 10S
GU MISS 46E BRITISHER 10K
SNS SUPER SILVER 35D
COURTNEY LASS E522

RIVERBRIDGE 85G LAD 73K
CC 129D PRINCESS 119H
AGA 656U STANDARD ET 124J
CFH MISS GOVERNOR 451D

Ranked 84 / 918 published RFI EPDs

39

AGA 72S BERT'S ANDY 39A

C02987660 ALNK 39A MARCH 25 2013

BW:	94
205:	694
'15 EPDs	
CE:	+0.0
BW:	+4.0
WW:	+58.1
YW:	+90.1
MCE:	+0.4
Milk:	+17.7
TM:	+46.8

96 ANDY 7L
96 ANDY 72S
96 EVE 18N

AGA 79H BRIT DOM ET 70N
AGA 70N MISS BRIT DOM 62S
AGA 44C MISS SILVER 61G

96 ANDY 81F
96 HANNA 9J
DUNN'S 02C LAD 14E
96 LADY 56E

FE 135D BRIT DOM 79H
AGA 656U MISS STANDARD ET 17H
SNS SILVER PRINCE 44C
AGA MISS CENTENNIAL 62C

Top % of Breed for: WW 10%, YW 20%, SC 30%, MPI 30%

This incredible son of 72S that I used last year, has excellent performance (#1 WN, #2 YR with the RFI group), and above avg RFI round out his balanced EPDs, + above avg REA (1.09/100 lbs) & MARB scores. The dam, 62S, raised 2 males: avg 120 WN indx (& avg 114.5 YR indx) & 5 hrs: avg 108.8 WN indx (& avg 107 YR indx). With great conformation, solid feet and a great udder, she backs 39A 100%! **Retaining 1/2 interest and 1/2 possession.**

45

AGA 203Y ATOM GREGORY PETE 45A

C02987665 ALNK 45A MARCH 26 2013

BW:	68
205:	628
'15 EPDs	
CE:	+3.3
BW:	-0.3
WW:	+41.8
YW:	+66.9
MCE:	+4.5
Milk:	+28.5
TM:	+49.4

UPS DOMINO 3027
GCC PETE 203Y ET
LPG STANDARD 44B LASS 50H

AGA 13G GENERAL 114L
AGA 114L MISS GENERAL 20X
AGA 118L MISS STANDARD 2R

CL 1 DOMINO 9126J 1ET
UPS MISS DIAMOND 1353
96 STANDARD 6A 25E
LPG COMMANDER 8080 LASS 59D
GEM GENERAL 13G
AGA 656U MISS STANDARD ET 17H
AGA 85J STANDARD 118L
AGA 97J MISS RED EXTRA 203N

Top % of Breed for: CE 20%, BW 4%, MILK 10%, TM 30%, MCE 4%, SC 20%, STAY 1%, MPI 10%, MARB 10%, Ranked 325 / 918 published RFI EPDs
Powerful 45A's got stretch, deep muscle, eye appeal, + performance (WN 111 indx) & born at 68lbs with vigour galore - isn't that what we're all striving for? Note those EPDs above! He came out way above avg in RFI also. Ultrasound shows REA of 1.12/100 lbs, and MARB ranked 2 / 24, (135 indx). 20X is the wonderful dam (75 lb BW) to his 2 sisters: (avg 66lbs) & avg WN 110 index! **Retaining semen interest. Heifer Bull!**

We're pleased to participate in the CHA's Feed Efficiency Trials over the last 2 years.

One of our CTY EASY 705T sons topped the RFI EPD list of over 900 head recently released by the CHA!

Plus the vast majority of ours were above average in the group.

**705T's sire, XUB 137Y was bred and raised on our ranch.*



58

AGA 114L GENERAL 58A

C02987734 ALNK 58A MARCH 28 2013

BW:	105
205:	602
'15 EPDs	
CE:	-3.4
BW:	+7.3
WW:	+46.8
YW:	+82.7
MCE:	+0.0
Milk:	+20.8
TM:	+44.2

GEM GENERAL 13G
AGA 13G GENERAL 114L
AGA 656U MISS STANDARD ET 17H

GENERATOR STANDARD 10A
AD 75N LASS 31W
STANDRD LAD 656 4ET
AGA MISS 80S VOLTAGE ET 14X

AGA 22B BRIGADER 53L
AGA 53L MISS RED DOMINO 116R
AGA 10B MISS BEAR 170M

CTY BRIGADER 22B
AGA 189C MISS DOMINO 4E
HLAH 90Z MARK DONALD 10B
AGA 656U MISS STANDARD 135J

Top % of Breed for: SC 25%, FMI 20%

61

AGA 72S BERT'S ANDY 61A

C02987737 ALNK 61A MARCH 29 2013

BW:	102
205:	640
'15 EPDs	
CE:	-1.6
BW:	+5.9
WW:	+52.9
YW:	+77.7
MCE:	-2.1
Milk:	+19.7
TM:	+46.2

96 ANDY 7L
96 ANDY 72S
96 EVE 18N

96 ANDY 81F
96 HANNA 9J
DUNN'S 02C LAD 14E
96 LADY 56E

STANDRD LAD 656 4ET
AGA 656 MISS STANDARD ET 106M
AGA 22B MISS BRIGADER 511E

HI STANDARD LAD 20P
BELL L 60H DOMINO LASS 82K
CTY BRIGADER 22B
AGA MISS 42X STANMORE 94Z

Top % of Breed for: WW 30%, FMI 30%

Looking for good performance? Check out this weaning index of 113 and yearling index of 108 from 61A. He's a well-put-together bull from sire 96 Andy 72S and an excellent dam 106M - and we can't forget his wonderful granddam 511E!

68

AGA 705 EASYGOING AIRLINER 68A

C02987831 ALNK 68A MARCH 30 2013

BW:	105
205:	630
'15 EPDs	
CE:	-0.5
BW:	+6.6
WW:	+47.9
YW:	+88.0
MCE:	-1.7
Milk:	+18.9
TM:	+42.9

AGA 10S STANDARD 137Y
CTY EASY 705T
COURTNEY LASS J921

SJSL HI 20 STAND LAD 10S
GU MISS 46E BRITISHER 10K
SNS SUPER SILVER 35D
COURTNEY LASS E522

AGA 22B BRIGADER 53L
AGA 53L MISS RED DOMINO 121S
AGA 10B MISS BEAR 170M

CTY BRIGADER 22B
AGA 189C MISS DOMINO 4E
HLAH 90Z MARK DONALD 10B
AGA 656U MISS STANDARD 135J

Top % of Breed for: YW 25%, FMI 15%, REA 30%, Ranked 312 / 918 published RFI EPDs

Don't miss the boarding call for this Airliner! Here's a deep, thick bull which has proven to be one of the top performance bulls sired by 705! Above average for RFI at the Efficiency Trial, (same sire as 28A) he also scored top of his group with 1.13 / 100 lbs of REA. His outstanding mother would be proud of his high marks in the gaining fields... She herself is a classic cow with a superb udder.

69

AGA 131Y HERMAN LAD ASLEEP 69A

C02987832 ALNK 69A MARCH 31 2013

BW:	91
205:	609
'15 EPDs	
CE:	+1.4
BW:	+4.7
WW:	+53.5
YW:	+81.6
MCE:	+2.7
Milk:	+26.5
TM:	+53.3

LPG HERMAN LORD LAD 2W
CFH 2W HL LAD 131Y
CFH 157K MISS HI TECH 309N

AGA 4P RIBSTONE 81S
AGA 81S MISS RIBSTONE 126W
AGA 21M MISS STANMORE 76S

MHH 011H BRIT LAD 46R
LPG LANDLORD G44B LASS 50S
K 64H RIBSTONE LAD 157K
CFH 33B MISS HIGH TECH 114L

LCI 157K RIBSTONE 4P
AGA 44K MISS OLD DOMINO 252M
AGA 20J STANMORE 21M
AGA 101J MISS STANDARD 140P

Top % of Breed for: WW 30%, MILK 15%, TM 15%, MCE 20%, MPI 10%, FMI 15%, MARB 15% Ranked 67 / 918 published RFI EPDs

Here's a nice correct son of our Conway bull, 131Y, who performed well (check out those #'s above) & scored well under the hide too: high in REA (1.16/100 lbs) (EPD +0.24) & MARB 4.17 actual, (adj 4.12) (EPD +0.18) & Yield 64.0. His dam's a moderate size, with great deep conformation, "udderly superb", & immaculate feet which she's passed on to 69A. Don't get caught napping when the gavel comes down on this one!

72

AGA 114L GENERAL ALEXANDER 72A

C02987835 ALNK 72A MARCH 31 2013

BW:	94
205:	545
'15 EPDs	
CE:	-2.0
BW:	+4.9
WW:	+36.5
YW:	+69.7
MCE:	+0.2
Milk:	+23.1
TM:	+41.4

GEM GENERAL 13G
AGA 13G GENERAL 114L
AGA 656U MISS STANDARD ET 17H

GENERATOR STANDARD 10A
AD 75N LASS 31W
STANDRD LAD 656 4ET
AGA MISS 80S VOLTAGE ET 14X

AGA 22B BRIGADER 97J
AGA 97J MISS RED EXTRA 258P
AGA 141J MISS STANDARD 191M

CTY BRIGADER 22B
AGA 335C MISS EXTRA 8G
AGA 191G STANDARD 141J
AGA MISS CENTENNIAL 62C

Top % of Breed for: SC 30%, STAY 15%, FMI 25%

73

AGA 72S BERT'S ANDY 73A

C02987836 ALNK 73A MARCH 31 2013

BW:	90
205:	563
'15 EPDs	
CE:	-3.7
BW:	+6.7
WW:	+57.2
YW:	+87.7
MCE:	+0.2
Milk:	+15.4
TM:	+44.0

96 ANDY 7L
96 ANDY 72S
96 EVE 18N

96 ANDY 81F
96 HANNA 9J
DUNN'S 02C LAD 14E
96 LADY 56E

AGA 277D STANDARD 191G
AGA 191G MISS STANDARD ET 147L
AGA MISS 80S VOLTAGE ET 14X

BAR-OM 656 ST COMMAND LAD 277D
AGA 852 MISS STANMORE ET 8C
LCI ET HIGH VOLTAGE 80S
MISS 51K BRITISHER AGA 61N

Top % of Breed for: WW 15%, YW 25%

74

AGA 203Y GREGORY PETE 74A

C02988007 ALNK 74A APRIL 01 2013

BW:	83
205:	612
'15 EPDs	
CE:	+2.9
BW:	+1.8
WW:	+42.7
YW:	+66.1
MCE:	+3.5
Milk:	+24.4
TM:	+45.8

UPS DOMINO 3027
GCC PETE 203Y ET
LPG STANDARD 44B LASS 50H

CL 1 DOMINO 9126J 1ET
UPS MISS DIAMOND 1353
96 STANDARD 6A 25E
LPG COMMANDER 8080 LASS 59D

CC 77J JARROD 26T
AGA 26T MISS JARROD 85X
AGA 101J MISS STANDARD 97R

CC 129D SUPERMAN 77J
CC 14N JOCELYN 33R
AGA 656U STANDARD ET 101J
AGA 303Y MISS STANDARD 141E

Top % of Breed for: CE 25%, BW 20%, MILK 30%, MCE 10%, STAY 1%, MPI 20%, MARB 25% Built like a brick, this deep, thick & stout son of 203Y was born 83 lbs & with his feet under him, ready to go & grow, much like 203Y's other progeny! (203Y's avg BW on 14 hfrs = 69 lbs & 4 males = 76 lbs - all unassisted, of course) Growing to a solid 108 index at WN, & above avg RFI rank, this 74A sports respectable performance plus that rack of "Top %" #s shown above! Dam 85X, superb at every angle, is proud indeed! **Heifer bull.**

81

AGA 705 EASYGOING 81A

C02988010 ALNK 81A APRIL 03 2013

BW:	82
205:	417
'15 EPDs	
CE:	+0.7
BW:	+4.6
WW:	+36.0
YW:	+68.6
MCE:	-0.2
Milk:	+11.1
TM:	+29.1

AGA 10S STANDARD 137Y
CTY EASY 705T
COURTNEY LASS J921

AGA 79H BRIT DOM ET 70N
AGA 70N MISS BRIT DOM 13U
AGA 22B MISS BRIGADER 23L

SJSL HI 20 STAND LAD 10S
GU MISS 46E BRITISHER 10K
SNS SUPER SILVER 35D
COURTNEY LASS E522

FE 135D BRIT DOM 79H
AGA 656U MISS STANDARD ET 17H
CTY BRIGADER 22B
AGA 191G MISS STANDARD 49J

Heifer bull!

84

**AGA 705 EASYGOING
AGENT 84A**

C02988190 ALNK 84A APRIL 04 2013

BW:	102
205:	633
'15 EPDs	
CE:	-0.1
BW:	+4.7
WW:	+48.7
YW:	+80.6
MCE:	-0.4
Milk:	+23.2
TM:	+47.6

AGA 10S STANDARD 137Y
CTY EASY 705T
COURTNEY LASS J921

SJSL HI 20 STAND LAD 10S
GU MISS 46E BRITISHER 10K
SNS SUPER SILVER 35D
COURTNEY LASS E522

AGA 20J STANMORE 21M
AGA 21M MISS STANMORE 22T
AGA 207N MISS SILVER 9R

AGA 121G STANMORE 20J
AGA 5C MISS ENERLAD 68K
AGA 35J SILVER PRIDE 207N
AGA 53A MISS STANDARD ET 152M

Top % of Breed for: SC 30%, Ranked 81 / 918 published RFI EPDs

97

**AGA 2U AMAZING
BRITISHER 97A**

C02988419 ALNK 97A APRIL 08 2013

BW:	94
205:	558
'15 EPDs	
CE:	+0.8
BW:	+4.9
WW:	+39.2
YW:	+71.0
MCE:	-1.3
Milk:	+18.1
TM:	+37.7

DP BRITISHER AGA 46E
AGA 46E BRITISHER ET 2U
AGA 22B MISS BRIGADER 511E

DOMINO STANDARD DP LAD 45
BRITISHER WETMORE LADY AGA 5A
CTY BRIGADER 22B
AGA MISS 42X STANMORE 94Z

AGA 13G GENERAL 114L
AGA 114L MISS GENERAL 35U
AGA 53A MISS STANDARD ET 152M

GEM GENERAL 13G
AGA 656U MISS STANDARD ET 17H
SGC 14X STANDARD LAD 53A
AGA 22B MISS BRIGADER 511E

85

**AGA 131Y HERMAN LAD
ALFRED 85A**

C02988191 ALNK 85A APRIL 04 2013

BW:	79
205:	627
'15 EPDs	
CE:	+2.0
BW:	+3.9
WW:	+47.4
YW:	+82.1
MCE:	+0.9
Milk:	+26.0
TM:	+49.7

LPG HERMAN LORD LAD 2W
CFH 2W HL LAD 131Y
CFH 157K MISS HI TECH 309N

MHH 011H BRIT LAD 46R
LPG LANDLORD G44B LASS 50S
K 64H RIBSTONE LAD 157K
CFH 33B MISS HIGH TECH 114L

AGA 13G GENERAL 114L
AGA 114L MISS ULTRA GEN 99U
AGA 22B MISS BRIGADER 511E

GEM GENERAL 13G
AGA 656U MISS STANDARD ET 17H
CTY BRIGADER 22B
AGA MISS 42X STANMORE 94Z

Top % of Breed for: MILK 15%, TM 30%, SC 15%, MPI 25%, FMI 30%
Ranked 85 / 918 published RFI EPDs

106

AGA 2U BRITISHER 106A

C02990965 ALNK 106A APRIL 10 2013

BW:	95
205:	--
'15 EPDs	
CE:	-0.9
BW:	+7.0
WW:	+46.5
YW:	+71.6
MCE:	-1.2
Milk:	+17.6
TM:	+40.9

DP BRITISHER AGA 46E
AGA 46E BRITISHER ET 2U
AGA 22B MISS BRIGADER 511E

DOMINO STANDARD DP LAD 45
BRITISHER WETMORE LADY AGA 5A
CTY BRIGADER 22B
AGA MISS 42X STANMORE 94Z

SGC 76P ROYAL AMIGO 174S
AGA 174S MISS ROYAL AMIGO 74Y
AGA 21M MISS STANMORE 120S

EHF RED LAD 76P
XTC 126L AMIGO BELLE 201N
AGA 20J STANMORE 21M
AGA 82K MISS KAPTAIN ET 50P

This fella has ribs sooo deep and feet that have never even hinted at needing a hoof trimmer! He's got that thick long hair much like his dad, 2U...

87

AGA 131Y HERMAN LAD 87A

C02988410 ALNK 87A APRIL 06 2013

BW:	88
205:	549
'15 EPDs	
CE:	+0.1
BW:	+5.8
WW:	+40.9
YW:	+69.7
MCE:	+2.1
Milk:	+19.2
TM:	+39.7

LPG HERMAN LORD LAD 2W
CFH 2W HL LAD 131Y
CFH 157K MISS HI TECH 309N

MHH 011H BRIT LAD 46R
LPG LANDLORD G44B LASS 50S
K 64H RIBSTONE LAD 157K
CFH 33B MISS HIGH TECH 114L

LCI 68R RED STANDARD 109U
AGA 109U MISS RIB STANDARD 90X
AGA 73R MISS STANDARD 3T

JNHR RED STANDARD 68R
LCI KD CRYSTAL 7N
AGA 41F HI STANDARD 73R
AGA 53L MISS RED DOMINO 14N

Top % of Breed for: STAY 15%

110

AGA 2U ALPHA BRITISHER 110A

C02990968 ALNK 110A APRIL 12 2013

BW:	105
205:	680
'15 EPDs	
CE:	+0.6
BW:	+5.7
WW:	+46.8
YW:	+62.5
MCE:	-0.9
Milk:	+19.0
TM:	+42.4

DP BRITISHER AGA 46E
AGA 46E BRITISHER ET 2U
AGA 22B MISS BRIGADER 511E

DOMINO STANDARD DP LAD 45
BRITISHER WETMORE LADY AGA 5A
CTY BRIGADER 22B
AGA MISS 42X STANMORE 94Z

AGA 4P RIBSTONE 81S
AGA 81S MISS RIBSTONE 43W
AGA 53L MISS RED DOMINO 116R

LCI 157K RIBSTONE 4P
AGA 44K MISS OLD DOMINO 252M
AGA 22B BRIGADER 53L
AGA 10B MISS BEAR 170M

Top % of Breed for: FMI 25%
Here's yet another great son of 2U, well marked, with long & curly hair, long muscling and correct body. He grabbed # 2 spot at weaning, then alas, fell sick in spring & summer, but has blossomed again now. His dam, 43W, is known for producing eye-appealing calves like 110A and has weaned 3 boys with an average weaning index of 114. Ultrasound also reports a great Yield of 65.2 **Retaining semen interest.**

89

**AGA 2U BRITISHER
APPLAUSE 89A**

C02988412 ALNK 89A APRIL 06 2013

BW:	105
205:	664
'15 EPDs	
CE:	+0.2
BW:	+7.0
WW:	+48.8
YW:	+66.9
MCE:	-2.9
Milk:	+17.1
TM:	+41.5

DP BRITISHER AGA 46E
AGA 46E BRITISHER ET 2U
AGA 22B MISS BRIGADER 511E

DOMINO STANDARD DP LAD 45
BRITISHER WETMORE LADY AGA 5A
CTY BRIGADER 22B
AGA MISS 42X STANMORE 94Z

AGA 4P RIBSTONE 81S
AGA 81S MISS RIBSTONE 120W
AGA 41F MISS HI STANDARD 61S

LCI 157K RIBSTONE 4P
AGA 44K MISS OLD DOMINO 252M
BANNERLANE HI STANDARD 41F
AGA 22B MISS BRIGADER ET 11L

Top % of Breed for: MARB 3% Ranked 216 / 918 published RFI EPDs

115

AGA 2Y MO LE DOMINO 115A

C02990972 ALNK 115A APRIL 12 2013

BW:	65
205:-	553
'15 EPDs	
CE:	+5.5
BW:	-1.6
WW:	+21.6
YW:	+44.1
MCE:	+1.6
Milk:	+17.0
TM:	+27.8

MR MO LE 47F
AGA 47F DOMINO ET 2Y
AGA 22B MISS BRIGADER 511E

DOUBLE MO LE 12B
D STANDARD LASS 88B
CTY BRIGADER 22B
AGA MISS 42X STANMORE 94Z

AGA 26R WHAM HAMMER 87W
AGA 87W MISS DIA WHAM 81Y
AGA 53L MISS RED DOMINO 1W

LFF 5L JACK HAMMER 26R
AGA 44K MISS OLD DOMINO 252M
AGA 22B BRIGADER 53L
AGA 21M MISS STANMORE 617S

Top % of Breed for: CE 4%, BW 1%, STAY 3%
Here's a great **heifer bull** from AGA 47F DOMINO ET 2Y... Notice that 65 lb birthweight and the length & thickness to boot!

116 AGA 114L GENERAL ABSOLUTE 116A

C02990973 ALNK 116A APRIL 14 2013

BW:	85
205:	573
'15 EPDs	
CE:	-0.7
BW:	+4.3
WW:	+35.9
YW:	+61.9
MCE:	+1.3
Milk:	+21.4
TM:	+39.4

GEM GENERAL 13G	GENERATOR STANDARD 10A
AGA 13G GENERAL 114L	AD 75N LASS 31W
AGA 656U MISS STANDARD ET 17H	STANDRD LAD 656 4ET
	AGA MISS 80S VOLTAGE ET 14X
CTY EASY 705T	AGA 10S STANDARD 137Y
AGA 705 MISS EASYGOING 129X	COURTNEY LASS J921
AGA 21M MISS STANMORE 151P	AGA 20J STANMORE 21M
	AGA 97J MISS RED EXTRA 145M

Top % of Breed for: SC 20%, STAY 25%

General Absolute is an impressive bull by 114L with the signature muscle, bone, hair, length, and wide top, and is well-marked. In addition to carrying on his sire's legacy, his mother was the dam of the high seller in last year's sale that sold to Berry Land & Livestock Co for \$14,000.

Retaining semen interest.

126 AGA 131Y HERMAN LAD 126A

C02988805 ALNK 126A APRIL 22 2013

BW:	85
205:	469
'15 EPDs	
CE:	-0.6
BW:	+5.9
WW:	+39.0
YW:	+69.7
MCE:	+1.0
Milk:	+22.5
TM:	+42.0

LPG HERMAN LORD LAD 2W	MHH 011H BRIT LAD 46R
CFH 2W HL LAD 131Y	LPG LANDLORD G44B LASS 50S
CFH 157K MISS HI TECH 309N	K 64H RIBSTONE LAD 157K
	CFH 33B MISS HIGH TECH 114L

AGA 13G GENERAL 114L	GEM GENERAL 13G
AGA 114L GEN'S X'S AND O'S 27X	AGA 656U MISS STANDARD ET 17H
AGA 97J MISS RED EXTRA 258P	AGA 22B BRIGADER 97J
	AGA 141J MISS STANDARD 191M

Top % of Breed for: SC 30%, STAY 10%, MARB 15%

117 AGA 705 EASYGOING 117A

C02990974 ALNK 117A APRIL 14 2013

BW:	84
205:	626
'15 EPDs	
CE:	+1.7
BW:	+2.5
WW:	+45.0
YW:	+66.1
MCE:	+2.2
Milk:	+22.3
TM:	+44.8

AGA 10S STANDARD 137Y	SJSL HI 20 STAND LAD 10S
CTY EASY 705T	GU MISS 46E BRITISHER 10K
COURTNEY LASS J921	SNS SUPER SILVER 35D
	COURTNEY LASS E522
AGA 20J STANMORE 21M	AGA 121G STANMORE 20J
AGA 21M MISS STANMORE 88S	AGA 5C MISS ENERLAD 68K
AGA 656U MISS STANDARD ET 75P	STANDRD LAD 656 4ET
	AGA 852 MISS STANMORE 22C

Top % of Breed for: MCE 30%, SC 30%

705 sired this long & correct youngster with the straight back and wide top! 117A's mother, 88S, also raised 48Y, bought by Douglas Lake, and just keeps on giving & giving. She's provided me a great collection of bulls which I can reliably enter into each year's sale. She's a 21M daughter and has been a terrific cow: 4 bull calves avg'd 83 lbs BW and 110 WW indexes, and 3 heifer calves avg'd 75 lb BW and 103.3 WN indexes. 117A can also be used on heifers!

129 AGA 705 EASYGOING 129A

C02988971 ALNK 129A APRIL 26 2013

BW:	98
205:	528
'15 EPDs	
CE:	+0.2
BW:	+5.4
WW:	+42.8
YW:	+73.0
MCE:	+0.7
Milk:	+13.2
TM:	+34.6

AGA 10S STANDARD 137Y	SJSL HI 20 STAND LAD 10S
CTY EASY 705T	GU MISS 46E BRITISHER 10K
COURTNEY LASS J921	SNS SUPER SILVER 35D
	COURTNEY LASS E522

LCI 157K RIBSTONE 4P	K 64H RIBSTONE LAD 157K
AGA 4P MISS RIBSTONE 35T	LCI SUPERIOR GIRL 121H
AGA 656U MISS STANDARD 45K	STANDRD LAD 656 4ET
	AGA 40Y MISS BRITISHER 88F

Top % of Breed for: SC 20% Ranked 187 / 918 published RFI EPDs

121 AGA 705 EASYGOING ACADEMY 121A

C02988657 ALNK 121A APRIL 17 2013

BW:	95
205:	621
'15 EPDs	
CE:	-0.1
BW:	+4.5
WW:	+40.2
YW:	+71.7
MCE:	+0.2
Milk:	+15.7
TM:	+35.8

AGA 10S STANDARD 137Y	SJSL HI 20 STAND LAD 10S
CTY EASY 705T	GU MISS 46E BRITISHER 10K
COURTNEY LASS J921	SNS SUPER SILVER 35D
	COURTNEY LASS E522
LLL 85A STANDARD 93D	LLL FE STD BRIT 85A
AGA 93D MISS STANDARD 86R	LLL 81R STD BRIT LASS 77W
AGA 15H MISS BRITISHER 106L	46E BRITISHER AGA 15H
	AGA 121G MISS STANMORE 134J

Ranked 46 / 918 published RFI EPDs

Long as a train, this deep-bodied bull produced some remarkable results from the Feed Efficiency Trial - once again, another fine son of 705!

134 AGA 705 EASYGOING 134A

C02989656 ALNK 134A MAY 07 2013

BW:	107
205:	607
'15 EPDs	
CE:	+0.1
BW:	+6.5
WW:	+46.7
YW:	+78.0
MCE:	-1.1
Milk:	+15.3
TM:	+38.7

AGA 10S STANDARD 137Y	SJSL HI 20 STAND LAD 10S
CTY EASY 705T	GU MISS 46E BRITISHER 10K
COURTNEY LASS J921	SNS SUPER SILVER 35D
	COURTNEY LASS E522

AGA 22B BRIGADER 53L	CTY BRIGADER 22B
AGA 53L MISS RED DOMINO 57S	AGA 189C MISS DOMINO 4E
AGA 79H MISS BRIT DOM 29N	FE 135D BRIT DOM 79H
	AGA 13G MISS GENERAL 9K

Top % of Breed for: FMI 10% Ranked 120 / 918 published RFI EPDs
A thick and curly haircoat covers this burly body of performance! And ultrasound reveals the REA scoring 1.19/100 lbs (ranking 2/24) and indexing 118 plus a remarkable Lean Meat YIELD of 66.2.

125 AGA 2U BRITISHER 125A

C02988804 ALNK 125A APRIL 21 2013

BW:	93
205:	509
'15 EPDs	
CE:	+0.2
BW:	+5.0
WW:	+33.1
YW:	+55.5
MCE:	-1.3
Milk:	+12.3
TM:	+28.9

DP BRITISHER AGA 46E	DOMINO STANDARD DP LAD 45
AGA 46E BRITISHER ET 2U	BRITISHER WETMORE LADY AGA 5A
AGA 22B MISS BRIGADER 511E	CTY BRIGADER 22B
	AGA MISS 42X STANMORE 94Z

AGA 13G GENERAL 114L	GEM GENERAL 13G
AGA 114L MISS GENERAL 69S	AGA 656U MISS STANDARD ET 17H
AGA 22B MISS BRIGADER 73K	CTY BRIGADER 22B
	AGA 85A MISS STD BRIT ET 16H

140 AGA 60W BANNER SPORT 140A

C02989658 ALNK 140A MAY 12 2013

BW:	78
205:	510
'15 EPDs	
CE:	+2.4
BW:	+2.1
WW:	+38.3
YW:	+62.3
MCE:	+2.4
Milk:	+18.3
TM:	+37.5

BBSF 6P SPORT 232S	HAWKEYE 75K SKY LAD 6P
BANNERLANE 232 EXTRA GEN 60W	BBSF 18H EXTRA LASS 237M
BANNERLANE GENSTAR LASS 27R	C 80G L SARGENT 78K
	BANNERLANE STAN LASS 39M

LCI 68R RED STANDARD 109U	JNHR RED STANDARD 68R
AGA 109U MISS RIB STANDARD 68Y	LCI KD CRYSTAL 7N
AGA 6N MISS STANDARD 50R	AGA 656 STANDARD ET 6N
	AGA 97J MISS RED EXTRA 9N

Top % of Breed for: CE 30%, BW 25%, MCE 25%, STAY 15%, MARB 15%
140A carries the Banner as an eye-appealing son of 60W, complete with length, thick quarters, lots of pants, and a wooly hair coat. Don't miss that Marbling EPD of +0.17 too! He himself was born weighing 78 lbs and promises to replicate this moderate birthweight as a **heifer bull**.

301

AGA 47U URANIUM 301A

?Y39965 ALNK 301A SEPTEMBER 04 2013

BW:	73
205:	576
'15 EPDs	
CE:	+3.4
BW:	+1.2
WW:	+35.5
YW:	+64.5
MCE:	+0.9
Milk:	+13.3
TM:	+31.1

CC 129D SUPERMAN 77J AGA 77J SUPER URANIUM 47U AGA 44K MISS OLD DOMINO 252M	FE 07Y SUPER 129D CC 42W JULIANA 66Z AGA 1S OLD DOMINO 44K AGA 102E MISS EXTRA 190K
AGA 79H BRIT DOM ET 70N AGA 70N MISS BRIT DOM 8W AGA 47F MISS DOMINO 15K	FE 135D BRIT DOM 79H AGA 656U MISS STANDARD ET 17H MR MO LE 47F AGA 656U MISS STANDARD 29H

Top % of Breed for: CE20%, BW 15%, SC 30%, FMI 30%
Heifer Bull!

307

AGA 127Y ABSOLUTELY YES 307A

C02992252 ALNK 307A SEPTEMBER 14 2013

BW:	98
205:	636
'15 EPDs	
CE:	-1.5
BW:	+5.8
WW:	+51.1
YW:	+80.4
MCE:	-0.3
Milk:	+18.3
TM:	+43.9

BCD 140L DOM LAD 326N C 326N YES I CAN 127Y LONE-PINE ICE QUEEN 55T	BP ROBIN HOOD 140L BP 146D LADY 30L LRD LIBERTY PRINCE 24M MHF 9322 ICICLES 16M
AGA 656U STANDARD ET 124J AGA 124J MISS STANDARD ET 32R AGA 22B MISS BRIGADER 511E	STANDRD LAD 656 4ET AGA MISS 80S VOLTAGE ET 14X CTY BRIGADER 22B AGA MISS 42X STANMORE 94Z

Top % of Breed for: FMI 25%
It's an Absolute Yes to this high performance bull! Wide pants, length, great loin and thickness and a well-marked excellent hair coat more than makes up for his short ears! Great feet means there's no need for a hoof trimmer anywhere near this fella! 307A is a great cross of sire C 326N YES I CAN 127Y and our own massively deep AGA 124J MISS STANDARD ET 32R cow.

313

AGA 127Y YES ARCHIBALD 313A

C03003476 ALNK 313A SEPTEMBER 19 2013

BW:	99
205:	705
'15 EPDs	
CE:	-4.2
BW:	+7.5
WW:	+56.5
YW:	+91.0
MCE:	-0.1
Milk:	+15.9
TM:	+44.2

BCD 140L DOM LAD 326N C 326N YES I CAN 127Y LONE-PINE ICE QUEEN 55T	BP ROBIN HOOD 140L BP 146D LADY 30L LRD LIBERTY PRINCE 24M MHF 9322 ICICLES 16M
AGA 13G GENERAL 114L AGA 114L MISS GENERAL 81T AGA 141J MISS STANDARD 223L	GEM GENERAL 13G AGA 656U MISS STANDARD ET 17H AGA 191G STANDARD 141J AGA 23D MISS DOMINO 171H

Top % of Breed for: WW 15%, YW 20%, SC 30%
Yes, Archibald, whatever you say, Archibald! This son of 127Y has indeed impressed us again with his quality and conformation, eye-appeal and that excellent woolly hair coat. He beat out his competitors at Weaning (118 index) and at Yearling (114 index). Bragging rights also belong to the incredible mother, 81T, who has consistently produced 4 sons with avg 108.5 WN index and one daughter indexing 122 at weaning. **Retaining semen interest.**

315

AGA 127Y YES ARMSTRONG 315A

C03003828 ALNK 315A SEPTEMBER 21 2013

BW:	86
205:	648
'15 EPDs	
CE:	+0.1
BW:	+3.7
WW:	+47.3
YW:	+72.8
MCE:	+1.0
Milk:	+15.0
TM:	+38.7

BCD 140L DOM LAD 326N C 326N YES I CAN 127Y LONE-PINE ICE QUEEN 55T	BP ROBIN HOOD 140L BP 146D LADY 30L LRD LIBERTY PRINCE 24M MHF 9322 ICICLES 16M
STANDRD LAD 656 4ET AGA 656 MISS STANDARD 15M AGA 335C MISS EXTRA 8G	HI STANDARD LAD 20P BELL L 60H DOMINO LASS 82K CTY EXTRA 335C AGA 67Z MISS CENTENNIAL 81D

Top % of Breed for: SC 30%
Armstrong is a great progeny with length and thickness, sired by C 326N YES I CAN 127Y. To add to his confidence, his mother, 15M, comes from the Dam of Great Distinction cow, 8G. She is an awesome cow with length, correctness, great feet and a gorgeous bag that nourished this beautiful 315A calf. **Retaining semen interest.**

317

AGA 127Y YES AMBITIOUS 317A

C03003829 ALNK 317A SEPTEMBER 20 2013

BW:	71
205:	558
'15 EPDs	
CE:	-0.2
BW:	+4.0
WW:	+53.3
YW:	+101.0
MCE:	+3.1
Milk:	+13.3
TM:	+40.0

BCD 140L DOM LAD 326N C 326N YES I CAN 127Y LONE-PINE ICE QUEEN 55T	BP ROBIN HOOD 140L BP 146D LADY 30L LRD LIBERTY PRINCE 24M MHF 9322 ICICLES 16M
LCI 68R RED STANDARD 109U AGA 109U MISS RIB STANDARD 74X AGA 70N MISS BRIT DOM 62S	JNHR RED STANDARD 68R LCI KD CRYSTAL 7N AGA 79H BRIT DOM ET 70N AGA 44C MISS SILVER 61G

Top % of Breed for:
WW 30%, YW 4%, MCE 15%, SC 15%, FMI 15%, REA 30%

321

AGA 127Y YES ALBERT 321A

C03003830 ALNK 321A OCTOBER 03 2013

BW:	83
205:	633
'15 EPDs	
CE:	-2.3
BW:	+5.2
WW:	+45.8
YW:	+68.0
MCE:	+1.7
Milk:	+14.9
TM:	+37.8

BCD 140L DOM LAD 326N C 326N YES I CAN 127Y LONE-PINE ICE QUEEN 55T	BP ROBIN HOOD 140L BP 146D LADY 30L LRD LIBERTY PRINCE 24M MHF 9322 ICICLES 16M
STANDRD LAD 656 4ET AGA 656U MISS STANDARD ET 17H AGA MISS 80S VOLTAGE ET 14X	HI STANDARD LAD 20P BELL L 60H DOMINO LASS 82K LCI ET HIGH VOLTAGE 80S MISS 51K BRITISHER AGA 61N

Top % of Breed for: SC 30%

HERD HEALTH

CLARESHOLM VETERINARY SERVICES, LTD.

Box 2350, Claresholm AB T0L 0T0 (403) 625-3677

K. WRIGHT, DVM, C. FANCY, DVM, K. BRANDON, DVM

January 2015

Claresholm Veterinary Services Ltd. has been providing veterinary service and consultation for over 20 years to the Ulrich Hereford Ranch. The majority of the service consists of breeding soundness evaluations of the bulls and herd health consultation.

Health problems are minimized with a good vaccination program and excellent management. Calves are vaccinated with Zoetis Select Vac Gold Vaccine Program (the comprehensive program to protect against pneumonia and BVD and IBR viruses) in the spring and fall. The replacement heifers and bulls receive Bovi-shield Gold FP5-VL5 in the spring before breeding. The cow herd receives Bovi-shield Gold FP5-VL5 prior to calving. Cows and heifers also receive a scour prevention vaccine (Scourbos 9) annually.

Claresholm Veterinary Services Ltd. is proud to be associated with the Ulrich Hereford Ranch and their cattle operation.

THANK YOU TO OUR SPONSORS!


Claresholm Veterinary Services Ltd.
Box 2350, 235 Starline Rd.
Claresholm, AB T0L 0T0
www.claresholmvet.ca



Dr. Ken Wright, DVM

PH: 403-625-3677
Fax: 403-625-3655
reception@claresholmvet.ca

After Hours Emerg: 403-625-3608
Toll Free: 1-888-431-0988

Crop Production Services 

Peter Van Kasteren
Crop Production Advisor

Canada
420 - 43rd Ave. E, Box 667
Claresholm, AB
Canada T0L 0T0

Office: 403-625-3329
Fax: 403-625-4145
Cell: 403-682-9095
Email: peter.vankasteren@cpsagu.ca



Co-operative Limited

4424 - 2 Street E.
P.O. Box 8
Claresholm, Alberta T0L 0T0
www.ufa.net

SHELLEY O'NEIL
Agent
Claresholm / Nanton Agency
Skyline Petroleum Ltd.

Claresholm: (403) 625-3593
Nanton: (403) 646-2424
Cell: (403) 625-8952
Fax: (403) 625-4791
Home: (403) 625-3059

Dave Thorlakson
Business Development Manager
Dairy/Beef



Landmark Feeds Inc.

Phone : (403) 329-3192
Cellular : (403) 308-3820
Fax : (403) 329-8046
Toll Free : (877) 750-2474

3102 - 12th Ave. N.
Lethbridge, AB
Canada T1H 5V1

e-mail: dave.thorlakson@nutreco.ca



Catalogue Design by
Coyote Publishing
Ph: 403.394.4481
www.coyotepub.com

ALL-STAR BREEDER

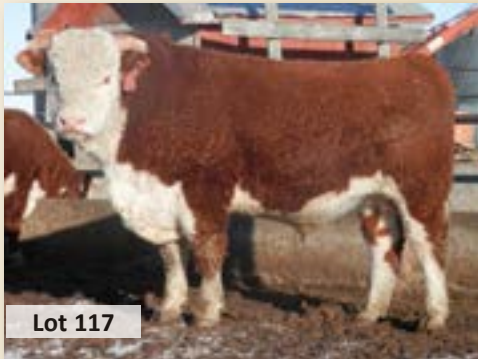
The Canadian Hereford Association recognizes those breeders who fully comply with the THE (Total Herd Evaluation) mandate of complete and accurate reporting of performance data on their animals.

We at Ulrich Herefords are pleased to have been awarded the status of Five-Star Breeder, the highest possible, and 1 of only 25 operations across Canada to do so! This simply means that we have completely & accurately reported 5 traits: Calving Ease, Birthweights, Weaning Weights, Yearling Weights and Ultrasound on our entire calf crop.

Thank you to the CHA for this recognition.



ULRICH HEREFORDS BULL SALE 2015



ULRICH HEREFORD RANCH INC.

Box 843, Claresholm, AB T0L 0T0



WWW.ULRICHHEREFORDS.COM

PRINTED IN CANADA / FOR FREE DISTRIBUTION