

5th Annual

ULRICH HEREFORDS

Bull & Female Sale



Lot #27



Lot #32



Lot #54



Lot #87



Lot #115



ALNK 114L



ALNK 81S

42

Registered Two Year Old
& Long Yearling Bulls

Special Feature

- 14 Registered Bred Heifers
- 9 Registered Young Bred Cows

Family Day

• February 21, 2011 •
@ Balog Auction • Lethbridge, AB
Sale: 1:00 p.m. • Join us for lunch at 12 o'clock Noon

Ulrich Bull Sale



ULRICH HEREFORDS BULL SALE

FEBRUARY 21 2011
MONDAY
Family Day!!

BALOG AUCTION • LETHBRIDGE, ALBERTA

Sale Time: 1:00 pm (MST) Social in Balog's Board Room Following the Sale

63 HEAD ON OFFER!

- 37 Coming Two Year Old Hereford Bulls
- 5 Long Yearling Hereford Bulls
- 12 Bred Registered Heifers
- 9 Young Registered Bred Cows

SALE DAY PHONES:

Balog Auction - 403-320-1980

Peter's Cell - 403-625-1036

Hans's Cell - 403-625-6629

SALE STAFF:

Bob BalogAuctioneer403-320-1980
 Brad DubeauRing Staff403-512-2235
 Louis BalogRing Staff403-320-1980

ACCOMMODATIONS:

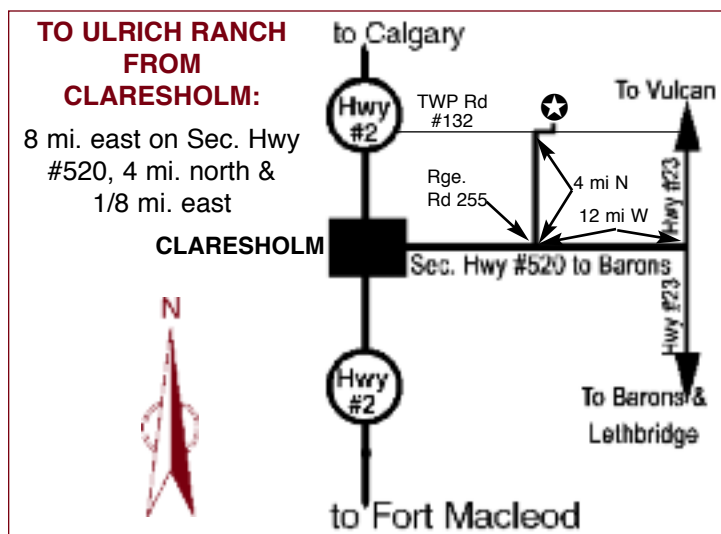
Ramada Inn403-380-5050
 2375 Mayor Magrath Drive S. - mention Balog Auction for special room rate

VIEWING THE BULLS:

We welcome you to stop by the ranch any time prior to Sale Day to view our operation and see the bulls.

PLEASE JOIN US EARLY SALE DAY:

For presale viewing followed by lunch at 12 o'clock NOON!



SPECIAL POINTS TO NOTE:

- No bulls sell at Calgary or Medicine Hat - *All of our best are in this sale!*
- All bulls are semen tested before sale
- **Credit of \$100** per bull to purchasers who take bulls from the sale.
- **Delivery:** Delivery to central points in Alberta at seller's convenience. Out of province purchases delivered by commercial hauler at shared cost.
- We strongly recommend that bulls be insured - an insurance agent will be available at the sale.
- **Flying In?** If flying into the Lethbridge Airport, call Balog Auction for pick-up: 1-403-320-1980.
- **Family Day:** Please bring your family to join us Sale Day / Family Day!
- **Supplemental Information:** *Ultrasound Information* has been collected on these bulls as yearlings and will be available sale day or can be obtained prior to the sale by calling Peter at 403-625-1036. **Complete EPD's** (beyond those shown in this catalogue) and **Carcass Info** is also available.
- **Sight Unseen Purchase Plan:** If you are unable to attend the sale, please contact us or any of the sale staff with instructions to purchase on your behalf.
- **Live Online Viewing of the Sale:** We would rather have you at the sale, but if you can't, enjoy this exciting new feature at: www.balogauction.com/live-sale.htm



For Catalogue or More Info:

ULRICH HEREFORD RANCH INC.

Box 843, Claresholm, AB

Peter Ulrich - Cell: 403-625-1036

Phone: 403-625-2434 Fax: 625-2399

Email: peter@ulrichherefords.com

Hans & Annette Ulrich - Ph: 403-625-2237

Catalogue Available Online in Full Color at:
www.ulrichherefords.com

(note - many of the dams are pictured on the site as well)

WELCOME TO THE BULL & FEMALE SALE

Welcome to the 5th Annual Ulrich Hereford Ranch Bull & Female Sale!!

We are pleased to send you this catalogue as our invitation for you to join us at our 5th Annual Bull & Female Sale on February 21, 2011 at Balog Auction in Lethbridge.

With the cow numbers in North America at a record low and the outlook for the future of the cattle industry so much better than what it has been for many years, it makes us very happy to offer you this group of industry-building bulls and females. Most of you know that our family has worked hard for many years to select for gainability, structural soundness, maternal strength and reasonable birth weights. Therefore we are confident that all the cattle in this consignment can have a positive influence in your herd.

This year we have included the top EPD percentiles to demonstrate how our animals rank within the Hereford breed. We faithfully report performance and ultrasound data and although we don't use bulls exclusively by numbers, we are pleased when the EPDs reflect the strengths of our program. All of the noted percentiles are the top 30% of the breed - many of them much higher!



So, on this Family Day 2011, we hope that you will be able to bring your family and join ours for lunch and for a visit before the sale on February 21!

Sincerely,
Peter and Hans & Annette Ulrich

Peter Ulrich

Ph: 403-625-2434

Cell: 403-625-1036

A Word From the Auctioneer....

BALOG AUCTION SERVICES INC.

Experience - Enthusiasm - Integrity - Ability

Box 786, Lethbridge, Alberta, Canada T1J 3Z6

Main #: (403) 320-1980 North America Toll Free: 1-877-320-1988

Fax: (403) 320-2660 Website: www.balogauction.com

E-mail: bob@balogauction.com

Friends and Fellow Cattlemen!

It is with a great deal of excitement and anticipation that we welcome you to the Peter Ulrich Production Sale!

In this sale we offer the results and production of one of the top performance herds on the continent! The sires and dams have proven themselves not only by the many tests they have endured, but more importantly, by the progeny they have produced!

Our Industry has reached a new and more exciting level! The future is tremendous and the offering of cattle from Peter Ulrich gives you the opportunity to be part of it. Take advantage!

Respectfully,

R.C. (Bob) Balog



*Ulrich Bull Sale
2010*



TERMS & CONDITIONS

TERMS - The terms of the sale are cash or cheque payable at par at Lethbridge, AB, on Sale Day. The right of property shall not pass until settlement is made. All settlements must be made with the clerks of the sale before any cattle will be released. For US export, USDA and individual state rules will apply.

BIDS - Every animal entering the sale ring will be sold to the highest bidder. A floor price will apply to each animal consigned.

DISPUTES - In case of disputes, bidding will be reopened between the parties involved. If no further bid is made, the buyer will be the person from whom the auctioneer accepted the last bid. The auctioneer's decision in such matters will be final.

PURCHASER'S RISK - Each animal becomes the risk of the purchaser as soon as sold.

ANNOUNCEMENTS - Errors discovered in the catalogue will be corrected by announcements from the Auction Stand at sale time and such corrections will take precedence over the printed matter in the catalogue.

CERTIFICATE OF REGISTRY - A certificate of registry duly transferred will be furnished to the buyer for each animal after settlement is made.

SHIPPING - Assistance will be given in making shipment after the sale, but no risk is assumed by Balog Auction, or the seller. *Delivery to central points in Alberta will be made at seller's convenience. Out-of-province purchases will be delivered by commercial hauler at shared cost.* Any additional expenses are the responsibility of the buyer, including duty, brokerage fees, etc.

BREEDER'S GUARANTEE - The consignors have done everything possible to assure you, the buyer, that every bull in this sale will be a breeder. A certified veterinarian has semen tested and physically evaluated every bull. However, should a problem arise, please inform the seller so further arrangements may be made.

ACCIDENTS - Although every precaution will be taken to protect the safety and comfort of buyers, neither the sales manager, auctioneer nor any owner assumes any responsibility in this matter and disclaims any liability, legal or otherwise, in the event of accident or loss of property.

LIABILITY - Balog Auction is acting as agent only and assumes no responsibility for representations made by the seller. Purchasers must look to the seller for fulfillment of all guarantees and representations made hereunder.

ULRICH HEREFORD REFERENCE SIRES

A

AGA 13G GENERAL 114L

C02795506 ALNK 114L FEBRUARY 22 2001

BW:	94
205:	687
365:	1207
'11 EPD's	
CE:	-8.3
BW:	7.1
WW:	49.0
YW:	90.1
MCE:	0.2
Milk:	25.5
TM:	50.0

GENERATOR STANDARD 10A
GEM GENERAL 13G
AD 75N LASS 31W

Pictured outside back cover

STANDRD LAD 656 4ET
AGA 656U MISS STANDARD ET 17H
AGA MISS 80S VOLTAGE ET 14X

SNS GENERATOR 28X
MISS 417 STAN SUPERB 7Y
MF STANDARD LAD 75N
COMMANDER LASS 14T

HI STANDARD LAD 20P
BELL L 60H DOMINO LASS 82K
LCI ET HIGH VOLTAGE 80S
MISS 51K BRITISHER AGA 61N

Top % Of Breed For: WW 30%, YW 10% Milk 10%, TM 10% SC 1%, MPI 3%

Our favourite Trait Leader was named the Southern Alberta Bull Spectacular "People's Choice" winner in 2002. Since then his progeny have won the same award & other honors. 114L's dam was a "Dam of Distinction" out of a "Dam of Great Distinction" out of our great foundation cow, 61N! 114L's females are incredible - femininity with thickness, volume, sound feet & legs and easy keeping. Stunning good looks plus heavy weights at 205 days & on, keeps 114L on top with the best avg YR indexes year after year.

B

AGA 4P RIBSTONE 81S

C02885450 ALNK 81S MARCH 11 2006

BW:	93
205:	748
365:	1097
'11 EPD's	
CE:	0.3
BW:	3.9
WW:	46.5
YW:	75.1
MCE:	2.3
Milk:	14.3
TM:	37.5

K 64H RIBSTONE LAD 157K
LCI 157K RIBSTONE 4P
LCI SUPERIOR GIRL 121H

Pictured outside back cover

AGA 1S OLD DOMINO 44K
AGA 44K MISS OLD DOMINO 252M
AGA 102E MISS EXTRA 190K

STANDARD 16E RIBSTONE 64H
K 61Z SUPER LADY 41G
JNHR DIAMOND 99D
LCI BIG REDS LASS 57A

HU WETMORE DOMINO 1S
AGA 656U MISS STANDARD ET 17H
FE 27A EXTRA 102E
AGA 189C MISS DOMINO 22F

Top % Of Breed For: MCE 20%, SC 4%, FMI 2%, MARB 15%

Grandsired by the sought-after K 64H RIBSTONE LAD 157K, this 81S inherited his deep rib and light birthweight, and as much or more substance & muscle! Added to the great paternal performance is the dam's (252M) contribution of compact size with quality & quantity of rich milk with teats nicely placed. She's known to produce thick, easy-fleshing offspring of great quality like 87W offered in this sale - a handsome participant in our Light Birthweight program.

C

S BIG OAK 20S ET

C02920660 20S FEBRUARY 07 2006

BW:	n/a
205:	n/a
365:	n/a
'11 EPD's	
CE:	1.8
BW:	6.0
WW:	51.6
YW:	96.6
MCE:	-0.7
Milk:	29.7
TM:	55.5

STANDARD 16E RIBSTONE 64H
K 64H RIBSTONE LAD 157K
K 61Z SUPER LADY 41G

LPG 82B STANDARD LAD 59K
S 59K LASS 36M
LPG DOMINO 41S LASS 34F

STANDARD RIBSTONE 16E
STANDARD LASS 23E
SNS SUPER PACE ET 61Z
K 58X MASTER LADY 89Z

LLL 77Y STD DOM 82B
LPG STANDARD DOMINO LASS 52H
LRD RED DOMINO 26Z
LPG 41S LASS 40D

Top % Of Breed For: CE 30%, WW 20%, YW 4%, Milk 2%, TM 2%, SC 2%, MPI 4%, FMI 1%, MARB 10%

20S packs a strong maternal pedigree plus Trait Leading EPDs for WN, YR, & TM! His sire is the K 64H RIBSTONE LAD 157K, an EPD Trait Leader for 9 traits, including carcass! This son demonstrates extra length and performance, along with eye-appeal, correctness, lots of hair & bone, and big testicles. Red & pigmented, his females have become nice young cows and weaned heavy calves! See Lots 10W, 15W (weighs over a ton), 30W, 33W, 37W & 5W (female)

D

CC 129D SUPERMAN 77J

C02733044 BXC 77J JANUARY 23 1999

BW:	101
205:	679
365:	1230
'11 EPD's	
CE:	0.3
BW:	5.5
WW:	53.6
YW:	74.6
MCE:	-1.9
Milk:	18.3
TM:	45.1

JDA 15W SKYWALKER 07Y
FE 07Y SUPER 129D
FE 412 DANDY 56X

DMF 81N STANDARD 42W
CC 42W JULIANA 66Z
CC ARROW BRITISHER LASS 47T

LCI SUPER VOLTAGE 15W
DOM HI STD MS COMMANDER 07N
OB DANDY
FE 39J STANDARD 30N

96 STANDARD ADVANCE 81N
DMF MISS 49N STAN 86T
ARROW C L1 DOM 115Z
CC BRITISHER 1G LASS 4L

Top % Of Breed For: WW 15%, TM 25%, MPI 15%, FMI 25%, MARB 5%

77J is a big, stout muscled bull with good feet and females that have lots of volume, are easy keeping and easy doing with good udders. We've been using this bull with great success in our herd and know of others who have been successful with these genetics as well. See his extremely good son in our sale - Lot 11.

E

AGA 21M STANMORE 95S

C02885457 ALNK 95S MARCH 16 2006

BW:	85
205:	737
365:	1045
'11 EPD's	
CE:	1.8
BW:	2.6
WW:	34.7
YW:	59.2
MCE:	2.3
Milk:	28.3
TM:	45.6

AGA 121G STANMORE 20J
AGA 20J STANMORE 21M
AGA 5C MISS ENERLAD 68K

Pictured outside back cover

STANDRD LAD 656 4ET
AGA 656 MISS STANDARD 69M
AGA 69G MISS EXTRA 10J

AGA 4016D STANMORE 121G
AGA 40E MISS STANMORE 80G
XTC 15Z ENERLAD STAN 5C
AGA 154F MISS BRITISHER 159H

HI STANDARD LAD 20P
BELL L 60H DOMINO LASS 82K
AGA 335C EXTRA 69G
AGA 67Z MISS CENTENNIAL 58E

Top % Of Breed For: CE 30%, Milk 3%, TM 25%, MCE 20%, STAY 2%, MPI 10%

Capable of stamping his well-marked offspring with the same good hair, deep rib, substance, nice top, extra thickness & performance, 95S's added bonus is easy calving and maternal assets (see EPDs). While sired by 21M, the "Calving Ease Specialist" with proven performance and leading EPD Traits (richer milk), 95S's dam is also outstanding - wide from the back, yet feminine and tidy on the front. Good feet, good udder & well-placed teats also helped assemble 95S. See Lot 28W & Lot 7 - bred AI

F

AGA 46E BRITISHER 32T

C02910227 ALNK 32T FEBRUARY 22 2007

BW:	66
205:	688
365:	951
'11 EPD's	
CE:	10.1
BW:	-4.1
WW:	20.7
YW:	26.5
MCE:	2.4
Milk:	17.6
TM:	28.0

DOMINO STANDARD DP LAD 45
DP BRITISHER AGA 46E
BRITISHER WETMORE LADY AGA 57

AGA 656 STANDARD ET 6N
AGA 6N MISS STANDARD 50R
AGA 97J MISS RED EXTRA 9N

RIBSTONE DOMINO LAD 1G
STANDARD E DOMINO 33R
JH REAL BRITISHER
DOUBLE MISS WETMORE AGA 61W

STANDRD LAD 656 4ET
AGA 335C MISS EXTRA 8G
AGA 22B BRIGADER 97J
AGA 13G MISS GENERAL 141L

Top % Of Breed For: CE 1%, BW 1%, MCE 20%, SC 15%, STAY 1%

32T progeny marbled #1, 2, & 5 in our herd, plus he's got great Calving Ease (+10.1) and BW (-4.1) EPDs. We used him as a yearling and all 17 calves were unassisted. His mother is an exceptionally correct female with great feet & udder. We raised his sire, 46E, selling many, many sons who produced outstanding easy keepers, easy fleshers and daughters who raised heavy calves in the fall, with excellent udder formation and teats small & well-placed. We anticipate his son 32T to meet his parents' expectations. See Lot #40, 48, 85, 105, 115, 122, & 123.

G

AGA 26R STANMORE 5T

C02903226 ALNK 5T FEBRUARY 15 2007

BW:	71
205:	646
365:	1012
'11 EPD's	
CE:	5.4
BW:	-1.9
WW:	21.3
YW:	41.6
MCE:	3.6
Milk:	26.3
TM:	37.0

AGA 20J STANMORE 21M
AGA 21M STANMORE 26R
AGA 91L MISS STANDARD 148N

Pictured outside back cover

AGA 22B BRIGADER 53L
AGA 53L MISS RED DOMINO 122R
AGA 656 MISS STANDARD 69M

AGA 121G STANMORE 20J
AGA 5C MISS ENERLAD 68K
AGA 191G STANDARD ET 91L
AGA 44C MISS SILVER 61G

CTY BRIGADER 22B
AGA 189C MISS DOMINO 4E
STANDRD LAD 656 4ET
AGA 69G MISS EXTRA 10J

Top % Of Breed For: CE 2%, BW 1%, Milk 5%, MCE 5%, STAY 1%, FMI 25%

The great 'Calving Ease Specialist', 21M, is a grand-sire of this bull so light or lighter calves can be expected from 5T, along with the vigour which is so important. This last year we calved out 17 and not one did we help - a great feeling! 5T's mother, 122R, is one of our finest young cows and raises top-notch calves every year. Her sire, 53L, is competing to join 114L & 21M as the best group of sires in the Ulrich herd! See Lot 75, 103, 117 and female exposure 702T.

H

CC 77J JARROD 26T

C02900019 BXC 26T JANUARY 28 2007

BW:	86
205:	739
365:	1144
'11 EPD's	
CE:	-1.8
BW:	4.4
WW:	50.9
YW:	87.9
MCE:	-0.1
Milk:	17.9
TM:	43.3

FE 07Y SUPER 129D
CC 129D SUPERMAN 77J
CC 42W JULIANA 66Z

Pictured outside back cover

SILVER 23K NEON 14N
CC 14N JOCELYN 33R
CC HB JOCELYN 97J

JDA 15W SKYWALKER 07Y
FE 412 DANDY 56X
DMF 81N STANDARD 42W
CC ARROW BRITISHER LASS 47T

SILVER 26E KNIGHT 23K
STD ENDEAVOR 55E GLITTER 63G
HH HOME BUILDER
CC DUKE'S JOCELYN 23Z

Top % Of Breed For: WW 25%, YW 15%, STAY 10%

Moderate birthweights, plus performance with good pigmentation means this outcross bull fits right into our program! His five females averaged 110 Weaning Indexes for 2010. His first females are calving after this sale and we are looking forward to seeing what they will produce for. See Lot 74, 79, and females exposed Lot 98T, 93U, 50T, 14R & 818U

ULRICH HEREFORD RANCH BULL SALE

I LFF 5L JACK HAMMER 26R

C02874859 ANJP 26R APRIL 07 2005

BW:	n/a
205:	n/a
365:	n/a
'11 EPD's	
CE:	-5.1
BW:	6.2
WW:	30.9
YW:	51.8
MCE:	-1.3
Milk:	2.4
TM:	17.9

DIAMOND-T 127C LAD 25J
DIAMOND-T 25J LAD 5L
DIAMOND-T DOM BRIT 5E

Pictured outside back cover

SJSL HI LITE SUPER LAD 3B
LFF 3B HI LITE EXTRA LASS 11E
LFF 16Z EXTRA LASS 3C

FE 184A STANDARD LAD 127C
DIAMOND-T 16X DERMOT LASS 354Z
SGC 14X STANDARD LAD 53A
TNT MISS DOM BRIT 249W

CANADIAN HI-LITE 63X
SJSL SUPER LAS 1Z
WINDY-HILL 203U EXTRA 16Z
LFF STANMORE LASS 12Z

A legacy of the Lloyd & Linda Fowlie herd, 26R breeds true to himself with length, correctness, pigment, and eye-appeal! His sire, 5L, won Reserve Grand Champion at the Cereal Bull Sale for good cattle people, Tim & Diane Westerlund. The dam was a favourite cow in the Fowlie herd and we are more than satisfied with how his heifers calved out and weaned last fall – there's more to come. We used a son, 87W, on our heifers and although one of our favourite bulls, he is on offer in this sale (lot 87) with a retained interest. See also Lot 111.

J CTY EASY 705T

C02937185 705 APRIL 09 2007

BW:	n/a
205:	n/a
365:	n/a
'11 EPD's	
CE:	4.3
BW:	2.6
WW:	29.6
YW:	36.7
MCE:	0.8
Milk:	20.8
TM:	35.6

SJSL HI 20 STAND LAD 10S
AGA 10S STANDARD 137Y
GU MISS 46E BRITISHER 10K

SNS SUPER SILVER 35D
COURTNEY LASS J921
COURTNEY LASS E522

HI STANDARD LAD 20P
STANDARD L1 LASS 10G
DP BRITISHER AGA 46E
GU MISS 50Y 97F

SNS SILVER PRAIRIE 50B
SNS 112N SUPER GIRL 26Y
LCI YOUNG RANGER 91B
COURTNEY LASS C322

Top % Of Breed For: CE 5%, Milk 30%, STAY 5%, MPI 25%
705 is leaving us very impressive offspring. His sire, 137Y, was raised on our ranch and is now an AHA trait leader for Calving Ease, Birth Weight, Milk, & Ribeye Area. 137Y bred cows well into his teen years and his daughters and granddaughters are producing exceptionally well (just talk to Courtney Herefords or Ace Diemert from Montana). We expect 705 to continue that reputation. His calves look very promising. See Lot 901, 908, 909, 916, 920 and heifer exposures Lot 9W & 47W.

HERD HEALTH

CLARESHOLM VETERINARY SERVICES, LTD.

Box 2350, Claresholm AB T0L 0T0 (403) 625-3677

C. FANCY, DVM R. CHISHOLM, DVM
K. WRIGHT, DVM M. HUET, DVM

January 2011

Claresholm Veterinary Service Ltd. has been providing veterinary service and consultation for over 10 years to Ulrich Hereford Ranch. The majority of the service consists of breeding soundness evaluations of the bulls and pregnancy testing in the cow herd.

Health problems are minimized with a good vaccination program and excellent management. Calves are vaccinated with Pfizer Gold (the comprehensive program to protect against pneumonia and BVD and IBR viruses) spring and fall, replacement heifers and bulls also receive Bovi-shield Gold FP5-VL5 in the spring before breeding. The cow herd also receives Bovi-shield Gold FP5-VL5 prior to calving, along with a scour prevention vaccine (Jencine ERC).

Claresholm Veterinary Services, Ltd. is proud to be associated with the Ulrich Hereford Ranch and their cattle operation!

WHAT IS AN EPD?

Expected Progeny Differences (EPDs) are genetic predictions producers can use when making selection decisions. These values are available on performance animals from breed associations. ***It is important to understand you cannot compare EPDs between breeds, only within a breed.*** A buyer is always advised to use more than just the EPDs regardless of accuracy when making purchase decisions.

An Expected Progeny Difference (EPD) is a measure of the genetic merit of an animal using relevant performance and pedigree information. EPDs are expressed in the units of measure. For example, birth weight is expressed in pounds, and rib-eye area is expressed in square inches.

EPDs come from performance data. Producers submit data on their cattle. From this data, researchers look at the differences between animals raised in the same environment (contemporary groups) and ascertain the portion of that difference that is due to genetics (heritability). Also included in this is how the different traits relate to each other and interact together (correlations). They can then directly compare genetic differences among animals using the pedigree information contained in the CHA and AHA registries. The result is a value that can be directly compared between animals and across environments, an EPD.

EPD'S USED IN THIS CATALOGUE

Calving Ease EPD (CE) - calculated using birth weight and calving ease score information. Calving ease EPDs represent the ease with which progeny of an animal are born to first calf heifers. The EPD is expressed as a percent probability, with a higher value representing calves with a higher probability of being born unassisted.

Birth Weight EPD (BW) - is an indicator of calving ease. Higher birth weight EPDs usually indicates more calving difficulty.

Weaning Weight EPD (WW) - reflects progeny growth differences up to 205-days

Yearling Weight EPD (YW) - reflects progeny growth differences through to 365-days.

Milk EPD (Milk) - indicates the ability of a sire's daughters to provide their calves with an environment that encourages growth from birth to weaning, through mothering ability and milk production. This EPD is expressed in the expected difference in pounds of calf at weaning.

Total Maternal EPD (TM) - also known as Milk + Growth, this EPD combines the milk EPD plus 1/2 the Weaning Weight EPD. It is expressed in pounds of calf weaned at 205-Days and combines the genetics for pre-weaning growth and the influence of the maternal environment on the weaning weight of the daughter's progeny.

Maternal Calving Ease EPD (MCE) - represents the ease with which a sire's daughters will calve as first calf heifers, when compared to daughters of other sires. The EPD is expressed as a percent probability, with a higher value representing daughters with a higher probability of unassisted calving.

COMPARABILITY OF EPDS

EPDs from Hereford animals are directly comparable to other Herefords in North America, due to the inclusion of data from both the American Hereford Association and the Canadian Hereford Association. As well, ***it is important to remember that Hereford EPDs, are NOT directly comparable to EPDs produced by different breeds, such as Angus or Simmental.***

Please Note!!

Pictures of the dams of many of the sale bulls, as well as updated sale information and a downloadable version of this catalogue in full color is available at our website:

www.ulrichherefords.com

KEY TO PERFORMANCE TERMS USED HEREIN:

BWActual Birth Weight in Pounds
205:.....Weaning Weight in lbs adjusted to 205 Days
1/22:Actual Weight in lbs. on January 22, 2011
PictureThe animal is pictured - picture can be found on the indicated catalogue cover

ULRICH HEREFORD RANCH COMING 2'S

10

AGA 20S WISE OAK 10W

C02930185 ALNK 10W MARCH 03 2009

BW:	94
205:	670
1/22:	1757
'11 EPD's	
CE:	0.8
BW:	4.7
WW:	40.9
YW:	68.2
MCE:	-1.3
Milk:	23.1
TM:	43.5

K 64H RIBSTONE LAD 157K
S BIG OAK 20S ET
S 59K LASS 36M

Pictured inside front cover

STANDRD LAD 656 4ET
AGA 656 MISS STANDARD ET 85M
AGA 22B MISS BRIGADER 511E

Top % Of Breed For: Milk 20%, SC 15%, FMI 10%, Fat 10%

Here's a son of S BIG OAK 20S who's known for leaving straight length & thick, heavy bones over excellent feet. Check out Big Oak's trait leading EPDs... On the dam's side, 85M, has first-rate conformation and soundness. Her four nice cups have produced rich milk for many outstanding calves including her 2009 calf traded to Courtney Herefords of Alzada MT for CTY EASY 705T, our new herd sire. Courtney's are really pleased with their deal, as 49U has produced an excellent growthy set of calves for them.

STANDARD 16E RIBSTONE 64H
K 61Z SUPER LADY 41G
LPG 82B STANDARD LAD 59K
LPG DOMINO 41S LASS 34F

HI STANDARD LAD 20P
BELL L 60H DOMINO LASS 82K
CTY BRIGADER 22B
AGA MISS 42X STANMORE 94Z

19

AGA 114L GENERAL 19W

C02931285 ALNK 19W MARCH 09 2009

BW:	118
205:	751
1/22:	1898
'11 EPD's	
CE:	-6.3
BW:	8.4
WW:	52.5
YW:	91.6
MCE:	-0.9
Milk:	22.5
TM:	48.8

GEM GENERAL 13G
AGA 13G GENERAL 114L
AGA 656U MISS STANDARD ET 17H

SFL 38E SILVER PRIDE 35J
AGA 35J MISS SILVER PRIDE 69N
AGA 4016D MISS STANMORE 24G

Top % Of Breed For: WW 20%, YW 10%, Milk 20%, TM 15%, SC 4%, MPI 10%

Here's a well-balanced son of 114L, wide & long, with all of his performance and pigmentation including his large red testicles! The mother, 69N, contributes a great pedigree and her thick deep genetics can calve even the heavy calves unassisted and feed them from a beautiful flat bag and well-placed teats.

GENERATOR STANDARD 10A
AD 75N LASS 31W
STANDRD LAD 656 4ET
AGA MISS 80S VOLTAGE ET 14X

MARG 50B SILVER PRIDE 38E
SFL MISS GENERATOR 15D
CTY K STANMORE 4016D
AGA 303Y MISS STANDARD 141E

11

AGA 77J SUPERMAN WINS 11W

C02930186 ALNK 11W MARCH 04 2009

BW:	106
205:	757
1/22:	1944
'11 EPD's	
CE:	-2.5
BW:	6.9
WW:	54.3
YW:	82.4
MCE:	-1.4
Milk:	17.7
TM:	44.9

FE 07Y SUPER 129D
CC 129D SUPERMAN 77J
CC 42W JULIANA 66Z

Pictured inside front cover

AGA 656U STANDARD ET 124J
AGA 124J MISS STANDARD 9L
AGA K58 MISS STANMORE 38B

Top % Of Breed For: WW 10%, YW 25%, TM 30%, MPI 25%, MARB 15%

Superman wins again! Here's a SUPERMAN 77J son designed to produce pounds of meat with depth & great quarters. His mother is a daughter of 124J, a bull we raised and who has produced tremendous females and sires. This daughter (dam of 11W) carries the nice, tucked udder with well-placed teats, curly hair, great conformation and provides a moderate birth weight for calves with excellent performance. This 11W is a great all-around bull! (Retaining semen interest.)

JDA 15W SKYWALKER 07Y
FE 412 DANDY 56X
DMF 81N STANDARD 42W
CC ARROW BRITISHER LASS 47T

STANDRD LAD 656 4ET
AGA MISS 80S VOLTAGE ET 14X
COURT STANMORE K58
AGA MISS 49N STANDARD 129Z

21

AGA 81S RIBSTONE 21W

C02931286 ALNK 21W MARCH 10 2009

BW:	92
205:	690
1/22:	1952
'11 EPD's	
CE:	1.1
BW:	3.9
WW:	39.4
YW:	69.0
MCE:	0.2
Milk:	15.6
TM:	35.3

LCI 157K RIBSTONE 4P
AGA 4P RIBSTONE 81S
AGA 44K MISS OLD DOMINO 252M

Pictured inside front cover

STANDRD LAD 656 4ET
AGA 656 MISS STANDARD ET 17N
AGA 335C MISS EXTRA 8G

Top % Of Breed For: SC 10%, FMI 1%

81S passes on his deep, wide quarters, slender neck & fine head to this son, 21W. Length and solid feet are contributed by the dam, along with 656 in the pedigree, known for his performance and beautiful cows. Rounding out the maternal pedigree is 8G, a Dam of Great Distinction. The paternal side includes the likes of Carcass EPD leader, 157K, and 1S OLD DOMINO, the milk & meat specialist! His pedigree alone makes 21W a dominant individual!

K 64H RIBSTONE LAD 157K
LCI SUPERIOR GIRL 121H
AGA 1S OLD DOMINO 44K
AGA 102E MISS EXTRA 190K

HI STANDARD LAD 20P
BELL L 60H DOMINO LASS 82K
CTY EXTRA 335C
AGA 67Z MISS CENTENNIAL 81D

12

AGA 114L GENERAL 12W

C02930187 ALNK 12W MARCH 04 2009

BW:	101
205:	839
1/22:	1907
'11 EPD's	
CE:	6.1
BW:	7.1
WW:	57.6
YW:	94.7
MCE:	-0.2
Milk:	22.7
TM:	51.5

GEM GENERAL 13G
AGA 13G GENERAL 114L
AGA 656U MISS STANDARD ET 17H

Pictured inside front cover

AGA 4016D STANMORE 4K
AGA 4K MISS STANMORE 103M
AGA 277D MISS STANDARD 816H

Top % Of Breed For: WW 5%, YW 5%, Milk 20%, TM 10%, SC 3%, MPI 10%

Here's a deep, thick son of 114L with the familiar wide top! (Weaning 2nd at 839 adj lbs, ADG 3.61 and WPGA 4.25.) His dam, 103M, also makes an excellent contribution as her 3 male progeny avg 107.7 WN index and her 3 heifer calves avg 112.3 WN index. She's a roomy cow with feminine features and plentiful milk.

GENERATOR STANDARD 10A
AD 75N LASS 31W
STANDRD LAD 656 4ET
AGA MISS 80S VOLTAGE ET 14X

CTY K STANMORE 4016D
AGA 67Z MISS CENTENNIAL 52D
BAR-OM 656 ST COMMAND LAD 277D
AGA 303Y MISS STANDARD 140B

22

AGA 81S RIBSTONE 22W

C02931570 ALNK 22W MARCH 11 2009

BW:	95
205:	579
1/22:	1765
'11 EPD's	
CE:	-2.4
BW:	5.2
WW:	32.6
YW:	62.9
MCE:	0.8
Milk:	10.9
TM:	27.2

LCI 157K RIBSTONE 4P
AGA 4P RIBSTONE 81S
AGA 44K MISS OLD DOMINO 252M

Pictured inside front cover

AGA 44C SILVER 167L
AGA 167L MISS SILVER 106R
AGA 277D MISS STANDARD 830H

Top % Of Breed For: FMI 15%, MARB 25%

Looking for marbling? This fella ranked 7/42 (Index 121). His sire, 81S, is known to stamp his offspring with great Marbling (daughters avg index is 109 and sons avg index is 106)! And not just numbers, 81S passes on docility, depth, thickness, a wide loin and combined with a complete and feminine cow, produced a well-balanced individual here in 22W.

K 64H RIBSTONE LAD 157K
LCI SUPERIOR GIRL 121H
AGA 1S OLD DOMINO 44K
AGA 102E MISS EXTRA 190K

SNS SILVER PRINCE 44C
MISS 95J STANDARD AGA ET 3X
BAR-OM 656 ST COMMAND LAD 277D
AGA MISS LIEUTENANT 36A

15

AGA 20S WORTHY OAK 15W

C02930934 ALNK 15W MARCH 06 2009

BW:	100
205:	783
1/22:	2012
'11 EPD's	
CE:	0.3
BW:	6.2
WW:	56.0
YW:	103.7
MCE:	-0.9
Milk:	24.8
TM:	52.8

K 64H RIBSTONE LAD 157K
S BIG OAK 20S ET
S 59K LASS 36M

Pictured inside front cover

CTY BRIGADER 22B
AGA 22B MISS RED DOMINO 22R
AGA 10K MISS STANDARD 230M

Top % Of Breed For: WW 10%, YW 1%, Milk 10%, TM 5%, SC 10%, MPI 5%, FMI 5%, REA 15%

Weaning 6th and Yearling 1st (see wts) this worthy fella is a full brother to 30U, sold to Robert Truthwaite of MB, who loves the length and growth of his calves. His grandsire is the great 157K, who leads EPDs in 9 CHA traits (including MPI & TM) and 12 AHA traits! Adding to this paternal power, is 15W's beautiful mother, 22R, an ideal cow with 4 pretty cups and small well-placed teats to maximize ease of suckling her rich tasty milk.

STANDARD 16E RIBSTONE 64H
K 61Z SUPER LADY 41G
LPG 82B STANDARD LAD 59K
LPG DOMINO 41S LASS 34F

BAR PIPE BRIGADIER 19Y
LADY 66J B DOM 509
AGA 34Z STANDARD ET 10K
AGA 277D MISS STANDARD 830H

27

AGA 114L GENERAL WATTS 27W

C02931576 ALNK 27W MARCH 13 2009

BW:	105
205:	755
1/22:	1912
'11 EPD's	
CE:	-3.3
BW:	6.3
WW:	41.4
YW:	75.2
MCE:	-0.5
Milk:	24.6
TM:	45.3

GEM GENERAL 13G
AGA 13G GENERAL 114L
AGA 656U MISS STANDARD ET 17H

Pictured on front cover

AGA 22B BRIGADER 97J
AGA 97J MISS RED EXTRA 237M
AGA 3G MISS DON DANDY ET 135K

Top % Of Breed For: Milk 10%, TM 25%, SC 10%, MPI 30%, FMI 15%

Golden curly hair, deep & wide loin, red & pigmented, and even a right goggle eye - Watt a bull!!! Such a great combination, we've mated 114L with 237M five times. One of these full brothers went to Coulee Crest in 2008. 237M is a Dam of Distinction, (male progeny avg index 108.7 and one female indexing 114), every year bringing home a heavy, eye-appealing calf! The maternal grandsire, 97J was a curly red heifer bull, really sound, who made pretty cows with lots of rich milk!

GENERATOR STANDARD 10A
AD 75N LASS 31W
STANDRD LAD 656 4ET
AGA MISS 80S VOLTAGE ET 14X

CTY BRIGADER 22B
AGA 335C MISS EXTRA 8G
DONORAH 412 DANDY LAD 3G
SNS GENERATOR'S LADY 21A

ULRICH HEREFORD RANCH COMING 2'S

28

AGA 95S STANMORE II 28W

C02937182 ALNK 28W MARCH 13 2009

BW:	84
205:	632
1/22:	1814
'11 EPD's	
CE:	4.1
BW:	0.5
WW:	27.2
YW:	48.6
MCE:	1.5
Milk:	21.6
TM:	35.2

AGA 20J STANMORE 21M
AGA 21M STANMORE 95S
 AGA 656 MISS STANDARD 69M
Pictured inside front cover
 SJSL HI 20 STAND LAD 10S
AGA 10S STAND LASS 77R
 AGA 189C MISS DOMINO 42E

AGA 121G STANMORE 20J
 AGA 5C MISS ENERLAD 68K
 STANDRD LAD 656 4ET
 AGA 69G MISS EXTRA 10J
 HI STANDARD LAD 20P
 STANDARD L1 LASS 10G
 AGA 28Z DOMINO 189C
 AGA MISS CENTENNIAL 62C

Top % Of Breed For: CE 5%, BW 5%, Milk 25%, STAY 1%
 28W was born 84 lbs, a grandson of 21M – the impressive Light Birthweight specialist with high performance too (square & thick). 21M is a BW Trait Leader with great Calving Ease, MPI & FMI numbers too! 28W's dam, 77R, shares the same sire (10S) as the home-raised 137Y (multiple EPD trait leader) – this pedigree of longevity counts for both looks and profit!

33

AGA 20S BIG OAK 33W

C02932420 ALNK 33W MARCH 17 2009

BW:	78
205:	648
1/22:	1680
'11 EPD's	
CE:	4.8
BW:	0.7
WW:	35.3
YW:	58.5
MCE:	1.0
Milk:	26.9
TM:	44.6

K 64H RIBSTONE LAD 157K
S BIG OAK 20S ET
 S 59K LASS 36M
Pictured inside front cover
 CTY EXTRA 335C
AGA 335C MISS EXTRA 8G
 AGA 67Z MISS CENTENNIAL 81D

STANDARD 16E RIBSTONE 64H
 K 61Z SUPER LADY 41G
 LPG 82B STANDARD LAD 59K
 LPG DOMINO 41S LASS 34F
 BP 203U EXTRA 18A
 REAL PRINCESS Y953
 SNS CENTENNIAL ET 67Z
 AGA MISS 47F DOMINO 7Y

Top % Of Breed For: CE 3%, BW 10%, Milk 10%, TM 30%, SC 15%, FMI 3%, MARB 20%
 Red, red, red with curly thick haircoat and long strides - this bull marches in from a line of beautiful females. He's got BIG OAK on the top and 8G, a Dam of Great Distinction, on the bottom of his pedigree. His sons promise to grow & gain thanks to BIG OAK's FMI (183.8) and the weaning & yearling performance of the dam 8G who was easy keeping in the field and left many herd sires in the industry.

29

AGA 114L GENEROSITY 29W

C02932120 ALNK 29W MARCH 15 2009

BW:	112
205:	792
1/22:	1842
'11 EPD's	
CE:	-5.7
BW:	7.3
WW:	49.4
YW:	85.1
MCE:	-0.1
Milk:	24.4
TM:	49.1

GEM GENERAL 13G
AGA 13G GENERAL 114L
 AGA 656U MISS STANDARD ET 17H
Pictured inside front cover
 AGA 34Z STANDARD ET 10K
AGA 10K MISS STANDARD 220M
 AGA 22B MISS BRIGADER ET 126G

GENERATOR STANDARD 10A
 AD 75N LASS 31W
 STANDRD LAD 656 4ET
 AGA MISS 80S VOLTAGE ET 14X
 PDHR 3X HI STANDARD 34Z
 AGA 22B MISS BRIGADER 511E
 CTY BRIGADER 22B
 MISS 51K BRITISHER AGA 61N

Top % Of Breed For: WW 30%, YW 20%, Milk 10%, TM 10%, SC 10%, MPI 20%, FMI 15%
 29W comes complete with 114L generosity and was a delight to watch growing up! Three full brothers that sold to Kozlinski, Dugdale, & White Lake Colony have been admired and sought after for their powerful performance, correctness, and pedigree with pigmentation! Weaning measured 4.10 WPDA and ultrasound measured 64.7 Lean Meat Yield!

35

AGA 81S RIBSTONE 35W

C02932422 ALNK 35W MARCH 17 2009

BW:	104
205:	730
1/22:	1936
'11 EPD's	
CE:	-2.0
BW:	6.3
WW:	47.0
YW:	76.9
MCE:	1.4
Milk:	13.7
TM:	37.2

LCI 157K RIBSTONE 4P
AGA 4P RIBSTONE 81S
 AGA 44K MISS OLD DOMINO 252M
Pictured inside front cover
 STANDRD LAD 656 4ET
AGA 656U MISS STANDARD 45K
 AGA 40Y MISS BRITISHER 88F

K 64H RIBSTONE LAD 157K
 LCI SUPERIOR GIRL 121H
 AGA 1S OLD DOMINO 44K
 AGA 102E MISS EXTRA 190K
 HI STANDARD LAD 20P
 BELL L 60H DOMINO LASS 82K
 AGA 6U BRITISHER ET 40Y
 AGA 303Y MISS STANDARD 67C

Top % Of Breed For: SC 10%, FMI 1%
 Ribeye index 114, Rump Index 157, Rib Fat 140 - This is the kind of performance generated by 81S. His progeny, 35W, comes with volume, thick quarters, and a wide top.
 The dam, 45K, is a daughter of the outstanding 656 and brings a bottom side of longevity plus excellent hair, thickness, and a nice tight udder with short teats, great fertility and femininity.

30

AGA 20S BIG OAK WEDGE 30W

C02932135 ALNK 30W MARCH 16 2009

BW:	107
205:	767
1/22:	1888
'11 EPD's	
CE:	-0.2
BW:	6.6
WW:	49.0
YW:	84.1
MCE:	-1.9
Milk:	23.2
TM:	47.7

K 64H RIBSTONE LAD 157K
S BIG OAK 20S ET
 S 59K LASS 36M
Pictured inside front cover
 STANDRD LAD 656 4ET
AGA 656 MISS STANDARD ET 106M
 AGA 22B MISS BRIGADER 511E

STANDARD 16E RIBSTONE 64H
 K 61Z SUPER LADY 41G
 LPG 82B STANDARD LAD 59K
 LPG DOMINO 41S LASS 34F
 HI STANDARD LAD 20P
 BELL L 60H DOMINO LASS 82K
 CTY BRIGADER 22B
 AGA MISS 42X STANMORE 94Z

Top % Of Breed For: WW 30%, YW 20%, Milk 15%, TM 20%, SC 10%, MPI 30%, FMI 1%
 A wedge of a bull, 30W has the length, thick top and performance from his sire BIG OAK and his mother, 106M is pretty as a lark - feminine yet thick, well-place teats – a solid cow! 30W has the potential to raise powerful steers and highly productive females. His 65% Lean Meat Yield tied for 1st place in our bulls

37

AGA 20S WHISTLING OAK ET 37W

C02937183 ALNK 37W MARCH 18 2009

BW:	81
205:	640
1/22:	1847
'11 EPD's	
CE:	1.8
BW:	4.9
WW:	42.3
YW:	81.7
MCE:	-1.6
Milk:	20.3
TM:	41.5

K 64H RIBSTONE LAD 157K
S BIG OAK 20S ET
 S 59K LASS 36M
Pictured inside front cover
 SGC 14X STANDARD LAD 53A
AGA 53A MISS STANDARD ET 152M
 AGA 22B MISS BRIGADER 511E

STANDARD 16E RIBSTONE 64H
 K 61Z SUPER LADY 41G
 LPG 82B STANDARD LAD 59K
 LPG DOMINO 41S LASS 34F
 STANDARD K LAD 14X
 SGC BRIT STANDARD LASS 1U
 CTY BRIGADER 22B
 AGA MISS 42X STANMORE 94Z

Top % Of Breed For: CE 30%, YW 25%, Milk 30%, SC 25%
 Here's one to whistle at! This ET with the big testicles calls 511E grand-dam and STANDARD K LAD 14X great grandsire. Many people loved 14X who later went to Ochs Bros and did exceptionally well there. S BIG OAK 20S ET contributes 37W's paternal side with extra top & quarters, excellent hair coat, red, moderate frame but powerful nonetheless. He leaves beautiful cows, udders & milk as seen by the first set of 20S heifers that calved last spring. 37W can be used for heifers! Retaining semen interest.

32

AGA 114L GENERAL WHOPPER 32W

C02932137 ALNK 32W MARCH 16 2009

BW:	105
205:	693
1/22:	1788
'11 EPD's	
CE:	-6.1
BW:	7.1
WW:	50.1
YW:	85.2
MCE:	-0.8
Milk:	18.8
TM:	43.9

GEM GENERAL 13G
AGA 13G GENERAL 114L
 AGA 656U MISS STANDARD ET 17H
Pictured on front cover
 AGA 22B BRIGADER 53L
AGA 53L MISS RED DOMINO 93S
 AGA 44C MISS SILVER 34L

GENERATOR STANDARD 10A
 AD 75N LASS 31W
 STANDRD LAD 656 4ET
 AGA MISS 80S VOLTAGE ET 14X
 CTY BRIGADER 22B
 AGA 189C MISS DOMINO 4E
 SNS SILVER PRINCE 44C
 AGA 277D MISS STANDARD 830H

Top % Of Breed For: WW 25%, YW 20%, SC 15%
 Whopping Rib-Eye (indexing 117), red eyes, red testicles, red all around, here's a 114L son out of 93S, a daughter of 53L (grand champion at Medicine Hat in 2006), known for leaving beautiful, extra easy-keeping females with great udders, feet and structure to raise correct calves like 32W! (retaining semen interest)

40

AGA 32T BRITISHER 40W

C02932425 ALNK 40W MARCH 20 2009

BW:	60
205:	682
1/22:	1752
'11 EPD's	
CE:	9.3
BW:	-4.2
WW:	23.8
YW:	39.0
MCE:	3.5
Milk:	17.8
TM:	29.7

DP BRITISHER AGA 46E
AGA 46E BRITISHER 32T
 AGA 6N MISS STANDARD 50R
Pictured inside front cover
 AGA 46E BRITISHER 47R
AGA 47R MISS BRITISHER 1T
 AGA 21M MISS STANMORE 19R

DOMINO STANDARD DP LAD 45
 BRITISHER WETMORE LADY AGA 5A
 AGA 656 STANDARD ET 6N
 AGA 97J MISS RED EXTRA 9N
 DP BRITISHER AGA 46E
 AGA 167L MISS SILVER 125N
 AGA 20J STANMORE 21M
 AGA 53L MISS RED DOMINO 218N

Top % Of Breed For: CE 20%, BW 20%, SC 15%, STAY 1%, MARB 10%
 No doubt a heifer bull, this fella was born a little calf (60 lbs) sired by 32T, with lots of vigour and lots of life! He has now grown big & strong, thick with a wide top and is performing nicely. The dam's dark woolly haircoat clothes a pedigree with the home-raised legend 46E on the top for easy calving, and 21M on the bottom for not just calving ease & BW, but Milk, TM, & MARB. 1T, herself, weighed 627 adj lbs (Index 113) at Weaning. Check out her EPDs: CE +5.4, BW -0.5, MARB +0.14

ULRICH HEREFORD RANCH COMING 2'S

44

AGA 114L GENERAL WHEELER 44W

C02932486 ALNK 44W MARCH 23 2009

BW:	110
205:	758
1/22:	1818
'11 EPD's	
CE:	-7.9
BW:	8.8
WW:	48.9
YW:	79.4
MCE:	-1.0
Milk:	20.7
TM:	45.2

GEM GENERAL 13G
AGA 13G GENERAL 114L
 AGA 656U MISS STANDARD ET 17H
Pictured inside front cover
 HLAH 90Z MARK DONALD 10B
AGA 10B MISS BEAR 170M
 AGA 656U MISS STANDARD 135J
 GENERATOR STANDARD 10A
 AD 75N LASS 31W
 STANDRD LAD 656 4ET
 AGA MISS 80S VOLTAGE ET 14X
 BP MARK DONALD 90Z
 HLAH 42L STANDARD LADY 44X
 STANDRD LAD 656 4ET
 AGA 852 MISS STANMORE 22C

Top % Of Breed For: WW 30%, YW 30%, Milk 30%, TM 25%, SC 4%
 Here's a beautiful, mossy yellow hair coat outfitting a long, correct body! Mom is a Bear cow by a 10B sire, who left impressive quarters and tops. 114L works well in this combination - proven by full brothers working hard at Rogers Ranch of High River, AB, and Haraga Farms of Skiff, AB. (Congratulations to the Ken & Tyler families on your 2010 Commercial Ranch Award!)

48

AGA 32T BRITISHER 48W

C02932492 ALNK 48W MARCH 25 2009

BW:	73
205:	634
1/22:	1614
'11 EPD's	
CE:	4.5
BW:	-0.6
WW:	23.9
YW:	36.4
MCE:	2.2
Milk:	13.3
TM:	25.3

DP BRITISHER AGA 46E
AGA 46E BRITISHER 32T
 AGA 6N MISS STANDARD 50R
Pictured inside front cover
 C 82F MICKS KAPTAIN 82K
AGA 82K MISS KAPTAIN ET 25T
 AGA 85A MISS BRITISHER 74J
 DOMINO STANDARD DP LAD 45
 BRITISHER WETMORE LADY AGA 5A
 AGA 656 STANDARD ET 6N
 AGA 97J MISS RED EXTRA 9N
 STANDARD 85A DOMINO 82F
 AC MISS 359 ROBINSON 63F
 LLL FE STD BRIT 85A
 AGA 852 MISS STANMORE ET 12C

Top % Of Breed For: CE 4%, BW 2%, MCE 20%, STAY 5%, MARB 20%
 This heifer bull (CE EPD +4.5 BW -0.6) is from 32T and a Kaptain 82K mother! A 73 lb birthweight is a great start, and the 119 MARB index shows promise at the finish. With a docile attitude, he stands proud & correct with a curly mossy haircoat covering his thickness behind & over loins. His dam, 25T is an ET from the yellow mossy haired 74J - feminine, deep, easy-keeping, lots of volume. Her sire is the well-known Lawrence Lehr 85A bull (now deceased) and her tight udder has small teats perfectly placed.

52

AGA 81S RIBSTONE 52W

C02932500 ALNK 52W MARCH 25 2009

BW:	89
205:	682
1/22:	1915
'11 EPD's	
CE:	-1.2
BW:	3.5
WW:	41.8
YW:	77.5
MCE:	1.8
Milk:	18.1
TM:	39.0

LCI 157K RIBSTONE 4P
AGA 4P RIBSTONE 81S
 AGA 44K MISS OLD DOMINO 252M
Pictured inside front cover
 AGA 13G GENERAL 114L
AGA 114L MISS GENERAL 126R
 AGA 97J MISS BRIGADER 75L
 K 64H RIBSTONE LAD 157K
 LCI SUPERIOR GIRL 121H
 AGA 1S OLD DOMINO 44K
 AGA 102E MISS EXTRA 190K
 GEM GENERAL 13G
 AGA 656U MISS STANDARD ET 17H
 AGA 22B BRIGADER 97J
 AGA 33G MISS STANDARD 83J

Top % Of Breed For: MCE 30%, SC 4%, FMI 10%, MARB 25%
 Born at 89 lbs, here's another 81S son, deep & long, red & docile, a broad body over excellent feet and good performance (combines genetics of both 81S & 114L!) 126R contributes her correctness, volume galore, and lots of milk from a tight bag.
 We'll use her son (by 5T) on heifers this spring - she's one of the good ones!

54

AGA 81S RIBSTONE 54W

C02932502 ALNK 54W MARCH 25 2009

BW:	105
205:	702
1/22:	1975
'11 EPD's	
CE:	-1.2
BW:	6.2
WW:	46.9
YW:	89.6
MCE:	0.5
Milk:	19.0
TM:	42.5

LCI 157K RIBSTONE 4P
AGA 4P RIBSTONE 81S
 AGA 44K MISS OLD DOMINO 252M
Pictured on front cover
 AGA 22B BRIGADER 97J
AGA 97J MISS RED EXTRA 35R
 AGA 114L MISS GENERAL 103N
 K 64H RIBSTONE LAD 157K
 LCI SUPERIOR GIRL 121H
 AGA 1S OLD DOMINO 44K
 AGA 102E MISS EXTRA 190K
 CTY BRIGADER 22B
 AGA 335C MISS EXTRA 8G
 AGA 13G GENERAL 114L
 AGA 96H MISS STANDARD 182K

Top % Of Breed For: YW 10%, SC 10%, MPI 20%, FMI 1%, MARB 25%
 Presenting the 2nd highest performing "W" calf (205-365 days of age), here's 54W who throws in an outstanding 178.7 FMI and great MPI (+150.1) for good measure! Not only is 54W in this sale, but so is his dam (35R), her daughter (128T) and her 1st calf daughter (61W) - 3 generations! The mother, 35R, raised one of the best bull calves in the bunch and 61W's a fine heifer too. (72 lb BW, WW indx 107; YW Indx 117). 128T's 2010 heifer has a fine WN index (115) and will be in our replacement program.

55

AGA 114L GENERAL 55W

C02932503 ALNK 55W MARCH 26 2009

BW:	110
205:	680
1/22:	1841
'11 EPD's	
CE:	-4.8
BW:	8.1
WW:	47.2
YW:	96.2
MCE:	-2.3
Milk:	17.8
TM:	41.4

GEM GENERAL 13G
AGA 13G GENERAL 114L
 AGA 656U MISS STANDARD ET 17H
Pictured inside back cover
 SGC 14X STANDARD LAD 53A
AGA 53A MISS STANDARD ET 6R
 AGA 22B MISS BRIGADER 511E
 GENERATOR STANDARD 10A
 AD 75N LASS 31W
 STANDRD LAD 656 4ET
 AGA MISS 80S VOLTAGE ET 14X
 STANDARD K LAD 14X
 SGC BRIT STANDARD LASS 1U
 CTY BRIGADER 22B
 AGA MISS 42X STANMORE 94Z

Top % Of Breed For: YW 4%, SC 10%, FMI 15%
 Long, long, and very long, this 114L son, 55W, stands true and straight-backed - broad & strong to support his thickness and plentiful pounds of performance without compromising correctness! Long from hock to pin, big testicles and top 4% YW EPDs to prove it!
 His maternal side includes a fantastic mother (6R) and grandmother (511E) - check on our website.

74

AGA 26T JARROD 74W

C02932862 ALNK 74W APRIL 01 2009

BW:	85
205:	720
1/22:	1656
'11 EPD's	
CE:	0.0
BW:	2.9
WW:	45.4
YW:	79.7
MCE:	0.9
Milk:	22.5
TM:	45.2

CC 129D SUPERMAN 77J
CC 77J JARROD 26T
 CC 14N JOCELYN 33R
 AGA 20J STANMORE 21M
AGA 21M MISS STANMORE 120T
 AGA 207N MISS SILVER 5R
 FE 07Y SUPER 129D
 CC 42W JULIANA 66Z
 SILVER 23K NEON 14N
 CC HB JOCELYN 97J
 AGA 121G STANMORE 20J
 AGA 5C MISS ENERLAD 68K
 AGA 35J SILVER PRIDE 207N
 AGA 10K MISS STANDARD 62M

Top % Of Breed For: YW 30%, Milk 20%, TM 25%, STAY 10%, MPI 10%, MARB 10%
 An 85 lb son of 26T gives the dam (120T) an average BW of 77 lbs on her two bull calves - influenced by her easy-calving sire, 21M. Above average WN indexes 104.5, and yearling 104.0 bends that curve! Her Cow Weight EPD (-14.1) does not hinder her from producing big meaty calves by weaning time in fall. 26T completes the package to make 74W a heifer bull.

75

AGA 5T STANMORE DOM 75W

C02932863 ALNK 75W APRIL 01 2009

BW:	68
205:	620
1/22:	1589
'11 EPD's	
CE:	3.5
BW:	-1.4
WW:	22.5
YW:	36.7
MCE:	3.4
Milk:	24.0
TM:	35.3

AGA 21M STANMORE 26R
AGA 26R STANMORE 5T
 AGA 53L MISS RED DOMINO 122R
Pictured inside back cover
AGA 13G GENERAL 114L
AGA 114L MISS GENERAL 51T
 AGA 20J MISS STANMORE 253M
 AGA 20J STANMORE 21M
 AGA 91L MISS STANDARD 148N
 AGA 22B BRIGADER 53L
 AGA 656 MISS STANDARD 69M
 GEM GENERAL 13G
 AGA 656U MISS STANDARD ET 17H
 AGA 121G STANMORE 20J
 AGA 22B MISS BRIGADER 511E

Top % Of Breed For: CE 10%, BW 1%, Milk 10%, MCE 10%, STAY 1%, FMI 20%
 Did you read the top line?? This 5T son has not only the numbers but the length, strong top, and quarters wide enough to carry these accolades. His pedigree displays his light birthweight background. And with a 65% Lean Meat Yield, not only will the cow/calf producer love these progeny but the packers will as well!
Recommended for use on heifers

79

AGA 26T JARROD 79W

C02932873 ALNK 79W APRIL 02 2009

BW:	74
205:	672
1/22:	1648
'11 EPD's	
CE:	-0.2
BW:	2.3
WW:	37.8
YW:	67.4
MCE:	1.2
Milk:	16.8
TM:	35.7

CC 129D SUPERMAN 77J
CC 77J JARROD 26T
 CC 14N JOCELYN 33R
 AGA 41F HI STANDARD 73R
AGA 73R MISS STANDARD 98T
 AGA 114L MISS GENERAL 103N
 FE 07Y SUPER 129D
 CC 42W JULIANA 66Z
 SILVER 23K NEON 14N
 CC HB JOCELYN 97J
 BANNERLANE HI STANDARD 41F
 AGA 22B MISS BRIGADER ET 11L
 AGA 13G GENERAL 114L
 AGA 96H MISS STANDARD 182K

Top % Of Breed For: BW 25%, STAY 5%, MARB 10%
Recommended for use on heifers, 79W has the potential to produce strong, performance-minded calves yet with those desired light birthweights. The sire, 26T, passes along his share of his own sire's volume & performance to produce this grandson with character worthy of the SUPERMAN 77J! The dam, 98T, is feminine, yet delivers those light easy calves at birth with lots of vigour and power to grow. She's in this sale too, bred to 26T again.

ULRICH HEREFORD RANCH COMING 2'S

80

AGA 81S RIBSTONE 80W

C02932874 ALNK 80W APRIL 02 2009

BW:	106
205:	768
1/22:	1818
'11 EPD's	
CE:	-0.7
BW:	6.3
WW:	51.7
YW:	83.5
MCE:	1.8
Milk:	16.9
TM:	42.8

LCI 157K RIBSTONE 4P
AGA 4P RIBSTONE 81S
AGA 44K MISS OLD DOMINO 252M

Pictured inside back cover

CTY BRIGADER 22B
AGA 22B MISS BRIGADER ET 4L
AGA MISS 80S VOLTAGE ET 14X

Top % Of Breed For: WW 20%, YW 20%, MCE 30%, SC 25%, MPI 25%, FMI 1%, REA 25%

We'll let his numbers speak for himself: High MPI (+148.1) and an even better FMI number (+169.0)! Only 1% of the breed has an FMI number this good - the new Feedlot Merit Index which combines a number of traits into one # to determine potential profitability in feeder cattle. Here's a great pedigree with lots of performance - just like his sire, AGA 4P RIBSTONE 81S and Ribeye greatness by ultrasound measure and by eye.

K 64H RIBSTONE LAD 157K
LCI SUPERIOR GIRL 121H
AGA 1S OLD DOMINO 44K
AGA 102E MISS EXTRA 190K

BAR PIPE BRIGADIER 19Y
LADY 66J B DOM 509
LCI ET HIGH VOLTAGE 80S
MISS 51K BRITISHER AGA 61N

85

AGA 32T BRITISHER 85W

C02932878 ALNK 85W APRIL 04 2009

BW:	68
205:	711
1/22:	1682
'11 EPD's	
CE:	5.9
BW:	-1.9
WW:	25.9
YW:	45.4
MCE:	3.1
Milk:	20.5
TM:	33.5

DP BRITISHER AGA 46E
AGA 46E BRITISHER 32T
AGA 6N MISS STANDARD 50R

AGA 13G GENERAL 114L
AGA 114L MISS GENERAL 29T
AGA 5C MISS ENERLAD 68K

Top % Of Breed For: CE 1%, BW 1%, Milk 30%, MCE 10%, SC 15%, STAY 1%, MARB 15%

85W is another high marbling bull (129 index in our herd) by 32T, son of the great 46E who shines in Marbling, Calving Ease and Birthweight. The dam, 29T, is a direct result of 114L mated to the mother of 21M.

85W is destined to produce awesome cows and is **recommended for heifers** and for above average performance.

DOMINO STANDARD DP LAD 45
BRITISHER WETMORE LADY AGA 5A
AGA 656 STANDARD ET 6N
AGA 97J MISS RED EXTRA 9N

GEM GENERAL 13G
AGA 656U MISS STANDARD ET 17H
XTC 15Z ENERLAD STAN 5C
AGA 154F MISS BRITISHER 159H

86

AGA 31T RED SILVER 86W

C02933143 ALNK 86W APRIL 06 2009

BW:	93
205:	739
1/22:	1670
'11 EPD's	
CE:	-2.5
BW:	5.9
WW:	44.6
YW:	69.6
MCE:	-0.2
Milk:	18.9
TM:	41.2

AGA 44C SILVER 49R
AGA 49R RED SILVER 31T
AGA 656 MISS STANDARD ET 17N

Pictured inside back cover

AGA 13G GENERAL 114L
AGA 114L MISS GENERAL 77S
AGA 4K MISS STANMORE 221N

Top % Of Breed For: SC 25%

Here's a good gaining son of 31T who goes back to the SNS SILVER PRINCE 44C bull who did well both in our herd and throughout the world. His weaning and yearling gains are also complimented by his top-notch 114L mother (77S) and her mother, 221N (a high-performing cow with a perfect bag, working hard for Dan Keck in North Dakota. Her son, 105T, was purchased in our 2008 sale by Darren Priest & Greg Young, while we kept a semen share) We're sure 86W will be equally popular!

SNS SILVER PRINCE 44C
AGA 97J MISS RED EXTRA 237M
STANDRD LAD 656 4ET
AGA 335C MISS EXTRA 8G

GEM GENERAL 13G
AGA 656U MISS STANDARD ET 17H
AGA 4016D STANMORE 4K
AGA 44C MISS SILVER 85G

87

AGA 26R WHAM HAMMER 87W

C02933144 ALNK 87W APRIL 06 2009

BW:	86
205:	671
1/22:	1756
'11 EPD's	
CE:	-1.1
BW:	2.8
WW:	29.1
YW:	50.8
MCE:	0.7
Milk:	9.2
TM:	23.8

DIAMOND-T 25J LAD 5L
LFF 5L JACK HAMMER 26R
LFF 3B HI LITE EXTRA LASS 11E

Pictured on front cover

AGA 1S OLD DOMINO 44K
AGA 44K MISS OLD DOMINO 252M
AGA 102E MISS EXTRA 190K

A tremendous individual, stout and balanced with beautiful quarters, wide top and heifer quality (BW 86lb). His sire, 26R is a voluminous moderate-sized bull from Fowlie's, who unfortunately did not report weights. The EPDs will surely catch up with the likes of 252M on the maternal side along with WETMORE DOMINO 1S (both great cow producers)! These genetics have produced sons like 81S who's sired some of the top bulls in this sale and 47U purchased by the very particular White Lake Colony. Wham Hammer is the outcross bull sure to shake the Hereford Industry. **Retaining Interest**

DIAMOND-T 127C LAD 25J
DIAMOND-T DOM BRIT 5E
SJSJL HI LITE SUPER LAD 3B
LFF 16Z EXTRA LASS 3C

HU WETMORE DOMINO 1S
AGA 656U MISS STANDARD ET 17H
FE 27A EXTRA 102E
AGA 189C MISS DOMINO 22F

103

AGA 5T STANMORE DOM 103W

C02933725 ALNK 103W APRIL 13 2009

BW:	84
205:	706
1/22:	1732
'11 EPD's	
CE:	0.3
BW:	2.9
WW:	36.1
YW:	69.5
MCE:	1.3
Milk:	22.6
TM:	40.7

AGA 21M STANMORE 26R
AGA 26R STANMORE 5T
AGA 53L MISS RED DOMINO 122R

Pictured inside back cover

AGA 13G GENERAL 114L
AGA 114L MISS GENERAL 81T
AGA 141J MISS STANDARD 223L

Top % Of Breed For: BW 30%, Milk 20%, STAY 15%, MPI 30%, FMI 10%, REA 25%

Born 84lbs - here's yet another heifer bull by a 21M grandson - expect easy calving and light birth weights from 103W. He's a clean-fronted bull, long, very docile, very tame, with pigment on testicles and eye, which freckles onto his face. He performed above average on both WN & YR and had the 2nd highest Rib-eye in the herd with a 65% Yield.

AGA 20J STANMORE 21M
AGA 91L MISS STANDARD 148N
AGA 22B BRIGADER 53L
AGA 656 MISS STANDARD 69M

GEM GENERAL 13G
AGA 656U MISS STANDARD ET 17H
AGA 191G STANDARD 141J
AGA 23D MISS DOMINO 171H

105

AGA 32T BRITISHER 105W

C02933727 ALNK 105W APRIL 14 2009

BW:	82
205:	754
1/22:	1705
'11 EPD's	
CE:	3.7
BW:	1.0
WW:	36.1
YW:	61.4
MCE:	0.4
Milk:	20.2
TM:	38.3

DP BRITISHER AGA 46E
AGA 46E BRITISHER 32T
AGA 6N MISS STANDARD 50R

Pictured inside back cover

AGA 13G GENERAL 114L
AGA 114L MISS GENERAL 94T
AGA 53A MISS STANDARD ET 152M

Top % Of Breed For: CE 10%, BW 10%, Milk 30%, SC 10%, STAY 20%, MARB 30%

This chap sports a long, thick yellow haircoat over the #1 RibFat honours! A son of 32T, he inherited the great Calving Ease and light, light Birth Weight (born 82 lbs) and then 114L on the maternal side for length, thickness & performance! 105W's dam is a good-footed cow with rugged bone, and her 2nd calf won top WN Index - this cow can produce. So 105W's prospective daughters should make outstanding cows, complete with hair, conformation, rich milk and nice tight udders! (**heifer bull**)

DOMINO STANDARD DP LAD 45
BRITISHER WETMORE LADY AGA 5A
AGA 656 STANDARD ET 6N
AGA 97J MISS RED EXTRA 9N

GEM GENERAL 13G
AGA 656U MISS STANDARD ET 17H
SGC 14X STANDARD LAD 53A
AGA 22B MISS BRIGADER 511E

111

AGA 26R HAMMER 111W

C02933733 ALNK 111W APRIL 16 2009

BW:	107
205:	719
1/22:	1852
'11 EPD's	
CE:	-6.1
BW:	7.9
WW:	40.0
YW:	67.4
MCE:	-1.4
Milk:	10.5
TM:	30.5

DIAMOND-T 25J LAD 5L
LFF 5L JACK HAMMER 26R
LFF 3B HI LITE EXTRA LASS 11E

Pictured inside back cover

GEM GENERAL 13G
AGA 13G MISS GENERAL 249N
AGA 656U MISS STANDARD ET 17H

This 'loose-skin' son of 26R is constructed with lots of stretch and lots of body which equals pounds on the scale! Good feet and rugged bone lead up to a pretty head and neck.

His mother, 249N, is a full sister to 114L and is the dam of 36U - the 3rd highest seller in our sale last year to Johnson Ranch of Brooks, AB.

DIAMOND-T 127C LAD 25J
DIAMOND-T DOM BRIT 5E
SJSJL HI LITE SUPER LAD 3B
LFF 16Z EXTRA LASS 3C

GENERATOR STANDARD 10A
AD 75N LASS 31W
STANDRD LAD 656 4ET
AGA MISS 80S VOLTAGE ET 14X

115

AGA 32T BRITISHER 115W

C02933736 ALNK 115W APRIL 21 2009

BW:	82
205:	666
1/22:	1638
'11 EPD's	
CE:	6.0
BW:	0.2
WW:	32.4
YW:	55.2
MCE:	1.5
Milk:	20.2
TM:	36.4

DP BRITISHER AGA 46E
AGA 46E BRITISHER 32T
AGA 6N MISS STANDARD 50R

Pictured on front cover

AGA 20J STANMORE 21M
AGA 21M MISS STANMORE 133T
AGA 53A MISS STANDARD ET 6R

Top % Of Breed For: CE 1%, BW 4%, Milk 30%, STAY 10%, FMI 20%, MARB 1%

Here's another heifer bull, born at 82 lbs (CE EPD +6.0) with carcass qualities too - Marbling Index of 191 (#1 in our herd) and MARB EPD of +0.41. His sire's (32T) "W" progeny ranked 1st, 2nd & 5th for Marbling - carcass sure to be tender and tasty on a plate. All things considered, his progeny should be smooth & trim, the females beautiful and the males liked by the packers.

DOMINO STANDARD DP LAD 45
BRITISHER WETMORE LADY AGA 5A
AGA 656 STANDARD ET 6N
AGA 97J MISS RED EXTRA 9N

AGA 121G STANMORE 20J
AGA 5C MISS ENERLAD 68K
SGC 14X STANDARD LAD 53A
AGA 22B MISS BRIGADER 511E

ULRICH HEREFORD RANCH COMING 2'S

117

GA 5T STANMORE DOM 117W

C02933738 ALNK 117W APRIL 22 2009

BW:	82
205:	608
1/22:	1522
'11 EPD's	
CE:	1.4
BW:	2.8
WW:	29.4
YW:	57.4
MCE:	1.8
Milk:	21.5
TM:	36.2

AGA 21M STANMORE 26R
AGA 26R STANMORE 5T
AGA 53L MISS RED DOMINO 122R

BANNERLANE HI STANDARD 41F
AGA 41F MISS HI STANDARD 41T
AGA 20J MISS STANMORE 202M

AGA 20J STANMORE 21M
AGA 91L MISS STANDARD 148N
AGA 22B BRIGADER 53L
AGA 656 MISS STANDARD 69M

MVF 656 65U STD DOMINO LAD 87D
BANNERLANE 56U DOM LASS 15Z
AGA 121G STANMORE 20J
AGA 40Y MISS BRITISHER 88F

Top % Of Breed For: Milk 25%, MCE 30%, STAY 4%, FMI 10%
Wanting to sleep through the night at calving time? 117W is sired by 5T, who has had 37 progeny and 36 of those were all born unassisted. 5T is a grandson of 21M, the Calving Ease Specialist, who also holds many trait-leading EPDs. A wide loin, and a body so smooth and long - plus his 82 lb BW - makes 117W **easily recommended for heifers!**

129

AGA 114L GENERAL 129W

C02935350 ALNK 129W MAY 08 2009

BW:	77
205:	539
1/22:	1573
'11 EPD's	
CE:	-2.3
BW:	3.0
WW:	39.7
YW:	76.4
MCE:	2.1
Milk:	25.2
TM:	45.0

GEM GENERAL 13G
AGA 13G GENERAL 114L
AGA 656U MISS STANDARD ET 17H

Pictured inside back cover
AGA 34Z STANDARD ET 10K
AGA 10K MISS STANDARD 27M
AGA 277D MISS STANDARD 21G

GENERATOR STANDARD 10A
AD 75N LASS 31W
STANDRD LAD 656 4ET
AGA MISS 80S VOLTAGE ET 14X

PDHR 3X HI STANDARD 34Z
AGA 22B MISS BRIGADER 511E
BAR-OM 656 ST COMMAND LAD 277D
AGA 67Z MISS CENTENNIAL ET 45E

Top % Of Breed For: Milk 10%, TM 25%, MCE 25%, SC 4%, STAY 20%, MPI 15%, FMI 30%
This 114L son weighed in at 77 lbs on the birth scale, but 2 short years later turned into a stout, red, woolly coated bull that stands firm & strong with a strong loin and wide quarter pushing down into pretty socks through good bone!
The mother, 27M, is a long correct cow with low birthweight genetics and lots of growth after the calf is born!

119

AGA 114L GENERAL 119W

C02934696 ALNK 119W APRIL 23 2009

BW:	103
205:	698
1/22:	1823
'11 EPD's	
CE:	-3.1
BW:	5.0
WW:	45.8
YW:	80.0
MCE:	0.7
Milk:	24.6
TM:	47.5

GEM GENERAL 13G
AGA 13G GENERAL 114L
AGA 656U MISS STANDARD ET 17H

Pictured inside back cover
AGA 121G STANMORE 20J
AGA 20J MISS STANMORE 253M
AGA 22B MISS BRIGADER 511E

GENERATOR STANDARD 10A
AD 75N LASS 31W
STANDRD LAD 656 4ET
AGA MISS 80S VOLTAGE ET 14X

AGA 4016D STANMORE 121G
AGA 40E MISS STANMORE 80G
CTY BRIGADER 22B
AGA MISS 42X STANMORE 94Z

Top % Of Breed For: YW 30%, Milk 10%, and TM 20%, SC 4% MPI 20%, FMI 10%, MARB 15%
This mossy haired gentleman carries a long wide top, good quarters and replicates the muscling pattern of his famous father, 114L. He takes 3rd place Marbling honours, and his mother, 253M is deep and thick, with volume galore, lots of milk and small teats. What could go wrong with a combination like this?

901

AGA 705 EASYGOING 901W

C02949706 ALNK 901W AUGUST 27 2009

BW:	91
205:	562
1/22:	1496
'11 EPD's	
CE:	3.4
BW:	1.8
WW:	33.6
YW:	46.7
MCE:	0.8
Milk:	18.4
TM:	35.2

AGA 10S STANDARD 137Y
CTY EASY 705T
COURTNEY LASS J921

SJSL HI 20 STAND LAD 10S
GU MISS 46E BRITISHER 10K
SNS SUPER SILVER 35D
COURTNEY LASS E522

STANDRD LAD 656 4ET
AGA 656 MISS STANDARD 15M
AGA 335C MISS EXTRA 8G

HI STANDARD LAD 20P
BELL L 60H DOMINO LASS 82K
CTY EXTRA 335C
AGA 67Z MISS CENTENNIAL 81D

Top % Of Breed For: CE 10%, BW 15%, STAY 15%
Not only because he's sired by 705, who descends from the great cow maker 137Y (known for his calving ease) but also because his dam 15M, brags up her own 5 bull calves averaging 81 lbs and heifer calves averaging 68 lbs at birth. **we recommend 901W for use on heifers.** 15M's calves are also born with lots of life & vigour, grow quickly and perform! She gets top marks for conformation and a beautiful tight udder. The 901W package comes with a bonus extra length and extra bone.

122

AGA 32T BRITISHER 122W

C02934699 ALNK 122W APRIL 24 2009

BW:	74
205:	609
1/22:	1519
'11 EPD's	
CE:	6.2
BW:	-0.3
WW:	23.8
YW:	47.0
MCE:	1.9
Milk:	16.0
TM:	27.9

DP BRITISHER AGA 46E
AGA 46E BRITISHER 32T
AGA 6N MISS STANDARD 50R

AGA 22B BRIGADER 53L
AGA 53L MISS RED DOMINO 58T
AGA 12H MISS STANMORE 244M

DOMINO STANDARD DP LAD 45
BRITISHER WETMORE LADY AGA 5A
AGA 656 STANDARD ET 6N
AGA 97J MISS RED EXTRA 9N

CTY BRIGADER 22B
AGA 189C MISS DOMINO 4E
AGA 4016D STANMORE 12H
AGA 191G MISS STANDARD 49J

Top % Of Breed For: CE 1%, BW 2% MCE 25%, STAY 10%
Lots of thick hair, pigmentation and red - great CE EPD and BW EPDs - 74 lb BW - **what a heifer bull!**
His sire, 32T, adds the easy calving and extra vigour at birth while the beautiful young mother, 58T, with exceptional feet and udder, contributes depth, thickness and easy fleshing!

908

AGA 705 EASYGOING 908W

C02949712 ALNK 908W SEPTEMBER 05 2009

BW:	79
205:	578
1/22:	1288
'11 EPD's	
CE:	2.3
BW:	2.2
WW:	33.7
YW:	52.3
MCE:	1.6
Milk:	23.1
TM:	40.0

AGA 10S STANDARD 137Y
CTY EASY 705T
COURTNEY LASS J921

SJSL HI 20 STAND LAD 10S
GU MISS 46E BRITISHER 10K
SNS SUPER SILVER 35D
COURTNEY LASS E522

Pictured inside back cover
AGA 13G GENERAL 114L
AGA 114L MISS GENERAL 95T
AGA 21M MISS STANMORE 151P

GEM GENERAL 13G
AGA 656U MISS STANDARD ET 17H
AGA 20J STANMORE 21M
AGA 97J MISS RED EXTRA 145M

Top % Of Breed For: CE 20%, BW 20%, Milk 15%, MCE 30%, STAY 10%, MPI 20%
There's no argument from the EPD department that 908W qualifies as a **heifer bull!** (79 lbs at birth), Goggle eyes, the red neck, volume, thickness, performance - all come with this pedigree filled with light birth-weights.
One can anticipate beautiful females with longevity, excellent rich milk, great udders and teat placement, from 908W.

123

AGA 32T BRITISHER 123W

C02934700 ALNK 123W APRIL 25 2009

BW:	74
205:	563
1/22:	1558
'11 EPD's	
CE:	4.9
BW:	0.3
WW:	29.7
YW:	44.7
MCE:	1.8
Milk:	14.7
TM:	29.5

DP BRITISHER AGA 46E
AGA 46E BRITISHER 32T
AGA 6N MISS STANDARD 50R

AGA 41F HI STANDARD 73R
AGA 73R MISS STANDARD 117T
AGA 17M MISS SKY LAD 169P

DOMINO STANDARD DP LAD 45
BRITISHER WETMORE LADY AGA 5A
AGA 656 STANDARD ET 6N
AGA 97J MISS RED EXTRA 9N

BANNERLANE HI STANDARD 41F
AGA 22B MISS BRIGADER ET 11L
SNS 75K SKY PRINCE 17M
AGA 101J MISS STANDARD 240L

Top % Of Breed For: CE 3%, BW 4%, MCE 25%, STAY 10%, MARB 1%
The long, fluffy, curly haircoat could not conceal the great carcass traits from the ultrasound wand! Marbling, 2nd highest in group (Indx 156) - REA Indx 109 - RibFat Indx 146 - RumpFat Indx 126 - Not only great carcass, this 123W claims **heifer bull** status with a 74 lb BW.
His dam, 117T is also offered for sale here, due only to a limited land base. She's a good cow, very nice udder, small teats, well marked, long & correct.

909

AGA 705 EASYGOING 909W

C02949713 ALNK 909W SEPTEMBER 08 2009

BW:	92
205:	533
1/22:	1328
'11 EPD's	
CE:	1.7
BW:	3.9
WW:	38.0
YW:	56.4
MCE:	2.2
Milk:	17.8
TM:	36.8

AGA 10S STANDARD 137Y
CTY EASY 705T
COURTNEY LASS J921

SJSL HI 20 STAND LAD 10S
GU MISS 46E BRITISHER 10K
SNS SUPER SILVER 35D
COURTNEY LASS E522

AGA 85J STANDARD 118L
AGA 118L MISS STANDARD 11R
AGA 656U MISS STANDARD 135J

AGA 191G STANDARD 85J
AGA 40Y MISS BRITISHER 168F
STANDRD LAD 656 4ET
AGA 852 MISS STANMORE 22C

Top % Of Breed For: CE 30%, MCE 20%, STAY 10%, MPI 30%
909W should produce outstanding females. His grandsire, 137Y, brings proven longevity and excellent udders in his females, along with many other wonderful traits.
11R, 909W's mother, is an all around great cow: volume, good tight udder, and superb feet.
909W is just the kind of bull to help bring the Hereford influence back to the cattle industry.

ULRICH HEREFORD RANCH LONG YEARLINGS

916

AGA 705 EASYGOING 916W

C02949718 ALNK 916W OCTOBER 01 2009

BW:	96
205:	597
1/22:	1276
'11 EPD's	
CE:	1.7
BW:	4.3
WW:	39.9
YW:	57.4
MCE:	-0.8
Milk:	20.8
TM:	40.8

AGA 10S STANDARD 137Y
CTY EASY 705T
COURTNEY LASS J921

SJSL HI 20 STAND LAD 10S
GU MISS 46E BRITISHER 10K
SNS SUPER SILVER 35D
COURTNEY LASS E522

BANNERLANE HI STANDARD 41F
AGA 41F MISS HI STANDARD 53S
AGA 335C MISS EXTRA 8G

MVF 656 65U STD DOMINO LAD 87D
BANNERLANE 56U DOM LASS 15Z
CTY EXTRA 335C
AGA 67Z MISS CENTENNIAL 81D

Top % Of Breed For: CE 30%, Milk 30%, STAY 25%, MPI 20%, MARB 25%

Once again, here's some excellent performance for you! Our fall program does not pamper with green grass or creep feeders, which means that mom has to do it all! 53S is up to the task with rich, very rich milk from an udder not much bigger than a fist!
Any rancher to possess 916W won't regret it!

920

AGA 705 EASYGOING 920W

C02949721 ALNK 920W NOVEMBER 06 2009

BW:	92
205:	609
1/22:	1320
'11 EPD's	
CE:	2.1
BW:	3.5
WW:	36.8
YW:	53.0
MCE:	0.9
Milk:	21.3
TM:	39.7

AGA 10S STANDARD 137Y
CTY EASY 705T
COURTNEY LASS J921

SJSL HI 20 STAND LAD 10S
GU MISS 46E BRITISHER 10K
SNS SUPER SILVER 35D
COURTNEY LASS E522

AGA 4016D STANMORE 121G
AGA 121G MISS STANMORE 217J
AGA 335C MISS EXTRA 132G

CTY K STANMORE 4016D
AGA 99B CENTENNIAL 51D
CTY EXTRA 335C
AGA 303Y MISS STANDARD 160C

Top % Of Breed For: CE 25%, Milk 25%, STAY 25%, MPI 15%

920W achieved great performance through weaning and yearling. He is red, with length & depth from both parents, and sports a long thick haircoat which stems from many generations in our cow families. 920W, through his sire 705, is bound to produce some awesome females, adding the strong influence of 137Y who improved many traits in the Hereford breed.

ULRICH HEREFORD RANCH BRED HEIFERS

ULRICH SERVICE SIRE

SERVICE **AGA 46E BRITISHER ET 2U**

SIRE ALNK 2U C02925141 FEBRUARY 15 2008 BW: 104 LBS.

2011 EPD'S: CE: +6.2 BW: +1.2 WW: +31.2 YW: +57.0 MCE: -0.4 TM: +29.9

SIRE: DP BRITISHER AGA 46E - C01466319

DAM: AGA 22B MISS BRIGADER 511E - C02864063

MGS: CTY BRIGADER 22B - C02623018

SERVICE **AGA 114L GENERAL WILEY 24W**

SIRE {DLF IEF HYF} ALNK 24W C02931573 MARCH 11 2009 BW: 70 LBS.

2011 EPD'S: CE: +1.2 BW: +0.7 WW: +42.3 YW: +66.3 MCE: +3.2 TM: +43.5

SIRE: AGA 13G GENERAL 114L - C02795506

DAM: AGA 118L MISS STANDARD 2R {DLF IEF HYF} - C02877788

MGS: AGA 85J STSANDARD 118L - C02795548

SERVICE **AGA 53A STANDARD ET 4R**

SIRE ALNK 4R C02865134 FEBRUARY 9 2005 BW: 75 LBS.

2011 EPD'S: CE: +1.2 BW: +5.3 WW: +47.1 YW: +78.2 MCE: -3.4 TM: +35.3

SIRE: SGC 14X STANDARD LAD 53A - C02481521

DAM: AGA 22B MISS BRIGADER 511E - C02654874

MGS: CTY BRIGADER 22B - C02623018

SERVICE **AGA 35J SILVER PRIDE 207N**

SIRE ALNK 207N C02827862 MARCH 8 2003 BW: 107 LBS.

2011 EPD'S: CE: -1.4 BW: +6.0 WW: +39.0 YW: +68.8 MCE: +0.4 TM: +36.5

SIRE: SFL 38E SILVER PRIDE 35J - C02738964

DAM: AGA 33G MISS STANDARD 83J - C02738261

MGS: AGA 656U STANDARD 33G - C02684127

SERVICE **AGA 72R LAD 802U**

SIRE ALNK 802U C02933927 AUGUST 6 2008 BW: 74 LBS.

2011 EPD'S: CE: +2.2 BW: +0.5 WW: +30.8 YW: +52.5 MCE: +2.8 TM: +27.6

SIRE: KGA 33H LAD 72R - C02870234

DAM: AGA 656U MISS STANDARD 135J - C02738248

MGS: STANDRD LAD 656 4ET - C02322540

SERVICE **AGA 20J STANMORE 21M**

SIRE ALNK 21M C02805799 FEBRUARY 12 2002 BW: 85 LBS.

2011 EPD'S: CE: +4.2 BW: -0.4 WW: 48.2 YW: 78.9 MCE: +5.7 TM: +61.4

SIRE: AGA 121G STANMORE 20J - C02738219

DAM: AGA 5C MISS ENERLAD 95K - C02757189

MGS: XTC 15Z ENERLAD STAN 5C - C02548395

5

AGA 20S MISS OAK 5W

C02930180 ALNK 5W FEBRUARY 27 2009

BW:	98
205:	616
'11 EPD's	
CE:	-3.8
BW:	8.4
WW:	45.8
YW:	90.4
MCE:	-0.2
Milk:	18.5

K 64H RIBSTONE LAD 157K
S BIG OAK 20S ET
S 59K LASS 36M

STANDARD 16E RIBSTONE 64H
K 61Z SUPER LADY 41G
LPG 82B STANDARD LAD 59K
LPG DOMINO 41S LASS 34F

AGA 656U STANDARD ET 101J
AGA 101J MISS STANDARD 60P
AGA 85A MISS STD BRIT 144H

STANDRD LAD 656 4ET
AGA MISS 80S VOLTAGE ET 14X
LLL FE STD BRIT 85A
AGA 852 MISS STANMORE ET 12C

Exposed: May 24 - July 28 - AGA 46E Britisher ET 2U

Due: late March

7

AGA 11T MISS GENERAL T 7W

C02930182 ALNK 7W FEBRUARY 28 2009

BW:	86
205:	624
'11 EPD's	
CE:	-1.9
BW:	5.3
WW:	39.6
YW:	85.9
MCE:	0.0
Milk:	17.1

AGA 13G GENERAL 114L
AGA 114L GENERAL 111T
AGA 22B MISS BRIGADER 23L

GEM GENERAL 13G
AGA 656U MISS STANDARD ET 17H
CTY BRIGADER 22B
AGA 191G MISS STANDARD 49J

AGA 35J SILVER PRIDE 207N
AGA 207N MISS SILVER 5R
AGA 10K MISS STANDARD 62M

SFL 38E SILVER PRIDE 35J
AGA 33G MISS STANDARD 83J
AGA 34Z STANDARD ET 10K
AGA 121G MISS STANMORE 111J

A.I.'ed: May 23 - AGA 21M Stanmore 95S (Ref Sire E)

Exposed: June 11 - July 28 - AGA 26R Wham Hammer 87W

Due: end of March

9

AGA 70N MISS BRIT DOM 9W

C02930184 ALNK 9W FEBRUARY 28 2009

BW:	58
205:	555
'11 EPD's	
CE:	1.3
BW:	2.0
WW:	25.0
YW:	52.9
MCE:	0.2
Milk:	6.1

FE 135D BRIT DOM 79H
AGA 79H BRIT DOM ET 70N
AGA 656U MISS STANDARD ET 17H

FE 8S BRITISHER DOMINO 135D
FE 412 DANDY 60Y
STANDRD LAD 656 4ET
AGA MISS 80S VOLTAGE ET 14X

MR MO LE 47F
AGA 47F MISS DOMINO 15K
AGA 656U MISS STANDARD 29H

DOUBLE MO LE 12B
D STANDARD LASS 88B
STANDRD LAD 656 4ET
AGA MISS ELDORADO 77C

Exposed: May 24 - July 28 - CTY Easy 705T (Ref Sire J)

Due: end of March

16

AGA 26T MISS JARROD 16W

C02930935 ALNK 16W MARCH 07 2009

BW:	84
205:	795
'11 EPD's	
CE:	-1.9
BW:	4.8
WW:	53.6
YW:	89.6
MCE:	0.7
Milk:	19.3

CC 129D SUPERMAN 77J
CC 77J JARROD 26T
CC 14N JOCELYN 33R

FE 07Y SUPER 129D
CC 42W JULIANA 66Z
SILVER 23K NEON 14N
CC HB JOCELYN 97J

Pictured inside back cover
AGA 656U STANDARD ET 101J
AGA 101J MISS STANDARD 14R
AGA 288D MISS STANDARD 24H

STANDRD LAD 656 4ET
AGA MISS 80S VOLTAGE ET 14X
FE 34Z STANDARD 288D
AGA 22B MISS BRIGADER 511E

A.I.'ed: June 10 - AGA 72R Lad 802U

Exposed: June 29 - July 28 - AGA 114L General Wiley 24W

Due: mid April



ULRICH HEREFORD RANCH BRED HEIFERS



20

AGA 95S MISS STANMORE II 20W

C02937181 ALNK 20W MARCH 09 2009

BW:	89
205:	645
'11 EPD's	
CE:	-0.5
BW:	4.2
WW:	40.7
YW:	68.0
MCE:	0.9
Milk:	23.8

AGA 20J STANMORE 21M
AGA 21M STANMORE 95S
 AGA 656 MISS STANDARD 69M

AGA 121G STANMORE 20J
 AGA 5C MISS ENERLAD 68K
 STANDRD LAD 656 4ET
 AGA 69G MISS EXTRA 10J

STANDRD LAD 656 4ET
 AGA MISS 80S VOLTAGE ET 14X
 FE 34Z STANDARD 288D
 AGA 22B MISS BRIGADER 511E

AGA 656U STANDARD ET 101J
AGA 101J MISS STANDARD 124L
 AGA 288D MISS STANDARD 24H

Exposed: May 24 - July 28 - AGA 26R Wham Hammer 87W
Due: mid March

61

AGA 26T MISS JARROD 61W

C02932593 ALNK 61W MARCH 27 2009

BW:	72
205:	706
'11 EPD's	
CE:	0.7
BW:	2.9
WW:	47.5
YW:	88.0
MCE:	1.7
Milk:	24.6

CC 129D SUPERMAN 77J
CC 77J JARROD 26T
 CC 14N JOCELYN 33R

FE 07Y SUPER 129D
 CC 42W JULIANA 66Z
 SILVER 23K NEON 14N
 CC HB JOCELYN 97J

AGA 121G STANMORE 20J
 AGA 5C MISS ENERLAD 68K
 AGA 22B BRIGADER 97J
 AGA 114L MISS GENERAL 103N

AGA 20J STANMORE 21M
AGA 21M MISS STANMORE 128T
 AGA 97J MISS RED EXTRA 35R

Exposed: May 24 - July 28 - AGA 46E Britisher ET 2U
Due: early March

34

AGA 114L MISS GENERAL 34W

C02932421 ALNK 34W MARCH 17 2009

BW:	77
205:	600
'11 EPD's	
CE:	-4.6
BW:	4.0
WW:	34.4
YW:	65.8
MCE:	1.9
Milk:	18.4

GEM GENERAL 13G
AGA 13G GENERAL 114L
 AGA 656U MISS STANDARD ET 17H

GENERATOR STANDARD 10A
 AD 75N LASS 31W
 STANDRD LAD 656 4ET
 AGA MISS 80S VOLTAGE ET 14X

FE 59J DOM STD 127U
 LLL 81 STD BRITISHER LASS 10U
 CTY BRIGADER 22B
 AGA 852 MISS STANMORE ET 5C

LLL FE STD BRIT 85A
AGA 85A MISS BRITISHER 99J
 AGA 22B BRIGADER 83F

Exposed: May 24 - July 28 - AGA 26R Wham Hammer 87W
Due: early April

95

AGA 5T MISS STANMORE DOM 95W

C02933435 ALNK 95W APRIL 10 2009

BW:	85
205:	632
'11 EPD's	
CE:	0.3
BW:	4.7
WW:	41.3
YW:	76.5
MCE:	2.5
Milk:	20.8

AGA 21M STANMORE 26R
AGA 26R STANMORE 5T
 AGA 53L MISS RED DOMINO 122R

AGA 20J STANMORE 21M
 AGA 91L MISS STANDARD 148N
 AGA 22B BRIGADER 53L
 AGA 656 MISS STANDARD 69M

K 64H RIBSTONE LAD 157K
 LCI SUPERIOR GIRL 121H
 AGA 277D STANDARD 191G
 AGA MISS 80S VOLTAGE ET 14X

LCI 157K RIBSTONE 4P
AGA 4P MISS RIBSTONE 60T
 AGA 191G MISS STANDARD ET 147L

Exposed: May 24 - July 28 - AGA 46E Britisher ET 2U
Due: early April

42

AGA 81S MISS RIBSTONE 42W

C02932427 ALNK 42W MARCH 20 2009

BW:	78
205:	765
'11 EPD's	
CE:	0.0
BW:	3.7
WW:	42.9
YW:	57.9
MCE:	2.9
Milk:	15.0

LCI 157K RIBSTONE 4P
AGA 4P RIBSTONE 81S
 AGA 44K MISS OLD DOMINO 252M

K 64H RIBSTONE LAD 157K
 LCI SUPERIOR GIRL 121H
 AGA 1S OLD DOMINO 44K
 AGA 102E MISS EXTRA 190K

STANDRD LAD 656 4ET
 AGA MISS 80S VOLTAGE ET 14X
 DMF 81N STANDARD LAD 303Y
 AGA 40Y MISS BRITISHER 30A

AGA 656U STANDARD ET 101J
AGA 101J MISS STANDARD 97R
 AGA 303Y MISS STANDARD 141E

Exposed: May 24 - July 28 - AGA 114L General Wiley 24W
Due: late March

112

AGA 26R MISS HAMMER 112W

C02933734 ALNK 112W APRIL 18 2009

BW:	95
205:	772
'11 EPD's	
CE:	-4.1
BW:	6.3
WW:	45.7
YW:	68.0
MCE:	0.1
Milk:	13.5

DIAMOND-T 25J LAD 5L
LFF 5L JACK HAMMER 26R
 LFF 3B HI LITE EXTRA LASS 11E

DIAMOND-T 127C LAD 25J
 DIAMOND-T DOM BRIT 5E
 SJSJ HI LITE SUPER LAD 3B
 LFF 16Z EXTRA LASS 3C

PDHR 3X HI STANDARD 34Z
 AGA 22B MISS BRIGADER 511E
 CTY BRIGADER 22B
 AGA 852 MISS STANMORE ET 5C

AGA 34Z STANDARD ET 10K
AGA 10K MISS STANDARD 150M
 AGA 22B BRIGADER 83F

Exposed: May 24 - July 28 - AGA 114L General Wiley 24W
Due: end of March

47

AGA 81S MISS RIBSTONE 47W

C02932489 ALNK 47W MARCH 24 2009

BW:	78
205:	627
'11 EPD's	
CE:	1.0
BW:	2.4
WW:	36.7
YW:	59.1
MCE:	1.9
Milk:	14.4

LCI 157K RIBSTONE 4P
AGA 4P RIBSTONE 81S
 AGA 44K MISS OLD DOMINO 252M

K 64H RIBSTONE LAD 157K
 LCI SUPERIOR GIRL 121H
 AGA 1S OLD DOMINO 44K
 AGA 102E MISS EXTRA 190K

STANDARD 85A DOMINO 82F
 AC MISS 359 ROBINSON 63F
 STANDRD LAD 656 4ET
 AGA 335C MISS EXTRA 8G

C 82F MICKS KAPTAIN 82K
AGA 82K MISS KAPTAIN 16R
 AGA 656 MISS STANDARD 15M

Exposed: May 24 - July 28 - CTY Easy 705T (Ref Sire J)
Due: early April

810

AGA 70N MISS BRIT DOM 810U

FALL HEIFER C02923099 ALNK 810U SEPTEMBER 08 2008

BW:	94
205:	546
'11 EPD's	
CE:	-1.1
BW:	5.1
WW:	45.3
YW:	77.5
MCE:	1.1
Milk:	14.0

FE 135D BRIT DOM 79H
AGA 79H BRIT DOM ET 70N
 AGA 656U MISS STANDARD ET 17H

FE 8S BRITISHER DOMINO 135D
 FE 412 DANDY 60Y
 STANDRD LAD 656 4ET
 AGA MISS 80S VOLTAGE ET 14X

CTY BRIGADER 22B
 AGA 335C MISS EXTRA 8G
 AGA 191G STANDARD 85J
 AGA 9C MISS STANMORE 39H

AGA 22B BRIGADER 97J
AGA 97J MISS RED EXTRA 132N
 AGA 85J MISS STANDARD 225L

A.I.'ed: May 21 - AGA 26R Wham Hammer 87W
Exposed: June 12 - July 28 - AGA 114L General Wiley 24W
Due: mid March

59

AGA 5T MISS STANMORE DOM 59W

C02932592 ALNK 59W MARCH 27 2009

BW:	74
205:	634
'11 EPD's	
CE:	4.2
BW:	0.4
WW:	26.7
YW:	52.9
MCE:	2.5
Milk:	17.7

AGA 21M STANMORE 26R
AGA 26R STANMORE 5T
 AGA 53L MISS RED DOMINO 122R

AGA 20J STANMORE 21M
 AGA 91L MISS STANDARD 148N
 AGA 22B BRIGADER 53L
 AGA 656 MISS STANDARD 69M

DP BRITISHER AGA 46E
 AGA 167L MISS SILVER 125N
 AGA 85J STANDARD 118L
 AGA 79H MISS BRIT DOM ET 118N

AGA 46E BRITISHER 47R
AGA 47R MISS BRITISHER 50T
 AGA 118L MISS STANDARD 27R

Exposed: May 24 - July 28 - AGA 46E Britisher ET 2U
Due: early April

818

AGA 70N MISS BRIT DOM 818U

FALL HEIFER C02941003 ALNK 818U OCTOBER 10 2008

BW:	85
205:	405
'11 EPD's	
CE:	-2.2
BW:	3.6
WW:	33.0
YW:	54.6
MCE:	1.9
Milk:	7.2

FE 135D BRIT DOM 79H
AGA 79H BRIT DOM ET 70N
 AGA 656U MISS STANDARD ET 17H

FE 8S BRITISHER DOMINO 135D
 FE 412 DANDY 60Y
 STANDRD LAD 656 4ET
 AGA MISS 80S VOLTAGE ET 14X

SGC 50Y EXTRA LAD 27A
 FE 6T RUSTANDARD 10Y
 AGA 852 STANMORE ET 9C
 AGA 303Y MISS STANDARD 113B

FE 27A EXTRA 102E
AGA 102E MISS EXTRA 926J
 AGA 9C MISS STANMORE 43F

A.I.'ed: June 3 - AGA 20J Stanmore 21M
Exposed: June 26 - July 28 - CC 77J Jarrod 26T (Ref Sire H)
Due: mid April



93

ULRICH HEREFORD RANCH YOUNG COWS

AGA 70N MISS BRIT DOM 93U

C02917520 ALNK 93U APRIL 10 2008

BW:	69
205:	541
'11 EPD's	
CE:	1.5
BW:	1.4
WW:	34.1
YW:	55.5
MCE:	2.9
Milk:	12.4

FE 135D BRIT DOM 79H
AGA 79H BRIT DOM ET 70N
AGA 656U MISS STANDARD ET 17H

FE 8S BRITISHER DOMINO 135D
FE 412 DANDY 60Y
STANDRD LAD 656 4ET
AGA MISS 80S VOLTAGE ET 14X

AGA 22B BRIGADER 53L
AGA 53L MISS RED DOMINO 39P
AGA 335C MISS EXTRA 8G

CTY BRIGADER 22B
AGA 189C MISS DOMINO 4E
CTY EXTRA 335C
AGA 67Z MISS CENTENNIAL 81D

Exposed: June 11 - July 28 - CC 77J Jarrod 26T (Ref Sire H)
Due: late March

14

AGA 101J MISS STANDARD 14R

C02864046 ALNK 14R FEBRUARY 15 2005

BW:	87
205:	610
'11 EPD's	
CE:	-1.3
BW:	4.1
WW:	45.4
YW:	74.9
MCE:	1.6
Milk:	20.8

STANDRD LAD 656 4ET
AGA 656U STANDARD ET 101J
AGA MISS 80S VOLTAGE ET 14X

Pictured inside back cover
FE 34Z STANDARD 288D
AGA 288D MISS STANDARD 24H
AGA 22B MISS BRIGADER 511E

HI STANDARD LAD 20P
BELL L 60H DOMINO LASS 82K
LCI ET HIGH VOLTAGE 80S
MISS 51K BRITISHER AGA 61N

PDHR 3X HI STANDARD 34Z
FE 628U STANDARD LASS 70A
CTY BRIGADER 22B
AGA MISS 42X STANMORE 94Z

A.I.'ed: May 24 - AGA 114L General 105T
Exposed: June 11 - July 28 - CCC 77J Jarrod 26T (Ref Sire H)
Due: end of March

4

AGA 73R MISS STANDARD 4T

C02903287 ALNK 4T FEBRUARY 11 2007

BW:	69
205:	n/a
'11 EPD's	
CE:	0.9
BW:	3.0
WW:	27.2
YW:	46.1
MCE:	2.1
Milk:	9.4

BANNERLANE HI STANDARD 41F
AGA 41F HI STANDARD 73R
AGA 22B MISS BRIGADER ET 11L

MVF 656 65U STD DOMINO LAD 87D
BANNERLANE 56U DOM LASS 15Z
CTY BRIGADER 22B
AGA MISS 80S VOLTAGE ET 14X

AGA 22B BRIGADER 53L
AGA 53L MISS RED DOMINO 14N
AGA 67Z MISS CENTENNIAL ET 18D

CTY BRIGADER 22B
AGA 189C MISS DOMINO 4E
SNS CENTENNIAL ET 67Z
MISS 51K BRITISHER AGA 61N

A.I.'ed: June 5 - AGA 35J Silver Pride 207N
Exposed: June 21 - July 28 - LCI 68R Red Standard 109U
Due: mid April

50

AGA 47R MISS BRITISHER 50T

C02903300 ALNK 50T MARCH 04 2007

BW:	64
205:	557
'11 EPD's	
CE:	4.9
BW:	-0.2
WW:	24.8
YW:	51.9
MCE:	2.7
Milk:	9.2

DP BRITISHER AGA 46E
AGA 46E BRITISHER 47R
AGA 167L MISS SILVER 125N

AGA 85J STANDARD 118L
AGA 118L MISS STANDARD 27R
AGA 79H MISS BRIT DOM ET 118N

DOMINO STANDARD DP LAD 45
BRITISHER WETMORE LADY AGA 5A
AGA 44C SILVER 167L
AGA 47F MISS DOMINO 15K

AGA 191G STANDARD 85J
AGA 40Y MISS BRITISHER 168F
FE 135D BRIT DOM 79H
AGA 656U MISS STANDARD ET 17H

A.I.'ed: June 3 - AGA 77J Superman ET 715T
Exposed: June 21 - July 28 - CC 77J Jarrod 26T (Ref Sire H)
Due: mid April

A BIG THANK YOU TO OUR SPONSORS!!



Canada 

Peter Van Kasteren
Crop Production Advisor

420 - 43rd Ave. E, Box 667
Claresholm, AB
Canada T0L 0T0

Office: 403-625-3329
Fax: 403-625-4145
Cell: 403-682-9095
Email: peter.vankasteren@cpsagu.ca



Co-operative Limited

4424 - 2 Street E.
P.O. Box 8
Claresholm, Alberta T0L 0T0

www.ufa.net

Steve Marshall

Agent
Claresholm / Nanton Agency
Skyline Petroleum Ltd.

Claresholm: (403) 625-3593
Nanton: (403) 646-2424
Cell: (403) 625-0251
Fax: (403) 625-4791
Home: (403) 549-2382

Email: marsh@platinum.ca

Dr. Paul Christiansen, DVM
Market Support Specialist



Pfizer Animal Health

17300 Trans-Canada Highway
Kirkland, Quebec H9J 2M5
Voice Mail: 1-800-999-2857, Ext. 1016
Cell: 403-332-1556 Fax: 403-678-8770
Email: paul.christiansen@pfizer.com

Dave Thorlakson

Business Development Manager
Dairy/Beef



Landmark Feeds Inc.

Phone : (403) 329-3192
Cellular : (403) 308-3820
Fax : (403) 329-8046
Toll Free : (877) 750-2474

e-mail: dave.thorlakson@nutreco.ca



3102 - 12th Ave. N.
Lethbridge, AB
Canada T1H 5V1

Buyers Draw!

1.800.661.7939

www.westernshop.com

Our sincere thanks to Frontier for their generous participation in our sale! At the completion of the sale, a draw from the names of the buyers will see one lucky buyer go home with a \$100 gift certificate to the Frontier Western Shop!

- ✓ SADDLES
- ✓ TACK
- ✓ CLOTHING
- ✓ ACCESSORIES
- ✓ HOME DECOR
- ✓ BOOKS, DVDs, TOYS
- ✓ GIFTS
- ✓ MONDAY MADNESS
- ✓ CLEARANCE CORRAL

5111 1st Street West
Claresholm, Alberta

A sincere thank you to the bidders and buyers and all who participate in our sale in any way. Your loyalty is key to our success and if you have any questions, please do not hesitate to contact us or visit our website for updates and more information -

www.ulrichherefords.com

Peter Ulrich - 403-625-1036

Ulrich Bull & Female Sale

117

AGA 73R MISS STANDARD 117T

C02903326 ALNK 117T APRIL 05 2007

BW:	93
205:	655
'11 EPD's	
CE:	-3.2
BW:	6.8
WW:	47.5
YW:	67.7
MCE:	0.4
Milk:	11.7

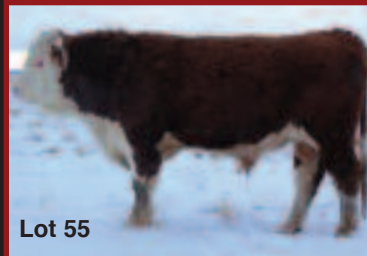
BANNERLANE HI STANDARD 41F
AGA 41F HI STANDARD 73R
 AGA 22B MISS BRIGADER ET 11L

MVF 656 65U STD DOMINO LAD 87D
 BANNERLANE 56U DOM LASS 15Z
 CTY BRIGADER 22B
 AGA MISS 80S VOLTAGE ET 14X

SNS 75K SKY PRINCE 17M
AGA 17M MISS SKY LAD 169P
 AGA 101J MISS STANDARD 240L

SNS 67F SKY LAD 75K
 SNS 44C PRINCESS 3H
 AGA 656U STANDARD ET 101J
 AGA 852 MISS STANMORE 22C

Exposed: June 10 - July 28 - AGA 114L General Wiley 24W
Due: mid April



Lot 55



Lot 75

702

AGA 70N MISS BRIT DOM 702T

C02910200 ALNK 702T AUGUST 22 2007

BW:	89
205:	584
'11 EPD's	
CE:	-2.5
BW:	6.3
WW:	49.2
YW:	85.1
MCE:	1.6
Milk:	10.8

FE 135D BRIT DOM 79H
AGA 79H BRIT DOM ET 70N
 AGA 656U MISS STANDARD ET 17H

FE 8S BRITISHER DOMINO 135D
 FE 412 DANDY 60Y
 STANDRD LAD 656 4ET
 AGA MISS 80S VOLTAGE ET 14X

AGA 22B BRIGADER 53L
AGA 53L MISS RED DOMINO 93P
 AGA 64K MISS DOUBLE MO LE 75M

CTY BRIGADER 22B
 AGA 189C MISS DOMINO 4E
 AGA 12B DOUBLE MO LE 64K
 AGA 69G MISS EXTRA 127K

A.I.'ed: June 3 - AGA 53A Standard ET 4R
Exposed: June 21 - July 28 - AGA 26R Stanmore 5T (Ref Sire G)
Due: mid April



Lot 80



Lot 86

128

AGA 21M MISS STANMORE 128T

C02903333 ALNK 128T APRIL 20 2007

BW:	81
205:	542
'11 EPD's	
CE:	1.5
BW:	3.1
WW:	46.6
YW:	87.4
MCE:	2.7
Milk:	31.3

AGA 121G STANMORE 20J
AGA 20J STANMORE 21M
 AGA 5C MISS ENERLAD 68K

AGA 4016D STANMORE 121G
 AGA 40E MISS STANMORE 80G
 XTC 15Z ENERLAD STAN 5C
 AGA 154F MISS BRITISHER 159H

Pictured at right
 AGA 22B BRIGADER 97J
AGA 97J MISS RED EXTRA 35R
 AGA 114L MISS GENERAL 103N

CTY BRIGADER 22B
 AGA 335C MISS EXTRA 8G
 AGA 13G GENERAL 114L
 AGA 96H MISS STANDARD 182K

Exposed: May 28 - July 28 - AGA 13G General 114L (Ref Sire A)
Due: mid March



Lot 103



Lot 105



Lot 111



Lot 119

98

AGA 73R MISS STANDARD 98T

C02903318 ALNK 98T MARCH 25 2007

BW:	78
205:	545
'11 EPD's	
CE:	-1.4
BW:	3.1
WW:	32.7
YW:	53.3
MCE:	1.2
Milk:	15.8

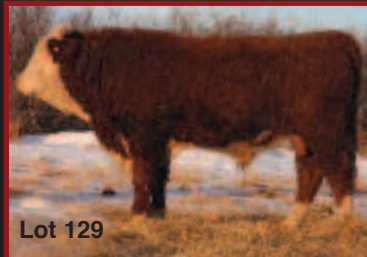
BANNERLANE HI STANDARD 41F
AGA 41F HI STANDARD 73R
 AGA 22B MISS BRIGADER ET 11L

MVF 656 65U STD DOMINO LAD 87D
 BANNERLANE 56U DOM LASS 15Z
 CTY BRIGADER 22B
 AGA MISS 80S VOLTAGE ET 14X

AGA 13G GENERAL 114L
AGA 114L MISS GENERAL 103N
 AGA 96H MISS STANDARD 182K

GEM GENERAL 13G
 AGA 656U MISS STANDARD ET 17H
 AGA 288D STANDARD 96H
 AGA 22B MISS BRIGADER 511E

Exposed: June 11 - July 28 - CC 77J Jarrod 26T (Ref. Sire H)
Due: early April



Lot 129



Lot 908



Lot 16W



Lot 14R

35

AGA 97J MISS RED EXTRA 35R

C02864056 ALNK 35R FEBRUARY 19 2005

BW:	82
205:	560
'11 EPD's	
CE:	-0.8
BW:	5.6
WW:	38.7
YW:	76.6
MCE:	-0.5
Milk:	23.6

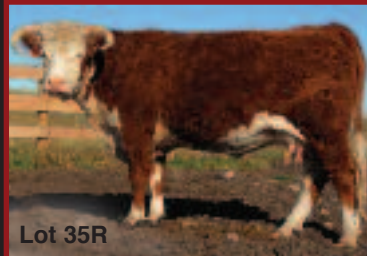
CTY BRIGADER 22B
AGA 22B BRIGADER 97J
 AGA 335C MISS EXTRA 8G

BAR PIPE BRIGADIER 19Y
 LADY 66J B DOM 509
 CTY EXTRA 335C
 AGA 67Z MISS CENTENNIAL 81D

Pictured at right
 AGA 13G GENERAL 114L
AGA 114L MISS GENERAL 103N
 AGA 96H MISS STANDARD 182K

GEM GENERAL 13G
 AGA 656U MISS STANDARD ET 17H
 AGA 288D STANDARD 96H
 AGA 22B MISS BRIGADER 511E

A.I.'ed: June 10 - AGA 35J Silver Pride 207N
Exposed: June 29 - July 28 - AGA 13G General 114L (Ref Sire A)
Due: late March



Lot 35R



Lot 128T

ULRICH HEREFORDS

Peter Ulrich
Box 843, Claresholm, AB
T0L 0T0



ULRICH HEREFORDS

Bull & Female Sale

• FEBRUARY 21, 2011 •

Monday • 1:00 pm
@ Balog Auction, Lethbridge, AB

On Offer -
42 Two Year Old &
Long Yearling Bulls
Special Feature!

- 14 Registered Bred Heifers
- 9 Registered Young Bred Cows

